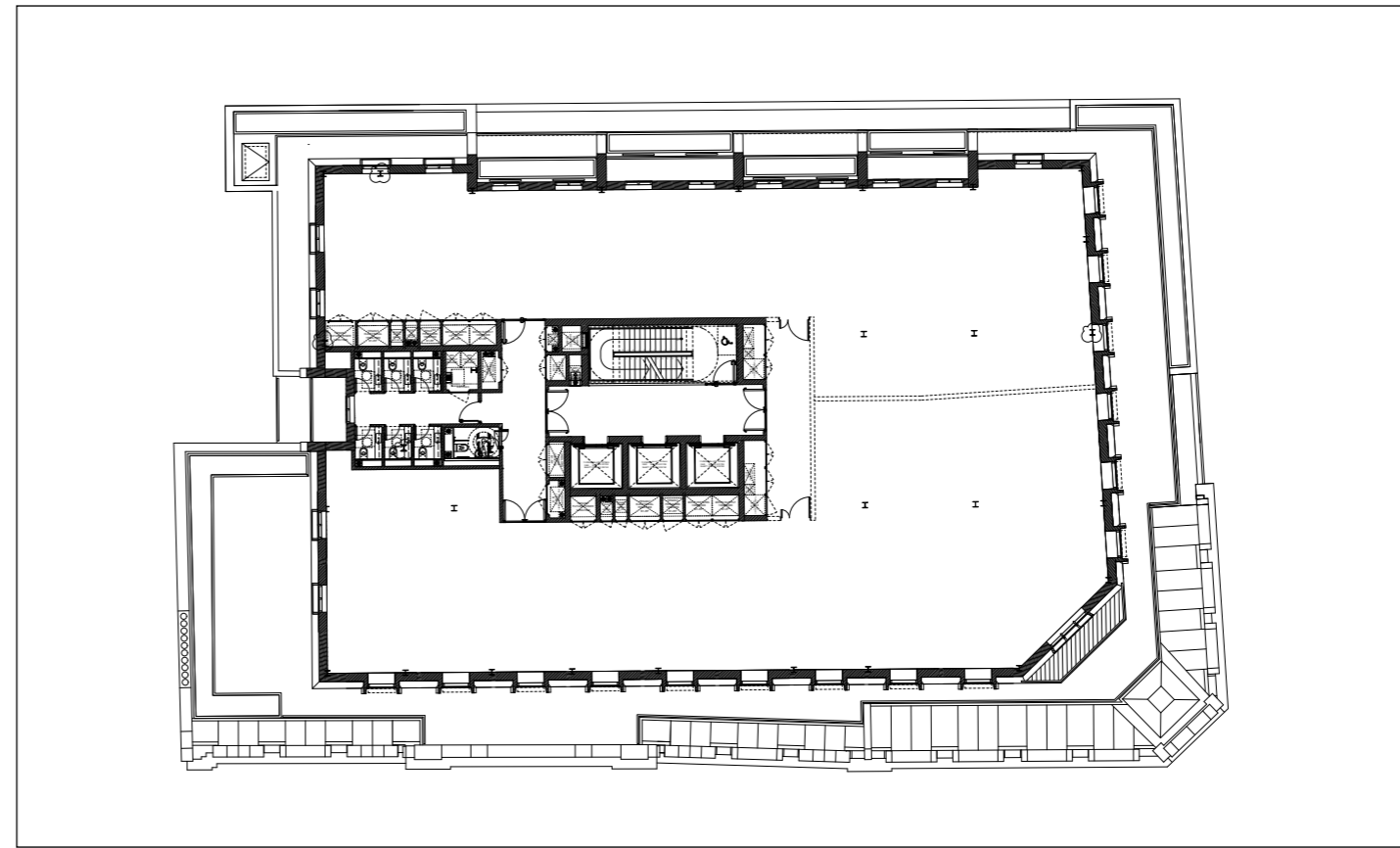


11.4 PROPOSED GENERAL ARRANGEMENT PLANS

PROPOSED FIFTH FLOOR PLAN

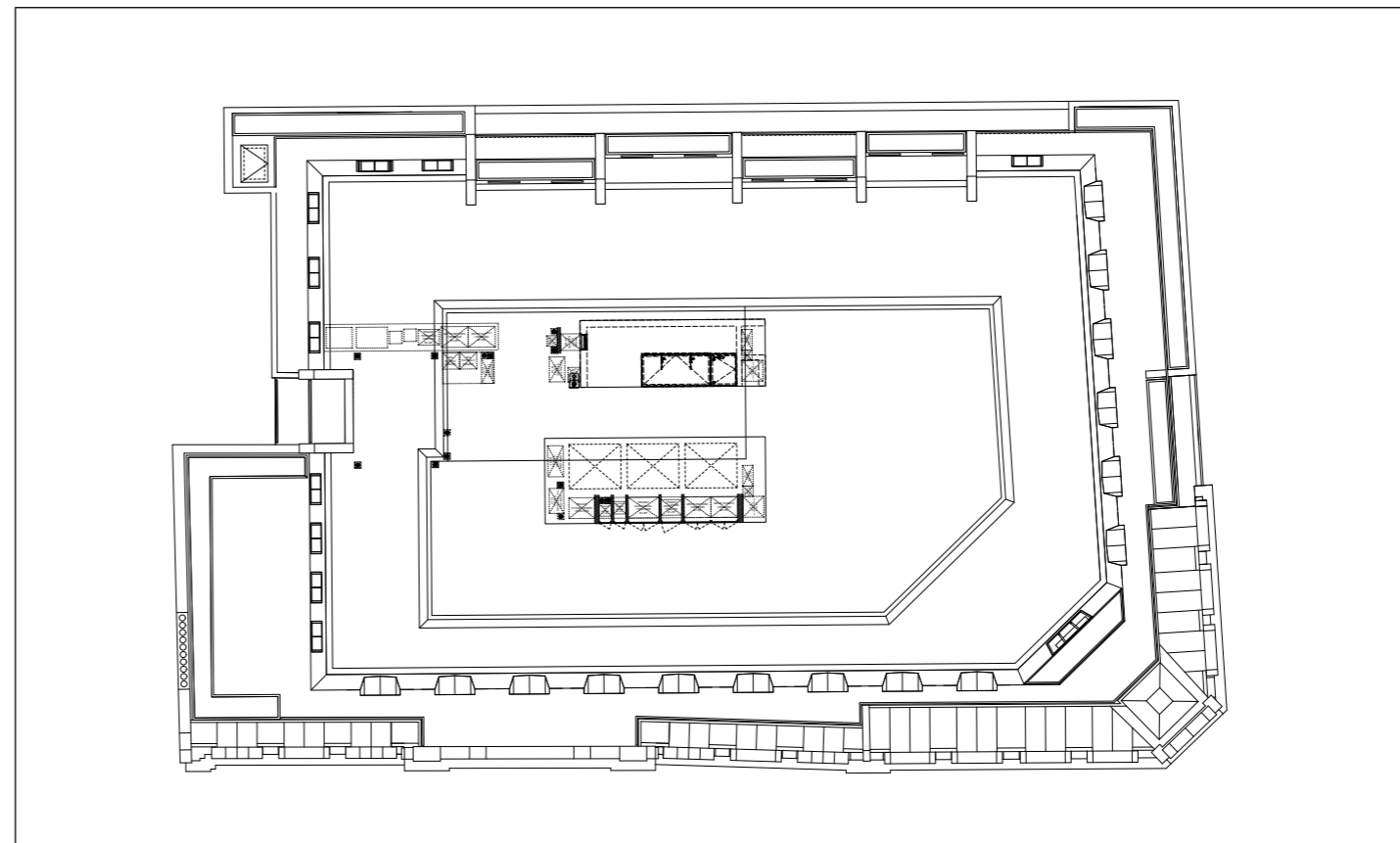
- + Fifth floor massing raking back from fourth floor below as mansard style detail
- + Notch in south elevation to break up massing
- + Centralised core to reconfigure floorplates as open plan
- + Upgraded core facilities - lifts, WC's, stairs & risers
- + Replacement & upgrading of sustainable M&E services & plant
- + CAT A refurbishment of office areas
- + Indicative tenancy split
- + The extension massing strategy addresses Daylight Sunlight considerations



Fifth Floor

PROPOSED ROOF PLAN

- + Plant enclosure stepped away from extension facade and arranged to the north east to minimise visual impact to south and west
- + Replacement & upgrading of sustainable M&E services & plant
- + The extension massing strategy addresses Daylight Sunlight considerations



Roof

STIFF + TREVILLION
ARCHITECTS
16 WOODFIELD ROAD
LONDON W9 2BE

T: +44 (0)20 8960 5550

E: mail@stiffandtrevillion.com