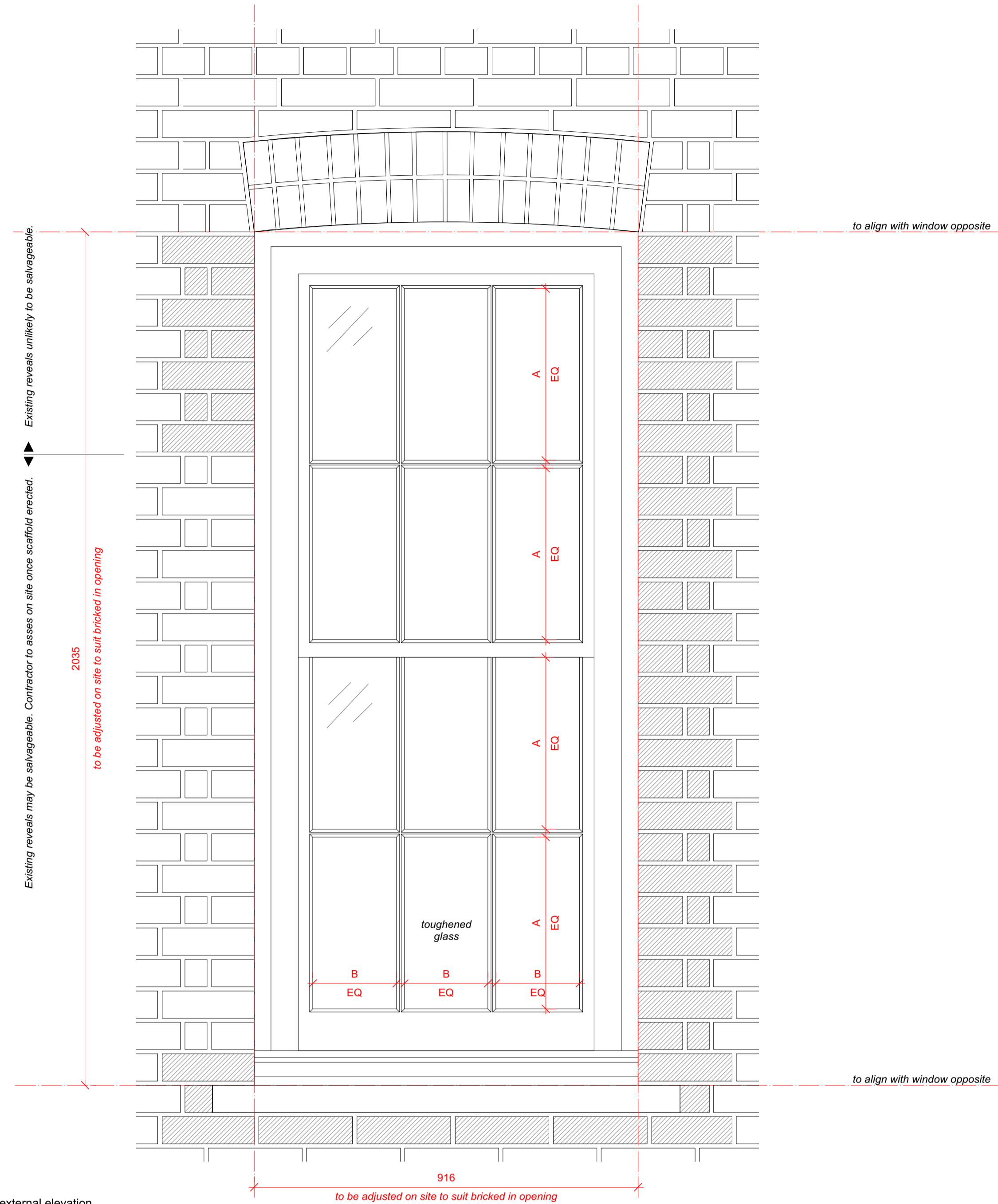
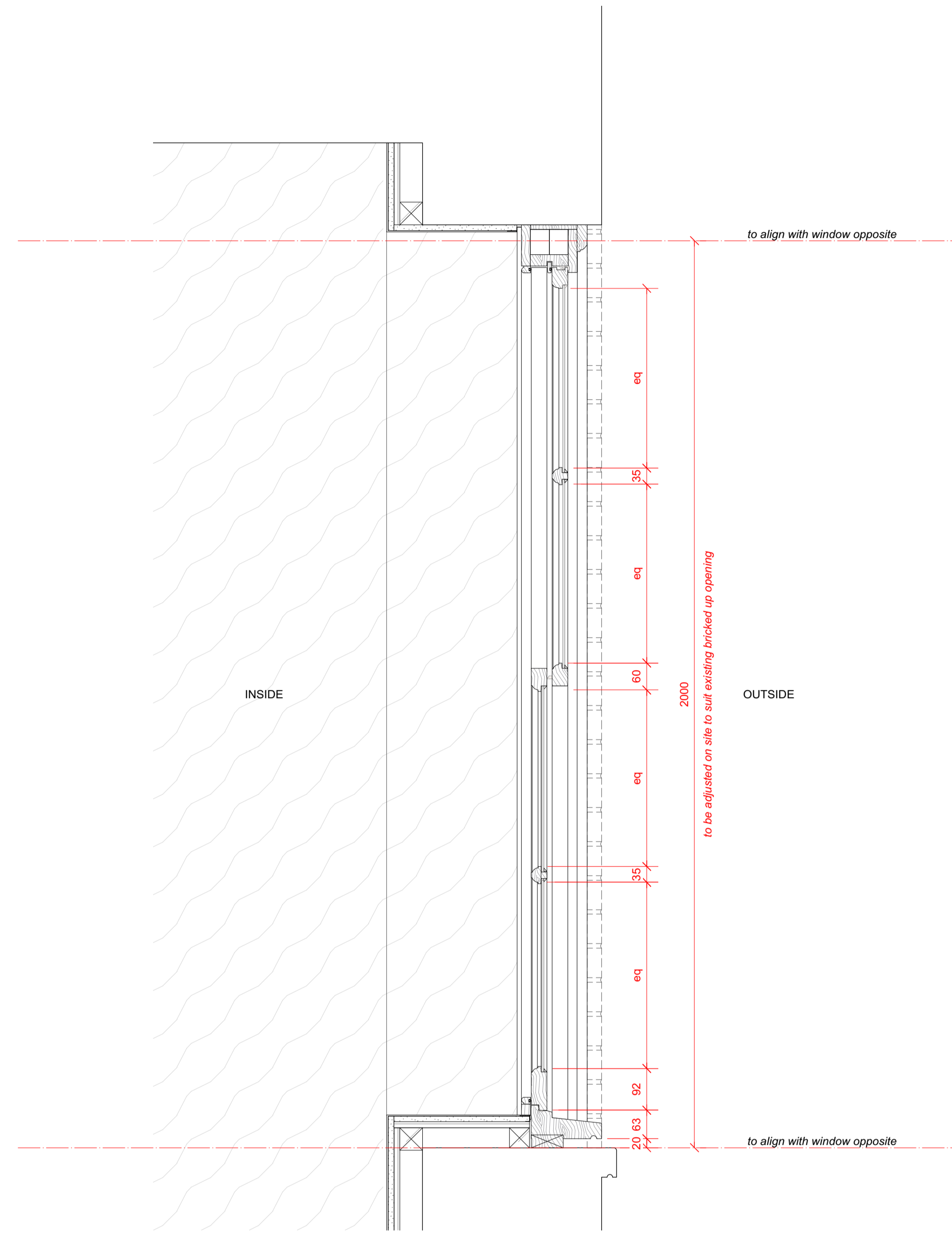


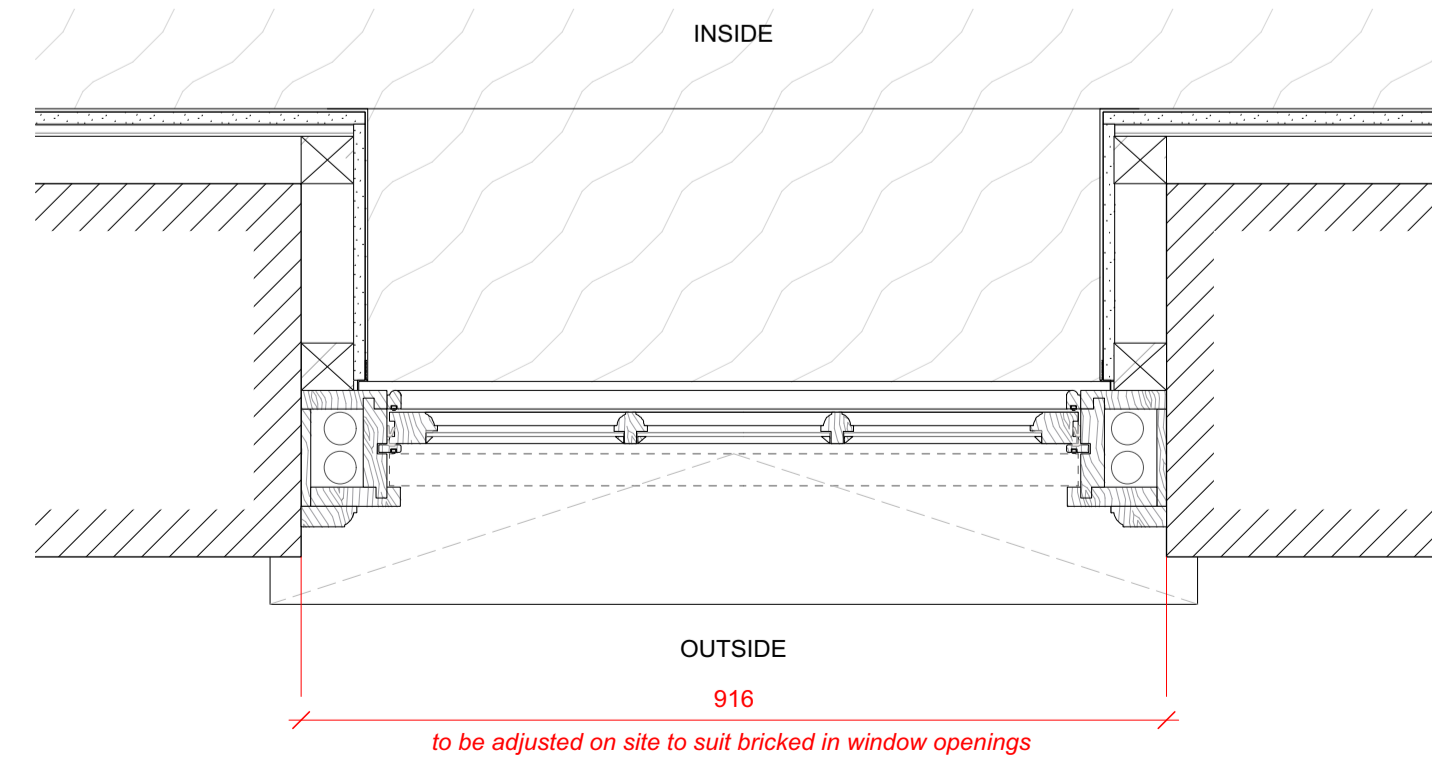
Size of window to be established on site to suit brick dimensions and existing bricked in opening. Top and base of window and glazing bars to align with adjacent window.



4 Window external elevation
Scale: 1:8



2 Window section
Scale: 1:8



3 Window plan
Scale: 1:8



Existing rowlock arch in wall reinstated as head of new sash window.
Original brick opening reinstated. New window to fit dimensions.

1 Photo
Scale: Actual Size

Refer to detail 5 on drawing P540

5 Glazing bead detail
Scale: Actual Size

37 Great James Street

REV	DATE (dd.mm.yy)	DESCRIPTION
A	22.10.21	LBC Condition Discharge

DO NOT SCALE FROM THIS DRAWING. ALL DIMENSIONS ARE TO BE CHECKED ON SITE. ALL OMISSIONS AND DISCREPANCIES TO BE REPORTED TO THE ARCHITECT IMMEDIATELY. THIS DRAWING IS TO BE READ IN CONJUNCTION WITH ALL CONSULTANTS INFORMATION. QUINN ARCHITECTS LTD RETAIN COPYRIGHT OF ALL INFORMATION IN THIS DRAWING

- New sash window notes:**
- Frames
Solid timber, primed and painted white
 - Glazing
4mm thick clear float glass. Toughened within 800m of floor levels.
 - Glazing Bars
35mm wide ovolo profile, painted white
 - External Architrave
Solid timber with ovolo moulding to edge, to match those existing on rear facade
 - Seals
White brush weatherstrips rebated into all parting and staff beads, and lower sash top rail
 - Fixings
All fixings to be pelleted / nailed, filled and painted or otherwise concealed. No visible screwheads / nail heads.
 - External Sill
Cast concrete painted white, size to match those existing on rear facade
 - Internal Sill
Microcement finish
 - Brick Reveals
Salvaged brick used to form new reveals. Toothing in to existing with queen closer detail to form new opening.
 - Brick Arch
Existing arch, subject to inspection by structural engineer

Quinn Architects

Rochelle School Arnold Circus London E2 7ES
+44 (0)20 7613 3843 www.quinnuk.com

DRAWING TITLE

External Doors & Windows New sash window W2.06

SCALE: 1:8 @ A1
DRAWN BY: CE

CHECKED BY: LQ

DRAWING STATUS: PLANNING

PROJECT NO: QA203
DRAWING NO: P541
REV: A