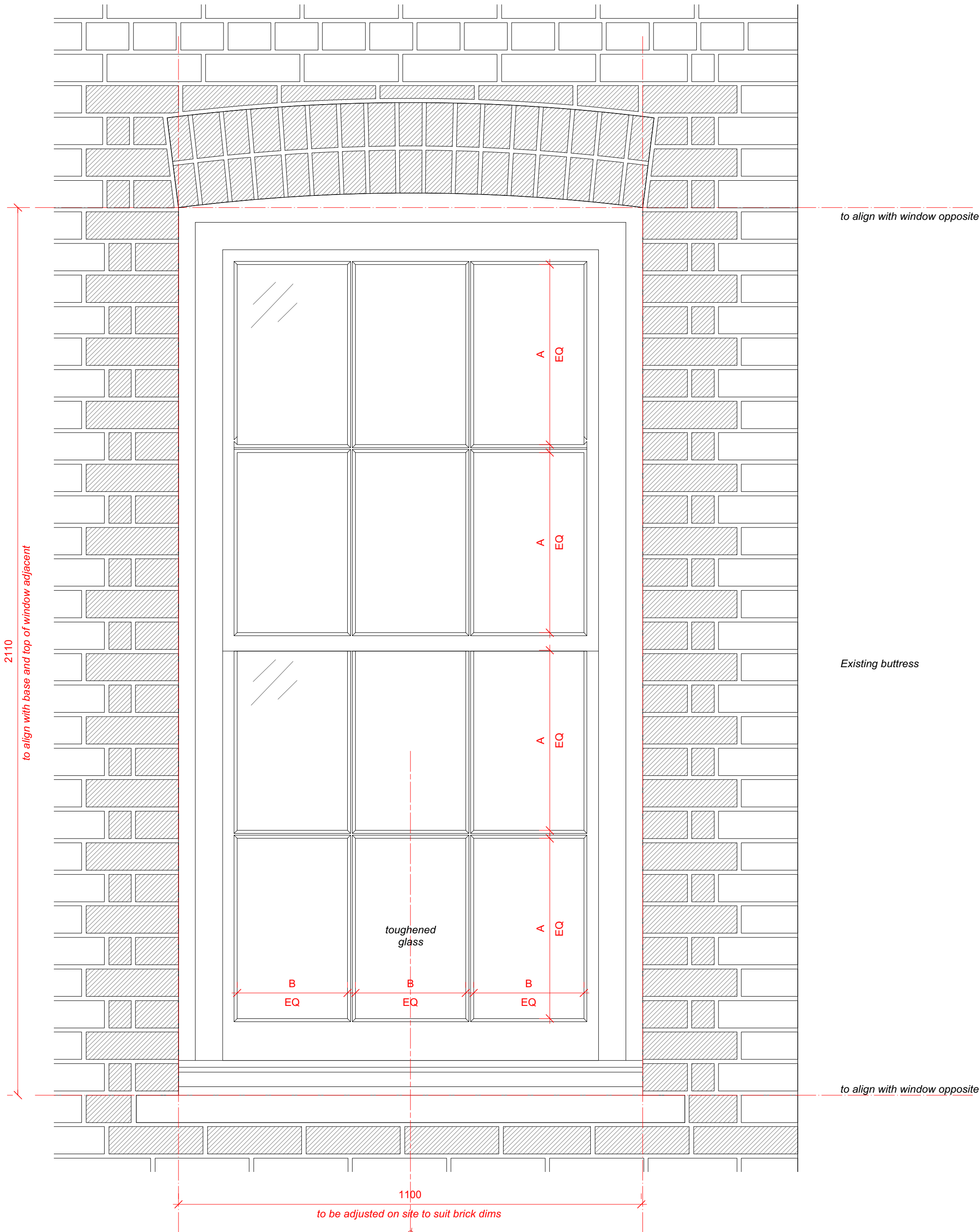


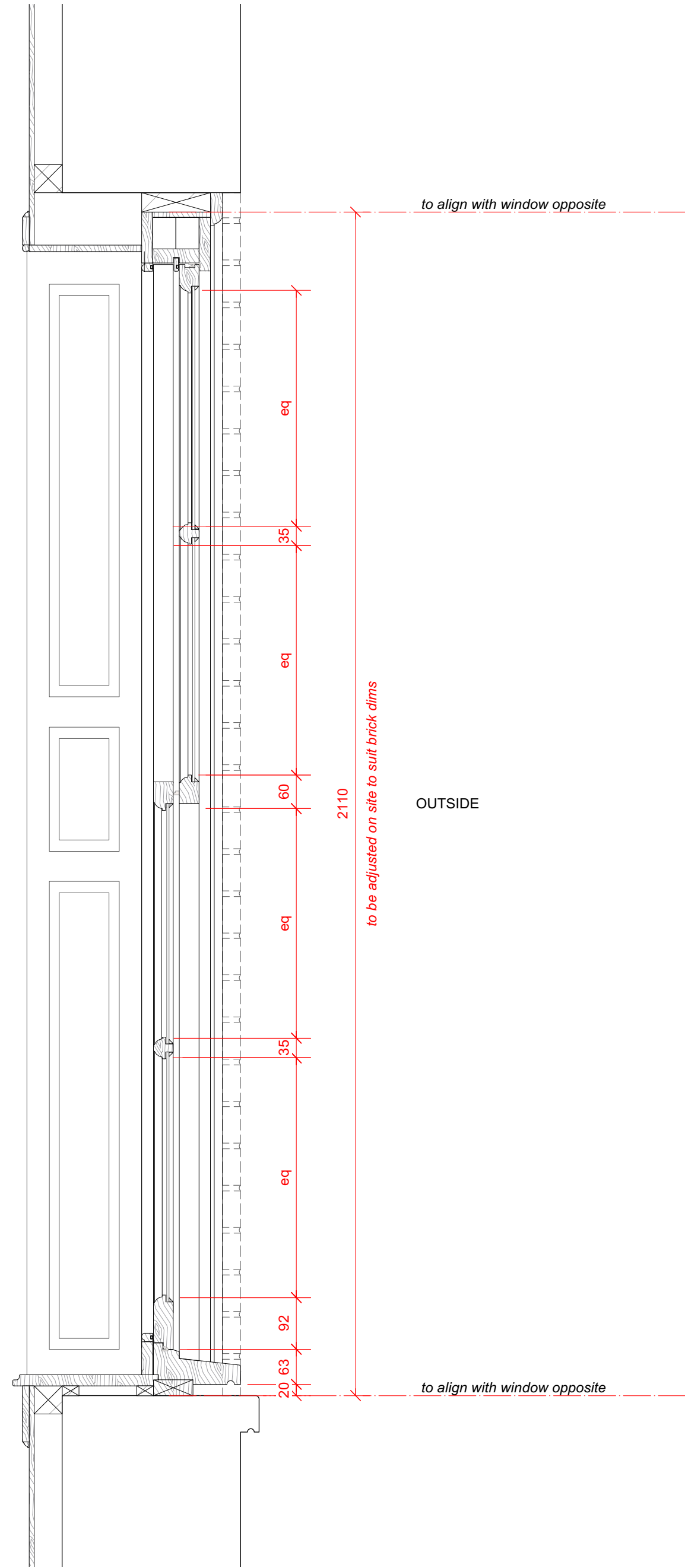
Size of window to be established on site to suit brick dimensions. Top and base of window and glazing bars to align with adjacent existing window.



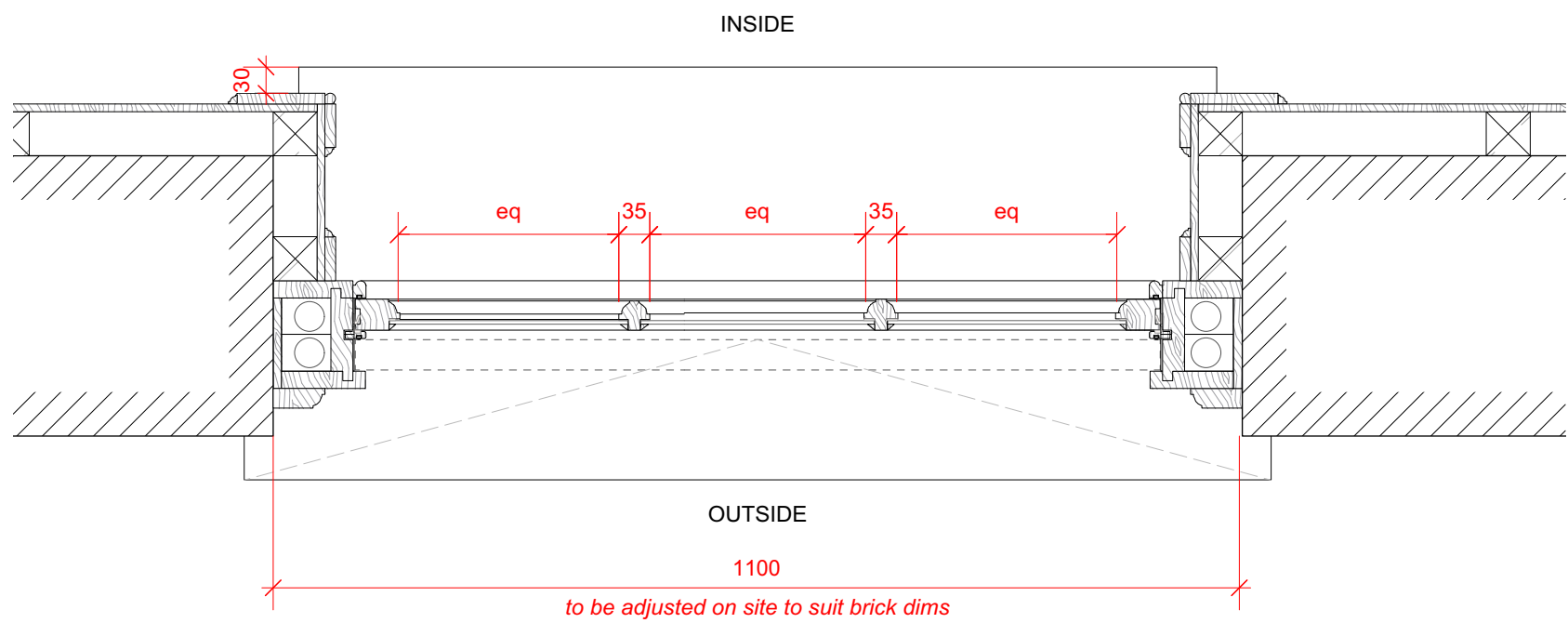
1 Window external elevation
Scale: 1:8

INSIDE

OUTSIDE



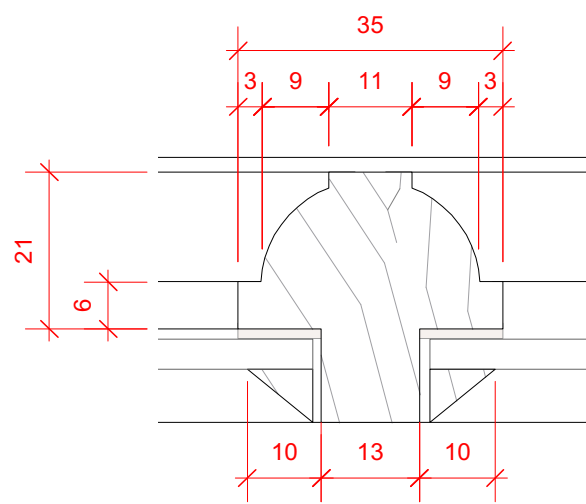
2 Window section
Scale: 1:8



3 Window plan
Scale: 1:8



4 Photo
Scale: Actual Size



5 Glazing bead detail
Scale: Actual Size

37 Great James Street

REV	DATE (dd.mm.yy)	DESCRIPTION
A	22.10.21	LBC Condition Discharge

DO NOT SCALE FROM THIS DRAWING. ALL DIMENSIONS ARE TO BE CHECKED ON SITE. ALL OMISSIONS AND DISCREPANCIES TO BE REPORTED TO THE ARCHITECT IMMEDIATELY. THIS DRAWING IS TO BE READ IN CONJUNCTION WITH ALL CONSULTANTS INFORMATION. QUINN ARCHITECTS LTD RETAIN COPYRIGHT OF ALL INFORMATION IN THIS DRAWING.

New sash window notes:

Frames
Solid timber, primed and painted white

Glazing
4mm thick clear float glass. Toughened within 800m of floor levels.

Glazing Bars
35mm wide ovolo profile, painted white

External Architrave
Solid timber with ovolo moulding to edge, to match those existing on rear facade

Seals
White brush weatherstrips rebated into all parting and staff beads, and lower sash top rail

Fixings
All fixings to be pelleted / nailed, filled and painted or otherwise concealed. No visible screwheads / nail heads.

External Sill
Cast concrete painted white, size to match those existing on rear facade

Internal Sill
Solid timber, moulded profile.

Brick Reveals
Salvaged brick used to form new reveals. Toothing in to existing with queen closer detail to form new opening.

Brick Arch
New london stock brickwork rowlock arch to match existing.

Quinn Architects

Rochelle School Arnold Circus London E2 7ES
+44 (0)20 7613 3843 www.quinnuk.com

DRAWING TITLE

External Doors & Windows New sash window W1.07

SCALE
1:8 @ A1

DRAWN BY
CE

CHECKED BY
LQ

DRAWING STATUS
PLANNING

PROJECT NO.
QA203

DRAWING NO.
P540

REV.
A