

37 Great James Street

REV	DATE (dd.mm.yy)	DESCRIPTION
A	22.10.21	LBC Condition Discharge

DO NOT SCALE FROM THIS DRAWING. ALL DIMENSIONS ARE TO BE CHECKED ON SITE. ALL OMISSIONS AND DISCREPANCIES TO BE REPORTED TO THE ARCHITECT IMMEDIATELY. THIS DRAWING IS TO BE READ IN CONJUNCTION WITH ALL CONSULTANTS INFORMATION. QUINN ARCHITECTS LTD RETAIN COPYRIGHT OF ALL INFORMATION IN THIS DRAWING

Door and window drawing key:

W3.03 Existing door or window code (grey)

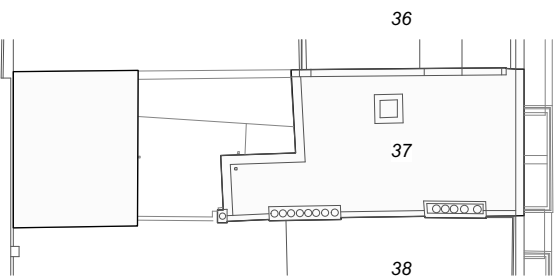
D3.04 New door or window code.

P520 Drawing reference for door or window

General Notes:

- 1 For door and window codes on plans see drawings P110-P112
- 2 For new internal doors see P520-P526.
- 3 For new external doors and windows around courtyard see P535-P539.
- 4 For new sash windows in closet wing see P540-P541

Key Plan:



Quinn Architects

Rochelle School Arnold Circus London E2 7ES
+44 (0)20 7613 3843 www.quinnuk.com

DRAWING TITLE

First and Second Floors
Proposed Doors and Windows

SCALE
1:50 @ A1 / 1:100 @ A3

DRAWN BY
CE

CHECKED BY
LQ

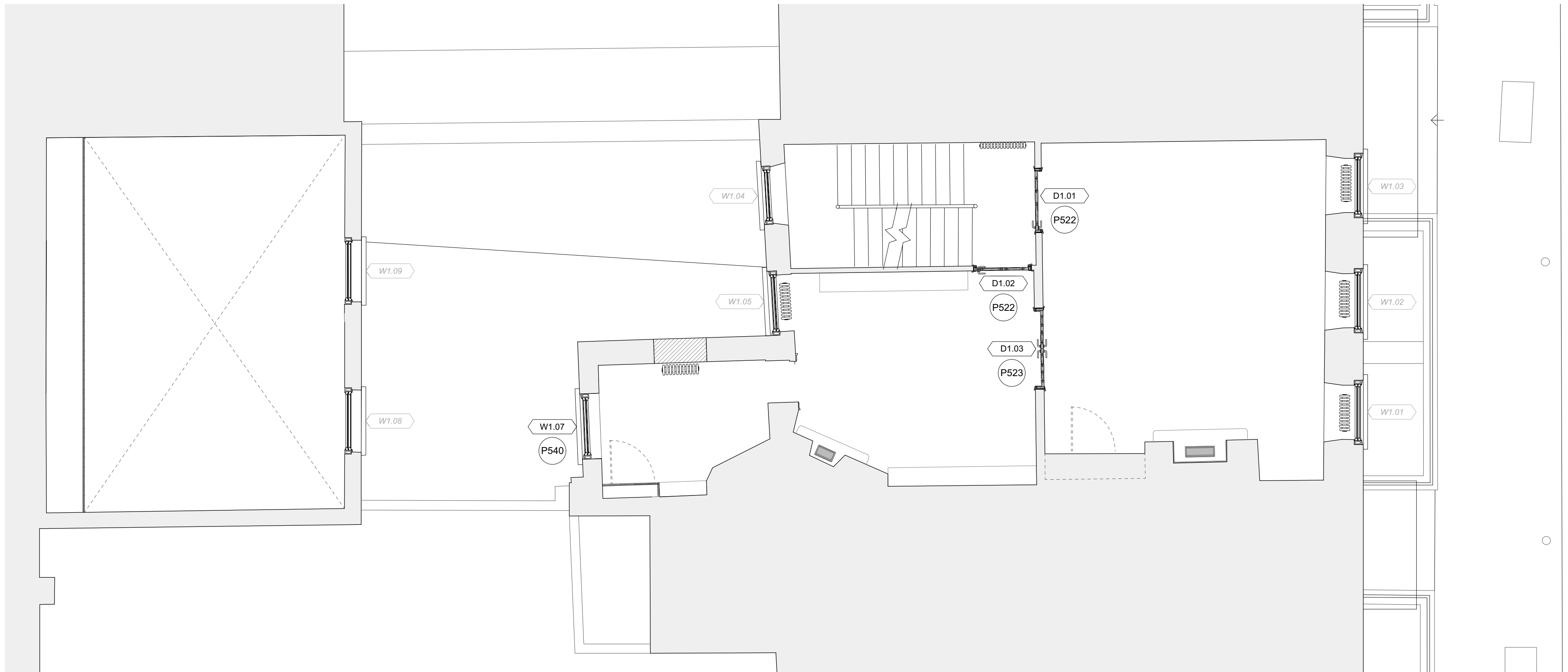
DRAWING STATUS
PLANNING

PROJECT NO.
QA203

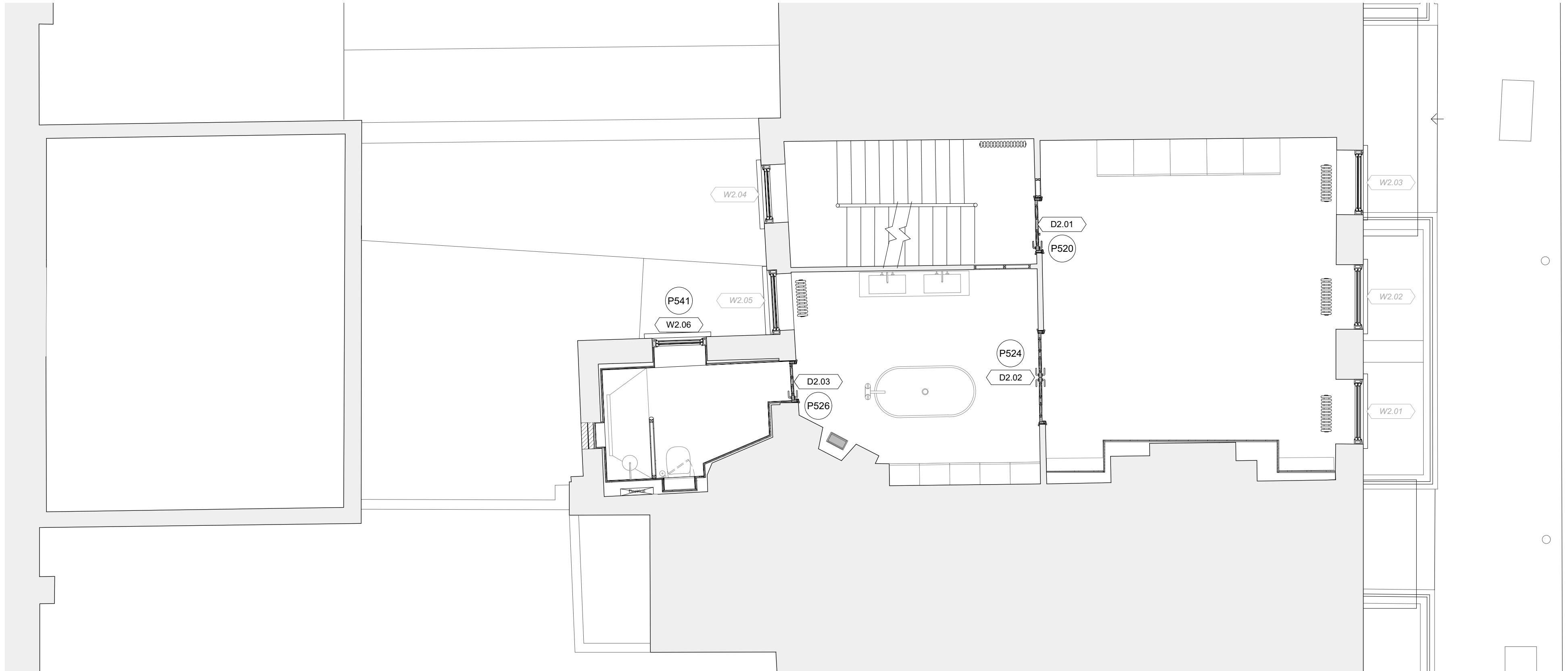
DRAWING NO.
P111

REV.
A

1 First Floor Plan
Scale: 1:50
P111



2 Second Floor Plan
Scale: 1:50
P111



0 1 2 3 4 5 M