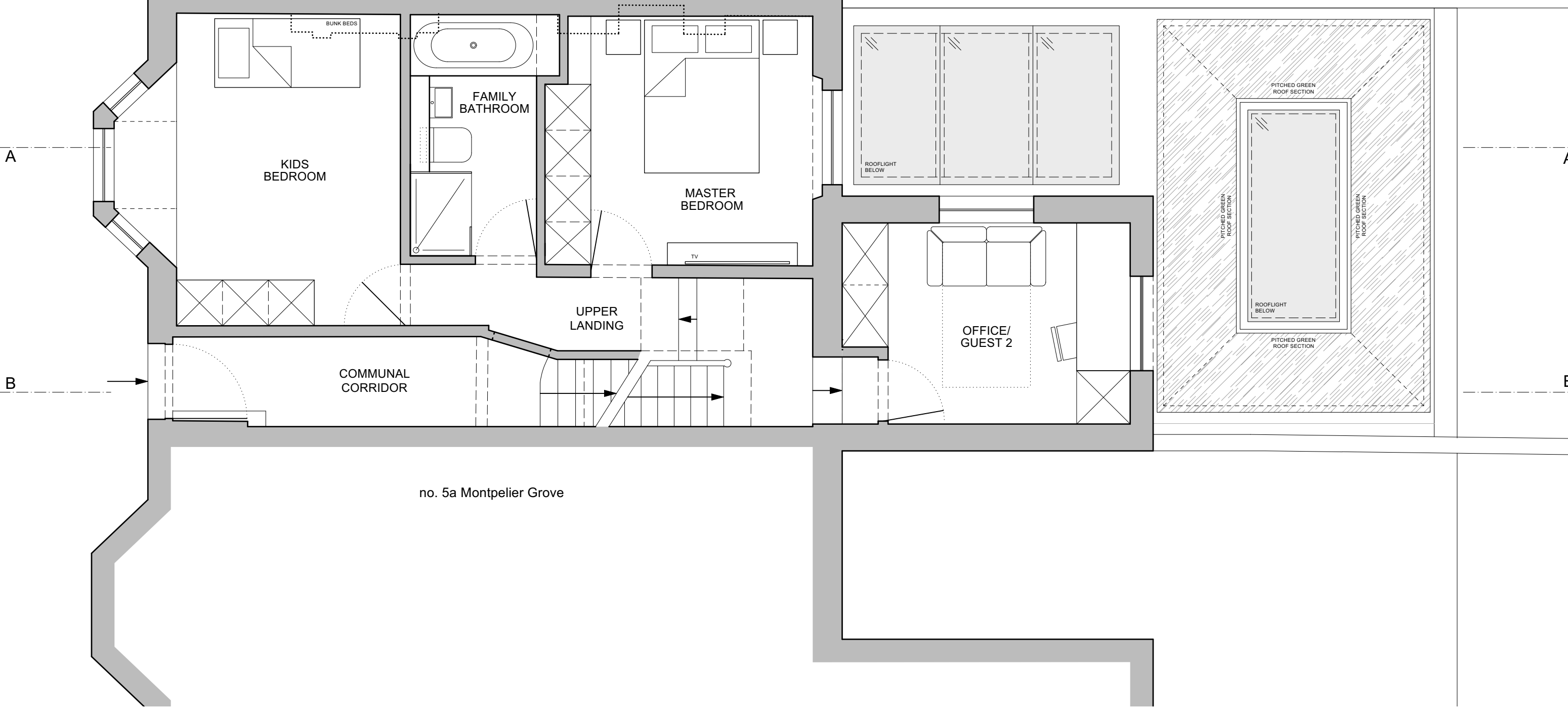


Indicative Rear Building Line

no. 3 Montpelier Grove



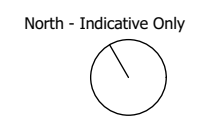
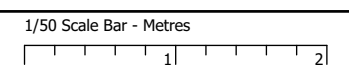
A

A

B

B

- Notes
- All contents copyright.
  - Do not scale.
  - Based on survey by others.
  - Contractor to verify all dimensions on site.
  - Read in conjunction with all relevant Architect's, Consultant's & Supplier's information.
  - Report any discrepancies to the Architect.



Revisions

A - 04/04/22 - Revised Rear Building Line
---

Project	<b>Extensions &amp; Alterations at 4 Montpelier Grove, London NW5 2XD</b>		
Drawing	<b>Upper Ground Floor As Proposed</b>		
Number	<b>2102_A002_A</b>	Status	<b>Information</b>
Scale	<b>1/50 @ A3</b>	Drawn	<b>WCF</b>
Date	<b>24/08/21</b>	Checked	<b>NJK</b>

Neil Kahawatte Architects

Unit 310  
4 Fortess Road  
London  
NW5 2ES

020 3239 0748  
mail@neilkahawatte.com  
Company Number: 8530938