



10 ROOF  
FFL +55.380 m

09 NINTH  
FFL +51.680 m

08 EIGHTH  
FFL +48.060 m

07 SEVENTH  
FFL +44.760 m

06 SIXTH  
FFL +41.460 m

05 FIFTH  
FFL +38.160 m

04 FOURTH  
FFL +34.860 m

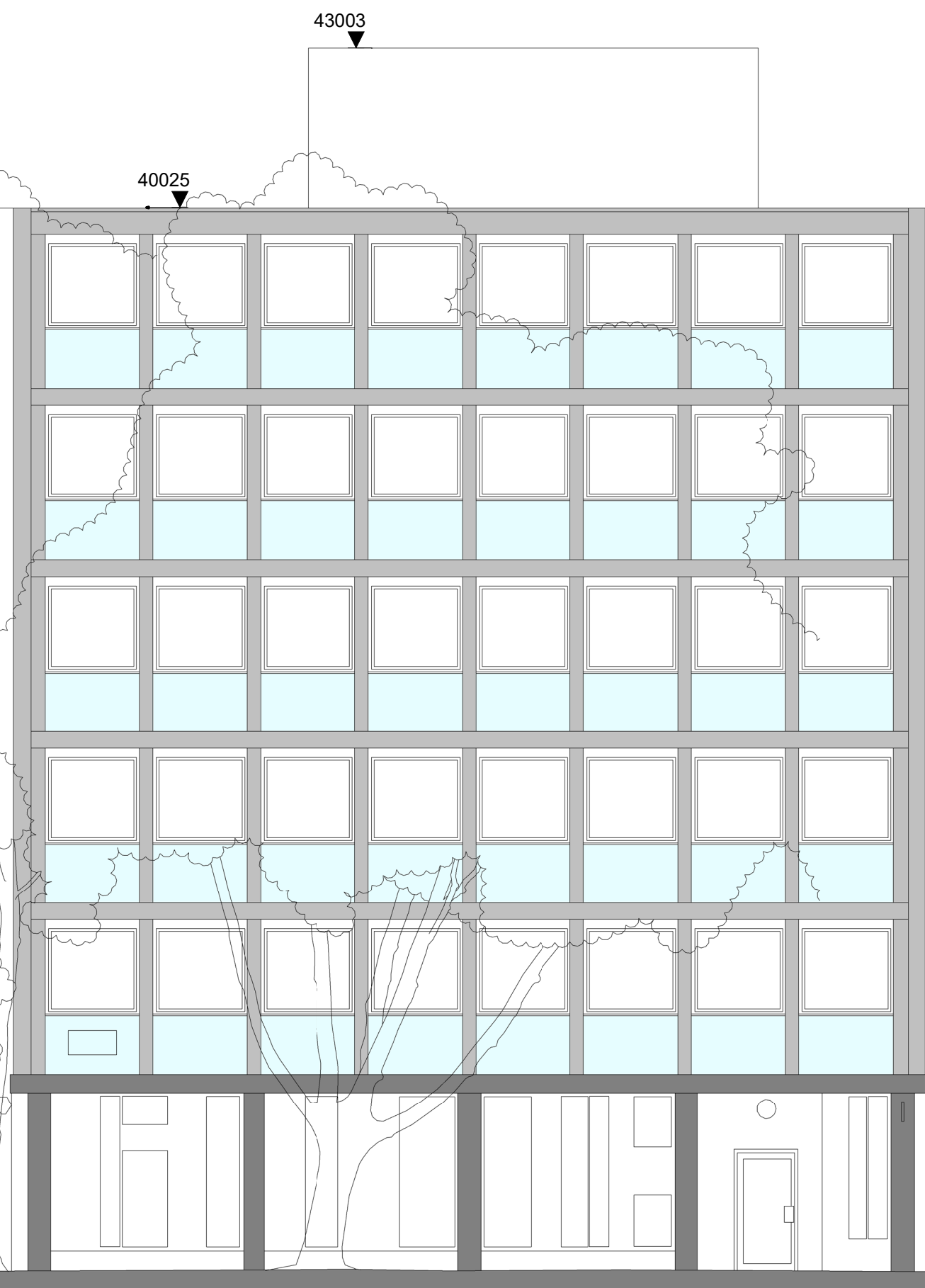
03 THIRD  
FFL +31.560 m

02 SECOND  
FFL +28.135 m

01 FIRST  
FFL +24.710 m

00 GROUND  
FFL +20.160 m

B1 LOWER GROUND  
FFL +16.170 m



notes

The recipient should report all drawing errors, omissions and discrepancies to the architect. All dimensions should be checked on site by the contractor and such dimensions shall be the contractor's responsibility. Allford Hall Monaghan Morris Limited (AHMM) accepts no responsibility or liability for:

- any use of this drawing by parties other than the party for whom it was prepared or for purposes other than those for which it was prepared
- any alterations or additions to or discrepancies arising out of changes to the background information on which the drawings are based that was current at the time of issue, and which occur to that information after it has been issued by AHMM
- any loss or degradation of the information held in this drawing resulting from the translation from the original file format to any other file format or from the recipient's reading of it in any other programme or any version of the programme other than that which was used to prepare it
- the accuracy of survey information provided by others or for any costs, claims, proceedings and expenses arising out of reliance on such information
- any scaling from this drawing other than by the local planning authority solely for the purposes of the planning application to which it relates
- any modifications or changes made to it without prior written consent of AHMM

When this drawing is issued in uncontrolled CAD format it will be accompanied by a PDF version and is issued to enable the recipient to prepare their own documents / models / drawings for which they are solely responsible.

P3	08/04/22	Non-material Amendment
P2	05/11/20	Post Submission Changes
P1	19/08/20	Planning Submission

REV	DATE
location plan	

ALLFORD HALL MONAGHAN MORRIS

ARCHITECTS Ltd  
MORELANDS, 5-23 OLD STREET LONDON EC1V 9HL  
TEL 020 7251 5261 FAX 020 7251 5123 WEB WWW.AHMM.CO.UK

client  
PRECIS

project name  
Acorn House

drawing title  
Elevation 01 - Grays Inn Road (South West Facing)

drawn	checked	scale	status		revision	
MF	AW	1 : 100@A1	PLANNING		P3	
project	originator	volume	level	type	role	drawing no.
18102	AHMM	XX	ZZ	DR	A	PL201

© Allford Hall Monaghan Morris Limited