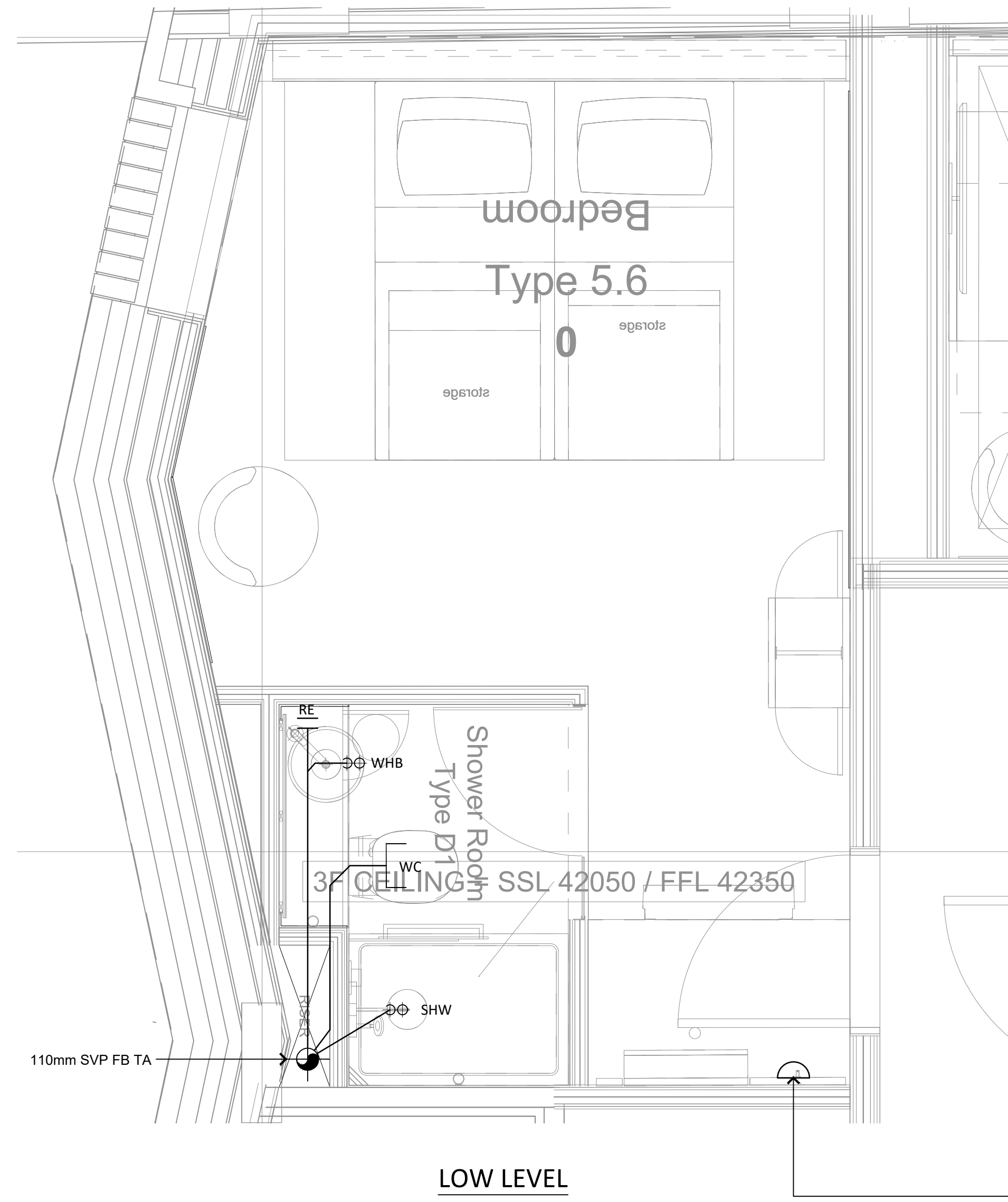


NOTES:

1. THIS DRAWING MUST NOT BE USED FOR CONSTRUCTION OR INSTALLATION PURPOSES UNLESS EXPRESSLY STATED.
2. ALL INFORMATION AND LAYOUT ON THIS DRAWING IS SUBJECT TO SITE DIMENSION CHECKS. DO NOT SCALE FROM THIS DRAWING ALWAYS WORK TO NOTED DIMENSIONS.
3. ALL DIMENSIONS ARE IN MILLIMETERS UNLESS NOTED OTHERWISE.
4. ALL DIMENSIONS MUST BE VERIFIED ON SITE BEFORE COMPLETING SHOP DRAWINGS OR SETTING OUT THE WORKS.
5. THIS DRAWING IS TO BE READ IN CONJUNCTION WITH ALL RELEVANT ARCHITECTS, STRUCTURAL ENGINEERS, MEP CONSULTANT DRAWINGS AND SPECIFICATIONS.
6. ANY DISCREPANCIES BETWEEN DRAWINGS AND SPECIFICATION OR RELATED DOCUMENT, THE ENGINEER SHALL BE NOTIFIED IN WRITING FOR VERIFICATION OF DISCREPANCY.
7. SERVICE PENETRATIONS WITHIN FIRE RATED PARTITIONS SHALL BE FIRE STOPPED IN ACCORDANCE WITH THE SPECIFICATION.



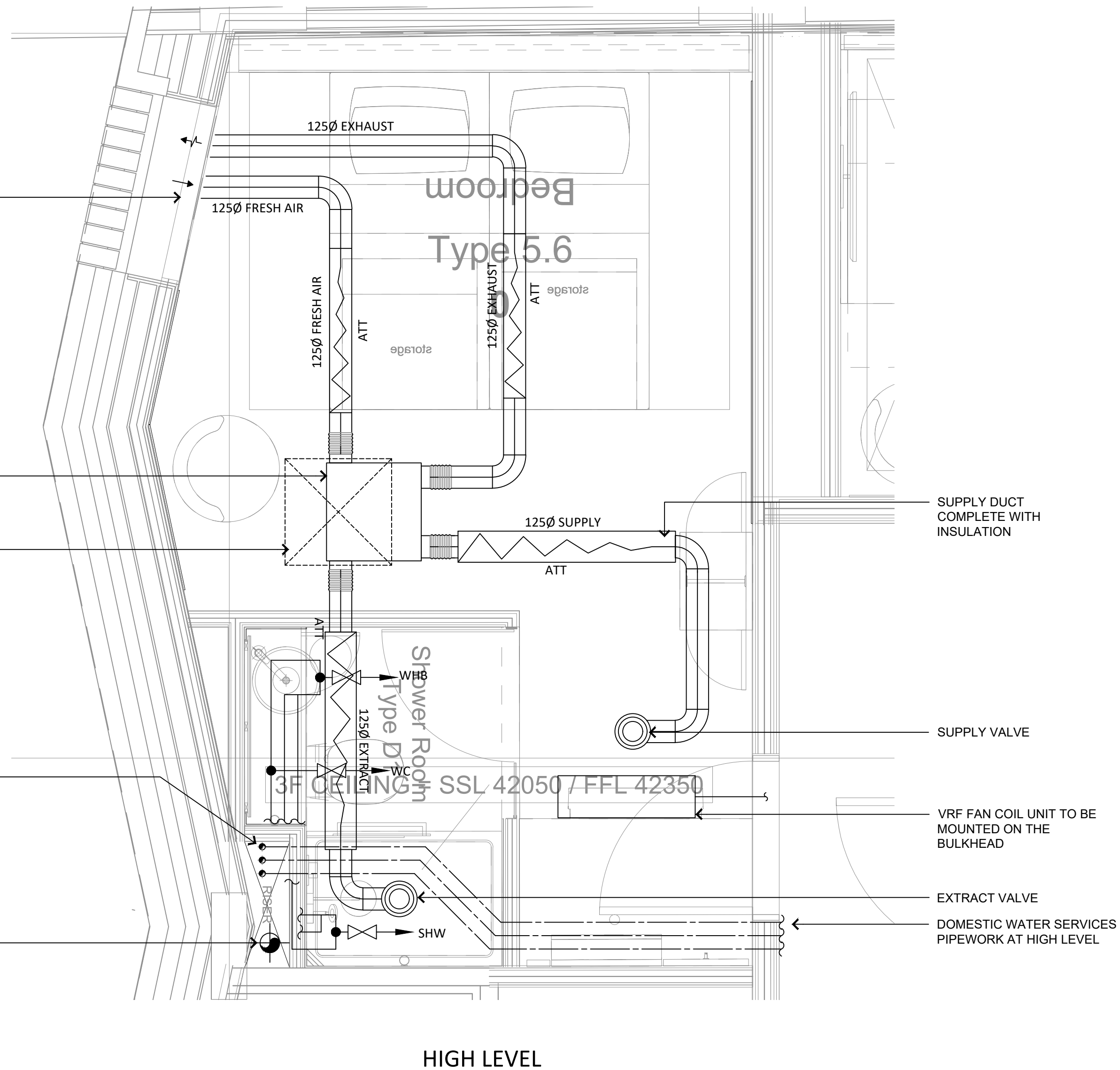
LOW LEVEL

INSULATED FRESH AIR INTAKE & DISCHARGE DUCTS CONNECT TO A COMBINED INTAKE & DISCHARGE LOUVRE VIA SEPARATE INTERNALLY LINED PLENUM BOXES. LOUVRE TO BE SPECIFIED BY THE ARCHITECT

MECHANICAL VENTILATION HEAT RECOVERY UNIT 534mm(W) x 552mm(D) x 221mm(H)  
600x600mm ACCESS PANEL REQUIRED

FROM TOP TO BOTTOM  
22mm BCWS  
22mm DHWS F  
15mm DHWS R  
DOMESTIC WATER SERVICES PIPEWORK DROPS FROM H/L TO L/L TO SERVE ENSUITE. ALL VALVES SHALL BE INSTALLED IN THE VERTICAL PIPEWORK. ACCESS PANEL REQUIRED

LEAK DETECTOR AT LOW LEVEL. REFER TO ARCHITECTS DRAWING FOR SETTING OUT



HIGH LEVEL

SUPPLY DUCT COMPLETE WITH INSULATION

SUPPLY VALVE

VRF FAN COIL UNIT TO BE MOUNTED ON THE BULKHEAD

EXTRACT VALVE

DOMESTIC WATER SERVICES PIPEWORK AT HIGH LEVEL

Revision	Description	Date
C3	CONTRACT ISSUE	23.12.20
C2	DRAWING REVISED TO SUIT THE ARCHITECTS LAYOUT	20.11.20
C1	CONTRACT ISSUE	31.07.20
T3	STAGE 4 - TENDER ADDENDUM	13.12.19
T2	STAGE 4 - TENDER ISSUE	22.11.19
T1	STAGE 4 - TENDER ISSUE	25.10.19

Drawing Status:

CONTRACT

**PSH.** [www.pshconsulting.co.uk](http://www.pshconsulting.co.uk)

**London Office**  
4th Floor, Alto Tower,  
30 Stamford Street,  
London, SE1 9LQ  
T. 0203 039 3840  
E. info@pshconsulting.co.uk

**Wokingham Office**  
6 Alexandra Court,  
Wokingham  
Berkshire, RG40 2SL  
T. 0118 977 4747  
E. info@pshconsulting.co.uk

Architect:  
**MORRIS + COMPANY**

Client:  
**DEMAR HOLDINGS**

Project:  
115 - 119 CAMDEN HIGH STREET

Title:  
TYPICAL HOTEL ROOM TYPE 5.6  
HIGH AND LOW LEVEL  
MECHANICAL SERVICES LAYOUT

Drawn: JTC	Chkd/Appd: AP	Date: 01.08.19
Cad File: 3187-PSH-H-TY-DR-M-8029.DWG	Scale: 1:20@A1	Rev: C3
Drawing Number: 3187-PSH-H-TY-DR-M-8029		