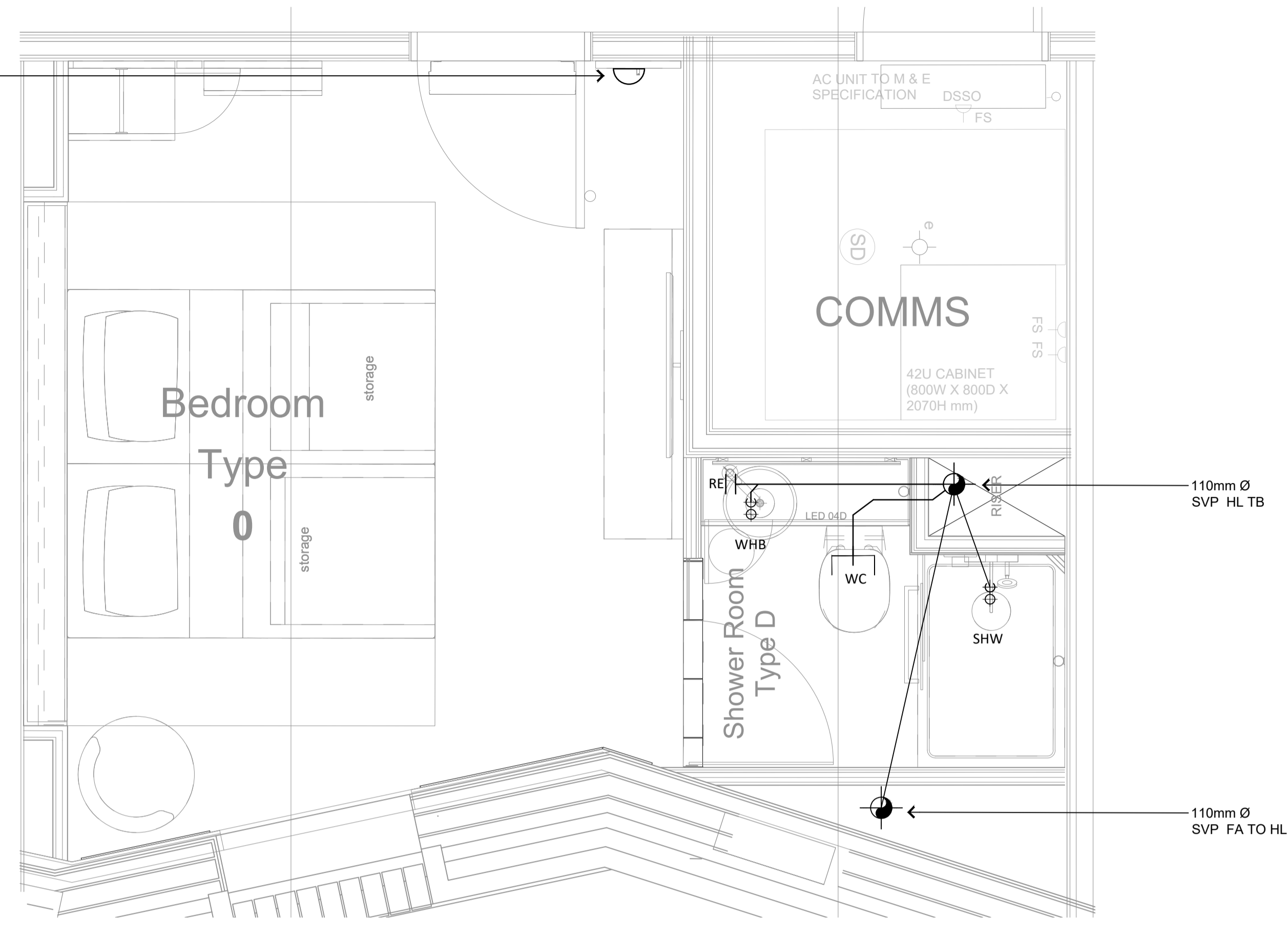


LEAK DETECTOR AT LOW LEVEL—
REFER TO ARCHITECTS DRAWING
FOR SETTING OUT

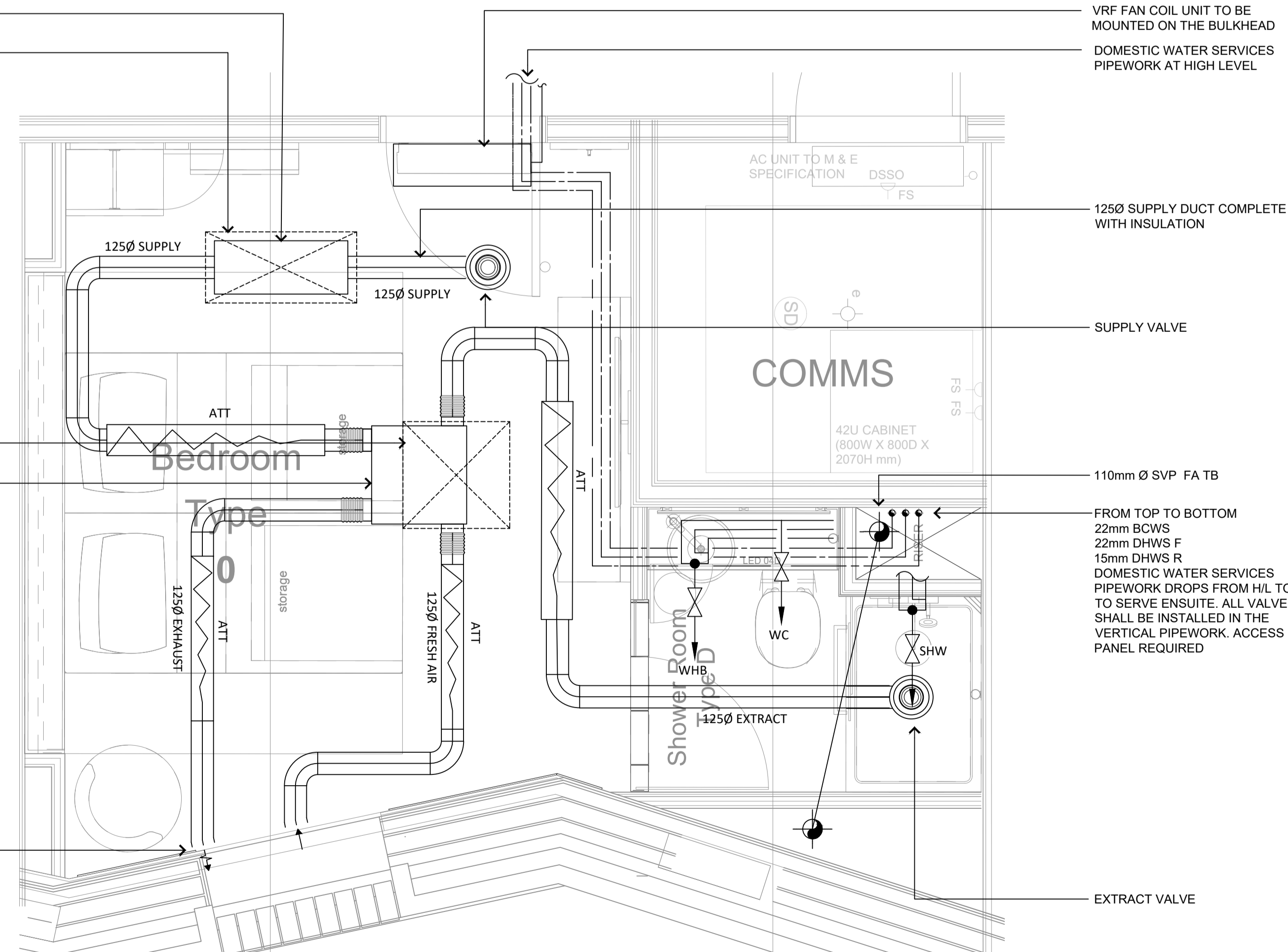


LOW LEVEL

NOX/CARBON FILTER
750mm(W) x 300mm(D) x 145mm(H)
ACCESS PANEL 850mm(W) x 400mm(D)

600x600mm ACCESS
PANEL REQUIRED
MECHANICAL VENTILATION HEAT
RECOVERY UNIT 534mm(W) x
552mm(D) x 221mm(H)

INSULATED FRESH AIR INTAKE & DISCHARGE
DUCTS CONNECT TO A COMBINED INTAKE &
DISCHARGE LOUVRE VIA SEPARATE
INTERNALLY LINED PLENUM BOXES. LOUVRE
TO BE SPECIFIED BY THE ARCHITECT



HIGH LEVEL

VRF FAN COIL UNIT TO BE
MOUNTED ON THE BULKHEAD
DOMESTIC WATER SERVICES
PIPEWORK AT HIGH LEVEL

125Ø SUPPLY DUCT COMPLETE
WITH INSULATION

SUPPLY VALVE

110mm Ø SVP FA TB

FROM TOP TO BOTTOM
22mm BCWS
22mm DHWS F
15mm DHWS R
DOMESTIC WATER SERVICES
PIPEWORK DROPS FROM HL TO L/L
TO SERVE ENSUITE. ALL VALVES
SHALL BE INSTALLED IN THE
VERTICAL PIPEWORK. ACCESS
PANEL REQUIRED

EXTRACT VALVE

NOTES:

1. THIS DRAWING MUST NOT BE USED FOR CONSTRUCTION OR INSTALLATION PURPOSES UNLESS EXPRESSLY STATED.
2. ALL INFORMATION AND LAYOUT ON THIS DRAWING IS SUBJECT TO SITE DIMENSION CHECKS. DO NOT SCALE FROM THIS DRAWING ALWAYS WORK TO NOTED DIMENSIONS.
3. ALL DIMENSIONS ARE IN MILLIMETERS UNLESS NOTED OTHERWISE.
4. ALL DIMENSIONS MUST BE VERIFIED ON SITE BEFORE COMPLETING SHOP DRAWINGS OR SETTING OUT THE WORKS.
5. THIS DRAWING IS TO BE READ IN CONJUNCTION WITH ALL RELEVANT ARCHITECTS, STRUCTURAL ENGINEERS, MEP CONSULTANT DRAWINGS AND SPECIFICATIONS.
6. ANY DISCREPANCIES BETWEEN DRAWINGS AND SPECIFICATION OR RELATED DOCUMENT, THE ENGINEER SHALL BE NOTIFIED IN WRITING FOR VERIFICATION OF DISCREPANCY.
7. SERVICE PENETRATIONS WITHIN FIRE RATED PARTITIONS SHALL BE FIRE STOPPED IN ACCORDANCE WITH THE SPECIFICATION.

| | | |
|----|---|----------|
| C3 | CONTRACT ISSUE | 23.12.20 |
| C2 | DRAWING REVISED TO SUIT THE ARCHITECTS LAYOUT | 20.11.20 |
| C1 | CONTRACT ISSUE | 31.07.20 |
| T3 | STAGE 4 - TENDER ADDENDUM | 13.12.19 |
| T2 | STAGE 4 - TENDER ISSUE | 22.11.19 |
| T1 | STAGE 4 - TENDER ISSUE | 25.10.19 |

Revision Description Date

Drawing Status:

CONTRACT

| | |
|--|--|
| PSH. | www.pshconsulting.co.uk |
| London Office 4th Floor, Alto Tower, 30 Stamford Street, London, SE1 9LQ T. 0203 039 3840 E. info@pshconsulting.co.uk | Wokingham Office 6 Alexandra Court, Wokingham, Berkshire, RG40 2SL T. 0118 977 4747 E. info@pshconsulting.co.uk |

Architect:
MORRIS + COMPANY

Client:

DEMAR HOLDINGS

Project:
115 - 119 CAMDEN HIGH STREET

Title:
TYPICAL HOTEL ROOM TYPE 5.4
HIGH AND LOW LEVEL
MECHANICAL SERVICES LAYOUT

| | | |
|--|-------------------|-------------------|
| Drawn: JTC | Chkd/Appd: AP | Date: 01.08.19 |
| Cad File: 3187-PSH-H-TY-DR-M-8026.DWG | Scale: 1:20@A1 | Rev: C3 |
| Drawing Number: 3187-PSH-H-TY-DR-M-8026 | | |