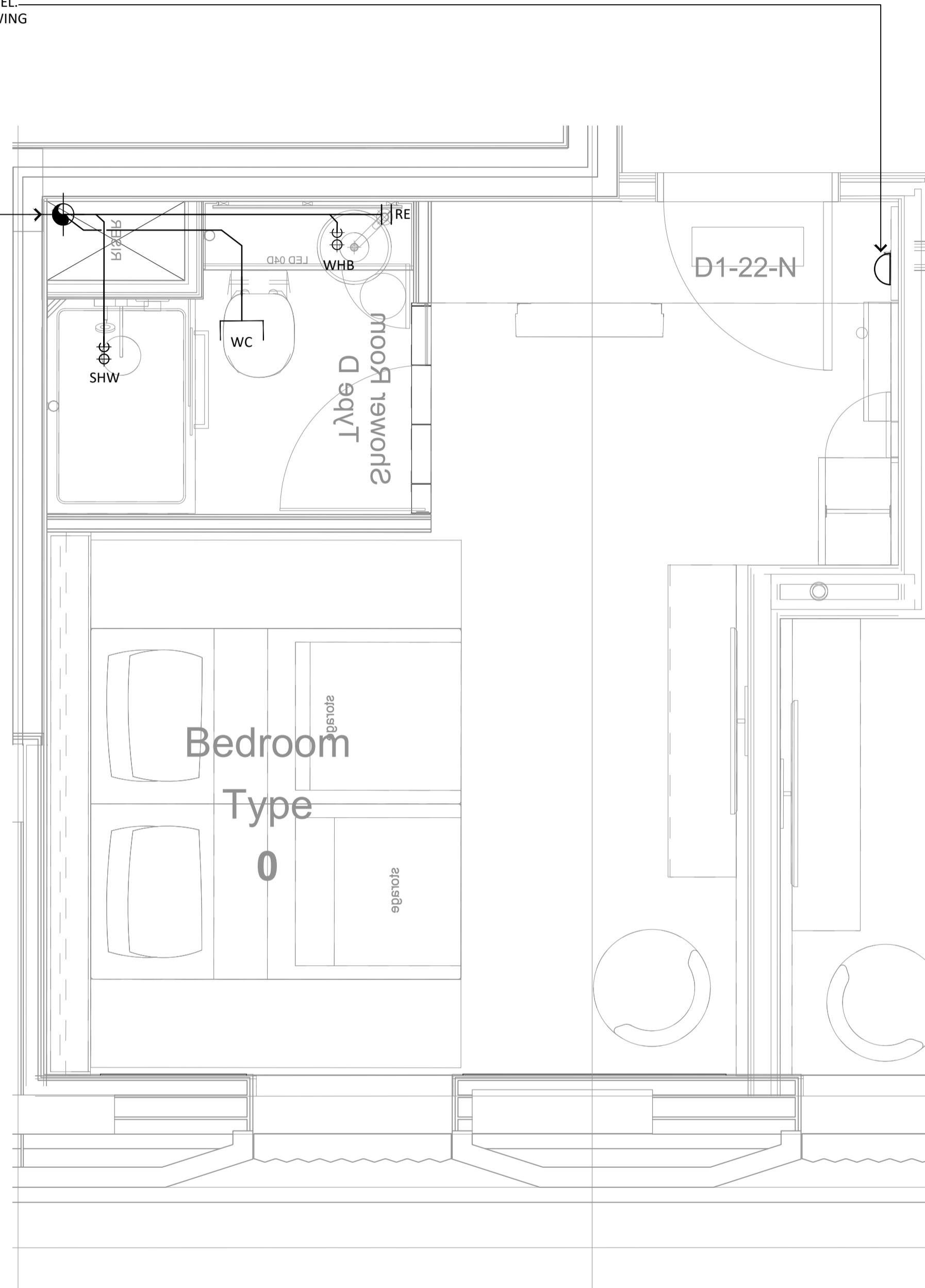


**NOTES:**

1. THIS DRAWING MUST NOT BE USED FOR CONSTRUCTION OR INSTALLATION PURPOSES UNLESS EXPRESSLY STATED.
2. ALL INFORMATION AND LAYOUT ON THIS DRAWING IS SUBJECT TO SITE DIMENSION CHECKS. DO NOT SCALE FROM THIS DRAWING ALWAYS WORK TO NOTED DIMENSIONS.
3. ALL DIMENSIONS ARE IN MILLIMETERS UNLESS NOTED OTHERWISE.
4. ALL DIMENSIONS MUST BE VERIFIED ON SITE BEFORE COMPLETING SHOP DRAWINGS OR SETTING OUT THE WORKS.
5. THIS DRAWING IS TO BE READ IN CONJUNCTION WITH ALL RELEVANT ARCHITECTS, STRUCTURAL ENGINEERS, MEP CONSULTANT DRAWINGS AND SPECIFICATIONS.
6. ANY DISCREPANCIES BETWEEN DRAWINGS AND SPECIFICATION OR RELATED DOCUMENT, THE ENGINEER SHALL BE NOTIFIED IN WRITING FOR VERIFICATION OF DISCREPANCY.
7. SERVICE PENETRATIONS WITHIN FIRE RATED PARTITIONS SHALL BE FIRE STOPPED IN ACCORDANCE WITH THE SPECIFICATION.

LEAK DETECTOR AT LOW LEVEL  
REFER TO ARCHITECTS DRAWING  
FOR SETTING OUT

110mmØ  
SVP FA TB



**LOW LEVEL**

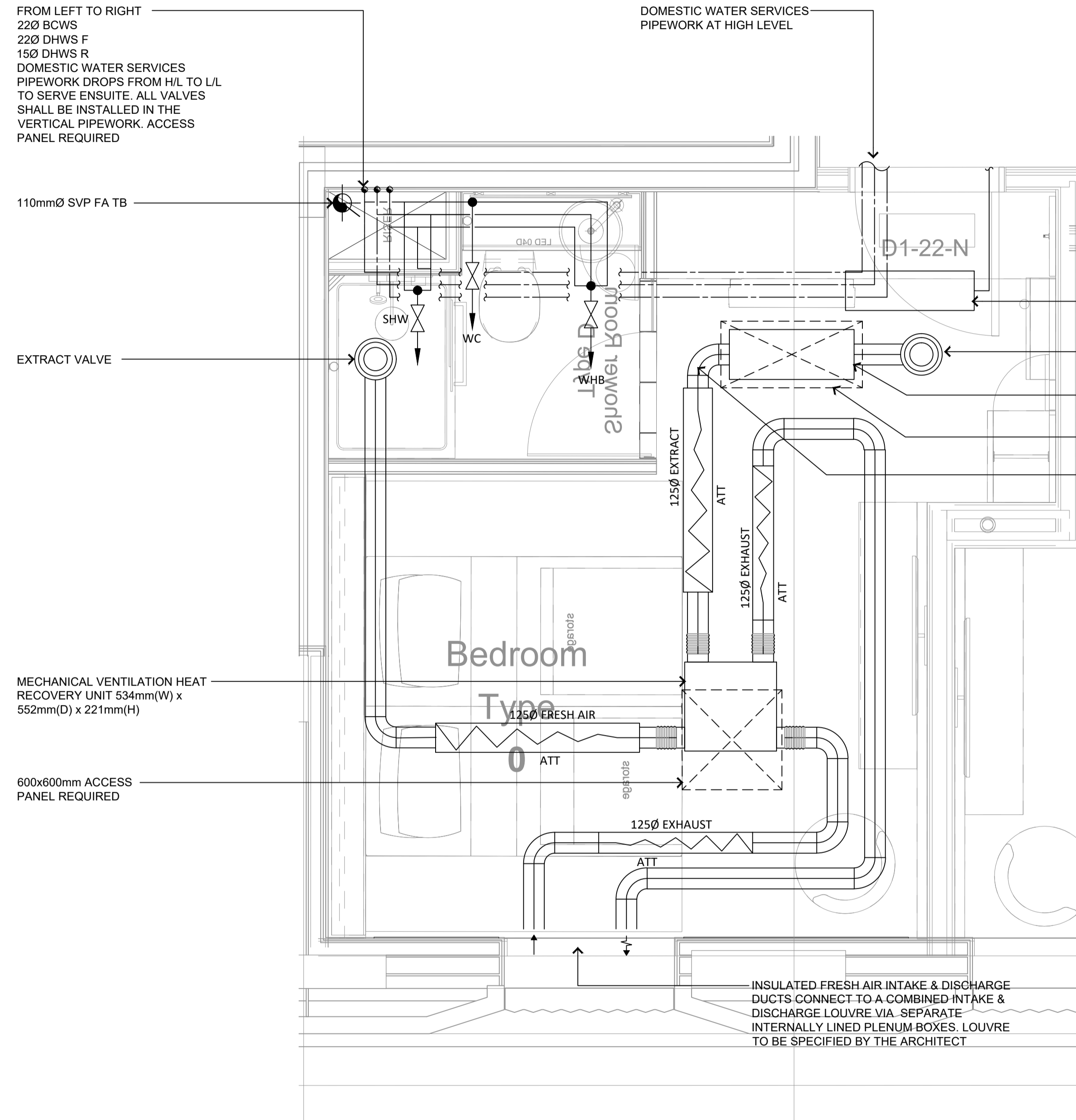
FROM LEFT TO RIGHT  
22Ø BCWS  
22Ø DHWS F  
15Ø DHWS R  
DOMESTIC WATER SERVICES  
PIPEWORK DROPS FROM H/L TO L/L  
TO SERVE ENSUITE. ALL VALVES  
SHALL BE INSTALLED IN THE  
VERTICAL PIPEWORK. ACCESS  
PANEL REQUIRED

110mmØ SVP FA TB

EXTRACT VALVE

MECHANICAL VENTILATION HEAT  
RECOVERY UNIT 534mm(W) x  
552mm(D) x 221mm(H)

600x600mm ACCESS  
PANEL REQUIRED



DOMESTIC WATER SERVICES  
PIPEWORK AT HIGH LEVEL

D1-22-N

VRF FAN COIL UNIT TO BE  
MOUNTED ON THE  
BULKHEAD

SUPPLY VALVE

NOX/CARBON FILTER  
750mm(W) x 300mm(D) x 145mm(H)

ACCESS PANEL 850mm(W)  
x 400mm(D)

125Ø SUPPLY DUCT  
COMPLETE WITH  
INSULATION

INSULATED FRESH AIR INTAKE & DISCHARGE  
DUCTS CONNECT TO A COMBINED INTAKE &  
DISCHARGE LOUVRE VIA SEPARATE  
INTERNALLY LINED PLENUM BOXES. LOUVRE  
TO BE SPECIFIED BY THE ARCHITECT

**HIGH LEVEL**

C3	CONTRACT ISSUE	23.12.20
C2	DRAWING REVISED TO SUIT THE ARCHITECTS LAYOUT	20.11.20
C1	CONTRACT ISSUE	31.07.20
T3	STAGE 4 - TENDER ADDENDUM	13.12.19
T2	STAGE 4 - TENDER ISSUE	22.11.19
T1	STAGE 4 - TENDER ISSUE	25.10.19

Revision Description Date

Drawing Status:

**CONTRACT**

<b>PSH.</b>		www.pshconsulting.co.uk
<b>London Office</b> 4th Floor, Alto Tower, 30 Stamford Street, London, SE1 9LQ T. 0203 039 3840 E. info@pshconsulting.co.uk	<b>Wokingham Office</b> 6 Alexandra Court, Wokingham Berkshire, RG40 2SL T. 0118 977 4747 E. info@pshconsulting.co.uk	

Architect:  
**MORRIS + COMPANY**

Client:  
**DEMAR HOLDINGS**

Project:  
**115 - 119 CAMDEN HIGH STREET**

Title:  
**TYPICAL HOTEL ROOM TYPE 5.1  
HIGH AND LOW LEVEL  
MECHANICAL SERVICES LAYOUT**

Drawn: JTC	Chkd/Appd: AP	Date: 01.08.19
Cad File: 3187-PSH-H-TY-DR-M-8022.DWG	Scale: 1:20@A1	
Drawing Number: 3187-PSH-H-TY-DR-M-8022	Rev: C3	