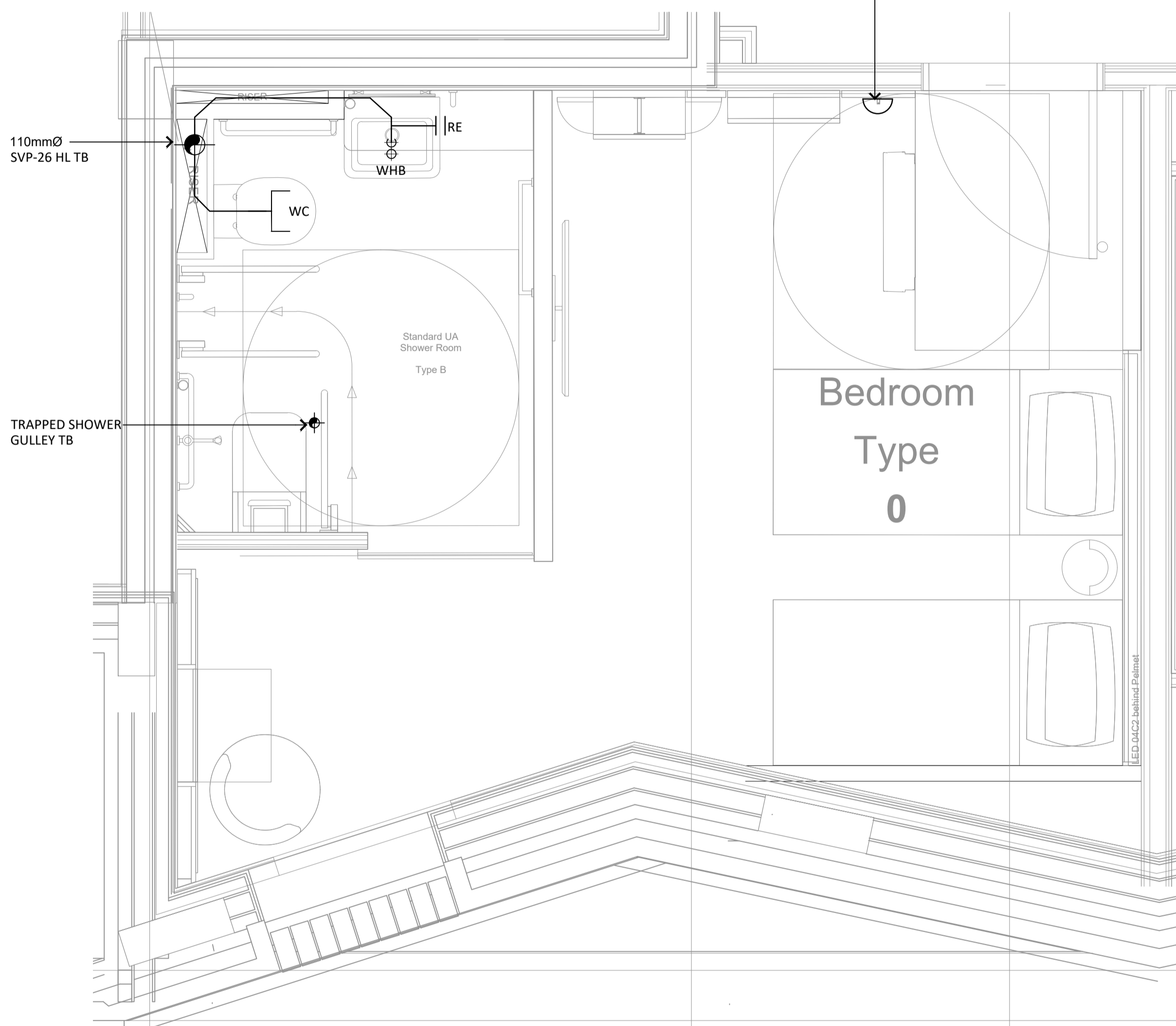


NOTES:

1. THIS DRAWING MUST NOT BE USED FOR CONSTRUCTION OR INSTALLATION PURPOSES UNLESS EXPRESSLY STATED.
2. ALL INFORMATION AND LAYOUT ON THIS DRAWING IS SUBJECT TO SITE DIMENSION CHECKS. DO NOT SCALE FROM THIS DRAWING ALWAYS WORK TO NOTED DIMENSIONS.
3. ALL DIMENSIONS ARE IN MILLIMETERS UNLESS NOTED OTHERWISE.
4. ALL DIMENSIONS MUST BE VERIFIED ON SITE BEFORE COMPLETING SHOP DRAWINGS OR SETTING OUT THE WORKS.
5. THIS DRAWING IS TO BE READ IN CONJUNCTION WITH ALL RELEVANT ARCHITECTS, STRUCTURAL ENGINEERS, MEP CONSULTANT DRAWINGS AND SPECIFICATIONS.
6. ANY DISCREPANCIES BETWEEN DRAWINGS AND SPECIFICATION OR RELATED DOCUMENT, THE ENGINEER SHALL BE NOTIFIED IN WRITING FOR VERIFICATION OF DISCREPANCY.
7. SERVICE PENETRATIONS WITHIN FIRE RATED PARTITIONS SHALL BE FIRE STOPPED IN ACCORDANCE WITH THE SPECIFICATION.

LEAK DETECTOR AT LOW LEVEL.
REFER TO ARCHITECTS DRAWING
FOR SETTING OUT



LOW LEVEL

110mmØ SVP-26 HL TB

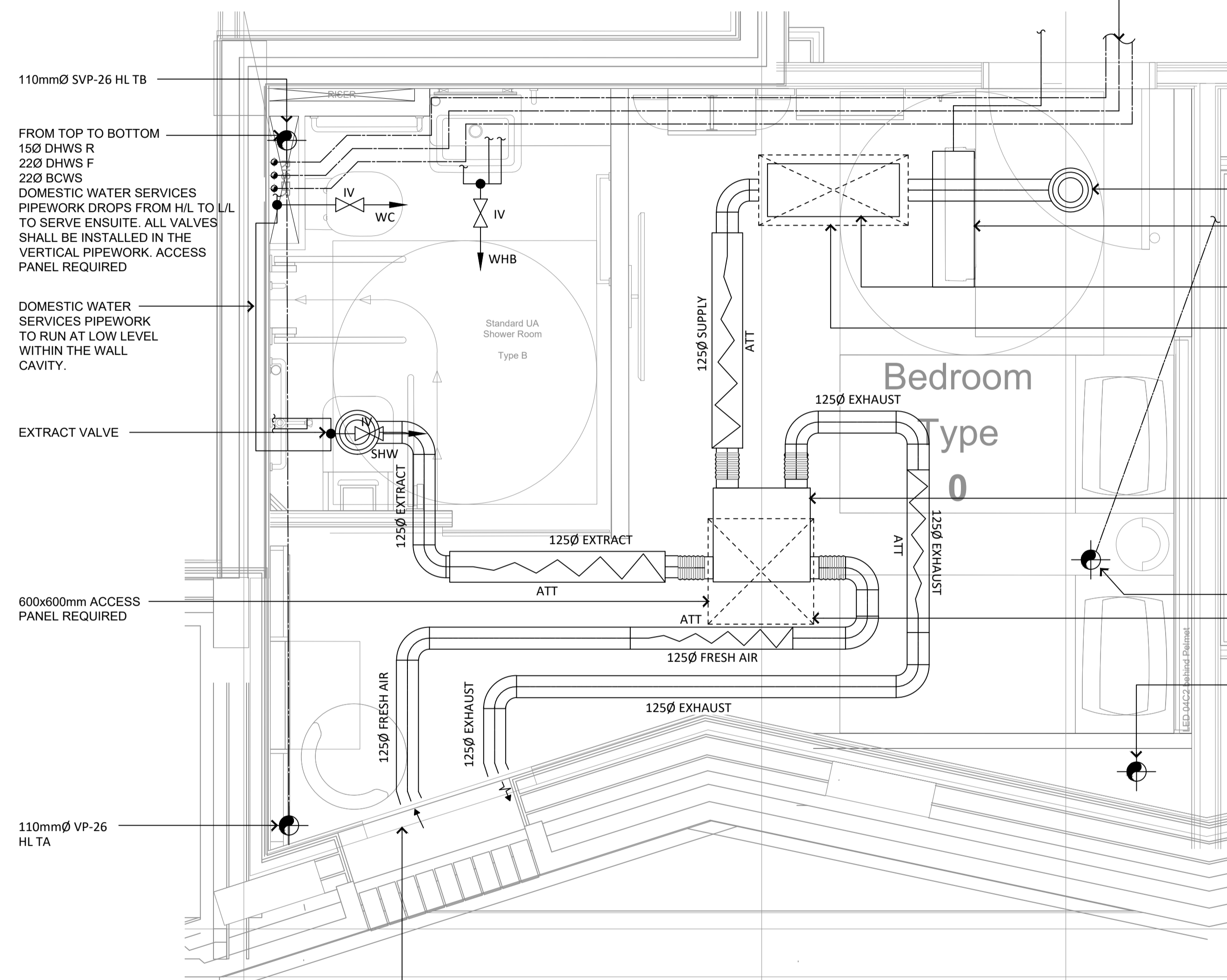
FROM TOP TO BOTTOM
15Ø DHWS R
22Ø DHWS F
22Ø BCWS
DOMESTIC WATER SERVICES
PIPEWORK DROPS FROM H/L TO L/L
TO SERVE ENSUITE. ALL VALVES
SHALL BE INSTALLED IN THE
VERTICAL PIPEWORK. ACCESS
PANEL REQUIRED

DOMESTIC WATER
SERVICES PIPEWORK
TO RUN AT LOW LEVEL
WITHIN THE WALL
CAVITY.

EXTRACT VALVE

600x600mm ACCESS
PANEL REQUIRED

110mmØ VP-26
HL TA



HIGH LEVEL

INSULATED FRESH AIR INTAKE & DISCHARGE
DUCTS CONNECT TO A COMBINED INTAKE &
DISCHARGE LOUVRE VIA SEPARATE
INTERNALLY LINED PLENUM BOXES. LOUVRE
TO BE SPECIFIED BY THE ARCHITECT

- SUPPLY VALVE
- VRF FAN COIL UNIT TO BE MOUNTED ON BULKHEAD
- NOX/CARBON FILTER 750mm(W) x 300mm(D) x 145mm(H)
- ACCESS PANEL 850mm(W) x 400mm(D)
- MECHANICAL VENTILATION HEAT RECOVERY UNIT 534mm(W) x 552mm(D) x 221mm(H)
- 100mm SVP-21 FA TO HL
- 600mm x 600mm ACCESS PANEL REQUIRED
- 110mm RWP-05 FA TB

Revision	Description	Date
C3	CONTRACT ISSUE	23.12.20
C2	DRAWING REVISED TO SUIT THE ARCHITECTS LAYOUT	20.11.20
C1	CONTRACT ISSUE	31.07.20
T2	STAGE 4 - TENDER ISSUE	22.11.19
T1	STAGE 4 - TENDER ISSUE	25.10.19

Drawing Status:

CONTRACT

PSH. www.pshconsulting.co.uk

London Office
4th Floor, Alto Tower,
30 Stamford Street,
London, SE1 9LQ
T. 0203 039 3840
E. info@pshconsulting.co.uk

Wokingham Office
6 Alexandra Court,
Wokingham
Berkshire, RG40 2SL
T. 0118 977 4747
E. info@pshconsulting.co.uk

Architect:
MORRIS + COMPANY

Client:
DEMAR HOLDINGS

Project:
115 - 119 CAMDEN HIGH STREET

Title:
**TYPICAL HOTEL ROOM 312 TYPE 2.2
HIGH AND LOW LEVEL
MECHANICAL SERVICES LAYOUT**

Drawn: JTC	Chkd/Appd: AP	Date: 01.08.19
Cad File: 3187-PSH-H-TY-DR-M-8017.DWG	Scale: 1:20@A1	Rev: C3
Drawing Number: 3187-PSH-H-TY-DR-M-8017		