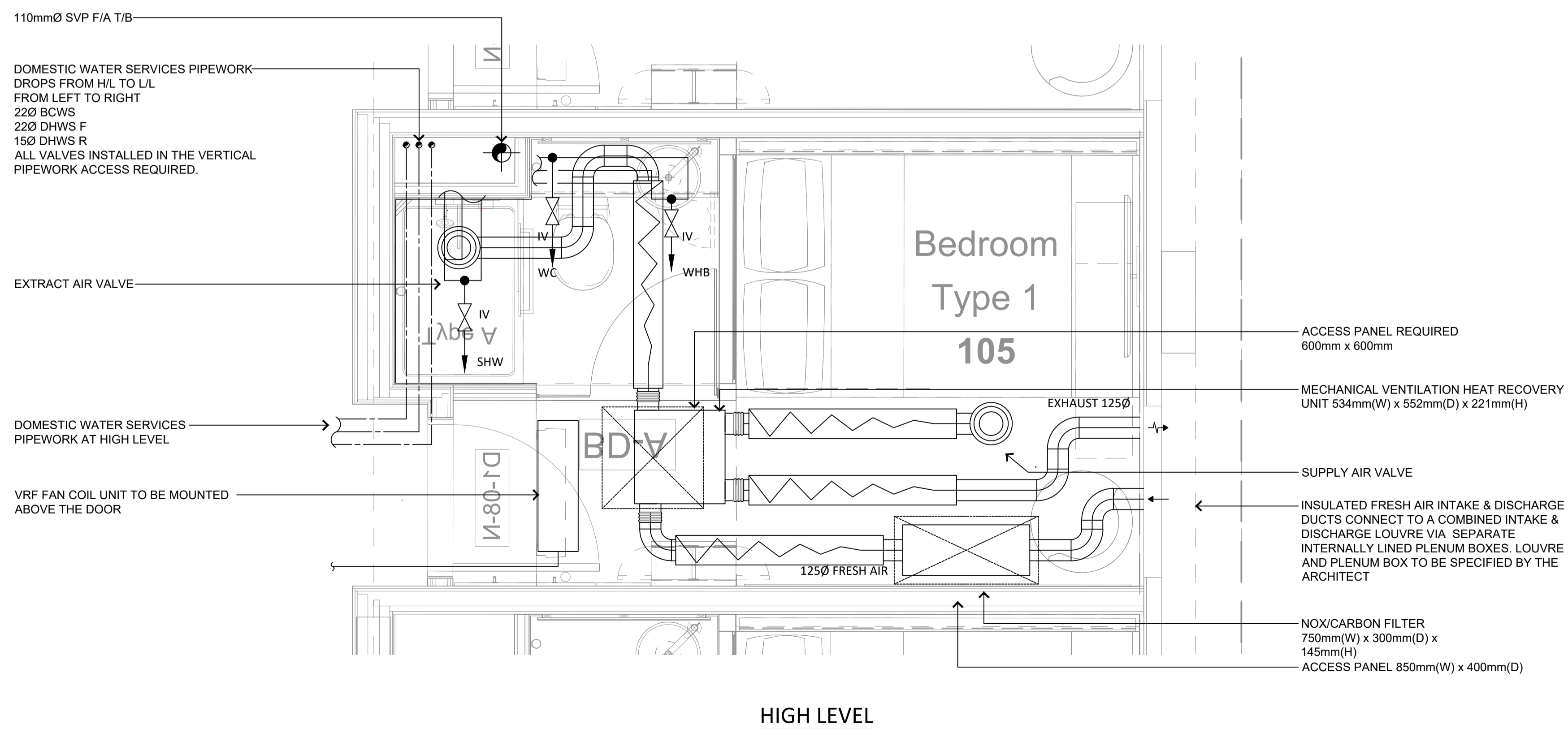
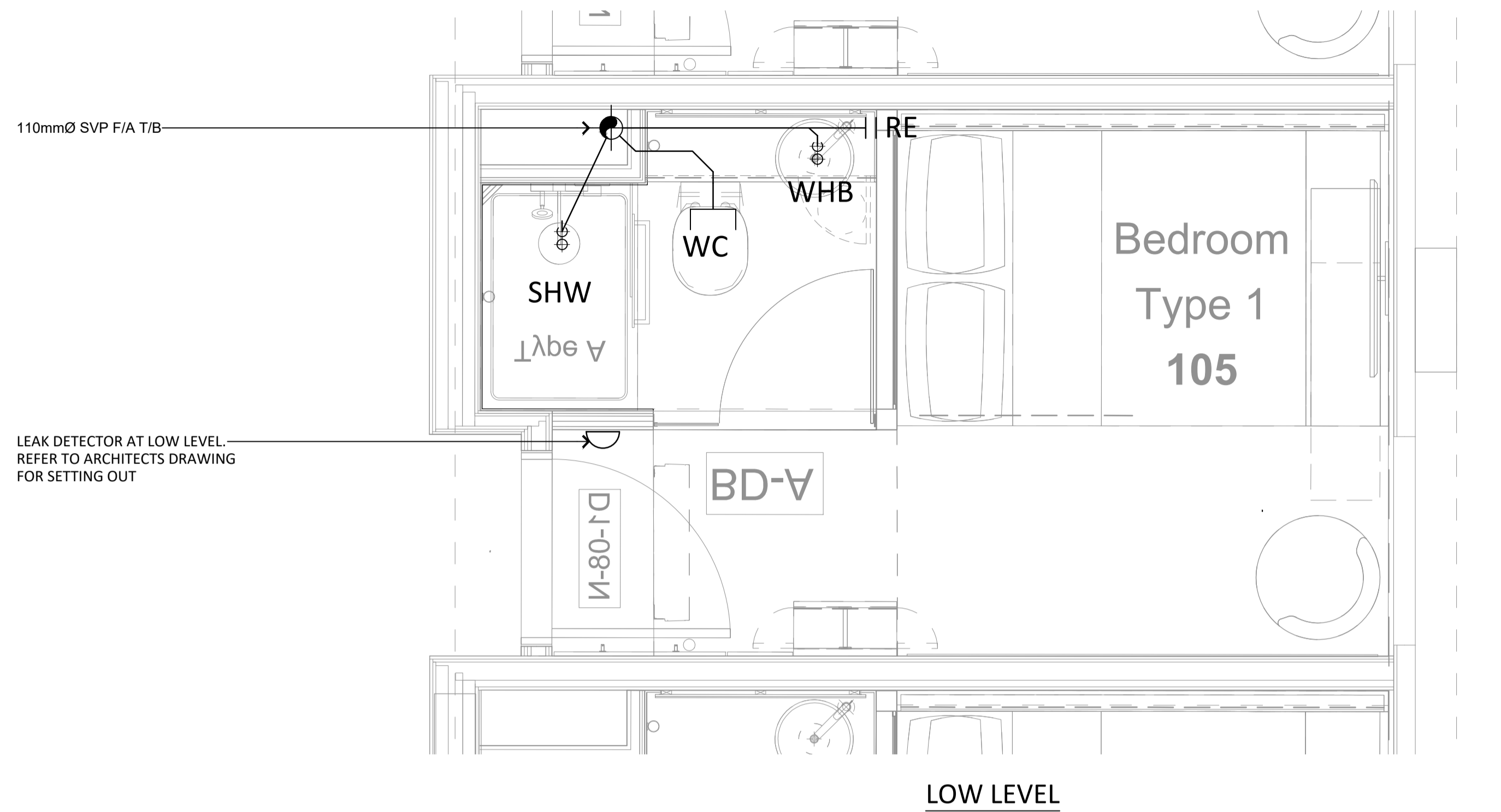


NOTES:

1. THIS DRAWING MUST NOT BE USED FOR CONSTRUCTION OR INSTALLATION PURPOSES UNLESS EXPRESSLY STATED.
2. ALL INFORMATION AND LAYOUT ON THIS DRAWING IS SUBJECT TO SITE DIMENSION CHECKS. DO NOT SCALE FROM THIS DRAWING ALWAYS WORK TO NOTED DIMENSIONS.
3. ALL DIMENSIONS ARE IN MILLIMETERS UNLESS NOTED OTHERWISE.
4. ALL DIMENSIONS MUST BE VERIFIED ON SITE BEFORE COMPLETING SHOP DRAWINGS OR SETTING OUT THE WORKS.
5. THIS DRAWING IS TO BE READ IN CONJUNCTION WITH ALL RELEVANT ARCHITECTS, STRUCTURAL ENGINEERS, MEP CONSULTANT DRAWINGS AND SPECIFICATIONS.
6. ANY DISCREPANCIES BETWEEN DRAWINGS AND SPECIFICATION OR RELATED DOCUMENT, THE ENGINEER SHALL BE NOTIFIED IN WRITING FOR VERIFICATION OF DISCREPANCY.
7. SERVICE PENETRATIONS WITHIN FIRE RATED PARTITIONS SHALL BE FIRE STOPPED IN ACCORDANCE WITH THE SPECIFICATION.



Revision	Description	Date
C3	CONTRACT ISSUE	23.12.20
C2	DRAWING REVISED TO SUIT THE ARCHITECTS LAYOUT	20.11.20
C1	CONTRACT ISSUE	31.07.20
T4	STAGE - TENDER ADDENDUM	20.12.19
T3	STAGE 4 - TENDER ADDENDUM	13.12.19
T2	STAGE 4 - TENDER ISSUE	22.11.19
T1	STAGE 4 - TENDER ISSUE	25.10.19

Drawing Status:

CONTRACT

PSH. www.pshconsulting.co.uk

London Office
4th Floor, Alto Tower,
30 Stamford Street,
London, SE1 9LQ
T. 0203 039 3840
E. info@pshconsulting.co.uk

Wokingham Office
6 Alexandra Court,
Wokingham
Berkshire, RG40 2SL
T. 0118 977 4747
E. info@pshconsulting.co.uk

Architect:
MORRIS + COMPANY

Client:
DEMAR HOLDINGS

Project:
115 - 119 CAMDEN HIGH STREET

Title:
**TYPICAL HOTEL ROOM TYPE 1.0
HIGH AND LOW LEVEL
MECHANICAL SERVICES LAYOUT**

Drawn: JTC	Chkd/Appd: AP	Date: 01.08.19
Cad File: 3187-PSH-H-TY-DR-M-8001.DWG	Scale: 1:20@A1	Rev: C3
Drawing Number: 3187-PSH-H-TY-DR-M-8001		