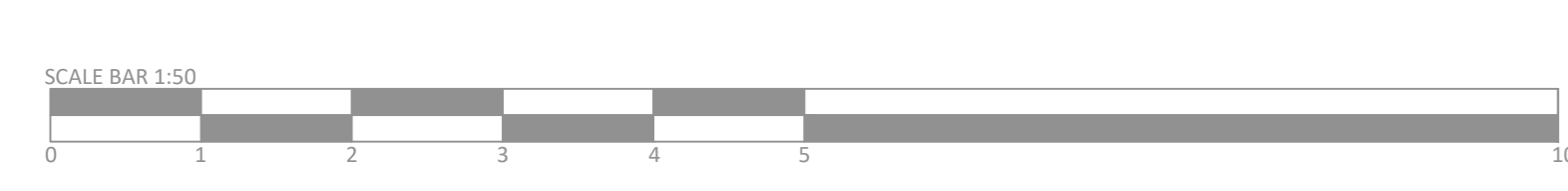
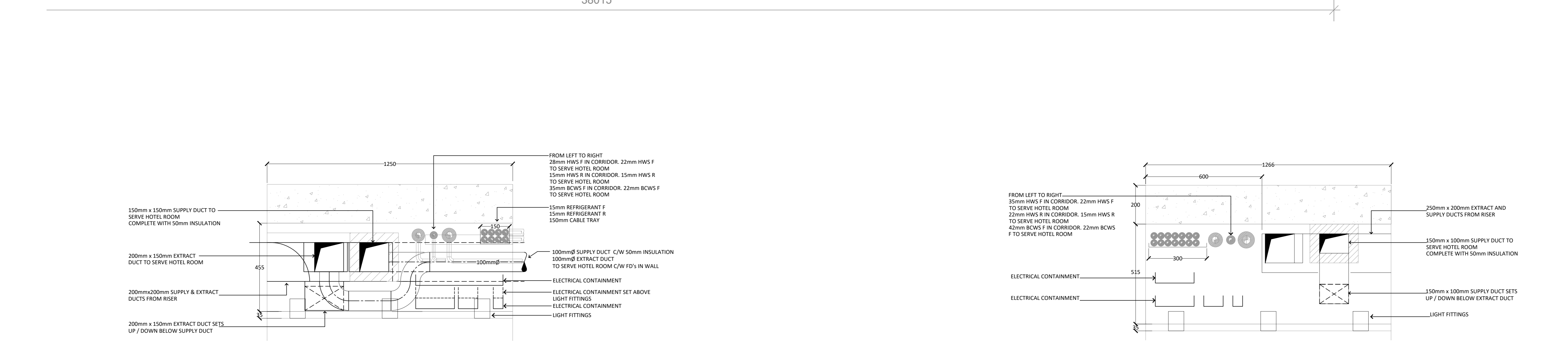
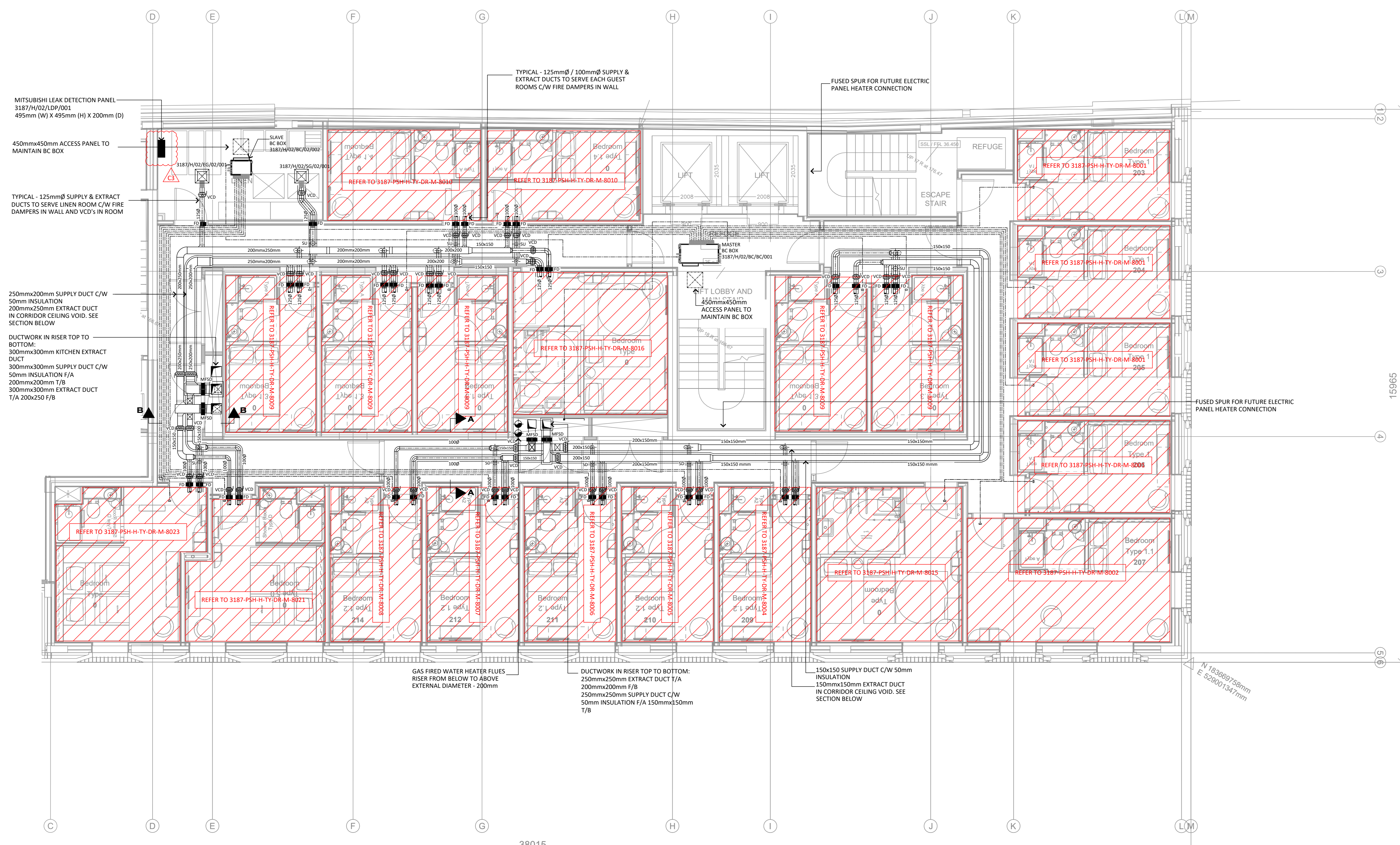


- NOTES:
- THIS DRAWING MUST NOT BE USED FOR CONSTRUCTION OR INSTALLATION PURPOSES UNLESS EXPRESSLY STATED.
 - ALL INFORMATION AND LAYOUT ON THIS DRAWING IS SUBJECT TO SITE DIMENSION CHECKS. DO NOT SCALE FROM THIS DRAWING ALWAYS WORK TO NOTED DIMENSIONS.
 - ALL DIMENSIONS ARE IN MILLIMETERS UNLESS NOTED OTHERWISE.
 - ALL DIMENSIONS MUST BE VERIFIED ON SITE BEFORE COMPLETING SHOP DRAWINGS OR SETTING OUT THE WORKS.
 - THIS DRAWING IS TO BE READ IN CONJUNCTION WITH ALL RELEVANT ARCHITECTS, STRUCTURAL ENGINEERS, MEP CONSULTANT DRAWINGS AND SPECIFICATIONS.
 - ANY DISCREPANCIES BETWEEN DRAWINGS AND SPECIFICATION OR RELATED DOCUMENT, THE ENGINEER SHALL BE NOTIFIED IN WRITING FOR VERIFICATION OF DISCREPANCY.
 - ALL SERVICES PENETRATIONS THROUGH FIRE RATED PARTITIONS SHALL BE SLEEVED AND FIRE STOPPED.
 - ALL DUCTWORK SHALL BE FIRE RATED FOR STABILITY AND INTEGRITY.
 - REFRIGERANT PIPEWORK SHALL DISTRIBUTE WITHIN CORRIDOR CEILING VOID ON GALVANIZED STEEL CABLE TRAY.



Revision	Description	Date
C3	REVISED FOR CONTRACT ISSUE	23.12.20
C2	DRAWING REVISED TO SUIT THE ARCHITECTS LAYOUT	20.11.20
C1	CONTRACT ISSUE	31.07.20
T2	STAGE 4 TENDER ISSUE	22.11.19
T1	STAGE 4 TENDER ISSUE	25.10.19
P1	STAGE 3 - PRELIMINARY ISSUE	16.08.19

Drawing Status: **CONTRACT**

PSH. www.pshconsulting.co.uk

London Office
4th Floor, Alto Tower,
30 Stamford Street,
London, SE1 9LQ
T: 0203 029 3840
E: info@pshconsulting.co.uk

Wokingham Office
6 Alexandra Court,
Wokingham
Berkshire, RG40 2SL
T: 0118 977 4747
E: info@pshconsulting.co.uk

Architect: **MORRIS + COMPANY**

Client: **DEMAR HOLDINGS**

Project: **115 - 119 CAMDEN HIGH STREET**

Title: **SECOND FLOOR MECHANICAL SERVICES DUCTWORK LAYOUT**

Drawn: CDL	Chkd/Appd: MB	Date: 21.04.19
Scale: 1:50@A0		
Drawing Number: 3187-PSH-H-02-DR-M-7007		Rev: C3