

- NOTES:**
- THIS DRAWING MUST NOT BE USED FOR CONSTRUCTION OR INSTALLATION PURPOSES UNLESS EXPRESSLY STATED.
 - ALL INFORMATION AND LAYOUT ON THIS DRAWING IS SUBJECT TO SITE DIMENSION CHECKS. DO NOT SCALE FROM THIS DRAWING ALWAYS WORK TO NOTED DIMENSIONS.
 - ALL DIMENSIONS ARE IN MILLIMETERS UNLESS NOTED OTHERWISE.
 - ALL DIMENSIONS MUST BE VERIFIED ON SITE BEFORE COMPLETING SHOP DRAWINGS OR SETTING OUT THE WORKS.
 - THIS DRAWING IS TO BE READ IN CONJUNCTION WITH ALL RELEVANT ARCHITECTS, STRUCTURAL ENGINEERS, MEP CONSULTANT DRAWINGS AND SPECIFICATIONS.
 - ANY DISCREPANCIES BETWEEN DRAWINGS AND SPECIFICATION OR RELATED DOCUMENT, THE ENGINEER SHALL BE NOTIFIED IN WRITING FOR VERIFICATION OF DISCREPANCY.

BIN STORE EXTRACT FAN LOUVER.

- 2981/5 AT 2.5m/s
- 0.12m² FREE AREA REQUIRED.
- 800mmx300mm LOUVER REQUIRED AT 50% FREE AREA.
- PLENUM BOX 800mm(L)x300mm(D)x300mm(H)
- FREE AREA REQUIRED 0.16m²
- DISCHARGE LOUVER : 3187/H/G/DI/001

BIN STORE

800mm X 300mm FRESH AIR INTAKE LOUVER AT LOW LEVEL .
INTAKE LOUVER : 3187/H/G/SI/005

LV SWITCH ROOM

200mm X 200mm FRESH AIR INTAKE LOUVER WITH INTUMESCENT CORE AT LOW LEVEL IN DOOR.
200mm x200mm EXHAUST AIR LOUVER WITH INTUMESCENT CORE AT HIGH LEVEL IN FACADE.
3187/H/G/SI/006, 3187/H/G/DI/005

CYCLE STORES

100mm X 100mm FRESH AIR INTAKE LOUVER WITH INTUMESCENT CORE AT LOW LEVEL IN DOOR.
3187/H/G/SI/007, 3187/H/G/DI/006
100mm x 100mm EXHAUST AIR LOUVER WITH INTUMESCENT CORE AT HIGH LEVEL IN FACADE.
3187/H/G/SI/008, 3187/H/G/DI/007

FRESH AIR INTAKE MECHANICAL FIRE SMOKE DAMPER LINKED TO THE FIRE ALARM SYSTEM.

FIRE DAMPER 1000mm x 300mm, FRAME size 1150mm X 450mm
3187/H/G/MFS/001

BIN STORE EXTRACT FAN AT H/L

- 3187/H/G/EF/001 - 400mm(L)x400mm(W)x400mm(D)

BASEMENT KITCHEN SUPPLY AIR DUCT DROP FROM H/L T/B

300x300mm
BASEMENT KITCHEN EXHAUST AIR DUCT RISE F/B T/B
300x300mm

REAR ENTRY INTERNALLY LINED SUPPLY AIR PLENUM BOX

2100mm(L) X 300mm(D) X 200mm(H). CONNECTS TO SUPPLY AIR LINEAR SLOT DIFFUSER 3187/H/G/SD/001 9000mm(L) X 122mm(D) X 238mm(H).

- SECONDARY DUCTWORK TO PLENUM BOX 650mm X 150mm PLUS INSULATION.

BASEMENT KITCHEN EXTRACT DUCT H/L T/A

300mm x 300mm

LINEAR SUPPLY DIFFUSER

- 3187/H/G/SD/001
- 9000mm(W) x 122mm(D) x 238mm(H)

HEATING AND COOLING SHALL BE PROVIDED TO THE OFFICE VIA A WALL-MOUNTED VRF FAN COIL UNIT

- 3187/H/B/FCU/001-773mm(W)x237mm(D)x299mm(H)

FAN COIL UNIT

- 3187/H/B/FCU/003-900mm(W)x732mm(D)x250mm(H)

MECHANICAL VENTILATION HEAT RECOVERY UNIT

- 3187/H/G/MVHR/001
- 1500mm(W)x1980mm(D)x500mm(H)

MITSUBISHI VRF CENTRALISED CONTROLLER 3187/H/G/CC/001

- AE-200 284mm(W) X 200mm (H) X 65mm (D)

LINEAR SUPPLY DIFFUSER

- 3187/H/G/SD/003

FAN COIL UNIT

- 3187/H/B/FCU/002-900mm(W)x732mm(D)x250mm(H)
- 600mm x 600mm ACCESS PANEL REQUIRED

REAR ENTRY SUPPLY AIR PLENUM BOX.

- 2100mm(W)x300mm(D)x300mm(H) CONNECTS TO SUPPLY LINEAR SLOT DIFFUSER
- 3500mm(W)x122mm(D)x283mm(H)
- 3187/H/G/SD/001-150mm(H)x300mm(W)

GROUND FLOOR MVHR DISCHARGE LOUVER.

- 1861/5 AT 2.5m/s
- 0.074m² FREE AREA REQUIRED. LOUVER
- 500mm x 300mm AT 50% FREE AREA.
- DISCHARGE LOUVER : 3187/H/G/DI/002

BASEMENT MVHR DISCHARGE LOUVER.

- 6531/5 AT 2.75m/s
- 0.24m² FREE AREA REQUIRED. LOUVER
- 1600mm x 300mm AT 50% FREE AREA.
- DISCHARGE LOUVER : 3187/H/G/DI/003

BASEMENT PLANT ROOM DISCHARGE LOUVER.

- 0.04m² FREE AREA REQUIRED. LOUVER
- 300mm x 300mm AT 50% FREE AREA.
- DISCHARGE LOUVER : 3187/H/G/DI/004

RETURN AIR LINEAR SLOT DIFFUSER

- 3187/H/G/SD/004

KITCHEN SUPPLY FAN FRESH AIR INTAKE VIA LOUVER.

- 3401/5 AT 2.5m/s
- 0.136m² FREE AREA REQUIRED.
- 900mmx300mm LOUVER REQUIRED AT 50% FREE AREA.
- INTAKE LOUVER : 3187/H/G/SI/001

BASEMENT PLANT ROOM FRESH AIR INTAKE LOUVER.

- 0.08m² FREE AREA REQUIRED.
- 150mmx300mm LOUVER REQUIRED AT 50% FREE AREA.
- INTAKE LOUVER : 3187/H/G/SI/002

BIN STORE EXHAUST AIR MECHANICAL FIRE SMOKE DAMPER LINKED TO THE FIRE ALARM SYSTEM.

FIRE DAMPER 800mm x 300mm, FRAME SIZE 950mm x 450mm.
3187/H/G/MFS/002

BASEMENT KITCHEN SUPPLY AHU AT H/L

- 3187/H/G/AHU/001 - 1591mm(W)x670mm(D)x250mm(H)

FUSED SPUR FOR FUTURE ELECTRIC PANEL HEATER CONNECTION

ELECTRICAL PANEL HEATER

- 3187/H/B/EPH/003 - 1000mm(W)x500mm(H)x40mm(D)

Fire exit

FUSED SPUR FOR FUTURE ELECTRIC PANEL HEATER CONNECTION

REAR ENTRY SUPPLY AIR PLENUM BOX.

- 2100mm(W)x300mm(D)x300mm(H) CONNECTS TO SUPPLY LINEAR SLOT DIFFUSER 3187/H/G/SD/002 9000mm(W)x122mm(D)x283mm(H)
- 3187/H/G/SD/002-SECONDARY DUCTWORK TO PLENUM BOX 150mm(H)x650mm(W) COMPLETE WITH INSULATION

VRF REFRIGERANT PIPEWORK DROPS FA TO HL TO CONNECT TO THE BC BOX SERVING THE GROUND FLOOR:

- 3187/H/G/BCC/001-911mm(W)x369mm(D)x246mm(H)
- 450mm x 450mm ACCESS PANEL REQUIRED

FAN COIL UNIT

- 3187/H/G/FCU/004 - 900mm(W)x732mm(D)x250mm(H)

VRF REFRIGERANT HL T/A

GAS FIRED WATER HEATER FLUES RISE FROM HL TA TO DISCHARGE AT ROOF LEVEL.

TOP TO BOTTOM:

- VRF REFRIGERANT HL T/B
- DX REFRIGERANT R HL T/B
- DX REFRIGERANT R HL T/B

400mm x 350mm BASEMENT FRESH AIR INTAKE DUCT C/W 50mm INSULATION

DOOR CURTAIN:

- 3187/H/G/DC/001

2 No. 200mm DIRECT GAS- FIRED WATER HEATER FLUE FB TO HL.

SIDE ACCESS REQUIRED OT THE CARBON/NOx FILTER.

BASEMENT MVHR FRESH AIR INTAKE LOUVER.

- 1811/5 AT 2.5m/s
- 0.23m² FREE AREA REQUIRED.
- 1500mmx300mm LOUVER REQUIRED AT 50% FREE AREA.
- INTAKE LOUVER : 3187/H/G/SI/004

CARBON/NOx FILTER.

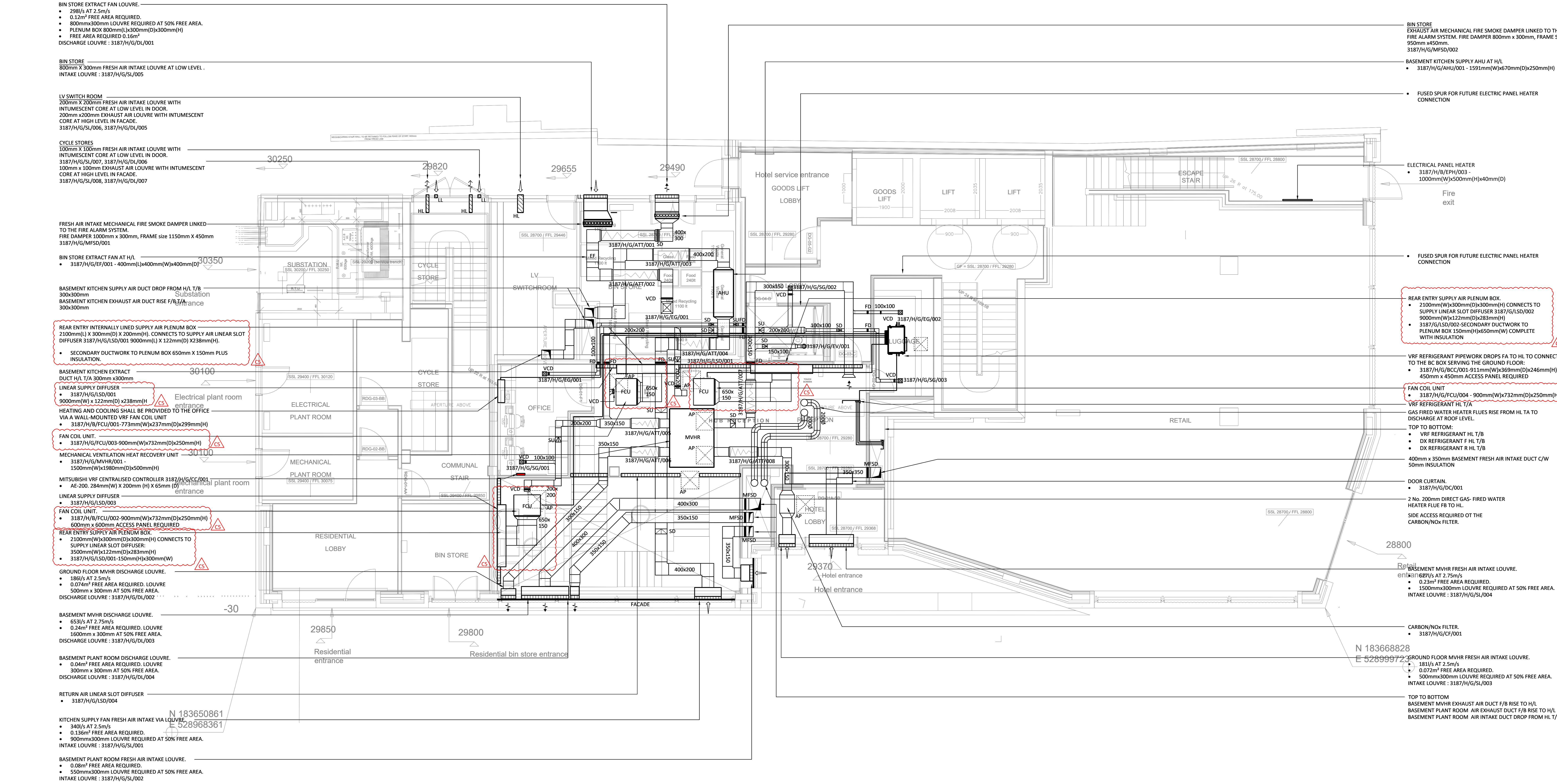
- 3187/H/G/CF/001

GROUND FLOOR MVHR FRESH AIR INTAKE LOUVER.

- 1811/5 AT 2.5m/s
- 0.072m² FREE AREA REQUIRED.
- 500mmx300mm LOUVER REQUIRED AT 50% FREE AREA.
- INTAKE LOUVER : 3187/H/G/SI/003

TOP TO BOTTOM

BASEMENT MVHR EXHAUST AIR DUCT F/B RISE TO H/L
BASEMENT PLANT ROOM AIR EXHAUST DUCT F/B RISE TO H/L
BASEMENT PLANT ROOM AIR INTAKE DUCT DROP FROM HL T/B



DELANCEY STREET

| | | |
|----|---|----------|
| C5 | REVISED CONTRACT ISSUE | 28.05.21 |
| C4 | CCF003 & CCF004 | 09.04.21 |
| C3 | REVISED FOR CONTRACT ISSUE | 23.12.20 |
| C2 | DRAWING REVISED TO SUIT THE ARCHITECTS LAYOUT | 20.11.20 |
| C1 | CONTRACT ISSUE | 31.07.20 |
| T3 | STAGE 4 COORDINATION WITH REVISED DRAINAGE | 01.04.20 |
| T2 | STAGE 4 TENDER ISSUE | 22.11.19 |
| T1 | STAGE 4 TENDER ISSUE | 25.10.19 |
| P1 | PRELIMINARY ISSUE | 28.08.19 |

Revision Description Date

Drawing Status

CONTRACT

PSH. www.pshconsulting.co.uk

London Office
4th Floor, Alto Tower,
30 Stamford Street,
London, SE1 9LQ
T: 0203 029 3840
E: info@pshconsulting.co.uk

Wokingham Office
6 Alexandra Court,
Wokingham
Berkshire, RG40 2SL
T: 0188 977 4747
E: info@pshconsulting.co.uk

Architect:
MORRIS + COMPANY

Client:
DEMAR HOLDINGS

Project:
115 - 119 CAMDEN HIGH STREET

Title:
GROUND MECHANICAL SERVICES DUCTWORK LAYOUT

| | | |
|-------------------|------------------|-------------------|
| Drawn: JTC | Chk/ Appd: MB | Date: 21.08.19 |
| Scale: 1:50@A0 | Rev: CS | |

Drawing Number:
3187-PSH-H-00-DR-M-7001

