

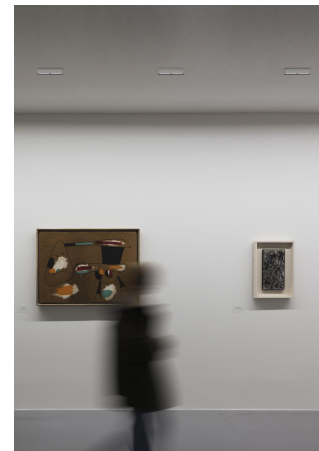
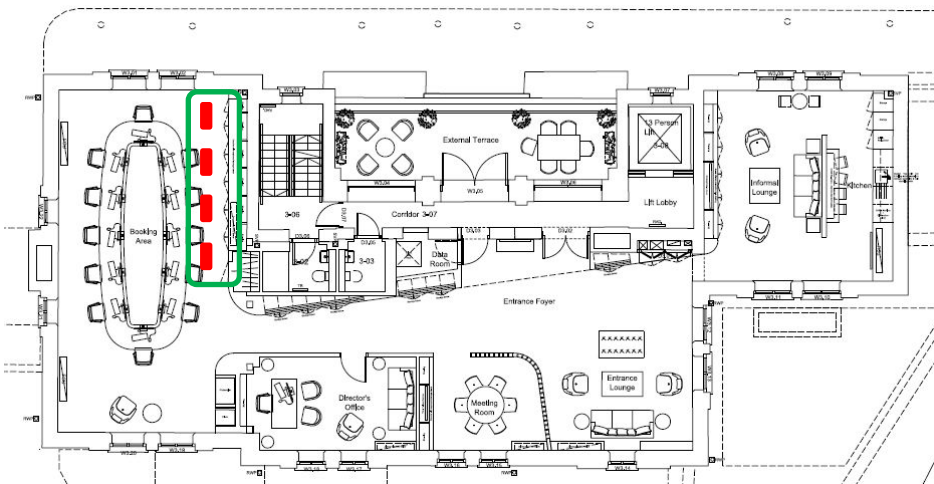
### Suitable Product



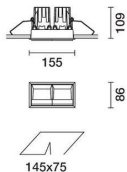
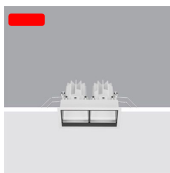
**Isola Aura** Round luminaire for ceiling-mounted installation with option of recessed or pendant installation. General Lighting Up/Down. Sizes:  $\varnothing 597 \times 89 \text{mm}$ ,  $\varnothing 887 \times 89 \text{mm}$ ,  $\varnothing 1157 \times 89 \text{mm}$ . 3000K, CRI 90, DALI dimmable. White finish TBC.

### Lighting Design Proposal

The Isola translates the concept of lightweight and elegance into light. A discrete aura emission creates a floating effect across the ceiling. Three extremely compact circular shapes with an elegant design can be dimmed via DALI to adjust the light levels as desired. Controlled luminance with a micro-prismatic diffuser screen ensures high luminous efficiency and perfect luminance control at  $UGR < 19$ , with dual emission (UP/DOWN). Different luminaire sizes can be installed throughout the Booking area to provide sufficient lighting for the office environment.



**Suitable Product**

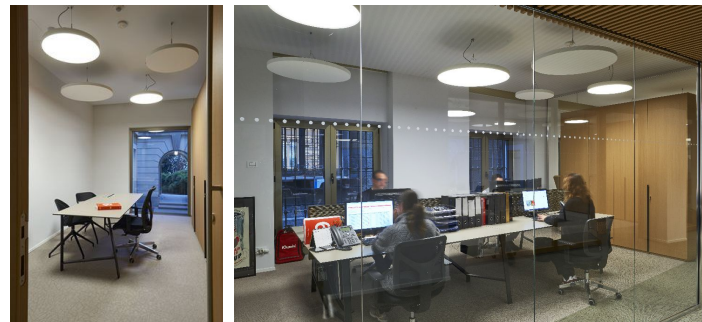
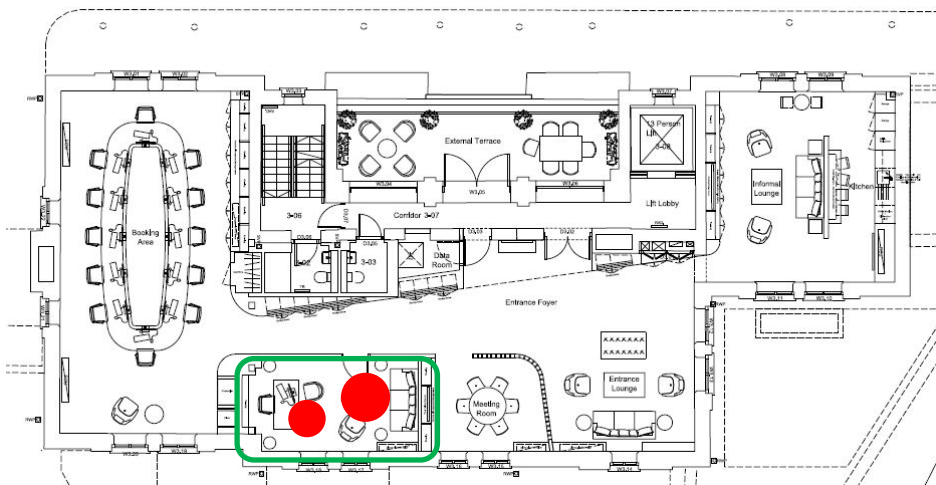


**Laser Blade L Frame 2-compartment recessed luminaire**  
with Wall Washer optic.

3000K, CRI 90, DALI dimmable, White/ white finish TBC

**Lighting Design Proposal**

High-Definition optical system designed to achieve effective wall wash distribution onto the wall. The wall washer optic ensures uniform lighting, from the highest to the lowest points, as well as avoiding shadow areas in zones near the ceiling.



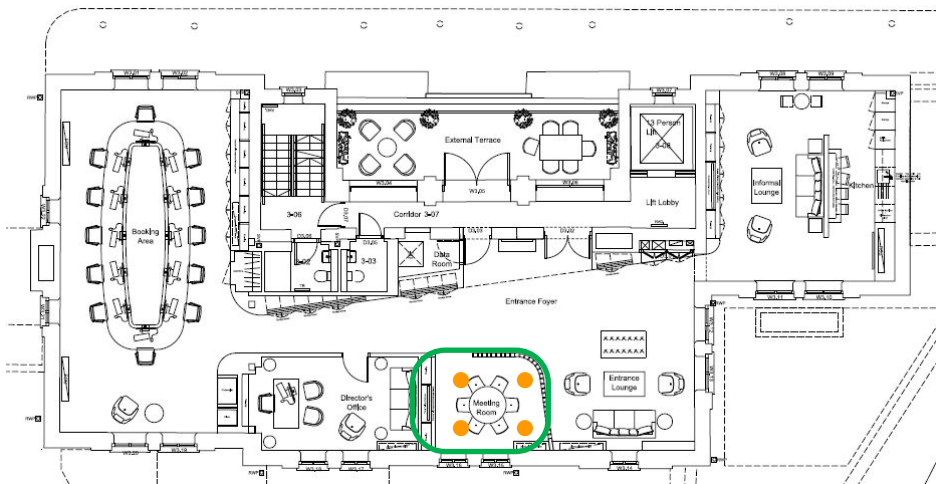
### Suitable Product



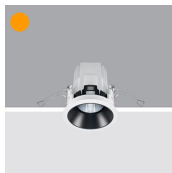
**Isola Aura** Round luminaire for ceiling-mounted installation with option of recessed or pendant installation. General Lighting Up/Down. Sizes:  $\varnothing 597 \times 89 \text{mm}$ ,  $\varnothing 887 \times 89 \text{mm}$ ,  $\varnothing 1157 \times 89 \text{mm}$ . 3000K, CRI 90, DALI dimmable. White finish TBC.

### Lighting Design Proposal

The Isola translates the concept of lightweight and elegance into light. A discrete aura emission creates a floating effect across the ceiling. Three extremely compact circular shapes with an elegant design can be dimmed via DALI to adjust the light levels as desired. Controlled luminance with a micro-prismatic diffuser screen ensures high luminous efficiency and perfect luminance control at  $\text{UGR} < 19$ , with dual emission (UP/DOWN). Different luminaire sizes can be installed throughout the Booking area to provide sufficient lighting for the office environment.



**Suitable Product**

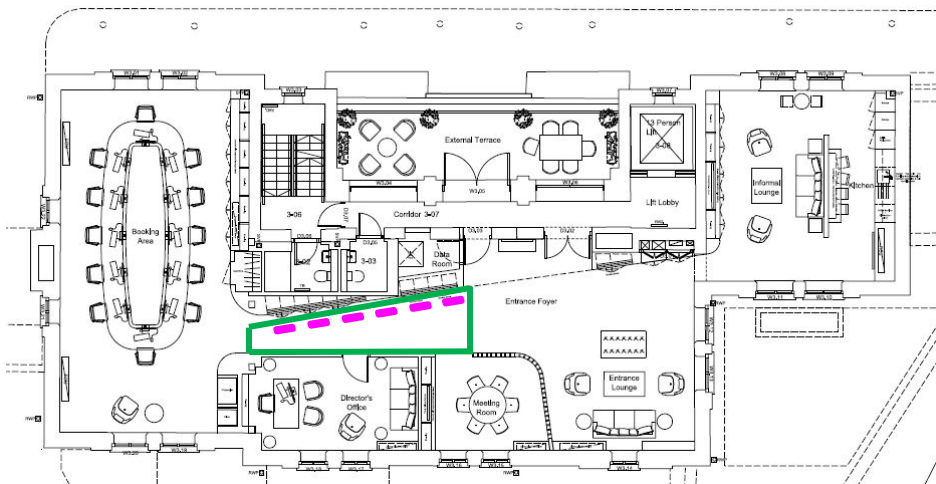


Laser Round fixed recessed luminaire.

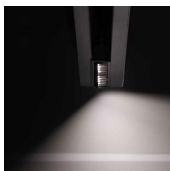
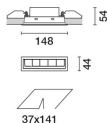
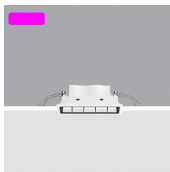
Wide Flood optic 56°. 3000K, CRI 90, DALI.

**Lighting Design Proposal**

Recessed Fixed Super Comfort Laser: the LEDs are set a long way back to minimize glare and guarantee a high level of visual comfort providing comfortable lighting in the meeting room.



### Suitable Products

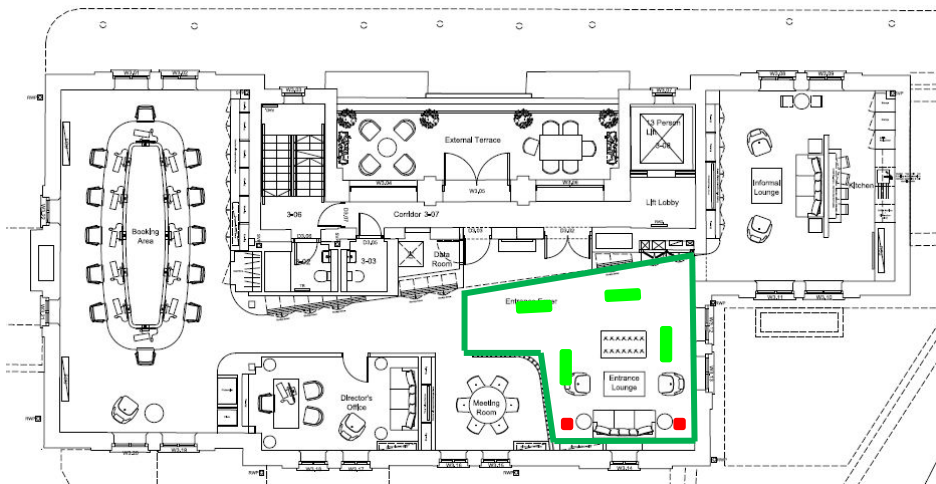


**Laser Blade** Wall Washer Longitudinal Glare Control. Miniaturized recessed linear luminaire. 3000K, CRI 95, DALI dimmable.

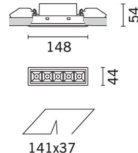
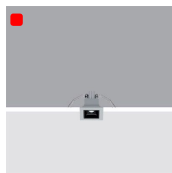
White / Black finish TBC.

### Lighting Design Proposal

Asymmetrical optic system designed to achieve effective light distribution onto the wall where the model photographs are displayed and avoid any shadow zones near the ceiling. The black polycarbonate perimeter frame is designed to significantly reduce the effect of longitudinal glare.



### Suitable Products



**Laser Blade** Square miniaturised recessed luminaire for single LED. Flood optic 32°. 3000K, CRI 90, DALI dimmable

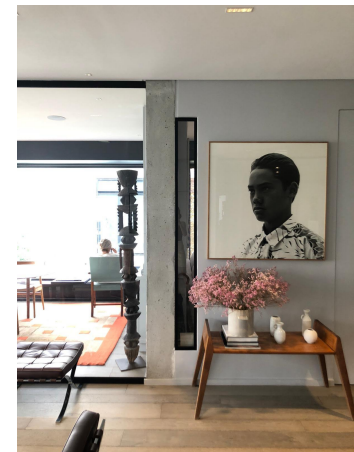
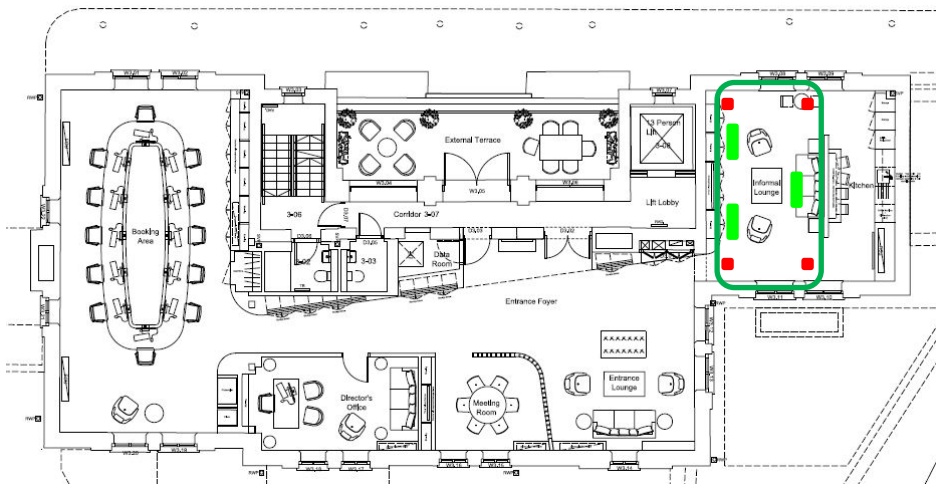
**Laser Blade** Rectangular miniaturised recessed luminaire with 5 optical elements. Wide Flood optic 48°. 3000K, CRI 95, DALI dimmable

### Lighting Design Proposal

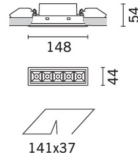
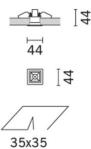
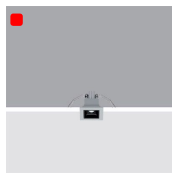
Square miniaturised recessed luminaire for single LED.

High visual comfort with precise circular distribution without punctiform effect.

Dramatic lighting effect without over illuminating the space, following the concept of the Paris offices.



Suitable Products



**Laser Blade** Square miniaturised recessed luminaire for single LED. Flood optic 32°. 3000K, CRI 90, DALI dimmable

**Laser Blade** Rectangular miniaturised recessed luminaire with 5 optical elements. Wide Flood optic 48°. 3000K, CRI 95, DALI dimmable

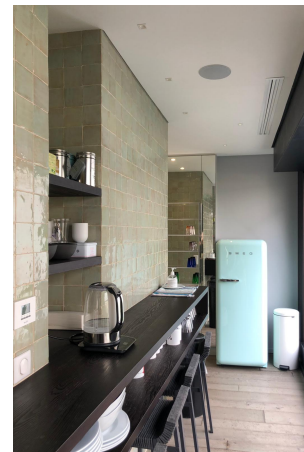
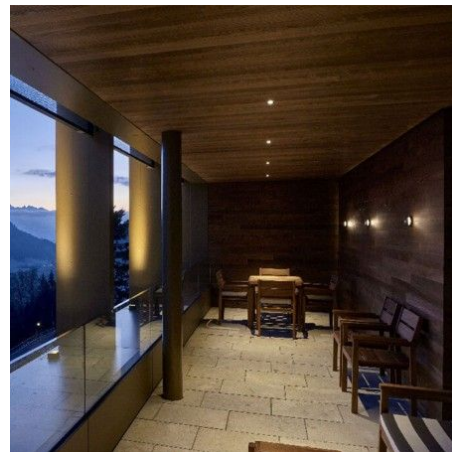
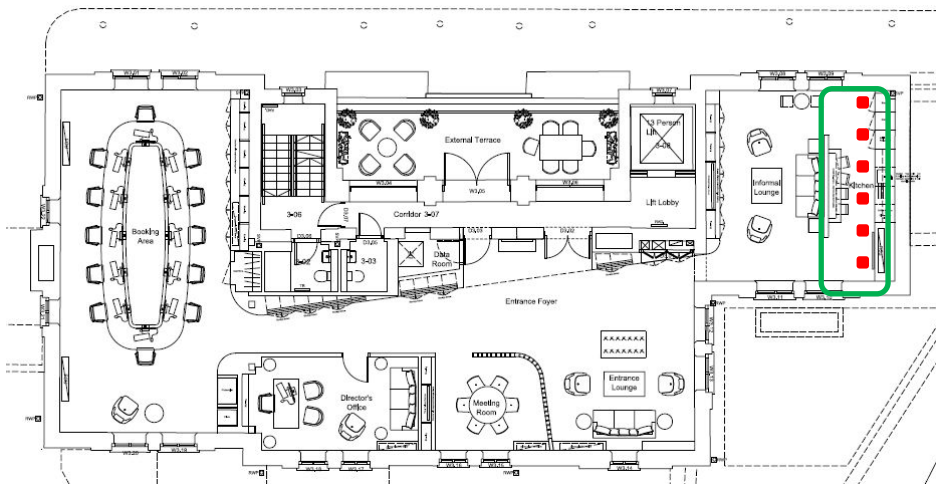
Lighting Design Proposal

Square miniaturised recessed luminaire for single LED.

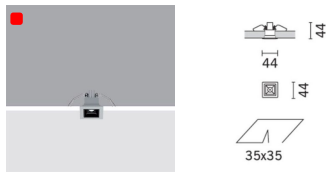
High visual comfort with precise circular distribution without punctiform effect.

Dramatic lighting effect without over illuminating the space, following the concept of the Paris offices.





Suitable Product



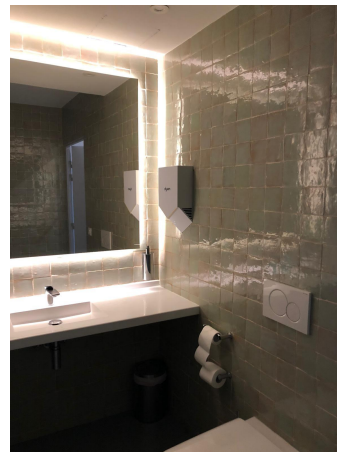
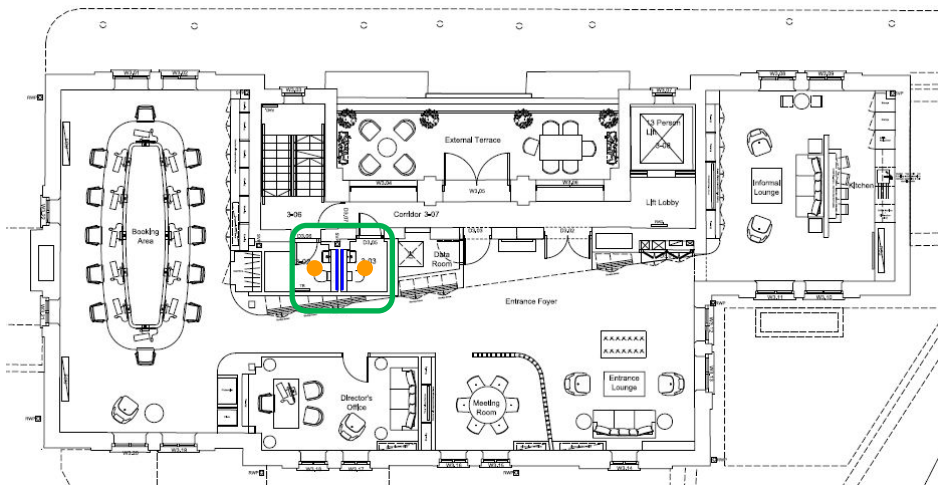
Lighting Design Proposal

Square miniaturised recessed luminaire for single LED.

Laser Blade Fixed recessed luminaire.

Flood optic 32°.

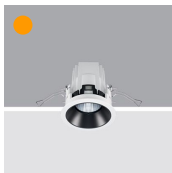
3000K, CRI 90, DALI dimmable



### Suitable Products



**Underscore 15** Linear lighting product  
3000K, CRI 80, DALI dimmable

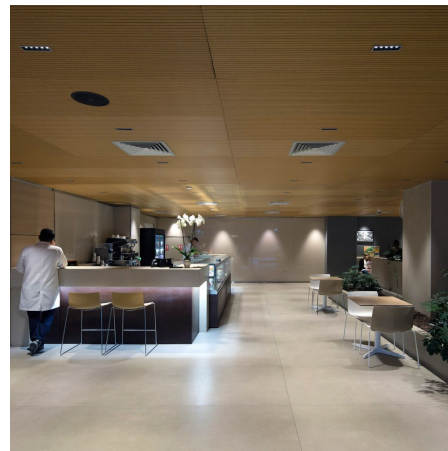
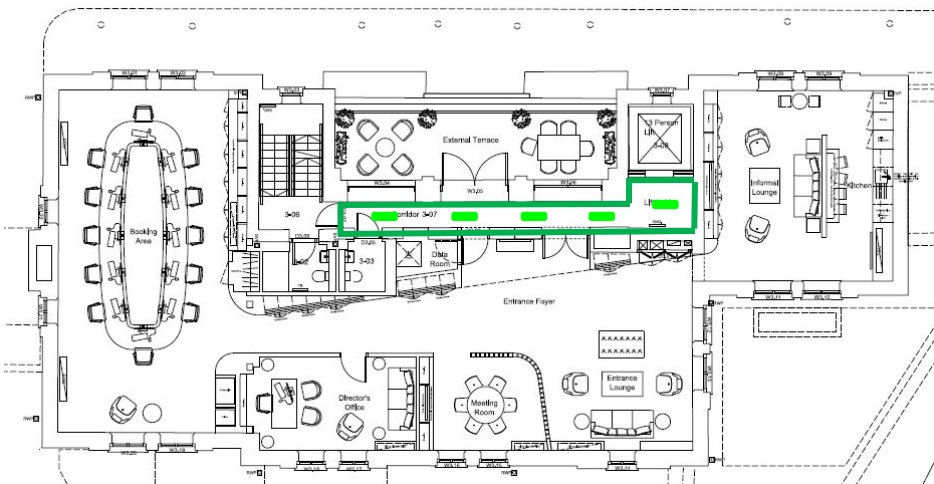


**Laser** Round fixed recessed luminaire.  
Wide Flood optic 56°. 3000K, CRI 90, DALI.  
White/white finish TBC.

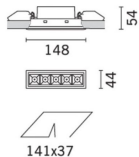
### Lighting Design Proposal

High output LEDstrip creating a glow/halo lighting effect behind the mirror.

Recessed Fixed Super Comfort Laser: the LEDs are set a long way back to minimize glare and guarantee a high level of visual comfort.



Suitable Product

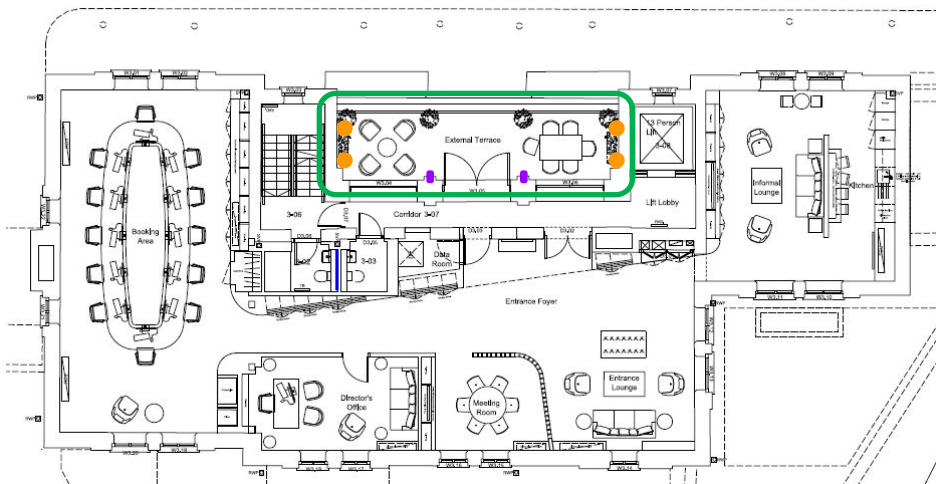


**Laser Blade** Rectangular miniaturised recessed luminaire with 5 optical elements. Wide Flood optic 48°. 3000K, CRI 90, DALI dimmable. White/ white finish TBC.

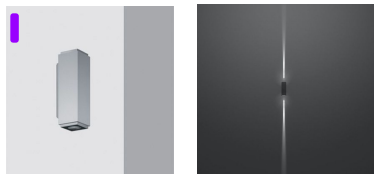
Lighting Design Proposal

Corridor/ Lift lobby lighting to be confirmed.

High visual comfort with precise circular distribution without punctiform effect.

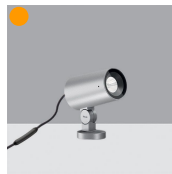


### Suitable Product



iPro Wall mounted luminaire.

Flood optic 32°. 3000K, CRI 80, On/Off



Palco In Out Spotlight for outdoor installation on spike for ground/garden application. 3000K CRI 80 medium optic 26°, On/Off.



### Lighting Design Proposal

**Wall mounted luminaires:** Subtle lines to provide some decorative lighting on the external terrace columns and walls using wall mounted luminaires with Up and Down light emission. Option for wide flood or spot optic or a combination of both optics for the uplighting and downlighting element.

**Outdoor projectors with spike** within planters to provide some additional light allowing the luminaires to be aimed to the side walls.