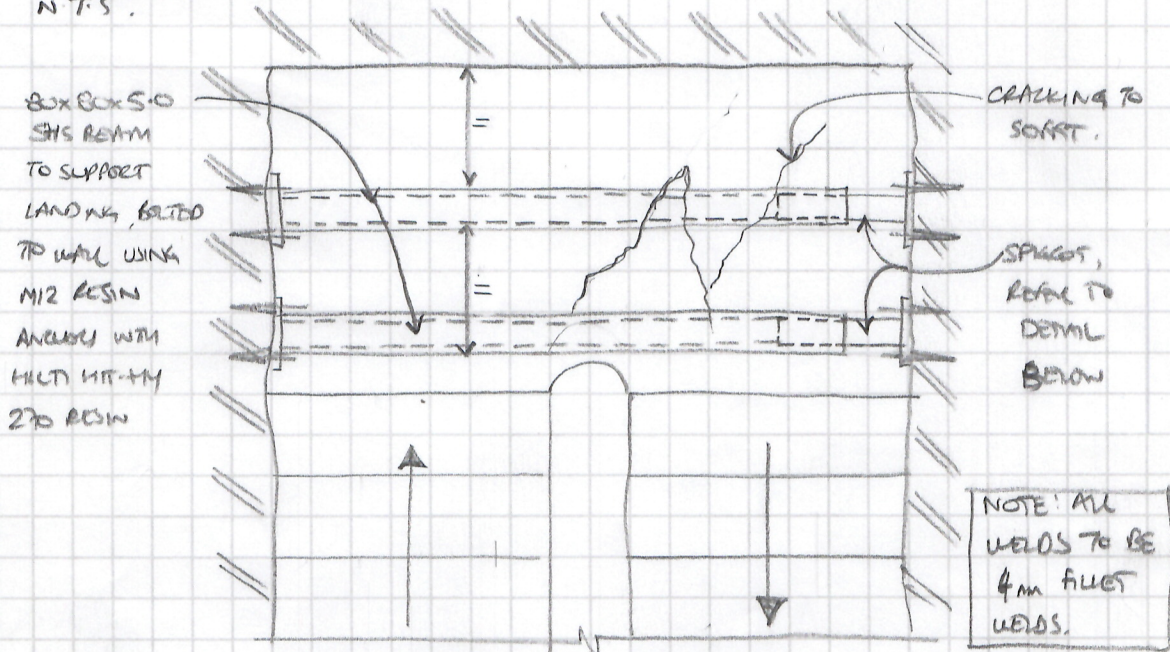


Project RUSSELL SQUARE, LONDON				Job Ref 222177	
Section CENTRAL STAIR LANDINGS REPAIR				Sheet no SK/01	
Calc By	Date	Checked by	Date	Revision	Date
JL	04/22				

PLAN VIEW ON HALF LANDINGS.

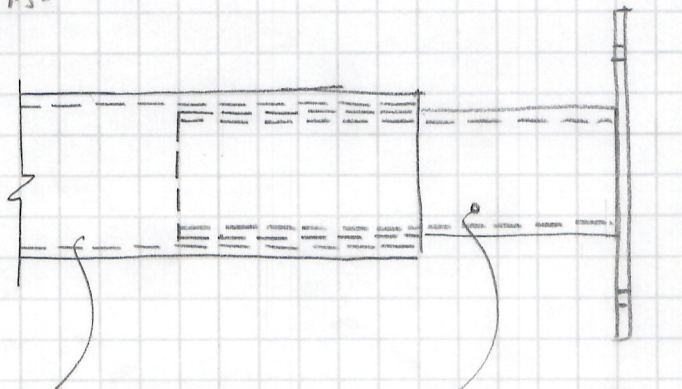
N.T.S.



NOTE: SPIGOTS TO BE LOOSE FITTED TO ALLOW BEAM TO BE IN SITUED WITHOUT NEED FOR SPICE OR RELIEF IN SIDE WALL.

SPIGOT DETAIL

N.T.S.

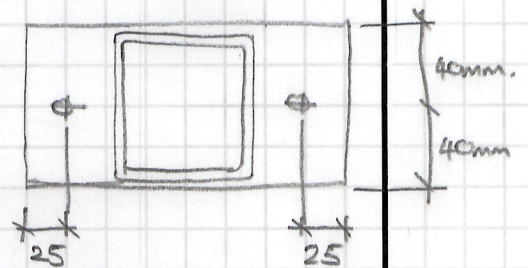


MAIN 80x80x5.0 SHS

70x70x5.0 SHS SPIGOT, LOOSE FITTED INTO BEAM & WELDED IN PLACE ON SITE.

ENDPLATE DETAIL

N.T.S.



14mm ϕ HOLE FOR M12 BOLT.

PLATE TO BE 130mm WIDE X 80mm DP X 5mm THICK.