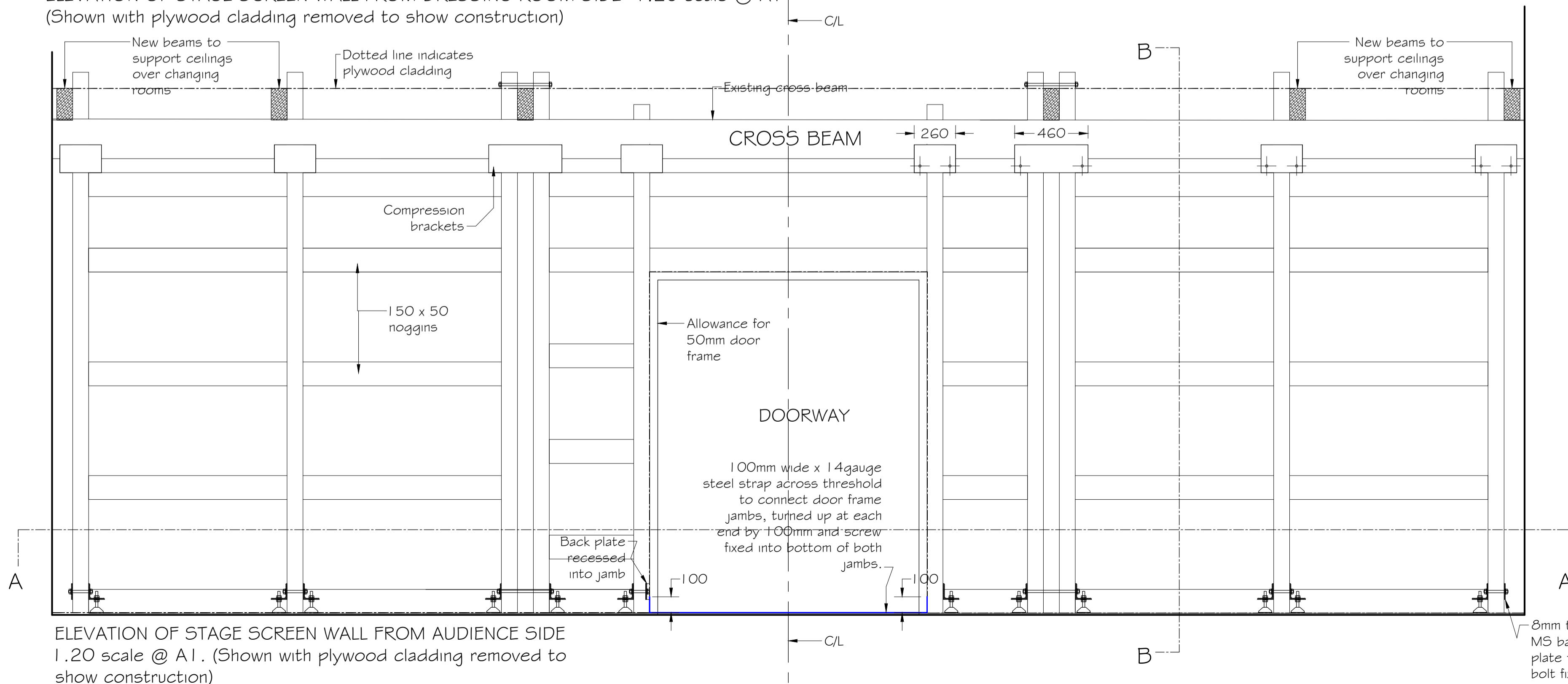
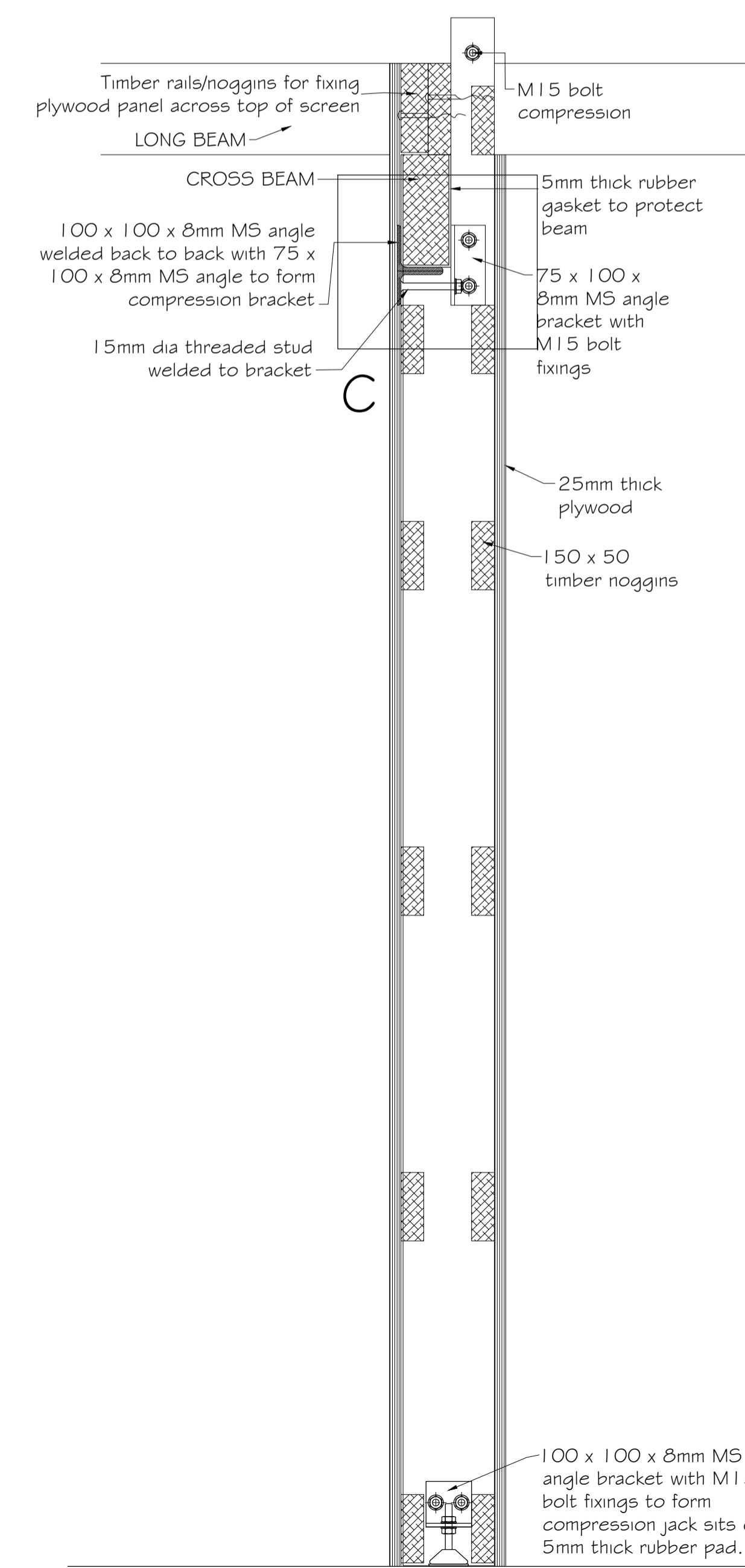
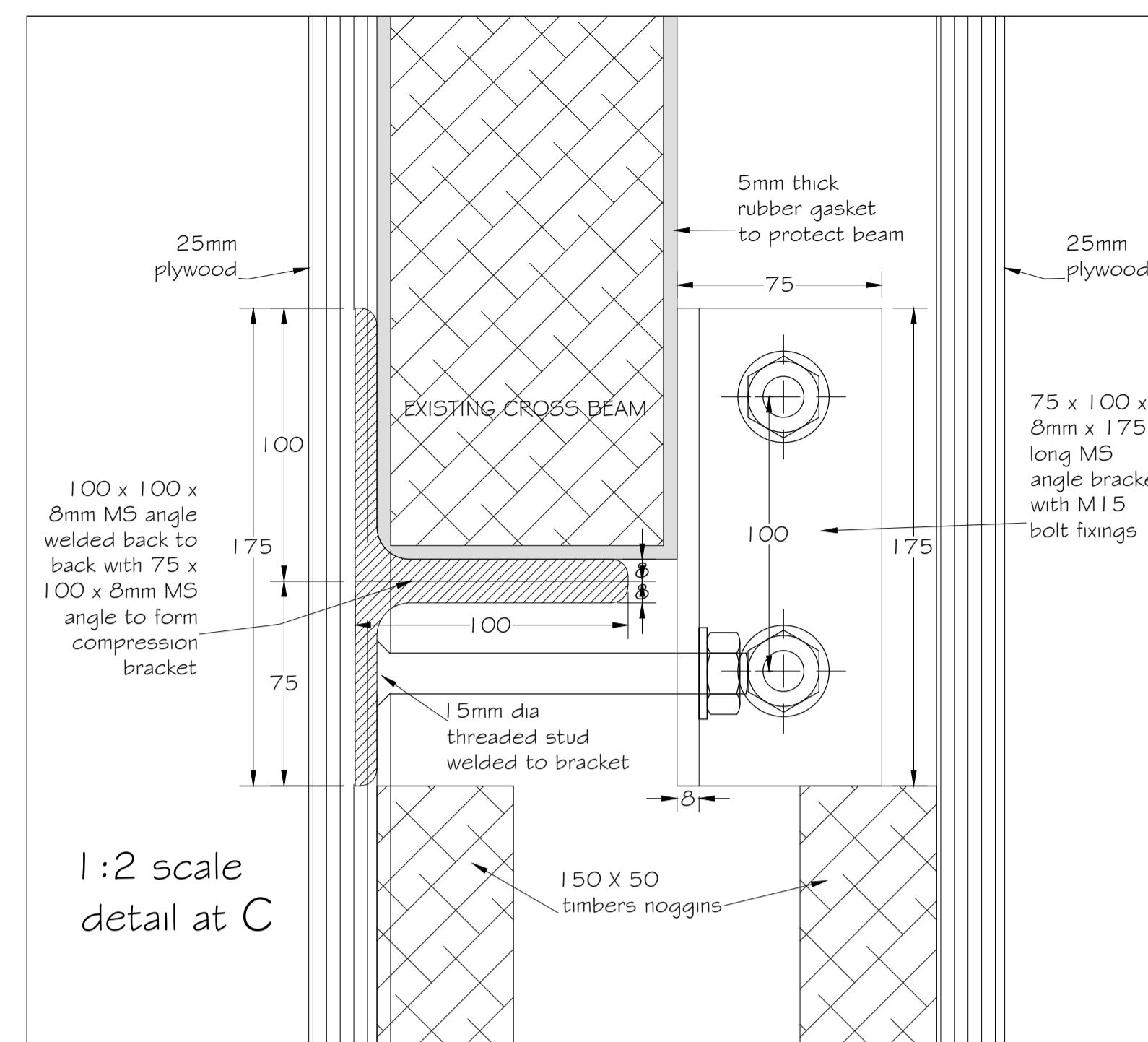


ELEVATION OF STAGE SCREEN WALL FROM DRESSING ROOM SIDE 1:20 scale @ A1
(Shown with plywood cladding removed to show construction)



ELEVATION OF STAGE SCREEN WALL FROM AUDIENCE SIDE 1:20 scale @ A1.
(Shown with plywood cladding removed to show construction)



SECTION B-B THROUGH SCREEN WALL 1:10 scale @ A1

DO NOT SCALE THIS DRAWING
ALL DIMENSIONS MUST BE CHECKED ON
SITE BEFORE WORK COMMENCES

PRELIMINARY

No.	By	Revision	Date
A	PB	1:2 scale section through head of screen added at C. Steel Door threshold strip tying door jambs added. 5mm rubber pads added to floor jacking points. M15 threads increased in length. Bracket/bolt connection indicated on elevations.	17 Apr 22

Job Title
Camden

Drawing Title
STAGE SCREEN WALL DETAILS

Scale	Drawing No.	Rev.
1:20 @ A1 1:10 @ A1	22-714-07	A
Drawn by Peter Bishop	Date 15 Apr 22	Refer to Drawing No.

