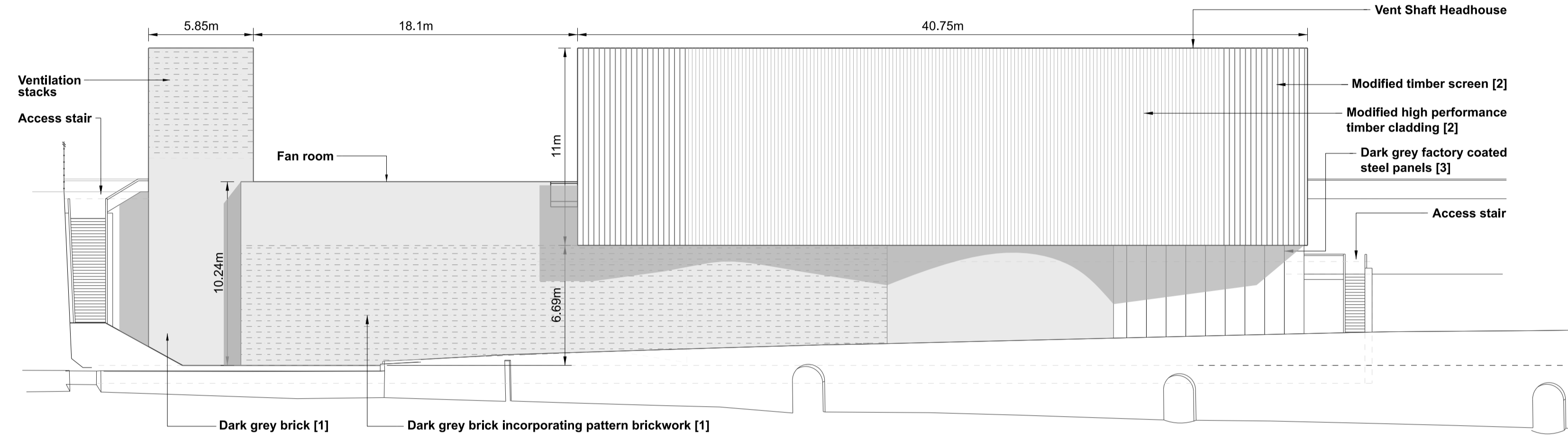
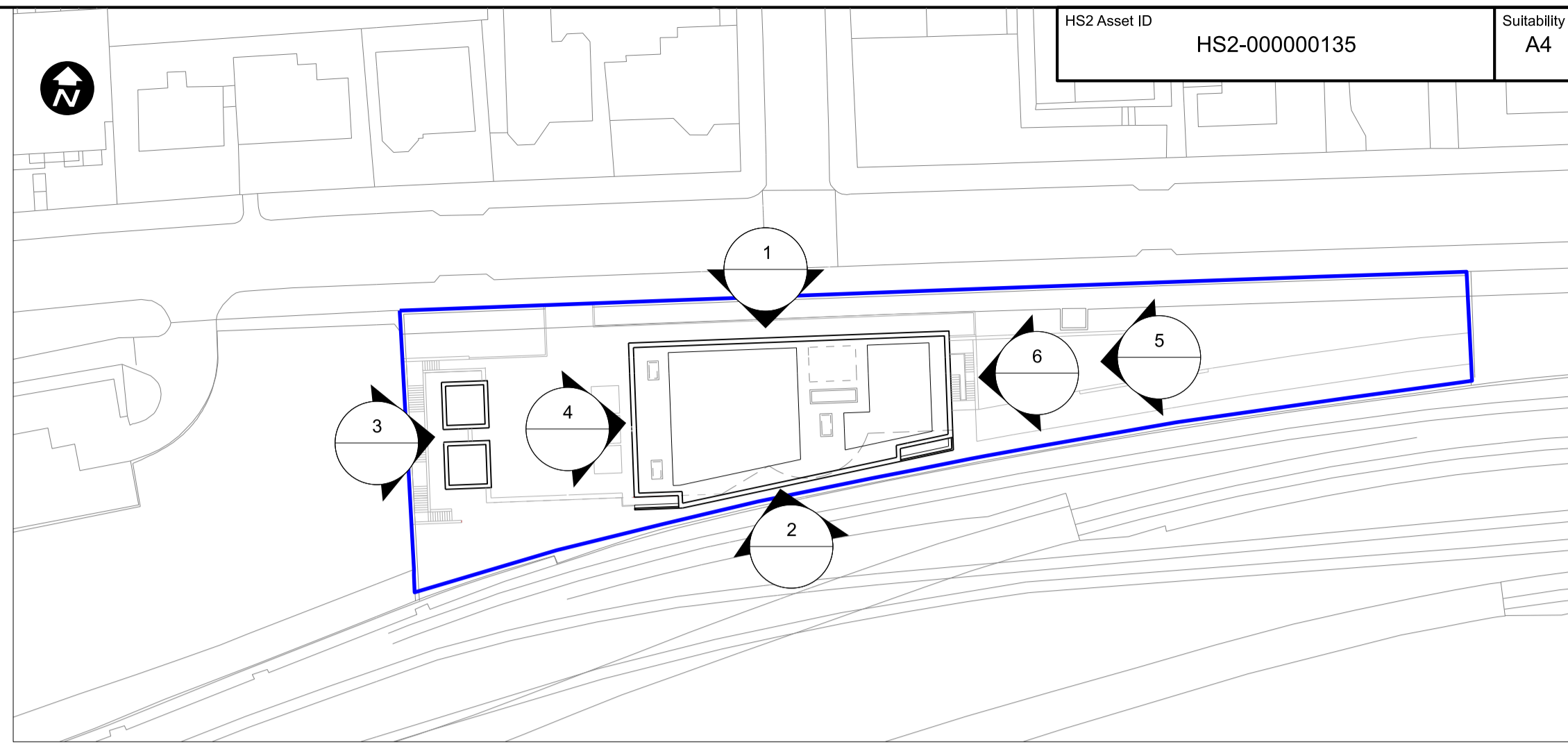
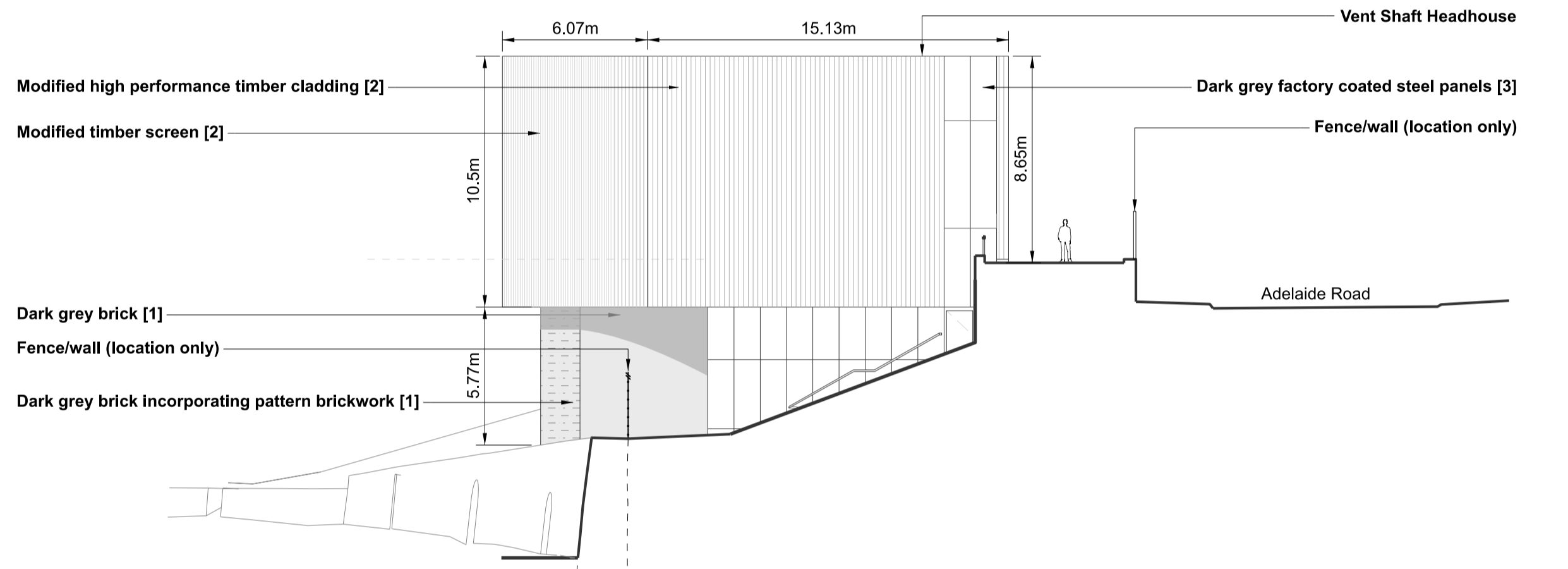


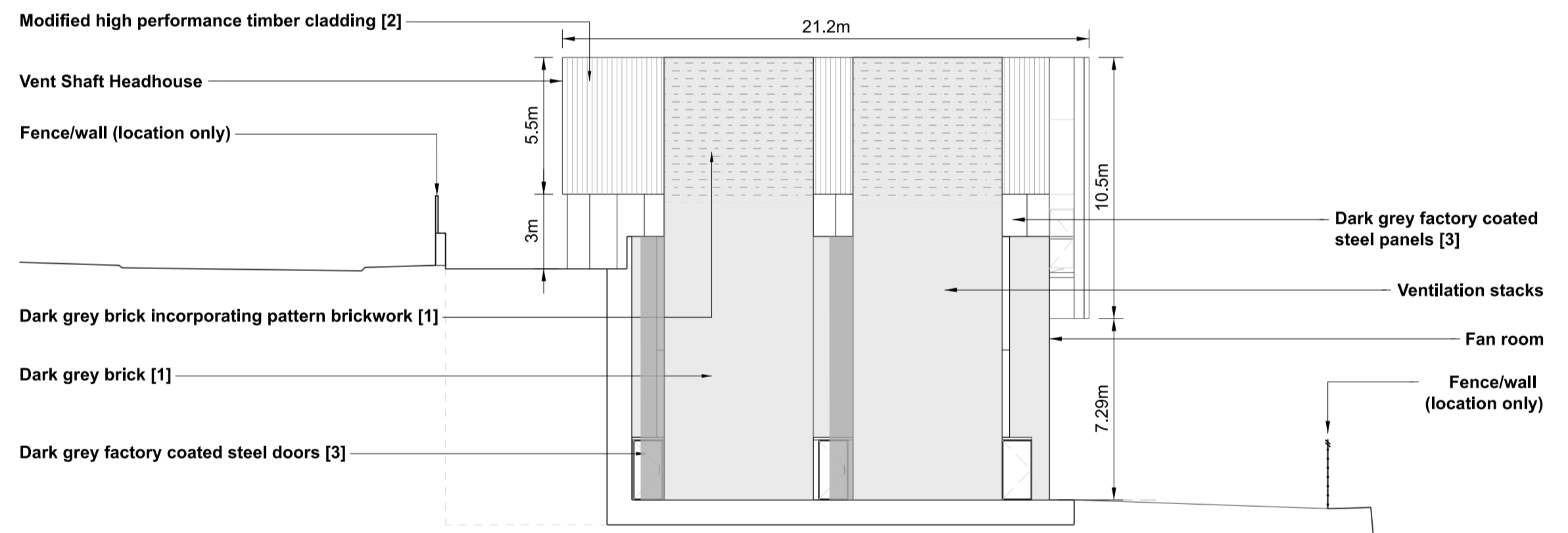
1 North Elevation
443031 1:200



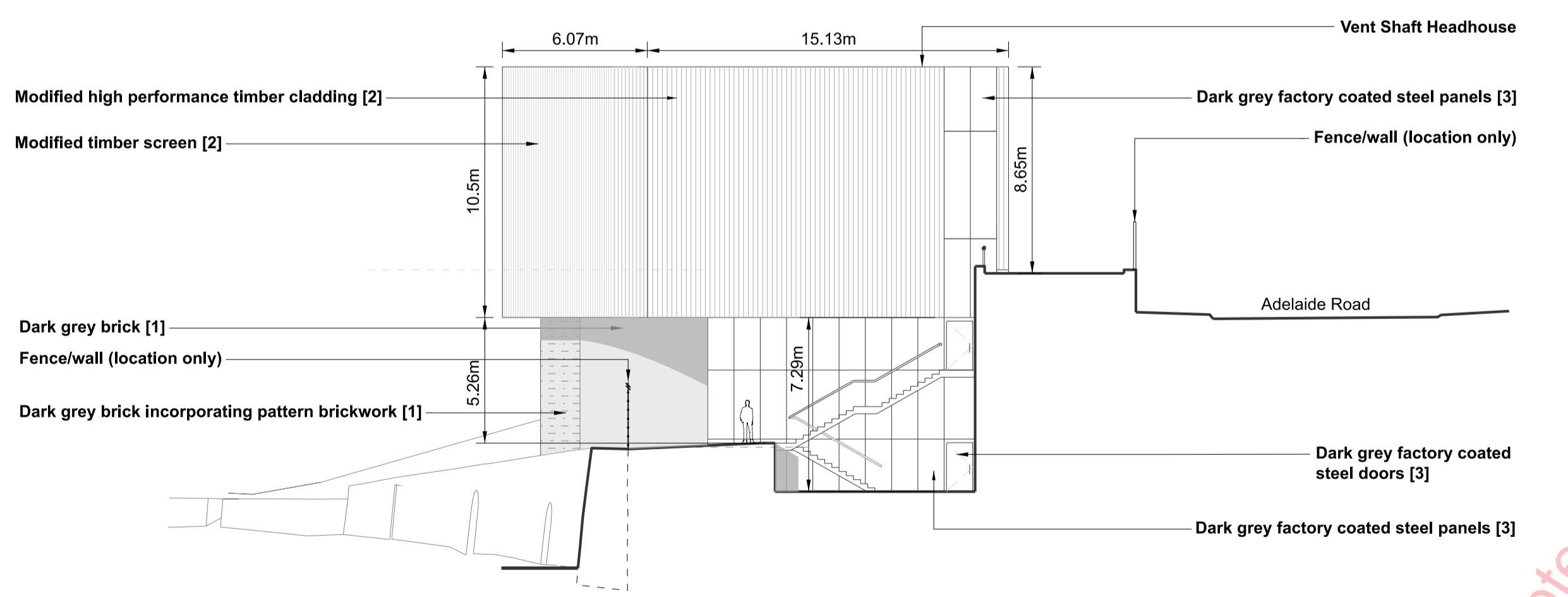
2 South Elevation
443031 1:200



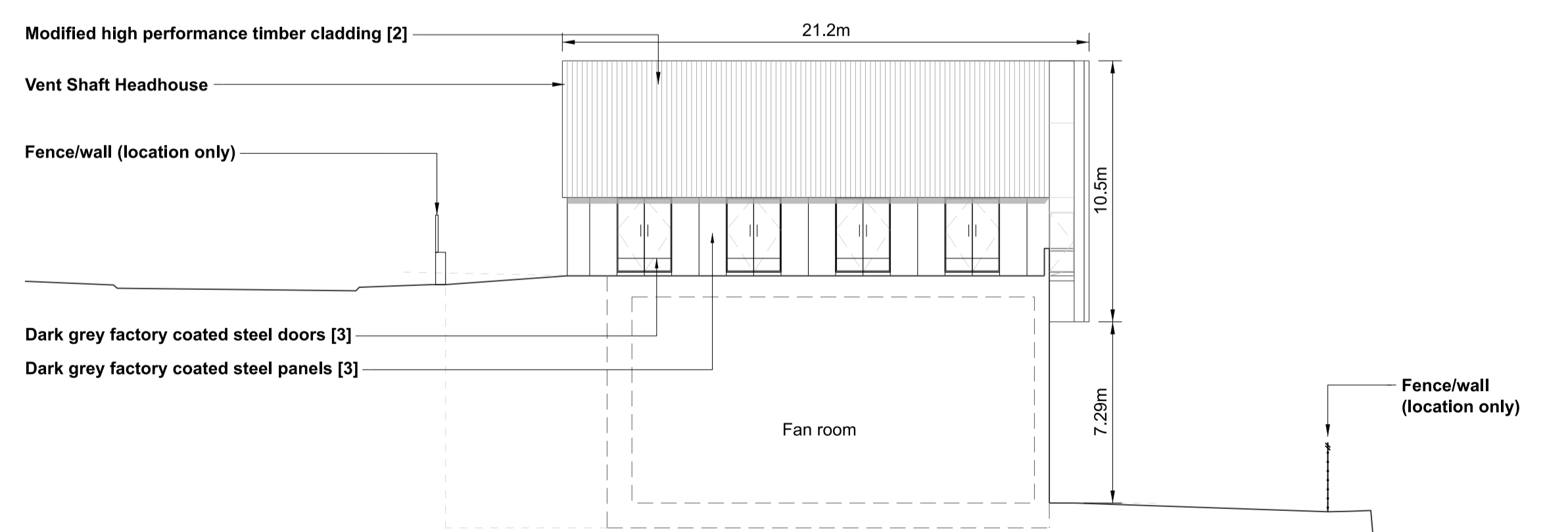
5 East Elevation
443031 1:200



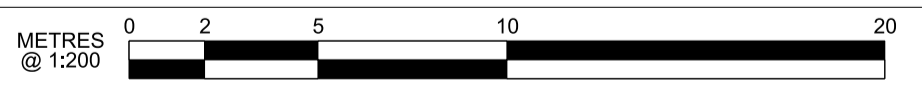
3 West Elevation
443031 1:200



6 East Elevation
443031 1:200



4 West Elevation
443031 1:200



ISSUED FOR ACCEPTANCE

Rev	Description	Drawn	Checked	Con App	HS2 App	Scale with caution as distortion can occur.
P01	EAR-CW_Schedule 17 Submission	SS	VD			HS2 accepts no responsibility for any circumstances which arise from the reproduction of this document after alteration, amendment or abbreviation or if it is issued in part or issued incompletely in any way.
P02	EAR-CW_Schedule 17 LA Submission	SS	VD			© Crown Copyright and database right 2018. All rights reserved. Ordnance Survey Licence number 100049190
P03	EAR-CW_Schedule 17 Final Submission	SS	VD			© Crown Copyright material is reproduced with the permission of Land Registry under delegated authority from the Controller of HMSO.
P04	EAR-CW_Schedule 17 Final Re-Sub A	SS	VD			This material was last updated on 2018 and may not be copied, distributed, sold or published without the formal permission of Land Registry. Only an official copy of a title plan or register obtained from the Land Registry may be used for legal or other official purposes.
C01	EAR-CW_Schedule 17 Final Re-Sub A	SS	VD	GR		

Legends/Notes:

G1. All dimensions are in meters unless noted otherwise.
 G2. All levels are in meters relative to OD (Ordnance Datum, Newlyn) unless noted otherwise.
 G3. Global coordinates are indicated by Eastings (E) and Northings (N) to the project snake grid.
 G4. All angles are in degrees (0° 360°) unless noted otherwise.
 G5. Dimensions are not to be scaled from the drawing.
 G6. Dimensions and levels are approximate and subject to Detail Design.
 G7. Landscaped areas subject to future Schedule 17 approvals.
 G8. Only the location for boundary walls and fencing is for approval. The design of these structures are not for approval.
 G9. For Material Details see plan 1MC03-SCJ_SDH-AR-DPH-SS02_SL01-440091, for specific material reference please see numbers in brackets.

G10. Drawings referred to in the plan are for information only.
 G11. The details provided in grey are for information only - not for approval

HS2
 Registered in England Registration No. 06791686
 Registered office: 2 Snow Hill, Queensway, Birmingham, B4 6GA
OFFICIAL
 Creator/Originator
 SCS JV - Design House

Zone	Adelaide Road Vent Shaft		Project/Contract	HS2-MWCC SCS Sector S1	
Design Stage	Detailed Design		Discipline/Function	Architectural	
Drawing Title	Adelaide Road Vent Shaft Schedule 17 Plans and Specifications Elevations For Acceptance		Drawn	Checked	Approved
	S.Sevilla	V.De Siqueira	C.Gomez		
Date	04/04/22	Scale	1:200	Size	A1
Drawing No.	1MC03-SCJ_SDH-AR-DEL-SS02_SL01-443031		Rev.	C01	