



**2. TIMBER**  
Accoya or similar modified softwood naturally weathered to silver grey colour



**1. BRICK**  
Engineering brick for walls, retaining walls and pavours in dark grey or similar



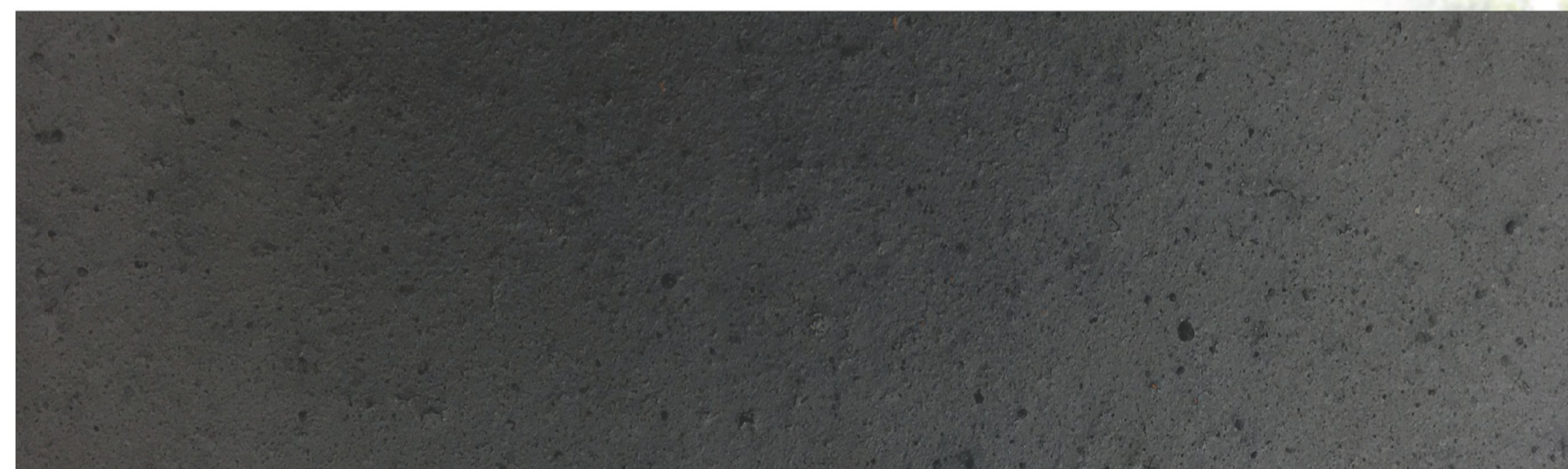
**6. WATERPROOFING MEMBRANE**  
Single-ply PVC membrane on roof finish and parapets.



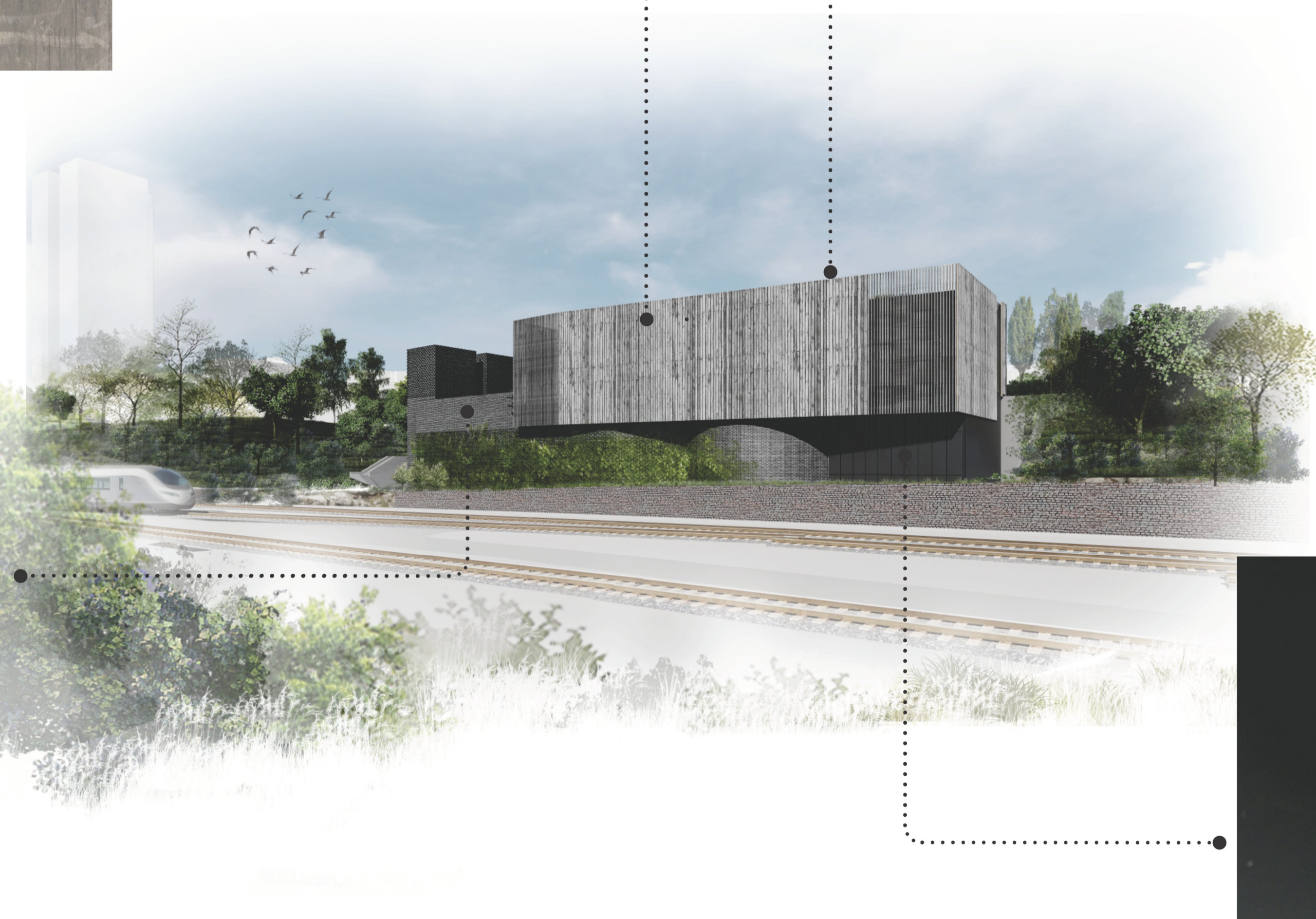
**5. GREEN ROOF**  
Intensive Green Roof with deep growing substrate and biodiverse planting of grasses, herbaceous and shrub planting.



**4. STAINLESS STEEL**  
Kick plates, handles and special panels in brushed finish



**3. METAL**  
Dark grey metal panels and louvres



**ISSUED FOR ACCEPTANCE**

P01	EAR-CW_Schedule 17 Submission	SS	VD			HS2 accepts no responsibility for any circumstances which arise from the reproduction of this document after alteration, amendment or abbreviation or if it is issued in part or issued incompletely in any way.
P02	EAR-CW_Schedule 17 LA Submission	SS	VD			© Crown Copyright and database right 2018. All rights reserved. Ordnance Survey Licence number 100049190
P03	EAR-CW_Schedule 17 Final Submission	SS	VD			© Crown Copyright material is reproduced with the permission of Land Registry under delegated authority from the Controller of HMSO.
P04	EAR-CW_Schedule 17 Final Re-Sub A	SS	VD			This material was last updated on 2018 and may not be copied, distributed, sold or published without the formal permission of Land Registry. Only an official copy of a title plan or register obtained from the Land Registry may be used for legal or other official purposes.
C01	EAR-CW_Schedule 17 Final Re-Sub A	SS	VD	GR		
Rev	Description	Drawn	Checked	Con App	HS2 App	Scale with caution as distortion can occur.

**Legends/Notes:**

G1. All dimensions are in millimeters unless noted otherwise.  
 G2. All levels are in metres relative to OD (Ordnance Datum, Newlyn) unless noted otherwise.  
 G3. Global coordinates are indicated by Eastings (E) and Northings (N) to the project snake grid.  
 G4. All angles are in degrees (0° 360°) unless noted otherwise.  
 G5. Dimensions are not to be scaled from the drawing.  
 G6. Dimensions and levels are approximate and subject to Detail Design.  
 G7. Landscaped areas subject to future Schedule 17 approvals.  
 G8. Only the location for boundary walls and fencing is for approval. The design of these structures are not for approval.

**HS2**  
 Registered in England Registration No. 06791686  
 Registered office: 2 Snow Hill, Queensway, Birmingham, B4 6GA  
**OFFICIAL**  
 Creator/Originator: SCS JV - Design House

Zone	Adelaide Road Vent Shaft		
Project/Contract	HS2-MWCC SCS Sector S1		
Design Stage	Detailed Design		
Discipline/Function	Architectural		
Drawing Title	Adelaide Road Vent Shaft Schedule 17 Plans and Specifications Material Board For Acceptance		
Drawn	S.Sevilla	Checked	V.De Siqueira
Date	04/04/22	Scale	N/A
Approved	C.Gomez		Size
Size	A1		Rev.
Drawing No.	1MC03-SCJ_SDH-AR-DPH-SS02_SL01-449091		C01

Zone	Adelaide Road Vent Shaft		
Project/Contract	HS2-MWCC SCS Sector S1		
Design Stage	Detailed Design		
Discipline/Function	Architectural		
Drawing Title	Adelaide Road Vent Shaft Schedule 17 Plans and Specifications Material Board For Acceptance		
Drawn	S.Sevilla	Checked	V.De Siqueira
Date	04/04/22	Scale	N/A
Approved	C.Gomez		Size
Size	A1		Rev.
Drawing No.	1MC03-SCJ_SDH-AR-DPH-SS02_SL01-449091		C01