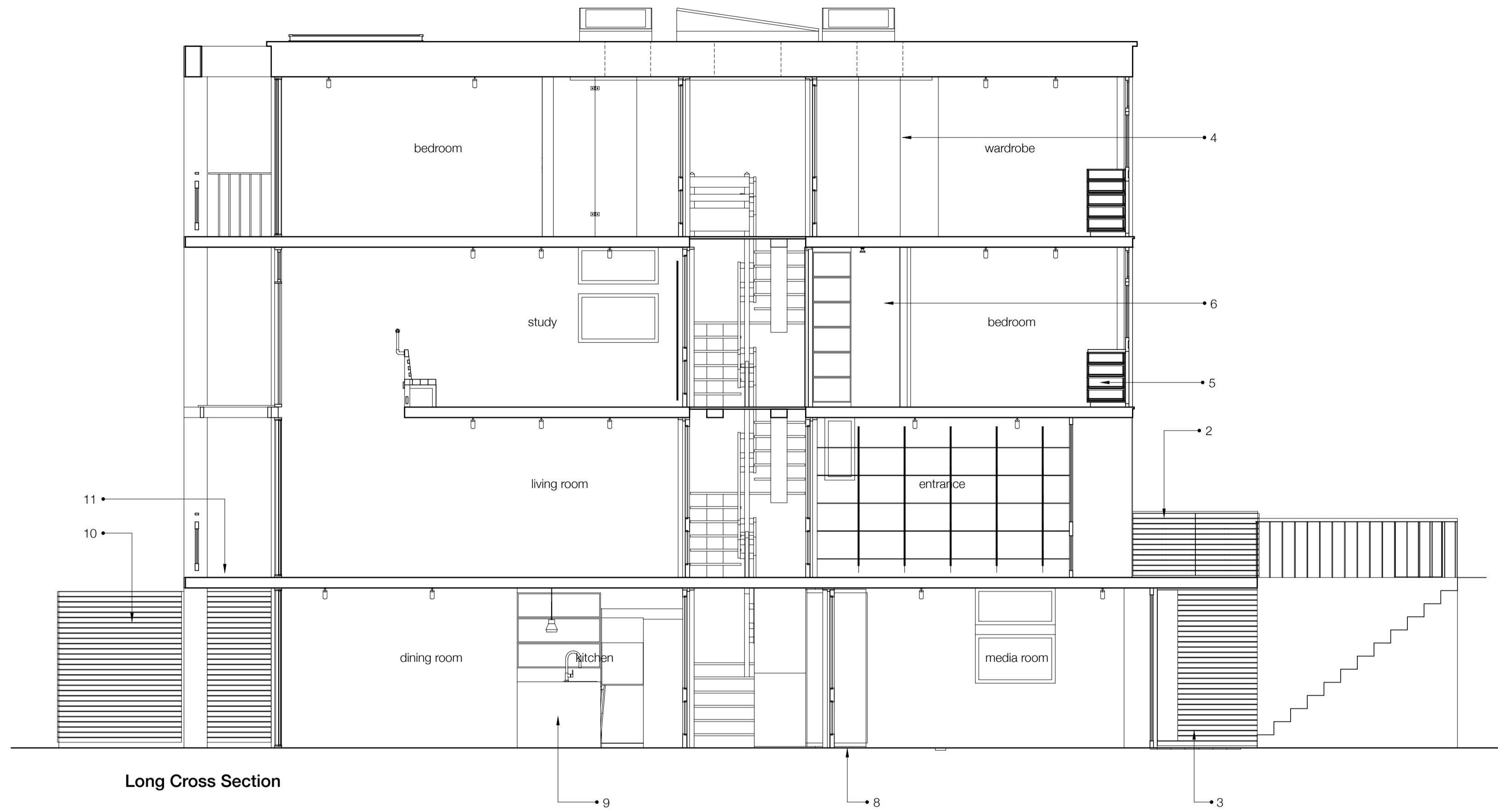


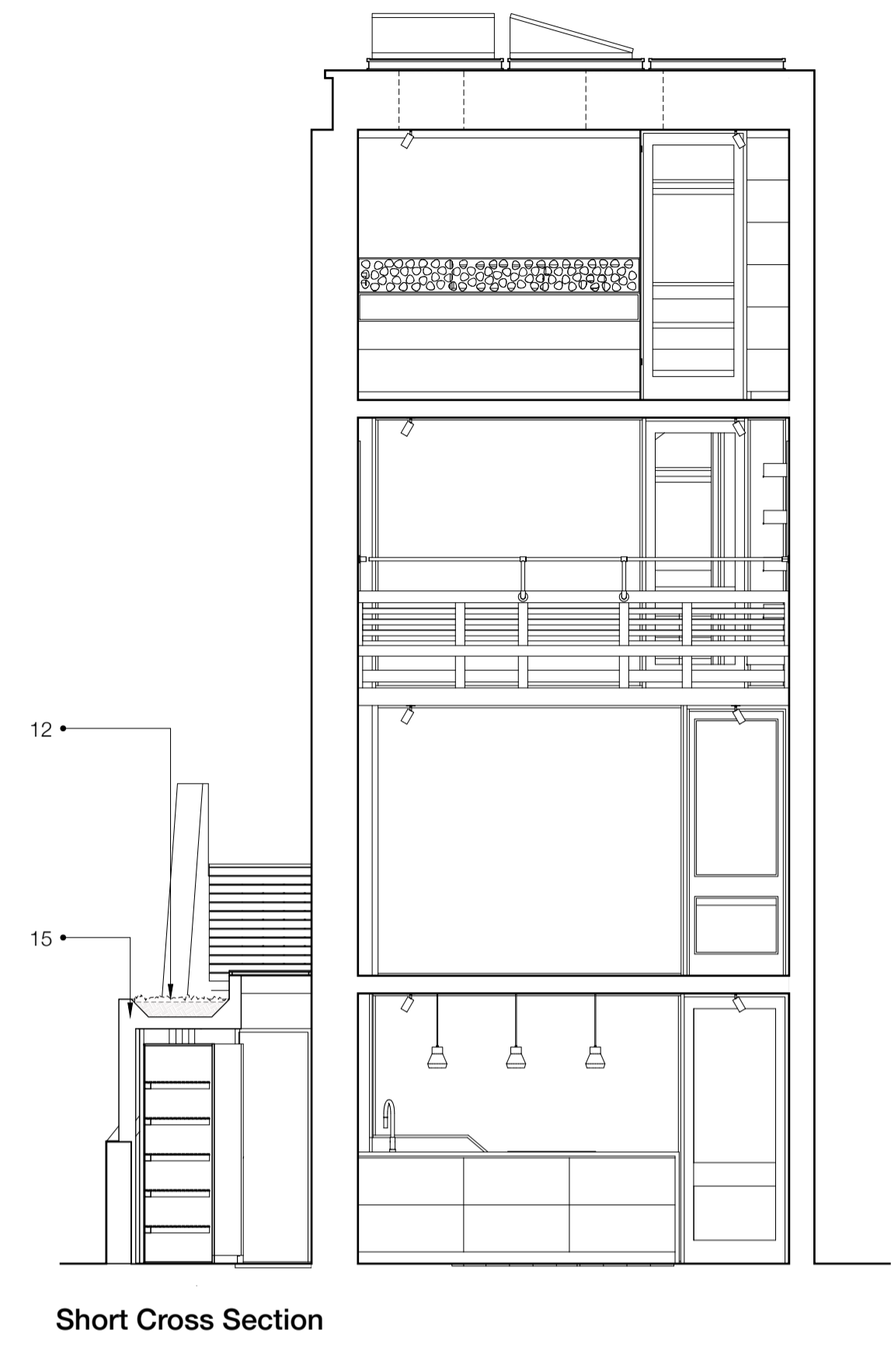
NOTES

© The drawing copyright Barnaby Gunning 2022  
Do not scale from this drawing.  
Dimensions to be verified on site prior to construction.  
Unless otherwise indicated, all dimensions are in millimetres.

- 1 velux integra centre pivot roof lights
- 2 bicycle store in hardwood frame with western red cedar cladding
- 3 external wall to shower room with western red cedar cladding
- 4 bathroom
- 5 window seat and drawers
- 6 shower room constructed in joinery
- 7 wall-mounted shelves
- 8 stud framed enclosure for central heating and hot water plant
- 9 kitchen joinery
- 10 garden shed with western red cedar cladding
- 11 existing balcony refurbished
- 12 sedum roof to side extension
- 13 fixed glazed panels with single motorised opening light for ventilation
- 14 replacement glazed front door in oak with fixed glazed side panel
- 15 insulated timber framed wall to side extension with western red cedar cladding
- 16 Aluminium framed double glazed sliding doors
- 17 Fixed single glazed panel with top hung opening panel

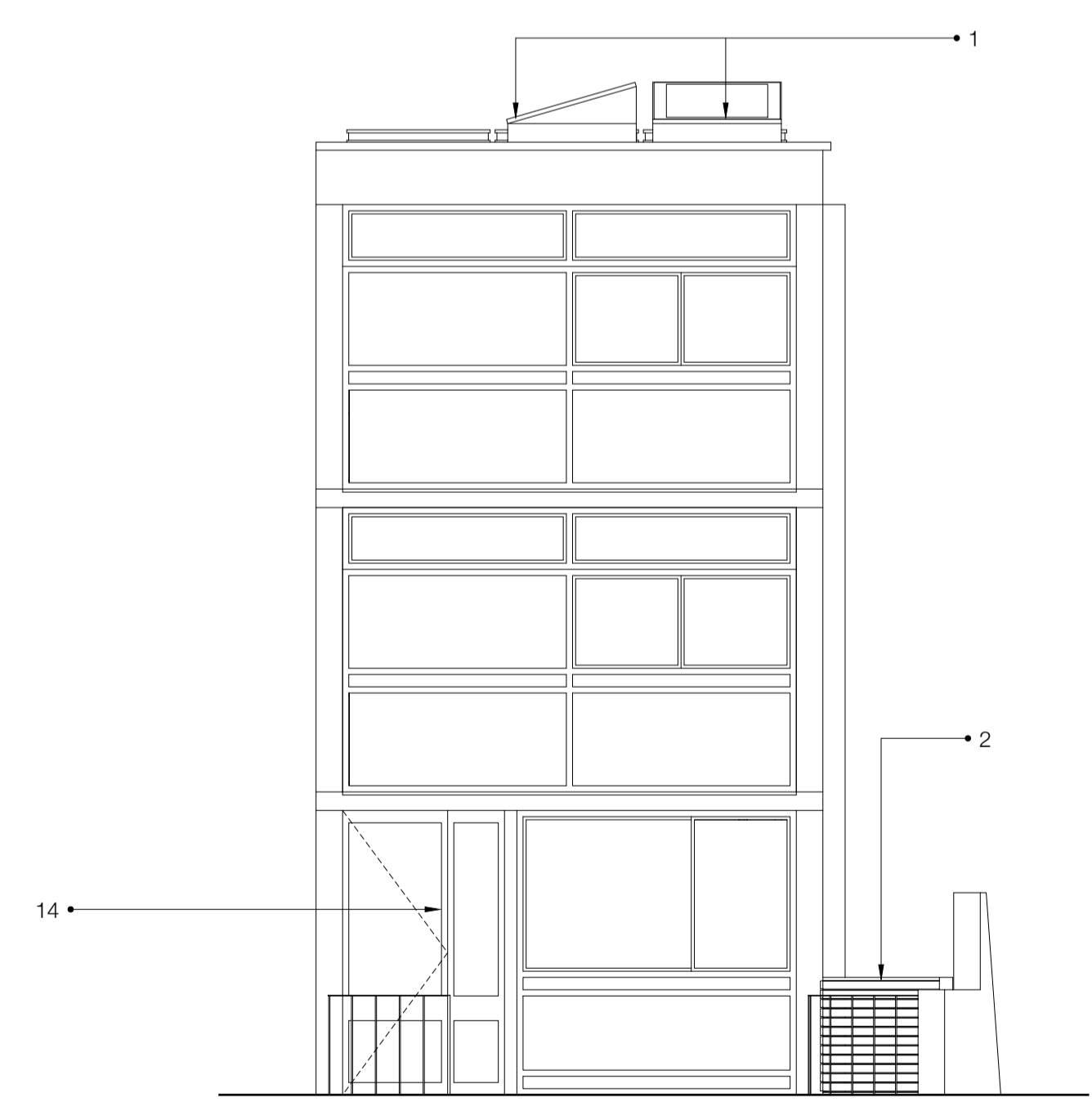


Long Cross Section

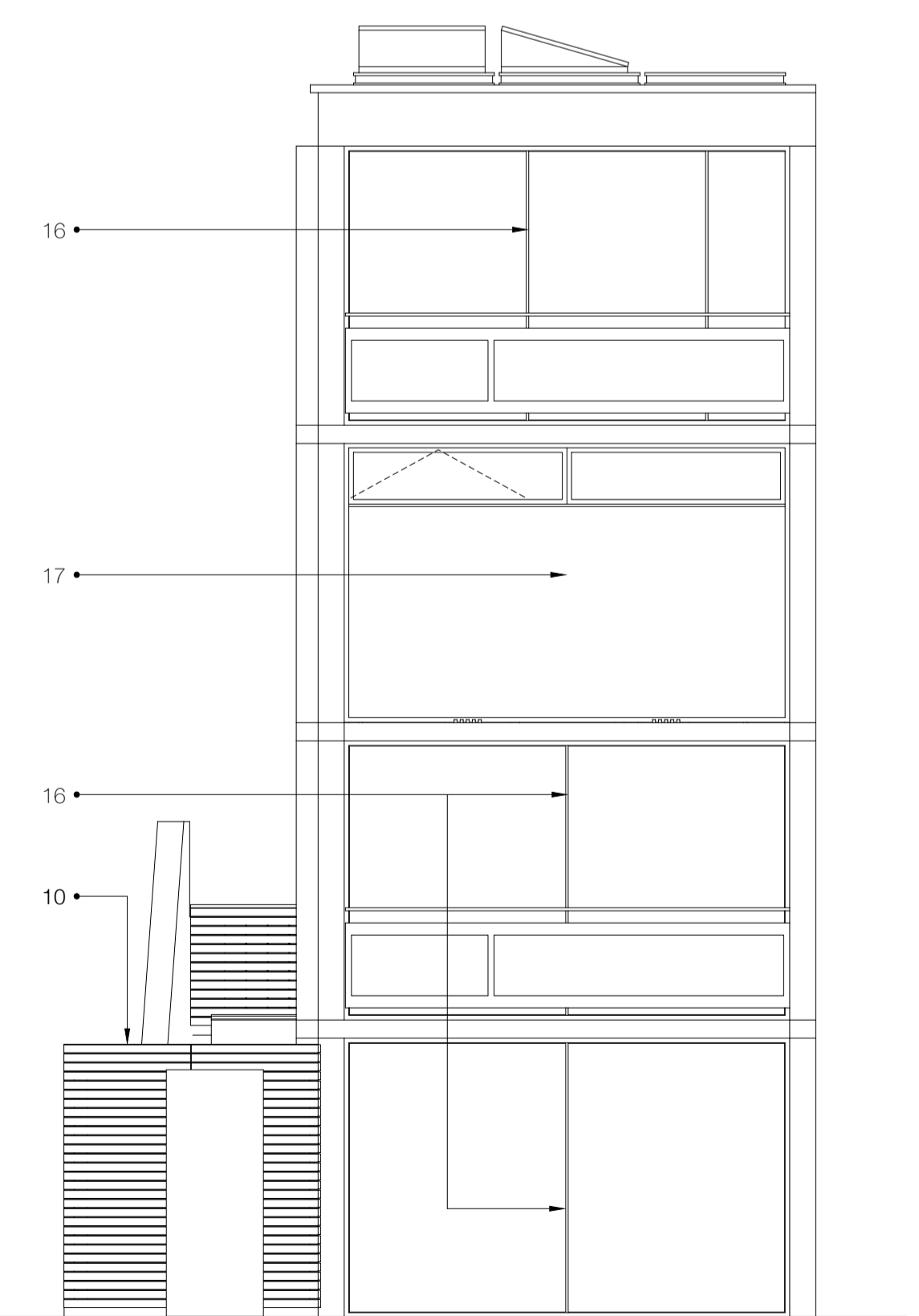


Short Cross Section

Front Elevation

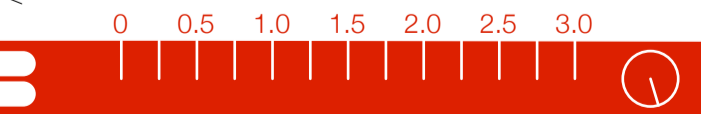


Rear Elevation



H Issued for Planning 09/04/2022

63 Loudoun Rd, London NW8 0DQ, UK  
+44 20 73 72 24 24  
barnabygunning.com



280\_G\_011 H  
9 April 2022  
90 South Hill Park  
London  
NW3 2SN  
Sections and Elevations,  
Existing  
1:50@A1  
CONSTRUCTION