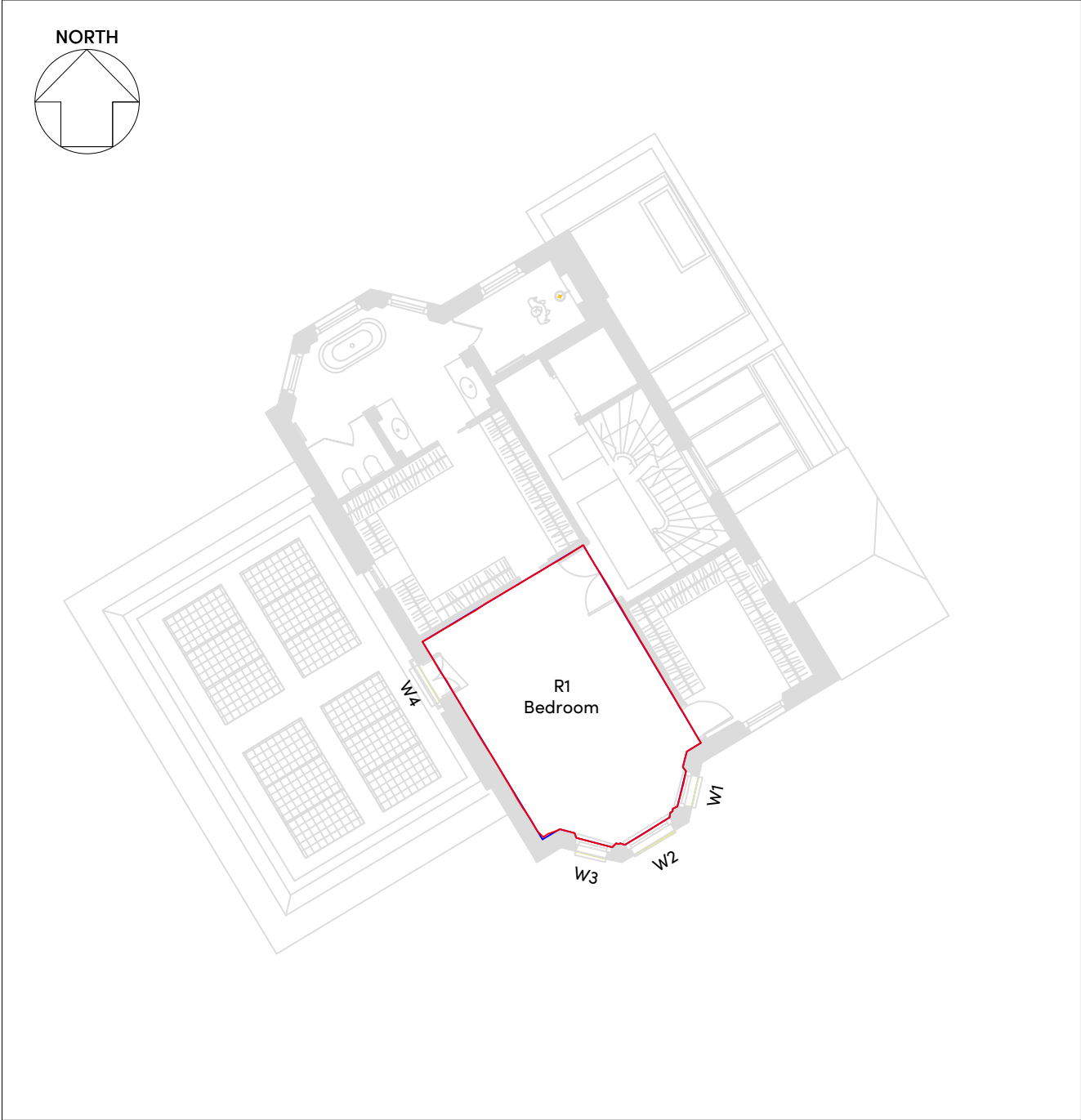
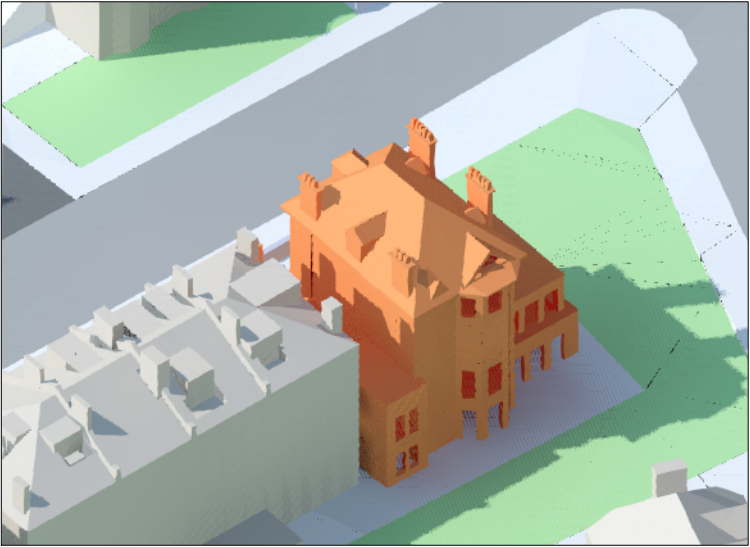


42 Elsworthy Road - Ground Floor

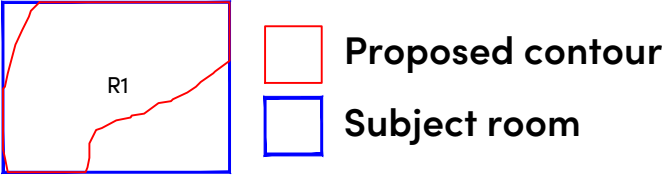


42 Elsworthy Road - First Floor



3D Context View - North

KEY



3D Context View - South

SOURCES OF INFORMATION:
WOLFF ARCHITECTS
2164-DE-Massing _16.03.2022.skp
2164-PL-WORKING_proposed_Plans.dwg
Received 16 March 2022
2164-PL-WORKING_proposed_Elevations & Sections.dwg
Received 24 March 2022
Accucities
High detail 3d Map:
002575_42 Elsworthy Rd,London_HD_MASTER.dwg
Received 28 March 2021

Rev.	Date	Amendments	Initial
HOLLIS SHALL BE INFORMED IN WRITING OF ANY DISCREPANCIES. ALL DIMENSIONS ARE IN METRES ONLY			

TITLE
**Daylight Distribution
Contours/Referencing Plans
42 Elsworthy Road**

CLIENT
Wolff Architects

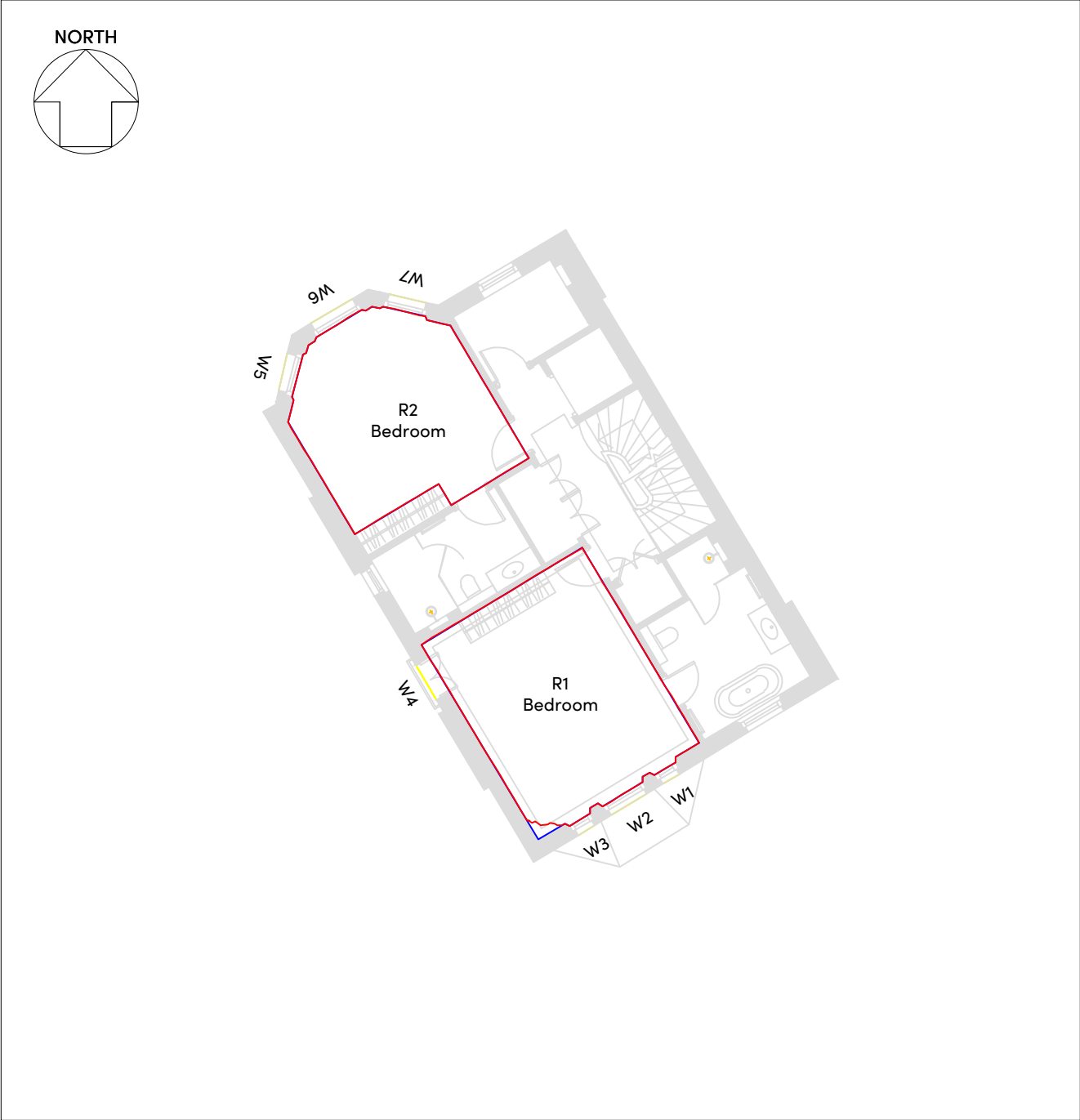
PROJECT
**42 Elsworthy Road
London
NW3 3DL**

DRAWN BY SL/OW	CHECKED SMo
SCALE 1:150@A3	DATE March 2022

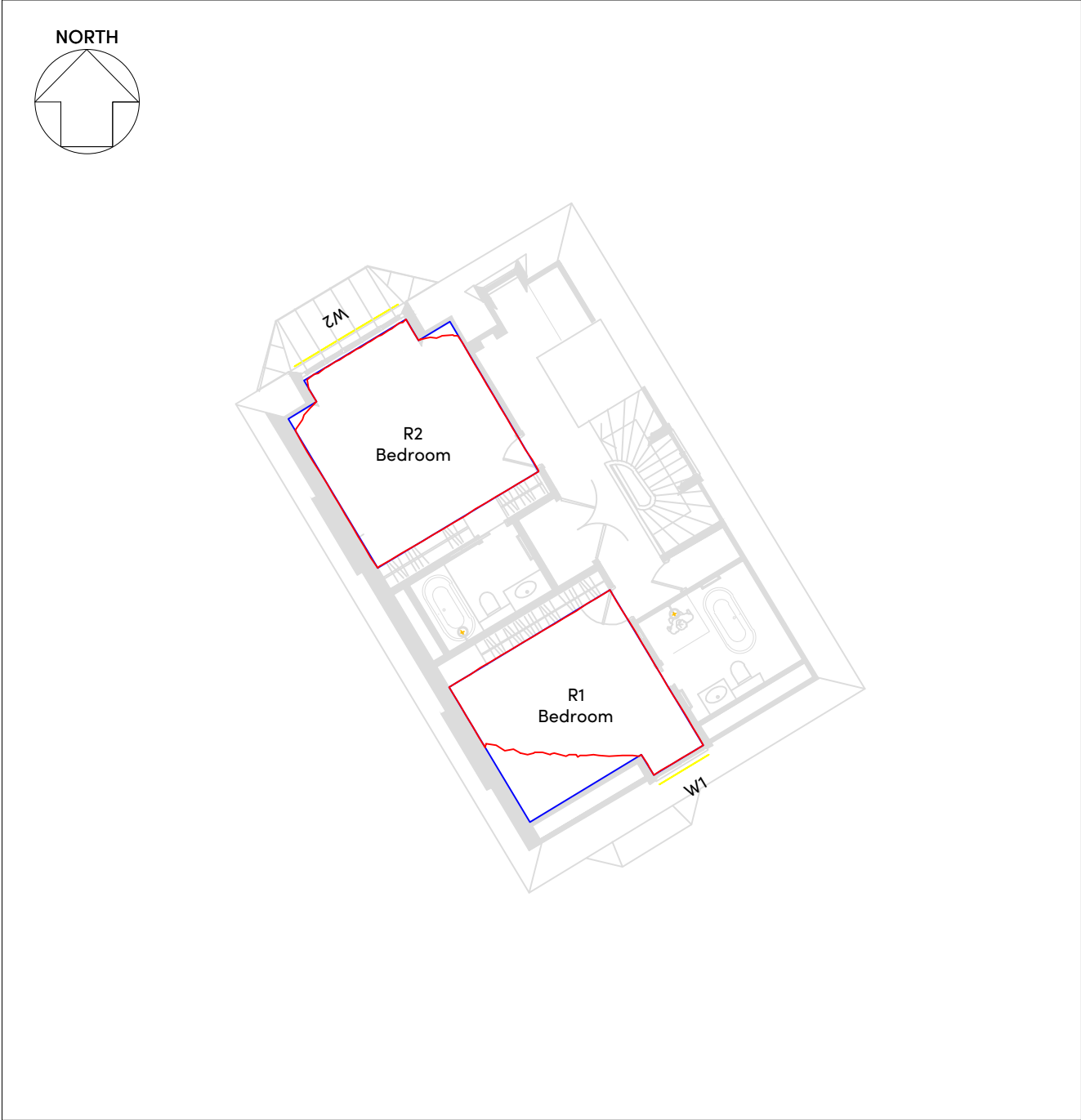
HOLLIS

80-82 Silverthorne Road
London
SW8 3HE
T 020 7622 9555
F 020 7627 9850
W hollisglobal.com

DRAWING NO. 115326_DDINT_02	RELEASE NO. 1
---------------------------------------	-------------------------



42 Elsworthy Road - Second Floor

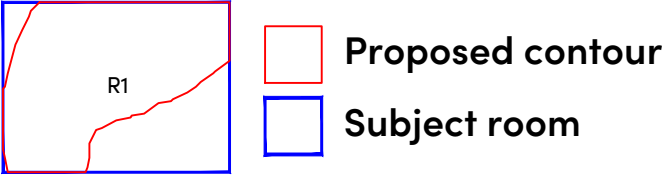


42 Elsworthy Road - Third Floor



3D Context View - North

KEY



3D Context View - South

SOURCES OF INFORMATION:
WOLFF ARCHITECTS
2164-DE-Massing _16.03.2022.skp
2164-PL-WORKING_proposed_Plans.dwg
Received 16 March 2022
2164-PL-WORKING_proposed_Elevations & Sections.dwg
Received 24 March 2022
Accucities
High detail 3d Map:
002575_42 Elsworthy Rd,London_HD_MASTER.dwg
Received 28 March 2021

Rev.	Date	Amendments	Initial
HOLLIS SHALL BE INFORMED IN WRITING OF ANY DISCREPANCIES. ALL DIMENSIONS ARE IN METRES ONLY			

TITLE
**Daylight Distribution
Contours/Referencing Plans
42 Elsworthy Road**

CLIENT
Wolff Architects

PROJECT
**42 Elsworthy Road
London
NW3 3DL**

DRAWN BY	CHECKED
SL/OW	SMo
SCALE	DATE
1:150@A3	March 2022

HOLLIS
80-82 Silverthorne Road
London
SW8 3HE
T 020 7622 9555
F 020 7627 9850
W hollisglobal.com

DRAWING NO.	RELEASE NO.
115326_DDINT_03	1

Appendix D

Daylight study



PROPOSED
DAYLIGHT DISTRIBUTION ANALYSIS

Floor Ref	Room Ref	Room Use	Room Area (m ²)	No Sky Line (m ²)	% of Room Area	BRE Compliant
42 Elsworthy Road						
Basement	R1	Bedroom	6.72	3.755	55.87%	NO
Basement	R2	Bedroom	7.858	6.635	84.44%	YES
Lower Ground	R1	Living Room	56.869	56.868	100.00%	YES
Lower Ground	R2	Kitchen	31.619	31.58	99.88%	YES
Lower Ground	R3	LKD	28.367	28.248	99.58%	YES
Lower Ground	R4	Living Room	19.301	19.278	99.88%	YES
Ground	R1	LD	73.114	73.114	100.00%	YES
Ground	R2	Bedroom	9.163	8.99	98.11%	YES
Ground	R3	LK	17.519	17.246	98.45%	YES
Ground	R4	Study	29.1	29.074	99.91%	YES
First	R1	Bedroom	28.449	28.429	99.93%	YES
Second	R1	Bedroom	25.436	25.268	99.34%	YES
Second	R2	Bedroom	20.388	20.388	100.00%	YES
Third	R1	Bedroom	18.251	15.108	82.78%	YES
Third	R2	Bedroom	21.032	20.741	98.61%	YES

Floor Ref.	Room Ref.	Room Use.	Window Ref.	Proposed Clear Sky	Proposed ADF	Meets BRE Criteria
42 Elsworthy Road						
Basement	R1	Bedroom	W1-L	18.944	0.10	
Basement	R1	Bedroom	W1-U	26.443	1.65	
Total					1.75	YES
Basement	R2	Bedroom	W2-L	28.066	0.14	
Basement	R2	Bedroom	W2-U	39.882	2.35	
Total					2.49	YES
Lower Ground	R1	Living Room	W1-L	61.85	0.05	
Lower Ground	R1	Living Room	W1-U	63.245	0.65	
Lower Ground	R1	Living Room	W2-L	67.83	0.05	
Lower Ground	R1	Living Room	W2-U	68.791	0.71	
Lower Ground	R1	Living Room	W3-L	69.601	0.05	
Lower Ground	R1	Living Room	W3-U	70.033	0.72	
Lower Ground	R1	Living Room	W4-L	78.49	0.09	
Lower Ground	R1	Living Room	W4-U	77.998	1.23	
Lower Ground	R1	Living Room	W5-L	78.57	0.09	
Lower Ground	R1	Living Room	W5-U	78.073	1.23	
Lower Ground	R1	Living Room	W6-L	78.503	0.09	
Lower Ground	R1	Living Room	W6-U	78.013	1.23	
Lower Ground	R1	Living Room	W7-L	70.508	0.06	
Lower Ground	R1	Living Room	W7-U	70.945	0.73	
Lower Ground	R1	Living Room	W8-L	68.344	0.05	
Lower Ground	R1	Living Room	W8-U	68.915	0.71	
Lower Ground	R1	Living Room	W9-L	62.21	0.05	
Lower Ground	R1	Living Room	W9-U	62.927	0.65	
Total					8.43	YES
Lower Ground	R2	Kitchen	W10-L	72.027	0.07	
Lower Ground	R2	Kitchen	W10-U	73.795	1.03	
Lower Ground	R2	Kitchen	W11-L	71.598	0.09	
Lower Ground	R2	Kitchen	W11-U	73.265	1.38	
Lower Ground	R2	Kitchen	W12-L	62.811	0.06	
Lower Ground	R2	Kitchen	W12-U	64.308	0.90	
Total					3.53	YES
Lower Ground	R3	LKD	W13-L	66.337	0.01	
Lower Ground	R3	LKD	W13-U	66.89	0.66	
Lower Ground	R3	LKD	W14-L	66.264	0.01	
Lower Ground	R3	LKD	W14-U	66.89	0.66	
Lower Ground	R3	LKD	W15-L	9.667	0.00	
Lower Ground	R3	LKD	W15-U	12.276	0.08	
Lower Ground	R3	LKD	W16-L	5.532	0.00	
Lower Ground	R3	LKD	W16-U	6.709	0.06	
Lower Ground	R3	LKD	W17-L	5.52	0.00	
Lower Ground	R3	LKD	W17-U	6.773	0.07	
Lower Ground	R3	LKD	W18-L	5.313	0.00	
Lower Ground	R3	LKD	W18-U	6.481	0.06	
Lower Ground	R3	LKD	W19-L	5.06	0.00	
Lower Ground	R3	LKD	W19-U	6.108	0.04	
Lower Ground	R3	LKD	W20-L	8.612	0.00	
Lower Ground	R3	LKD	W20-U	11.027	0.07	
Lower Ground	R3	LKD	W21-L	55.261	0.09	
Lower Ground	R3	LKD	W21-U	65.338	1.49	
Total					3.31	YES

Floor Ref.	Room Ref.	Room Use.	Window Ref.	Proposed Clear Sky	Proposed ADF	Meets BRE Criteria
Lower Ground	R4	Living Room	W22	48.594	0.63	
Lower Ground	R4	Living Room	W23	67.863	1.29	
Lower Ground	R4	Living Room	W24	67.664	0.87	
Total					2.79	YES
Ground	R1	LD	W1-L	62.104	0.01	
Ground	R1	LD	W1-U	62.417	0.55	
Ground	R1	LD	W2-L	69.906	0.01	
Ground	R1	LD	W2-U	70.304	0.62	
Ground	R1	LD	W3-L	72.701	0.01	
Ground	R1	LD	W3-U	73.088	0.65	
Ground	R1	LD	W4-L	81.355	0.02	
Ground	R1	LD	W4-U	81.061	1.09	
Ground	R1	LD	W5-L	81.437	0.02	
Ground	R1	LD	W5-U	81.145	1.09	
Ground	R1	LD	W6-L	81.397	0.02	
Ground	R1	LD	W6-U	81.121	1.09	
Ground	R1	LD	W7-L	73.323	0.01	
Ground	R1	LD	W7-U	73.722	0.65	
Ground	R1	LD	W8-L	70.398	0.01	
Ground	R1	LD	W8-U	70.838	0.63	
Ground	R1	LD	W9-L	61.917	0.01	
Ground	R1	LD	W9-U	62.37	0.55	
Ground	R1	LD	W10-L	76.27	0.01	
Ground	R1	LD	W10-U	77.489	0.60	
Ground	R1	LD	W11-L	75.642	0.02	
Ground	R1	LD	W11-U	76.985	0.78	
Ground	R1	LD	W12-L	66.385	0.01	
Ground	R1	LD	W12-U	68.28	0.53	
Total					8.96	YES
Ground	R2	Bedroom	W13-L	73.631	0.05	
Ground	R2	Bedroom	W13-U	74.722	2.27	
Ground	R2	Bedroom	W14-L	73.61	0.05	
Ground	R2	Bedroom	W14-U	74.696	2.26	
Total					4.62	YES
Ground	R3	LK	W15-L	9.054	0.01	
Ground	R3	LK	W15-U	11.115	0.14	
Ground	R3	LK	W16-L	9.48	0.01	
Ground	R3	LK	W16-U	11.881	0.15	
Ground	R3	LK	W17-L	9.158	0.01	
Ground	R3	LK	W17-U	11.761	0.15	
Ground	R3	LK	W18-L	8.238	0.01	
Ground	R3	LK	W18-U	10.207	0.08	
Ground	R3	LK	W19	N/A	5.67	
Ground	R3	LK	W20-L	72.619	0.03	
Ground	R3	LK	W20-U	72.88	1.11	
Total					7.36	YES
Ground	R4	Study	W21-L	65.697	0.02	
Ground	R4	Study	W21-U	66.508	0.98	
Ground	R4	Study	W22-L	74.292	0.03	
Ground	R4	Study	W22-U	75.358	1.67	
Ground	R4	Study	W23-L	73.425	0.02	
Ground	R4	Study	W23-U	74.337	1.09	

Floor Ref.	Room Ref.	Room Use.	Window Ref.	Proposed Clear Sky	Proposed ADF	Meets BRE Criteria
Total					3.81	YES
First	R1	Bedroom	W1-L	67.825	0.01	
First	R1	Bedroom	W1-U	67.152	0.90	
First	R1	Bedroom	W2-L	77.527	0.02	
First	R1	Bedroom	W2-U	75.986	1.52	
First	R1	Bedroom	W3-L	75.182	0.01	
First	R1	Bedroom	W3-U	74.261	0.98	
First	R1	Bedroom	W4-L	80.468	0.06	
First	R1	Bedroom	W4-U	80.31	1.45	
Total					4.96	YES
Second	R1	Bedroom	W1-L	70.72	0.00	
Second	R1	Bedroom	W1-U	67.793	0.54	
Second	R1	Bedroom	W2-L	77.929	0.01	
Second	R1	Bedroom	W2-U	73.237	1.28	
Second	R1	Bedroom	W3-L	71.306	0.00	
Second	R1	Bedroom	W3-U	68.28	0.55	
Second	R1	Bedroom	W4-L	79.656	0.10	
Second	R1	Bedroom	W4-U	74.067	1.17	
Total					3.65	YES
Second	R2	Bedroom	W5-L	78.052	0.01	
Second	R2	Bedroom	W5-U	72.733	1.36	
Second	R2	Bedroom	W6-L	79.389	0.01	
Second	R2	Bedroom	W6-U	73.934	1.75	
Second	R2	Bedroom	W7-L	70.732	0.01	
Second	R2	Bedroom	W7-U	66.803	1.26	
Total					4.40	YES
Third	R1	Bedroom	W1	80.342	2.22	
Total					2.22	YES
Third	R2	Bedroom	W2	80.883	1.92	
Total					1.92	YES

Appendix E

Sunlight study



Floor Ref.	Room Ref.	Room Use.	Window Ref.	Proposed Window Winter %	Proposed Window Annual %	Proposed Room Winter %	Proposed Room Annual %	Meets BRE Criteria
42 Elsworth Road								
Basement	R1	Bedroom	W1	0	7	0	7	NO
Lower Ground	R1	Living Room	W1	18	48			
Lower Ground	R1	Living Room	W2	17	54			
Lower Ground	R1	Living Room	W3	18	55			
Lower Ground	R1	Living Room	W4	17	52			
Lower Ground	R1	Living Room	W5	16	50			
Lower Ground	R1	Living Room	W6	16	50			
Lower Ground	R1	Living Room	W7	0	4			
Lower Ground	R1	Living Room	W8	0	4			
Lower Ground	R1	Living Room	W9	0	5	27	91	YES
Lower Ground	R3	LKD	W13	0	2			
Lower Ground	R3	LKD	W14	0	2			
Lower Ground	R3	LKD	W15	0	0			
Lower Ground	R3	LKD	W16	0	0			
Lower Ground	R3	LKD	W17	0	0			
Lower Ground	R3	LKD	W18	0	0			
Lower Ground	R3	LKD	W19	0	0			
Lower Ground	R3	LKD	W20	0	0			
Lower Ground	R3	LKD	W21	11	49	11	51	YES
Lower Ground	R4	Living Room	W22	3	20			
Lower Ground	R4	Living Room	W23	14	47			
Lower Ground	R4	Living Room	W24	19	45	22	69	YES
Ground	R1	LD	W1	17	43			
Ground	R1	LD	W2	18	54			
Ground	R1	LD	W3	19	56			
Ground	R1	LD	W4	17	52			
Ground	R1	LD	W5	17	52			
Ground	R1	LD	W6	16	51			
Ground	R1	LD	W7	0	6			
Ground	R1	LD	W8	0	6			
Ground	R1	LD	W9	0	6			
Ground	R1	LD	W10	3	23			
Ground	R1	LD	W11	0	8			
Ground	R1	LD	W12	0	0	28	92	YES
Ground	R3	LK	W15	0	2			
Ground	R3	LK	W16	0	1			
Ground	R3	LK	W17	0	0			
Ground	R3	LK	W18	0	0			
Ground	R3	LK	W19	3	13			
Ground	R3	LK	W20	17	54	17	54	YES
Ground	R4	Study	W21	5	33			
Ground	R4	Study	W22	18	58			
Ground	R4	Study	W23	19	49	23	78	YES
First	R1	Bedroom	W1	6	34			
First	R1	Bedroom	W2	22	61			
First	R1	Bedroom	W3	22	52			
First	R1	Bedroom	W4	15	47	29	97	YES
Second	R1	Bedroom	W1	16	39			
Second	R1	Bedroom	W2	23	57			
Second	R1	Bedroom	W3	16	39			
Second	R1	Bedroom	W4	14	44	30	91	YES
Third	R1	Bedroom	W1	24	63	24	63	YES