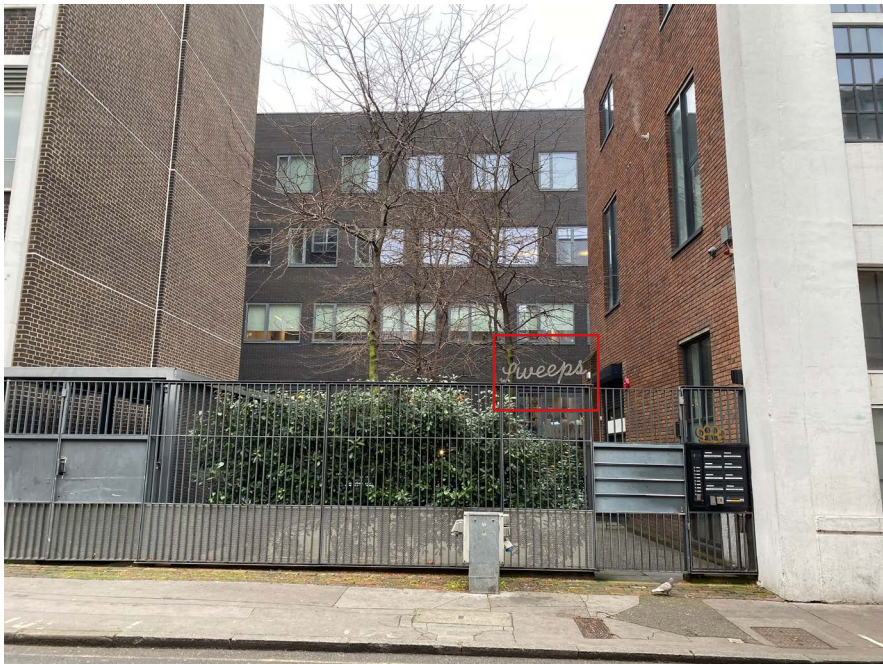




East Elevation - E1  
Removal of Building ID



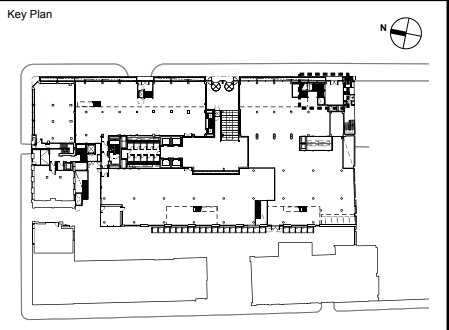
North Elevation - E6 & E7  
Removal of Building Addresses



West Elevation - E10  
Removal of Building ID

- Notes**
1. All dimensions in mm unless otherwise stated.
  2. This drawing is to be read in conjunction with all relevant architects and engineers drawings, the specification for the works and any other specialist drawings.
  3. All details are for technical intent purposes only - contractor to undertake full site technical survey to confirm all sizes, fixing details and access requirements on site. Any discrepancies are to be notified to the consultant prior to fabrication.
  4. Contractor must submit production shop drawings for consultant review/comment prior to fabrication.
  5. Sign contractor to calculate and determine structural loadings for all elements in accordance with site specific conditions.


A	08.04.2022	Initial issue
Rev	Date	Description



Project  
**10432 - Johnson Gardens**

Client  
**Johnson Hatton Office Unit**  
Trust  
11-15 Seaton Place  
St Helier  
Jersey  
JE4 0QH

Consultant  
**Endpoint Limited**  
165 Tower Bridge Road,  
London, SE1 3LW  
+44 (0)20 7089 2670  
weare**endpoint**.com

**endpoint.**

Stage  
**Advertisement Consent**

Drawing Title  
**Removals**

Project No.	10487	
Drawn:	OS	
Checked:	CT	
Approved:	GW	
Sheet size:	A3 (420mm x 297mm)	
Scale:	NTS	

Drawing No.	Sheet	Revision
<b>10432-014</b>	<b>01</b>	<b>A</b>