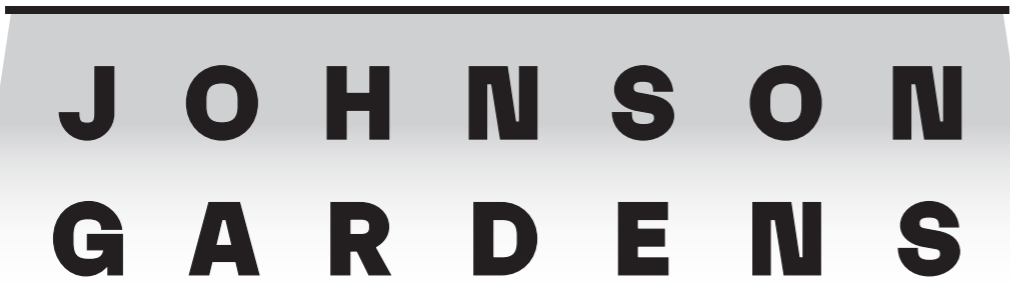


E10



Individual Non-Illuminated Letters

E10 Size: 6000mm x 1390mm x 60mm
E10 Height to underside: 365mm
E10 Cap height: 478mm

Specification

Fabricated lettering fixed to internal face of fencing, with face and returns painted black. Lettering to push through apertures in fence by 10mm.

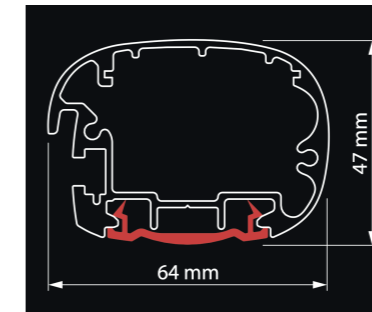
Illumination:

Lettering externally illuminated via white LEDs.

Quantity

1

New electrical feed required.



External illumination - Trough light

L1 Size: 6640mm x 47mm x 164mm
L1 Height to underside: 2100mm

Quantity

1

New electrical feed required.

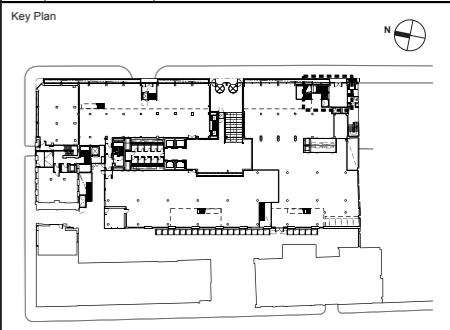
Specification

Slim 45mm aluminium profile
Black housing colour
4-way adjustable bracket

Dust and water tight - sealed to IP66
Magnifying lens with built in gasket Internal Tridonic LED drivers
2185 Lumens per metre light output 11.5 watts per metre
Conforms to EN65958 electrical safety requirements and tested by Nemko Ltd

- Notes**
1. All dimensions in mm unless otherwise stated.
 2. This drawing is to be read in conjunction with all relevant architects and engineers drawings, the specification for the works and any other specialist drawings.
 3. All details are for technical intent purposes only - contractor to undertake full site technical survey to confirm all sizes, fixing details and access requirements on site. Any discrepancies are to be notified to the consultant prior to fabrication.
 4. Contractor must submit production shop drawings for consultant review/comment prior to fabrication.
 5. Sign contractor to calculate and determine structural loadings for all elements in accordance with site specific conditions.

Rev	Date	Description
A	08.04.2022	Initial issue



Project
10432 - Johnson Gardens

Client
Johnson Hatton Office Unit Trust
11-15 Seaton Place
St Helier
Jersey
JE4 0QH

Consultant
Endpoint Limited
165 Tower Bridge Road,
London, SE1 3LW
+44 (0)20 7089 2670
weareendpoint.com

Stage
Advertisement Consent

Drawing Title
Sign Type - E10

Project No.	10487
Drawn:	OS
Checked:	CT
Approved:	GW
Sheet size:	A3 (420mm x 297mm)
Scale:	1:50 @ A3

Drawing No.	Sheet	Revision
10432-013	01	A

