

E5



**Illuminated Projecting Sign**  
 E5 Size: 1138mm x 2000mm x 88mm  
 E5 Height to underside: 3710mm  
 E5 Cap height: 120mm

**Specification**  
 Double sided aluminium panels painted black, with push through clear acrylic lettering.

Wall mount fabrication fabricated from aluminium painted black to match panels.

**Illumination:**  
 Internally illuminated via white LEDs only wordmark to illuminate.

**Quantity**  
 1

**New electrical feed required.**

E11



**Illuminated Projecting Sign**  
 E11 Size: 1138mm x 2000mm x 88mm  
 E11 Height to underside: 3130mm  
 E11 Cap height: 120mm

**Specification**  
 Double sided aluminium panels painted black, with push through clear acrylic lettering.

Wall mount fabrication fabricated from aluminium painted black to match panels.

**Illumination:**  
 Internally illuminated via white LEDs only wordmark to illuminate.

**Quantity**  
 1

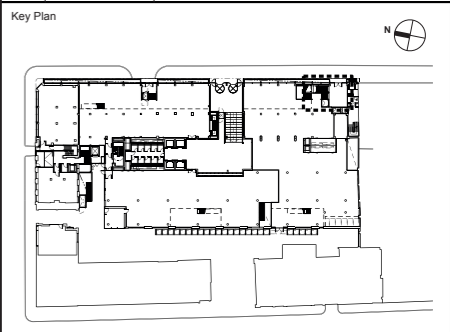
**New electrical feed required.**

Scale 1:25 @ A3



- Notes**
- All dimensions in mm unless otherwise stated.
  - This drawing is to be read in conjunction with all relevant architects and engineers drawings, the specification for the works and any other specialist drawings.
  - All details are for technical intent purposes only - contractor to undertake full site technical survey to confirm all sizes, fixing details and access requirements on site. Any discrepancies are to be notified to the consultant prior to fabrication.
  - Contractor must submit production shop drawings for consultant review/comment prior to fabrication.
  - Sign contractor to calculate and determine structural loadings for all elements in accordance with site specific conditions.

Rev	Date	Description
A	08.04.2022	Initial issue



Project  
**10432 - Johnson Gardens**

Client  
**Johnson Hatton Office Unit**  
 Trust  
 11-15 Seaton Place  
 St Helier  
 Jersey  
 JE4 0QH

Consultant  
**Endpoint Limited**  
 165 Tower Bridge Road,  
 London, SE1 3LW  
 +44 (0)20 7089 2670  
 weareendpoint.com

Stage  
**Advertisement Consent**

Drawing Title  
**Sign Type - E5 & E11**

Project No.	10487	
Drawn:	OS	
Checked:	CT	
Approved:	GW	
Sheet size:	A3 (420mm x 297mm)	
Scale:	1:25 @ A3	

Drawing No.	Sheet	Revision
<b>10432-010</b>	<b>01</b>	<b>A</b>