

E4

J O H N S O N
G A R D E N S

Individual Illuminated Letters
E4 Size: 3000mm x 695mm x 50mm
E4 Height to underside: 4000mm
E4 Cap height: 240mm

Specification
Individually face illuminated MBX lettering bonded to
facade with returns painted black.

Illumination:
Lettering internally illuminated individually via white
LEDs.

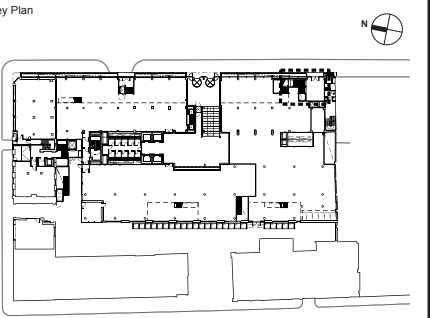
Quantity
1

New electrical feed required.



- Notes
1. All dimensions in mm unless otherwise stated.
 2. This drawing is to be read in conjunction with all relevant architects and engineers drawings, the specification for the works and any other specialist drawings.
 3. All details are for technical intent purposes only - contractor to undertake full site technical survey to confirm all sizes, fixing details and access requirements on site. Any discrepancies are to be notified to the consultant prior to fabrication.
 4. Contractor must submit production shop drawings for consultant review/comment prior to fabrication.
 5. Sign contractor to calculate and determine structural loadings for all elements in accordance with site specific conditions.

Rev	Date	Description
-----	------	-------------



Project
10432 - Johnson Gardens

Client
Johnson Hatton Office Unit
Trust
11-15 Seaton Place
St Helier
Jersey
JE4 0QH

Consultant
Endpoint Limited
165 Tower Bridge Road,
London, SE1 3LW
+44 (0)20 7089 2670
weare**endpoint**.com

endpoint.

Stage
Advertisement Consent

Drawing Title
Sign Type - E4

Project No.	10487	
Drawn:	OS	
Checked:	CT	
Approved:	GW	
Sheet size:	A3 (420mm x 297mm)	
Scale:	1:25 @ A3	

Drawing No.	Sheet	Revision
10432-009	01	A