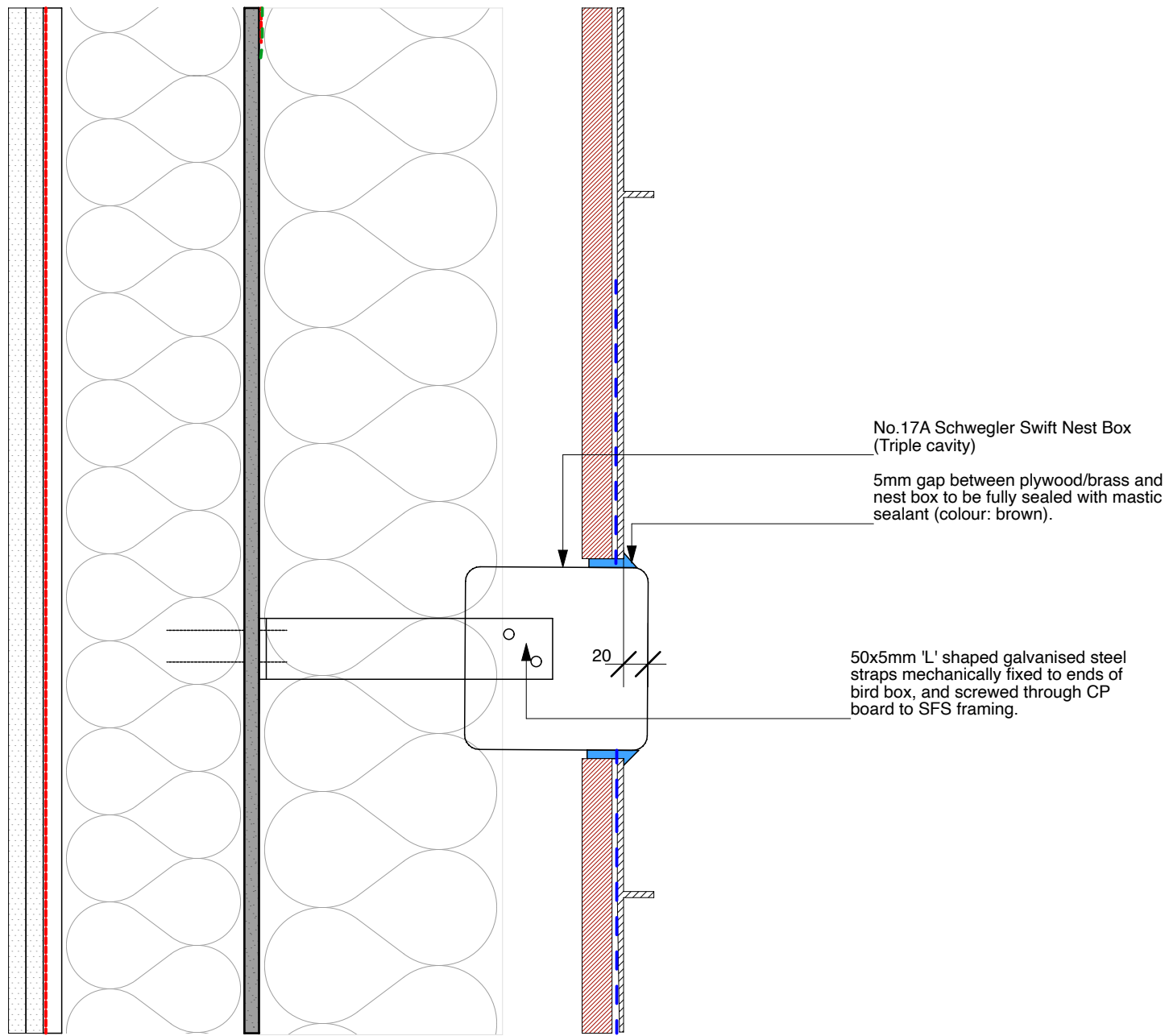
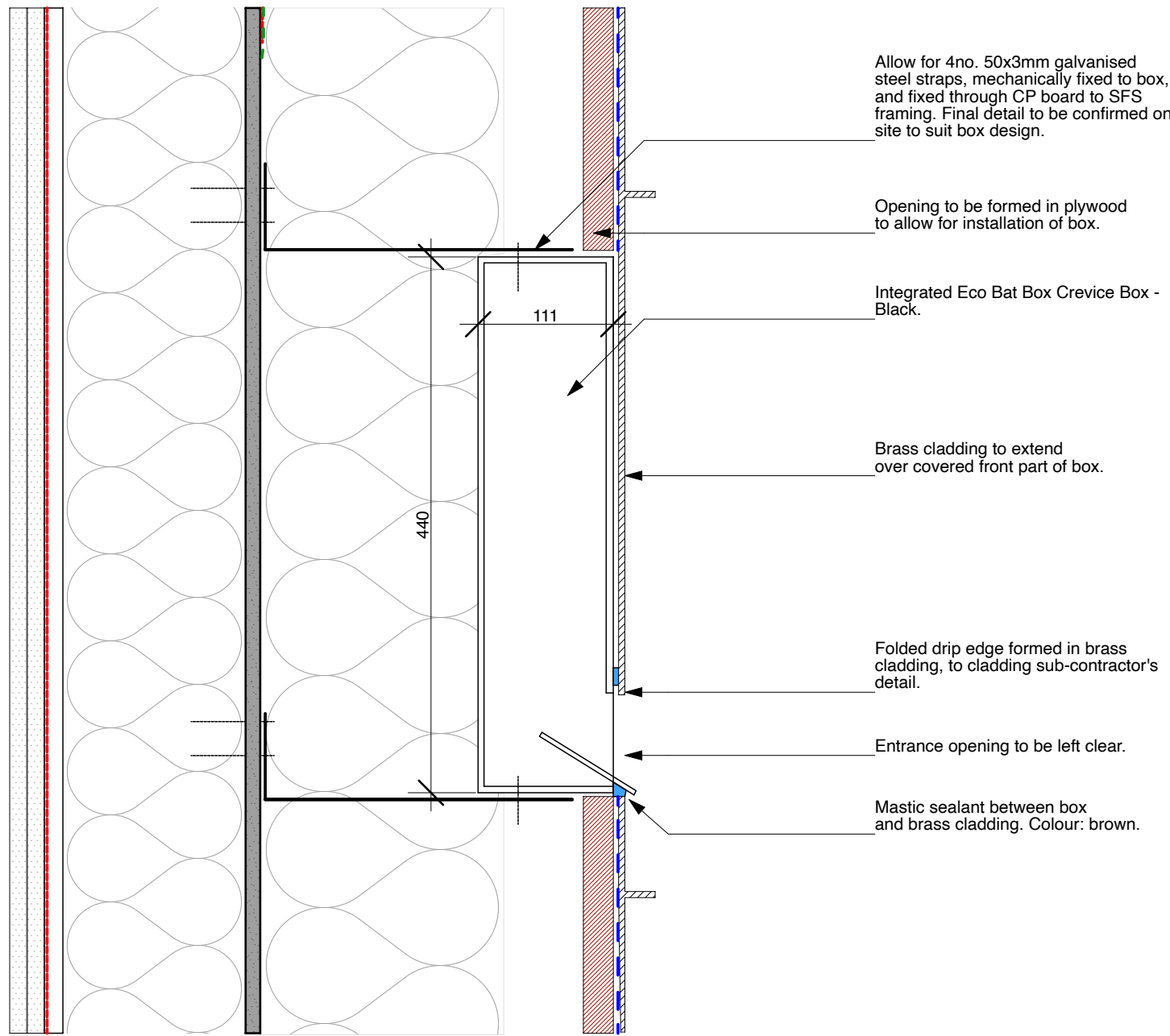
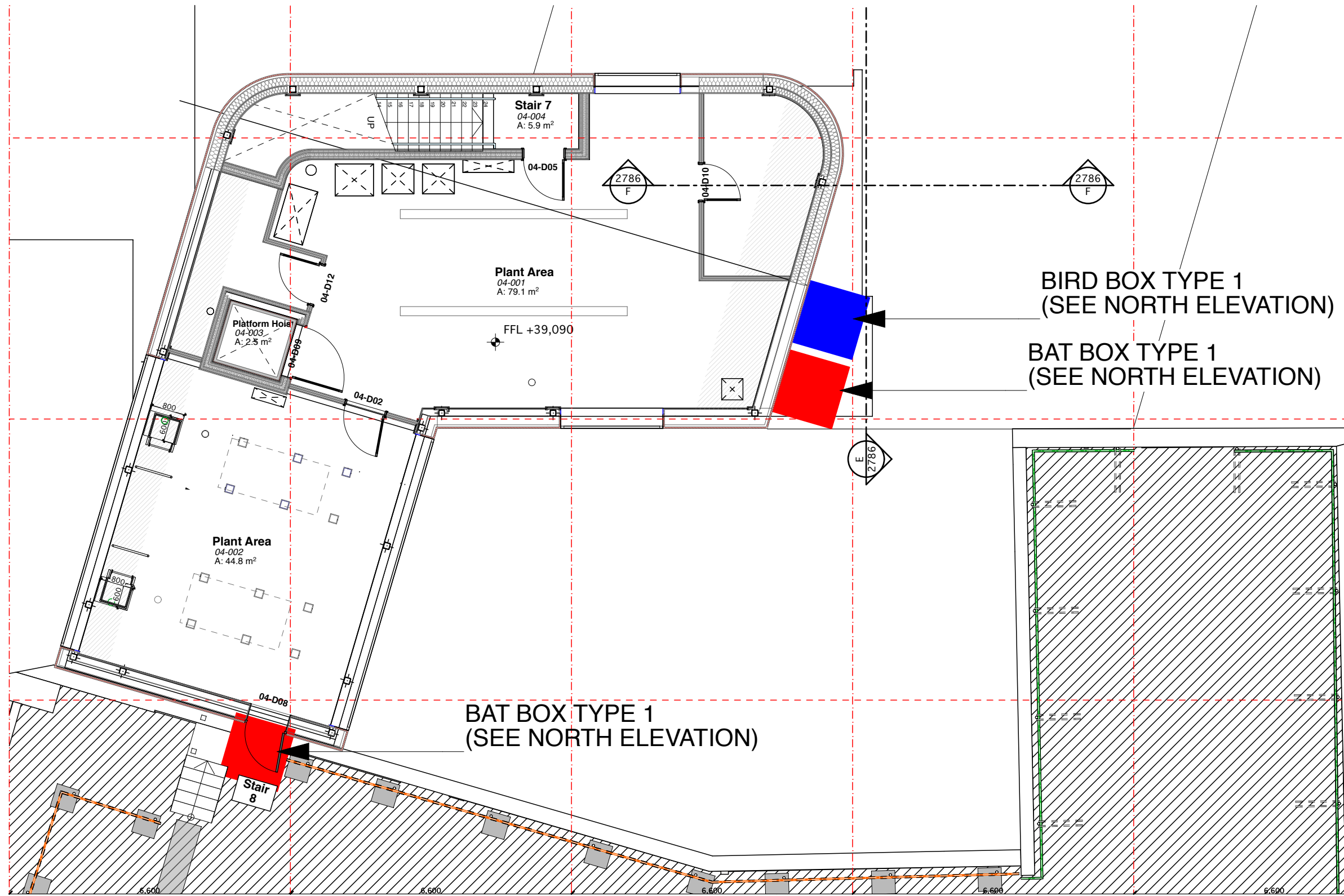


Disclaimer: This document and its design content is copyright BMJ Architects ©. No implied licence exists. It shall be read in conjunction with all other associated project information including models, specifications, schedules and related consultants documents. Do not scale from documents. This drawing should not be used to calculate areas for the purposes of valuation or for any purpose other than for which it was produced. All work must comply with relevant British Standards and Building Regulations requirements. All dimensions to be checked on site by the contractor and such dimensions to be their responsibility. Immediately report any discrepancies, errors or omissions on this document to the Originator. If in doubt ASK.



LEGEND

BAT BOX TYPE 1

Integrated Eco Bat Box Crevice Box - Black (available from www.nhbs.com).

Materials: Recycled LDPE plastic outer with internal FSC OSB roost chamber

Construction: Outer panels welded, internal chamber formed from stapled panels

Finish: Black carcass with black front panels

Dimensions: 44cm H x 21.5cm W x 11.1cm D. Entrance: 17mm wide. Internal (Crevice): Two crevices, 22mm wide

Weight: 3kg

Access: No access once fitted, self cleaning, droppings fall out of entrance slot

Installation: See detail.

BIRD BOX TYPE 1

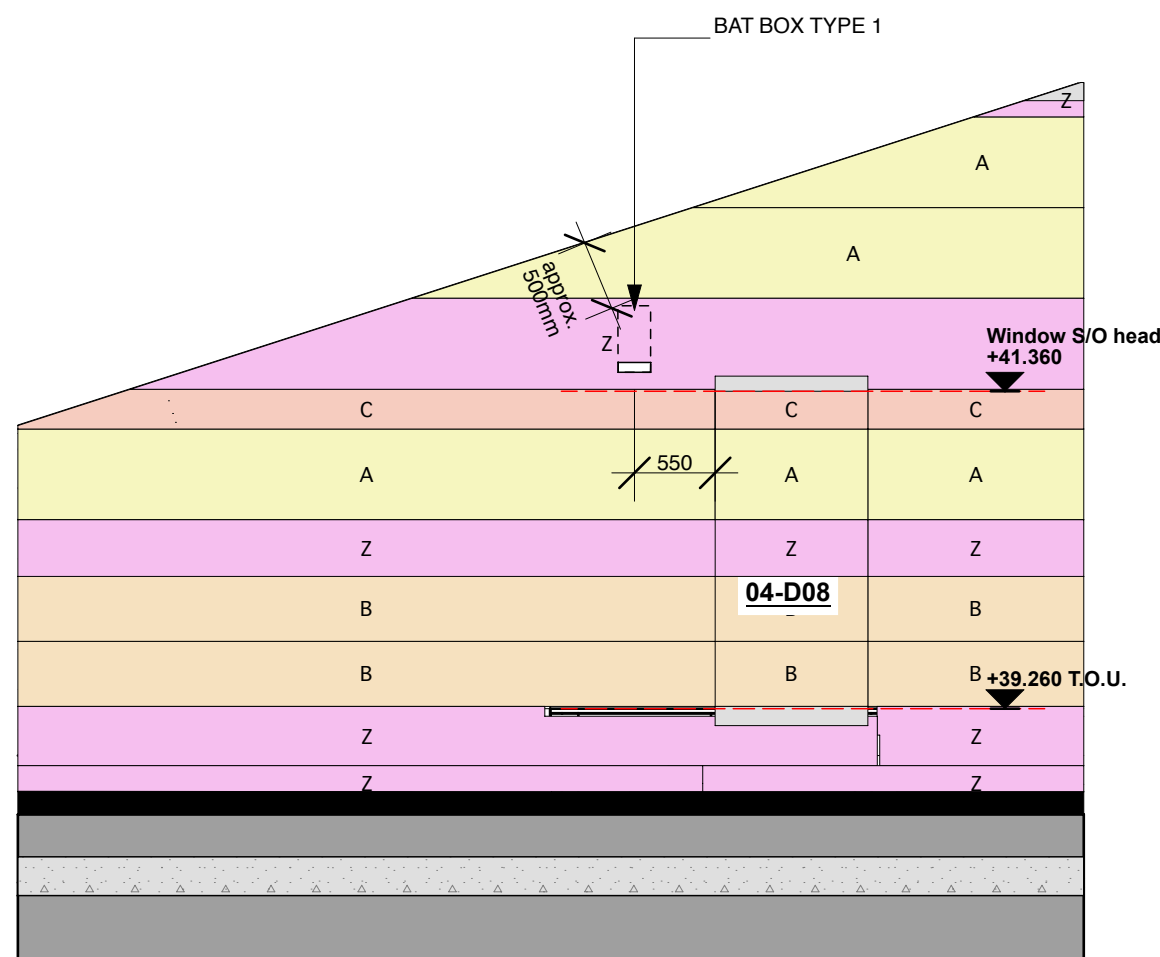
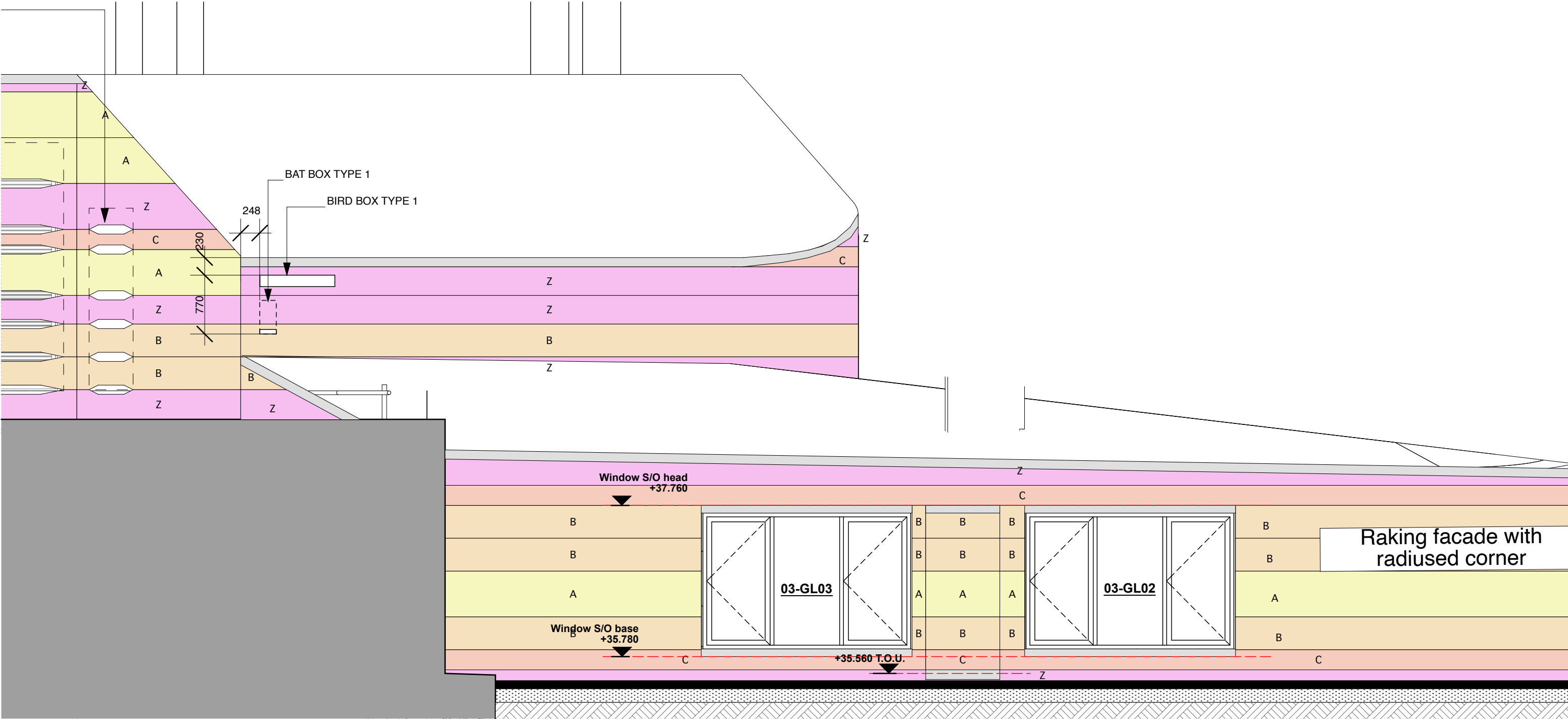
Schegler Swift Nest Box No.17A (triple cavity).

Installation: See detail.

NOTES

1. Details shown indicate design intent only. CDP cladding/external wall designer to provide final details for cladding interfaces with bird and bat boxes, and fixing details for bird and bat boxes.

2. Setting out dimensions shown are approximate only and shall be confirmed on site in coordination with cladding framing.



P01 First Issue	DM	DM	DM	17/03/2022
Rev	Description	Dm	Chk	Apr
				Date

bmj architects

London / Glasgow

Boswell Mitchell & Johnston
23-24 Easton Street
London, WC1X 0DS

020 7833 9974
london@bmjarchitects.co.uk
www.bmjarchitects.co.uk

Client
London School of Hygiene & Tropical Medicine

Project
TP2
Tavistock Place
Tavistock Place

Document Title
External Works
Bird & Bat Box Layout

Scale(s) @A1 1:50, 1:5, 1:100 BMJ Project Ref: [2824 AW13]

File Name
Project Originator Volume Level Type Role Number
TP2-BMJ-ZZ-XX-DR-A-9020

Status Code
S1 Contractor's Proposal

Revision Code
P01 Approval

© Boswell Mitchell & Johnston Ltd.