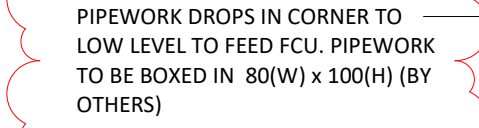


FCU-8-01	DAIKIN AC (AMERICAS), Inc.	Fan_Coi_Unit-Daikin (FXQ4-M) (07-24_MBH)-WallMount-Conn8mm	Indoor unit
FCU-8-02	Daikin Europe N.V.	fcq353d5evb_RoundFlowCassetteAutoCleaningPanel	Indoor unit
FCU-8-03	Daikin Europe N.V.	FXI.063p2veb	Indoor unit
FCU-8-04	Daikin Europe N.V.	FXI.063p2v2eb	Indoor unit
FCU-8-05	Daikin Europe N.V.	FXI.063p2v2eb	Indoor unit
FCU-8-06	Daikin Europe N.V.	FXI.063p2v2eb	Indoor unit
FCU-8-07	Daikin Europe N.V.	FXI.063p2v2eb	Indoor unit



- LEGEND**
- PIPEWORK AT LOW LEVEL TO BE BOXED IN (BY OTHERS)
 - PIPEWORK AT HIGH LEVEL / WITHIN CEILING VOID
 - PIPEWORK WITH FLOOR VOID.

 POSSIBLE RISE LOCATION

 BUILDERS WORK OPENING IN WALL

P04	Revised To Suit Comments. Re-issued For Approval.	13.04.2017
P03	Drawings Issued For Approval	07.04.2017
P02	Revised To Suit Site Survey And Comments	31.00.2017
P01	For Approval.	10.03.2017

Revision Number	Revision Description	Revision Date
-----------------	----------------------	---------------

Related Specification
This drawing is to be read in conjunction
with specification:

Related Drawings



Towers Point,
Towers Business Park,
Rugeley, Staffordshire
WS15 1UN
T: 0203 301 5803
cad@celsius-group.co.uk

Scale	Date
1 : 50@A0	13.04.22

Designed	CAD	Checked
RB	JA	RB

Client

Site Location
Holborn Town Hall
193 - 197 High Holborn,
London
WC1V 7BD

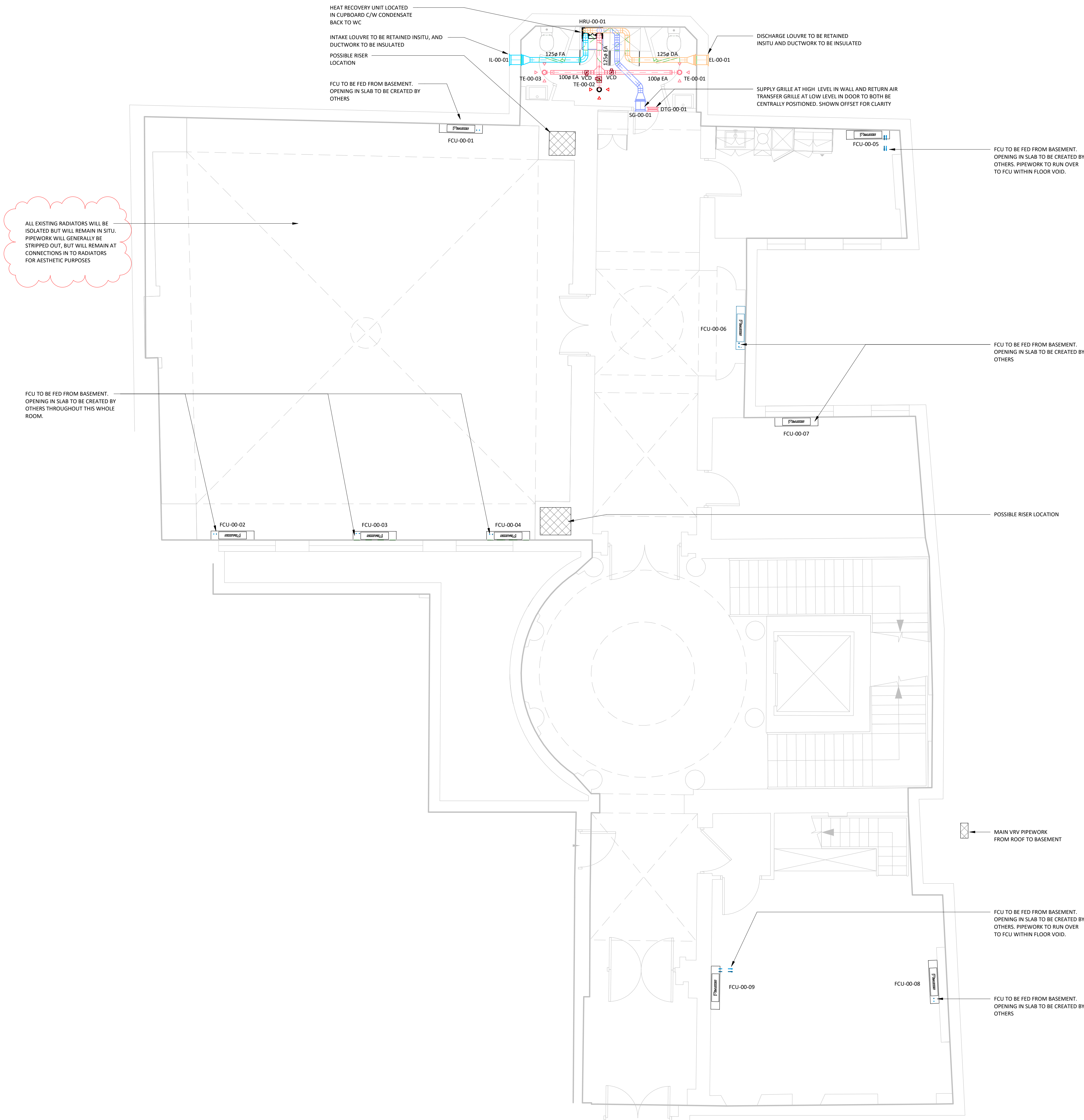
Title
MECHANICAL SERVICES BASEMENT

Drawing No	Revision
------------	----------

This drawing is confidential and is the copyright property of the company. It must not be disclosed, loaned or copied without written permission.



Mechanical Equipment Schedule - 00 Ground Floor			
Tag Number	Manufacturer	Type	Type Comments
Indoor unit			
FCU-00-01	Daikin Europe N.V. FXLQ40p2veb	Indoor unit	
FCU-00-02	Daikin Europe N.V. FXLQ40p2veb	Indoor unit	
FCU-00-03	Daikin Europe N.V. FXLQ40p2veb	Indoor unit	
FCU-00-04	Daikin Europe N.V. FXLQ40p2veb	Indoor unit	
FCU-00-05	Daikin Europe N.V. FXLQ40p2veb	Indoor unit	
FCU-00-06	Daikin Europe N.V. FXLQ40p2veb	Indoor unit	
FCU-00-07	Daikin Europe N.V. FXLQ40p2veb	Indoor unit	
FCU-00-08	Daikin Europe N.V. FXLQ40p2veb	Indoor unit	
FCU-00-09	Daikin Europe N.V. FXLQ40p2veb	Indoor unit	



- NOTES:
- BE BOX FOR ALL UNITS SERVING THIS GROUND FLOOR AREA TO BE LOCATED IN THE BASEMENT WITH PIPEWORK RISING FROM BELOW TO EACH UNIT.
 - PUMPED CONDENSATE DRAINAGE TO BE RUN WITH REFRIGERATION PIPEWORK, DOWN INTO THE BASEMENT WHERE IT WILL TERMINATE TO A LOCAL SVP.
 - ALL UNITS UNLESS OTHERWISE STATED ARE TO BE CENTRALLY CONTROLLED.
 - WHERE POSSIBLE, WE WILL USE EXISTING PENETRATIONS AVAILABLE FOLLOWING STRIP OUT OF EXISTING CENTRAL HEATING PIPEWORK

- LEGEND
- PIPEWORK AT LOW LEVEL TO BE BOXED IN (BY OTHERS)
 - PIPEWORK AT HIGH LEVEL / WITHIN CEILING VOID
 - PIPEWORK WITH FLOOR VOID.
 - POSSIBLE RISE LOCATION
 - BUILDERS WORK OPENING IN WALL

PD4	Revised To Suit Comments. Re-issued For Approval.	13.04.22
PD3	Drawings Issued For Approval	07.04.22
PD2	Revised To Suit Site Survey And Comments	31.00.22
PD1	For Approval.	10.03.22

Revision Number	Revision Description	Revision Date
Revision Schedule		

Related Specification
This drawing is to be read in conjunction with specification

Related Drawings



Towers Point,
Towers Business Park,
Rugeley, Staffordshire
WS15 1UN
T: 0203 301 5803
cad@celsius-group.co.uk

Scale	Date
1 : 50@AD	13.04.22

Designed	CAD	Checked
RB	JA	RB

Client
Dthree

Site Location
Holborn Town Hall
193 - 197 High Holborn,
London
WC1V 7BD

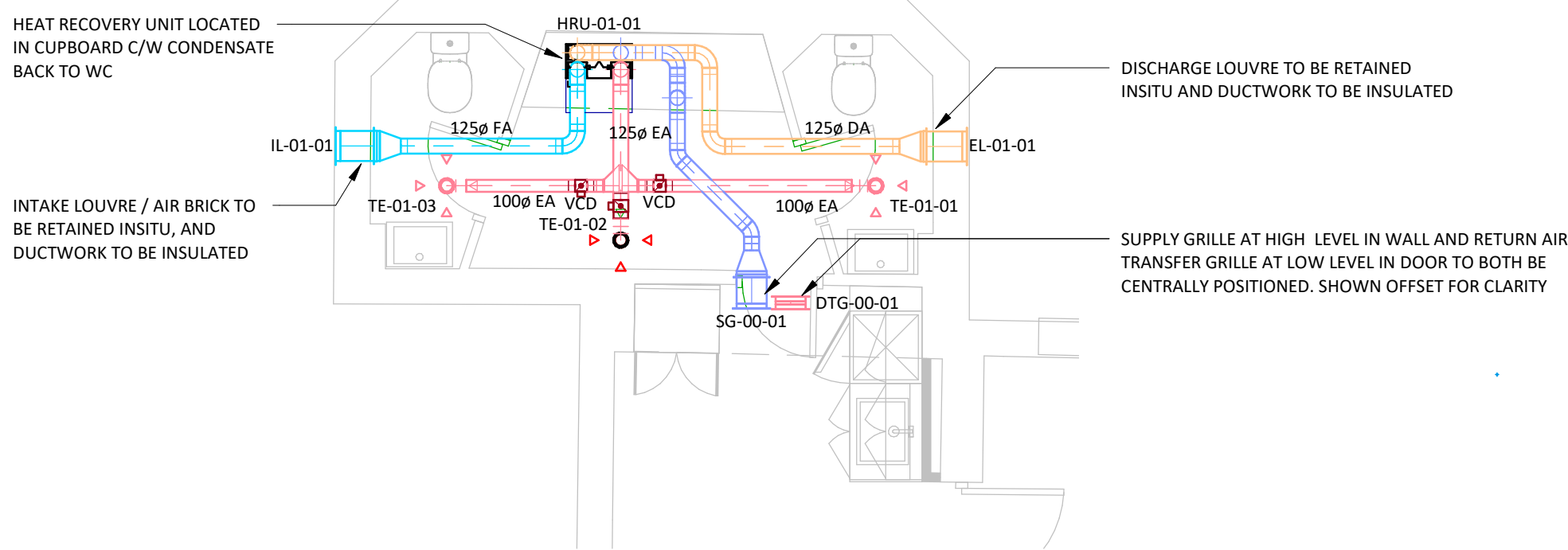
Title
MECHANICAL SERVICES GROUND FLOOR

Drawing No	Revision
317522-CEL-XX-00-DR-M-5001	PD4

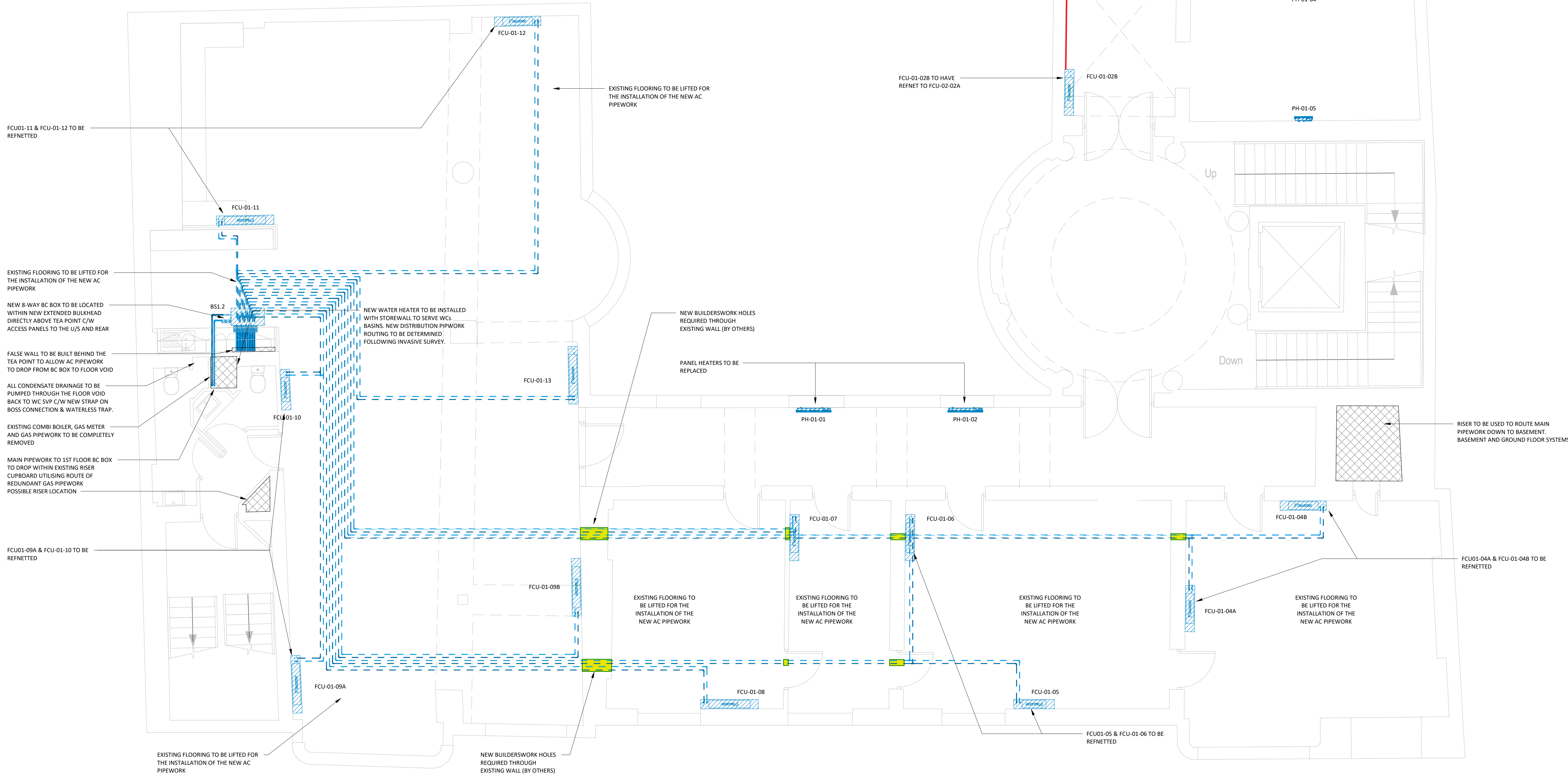
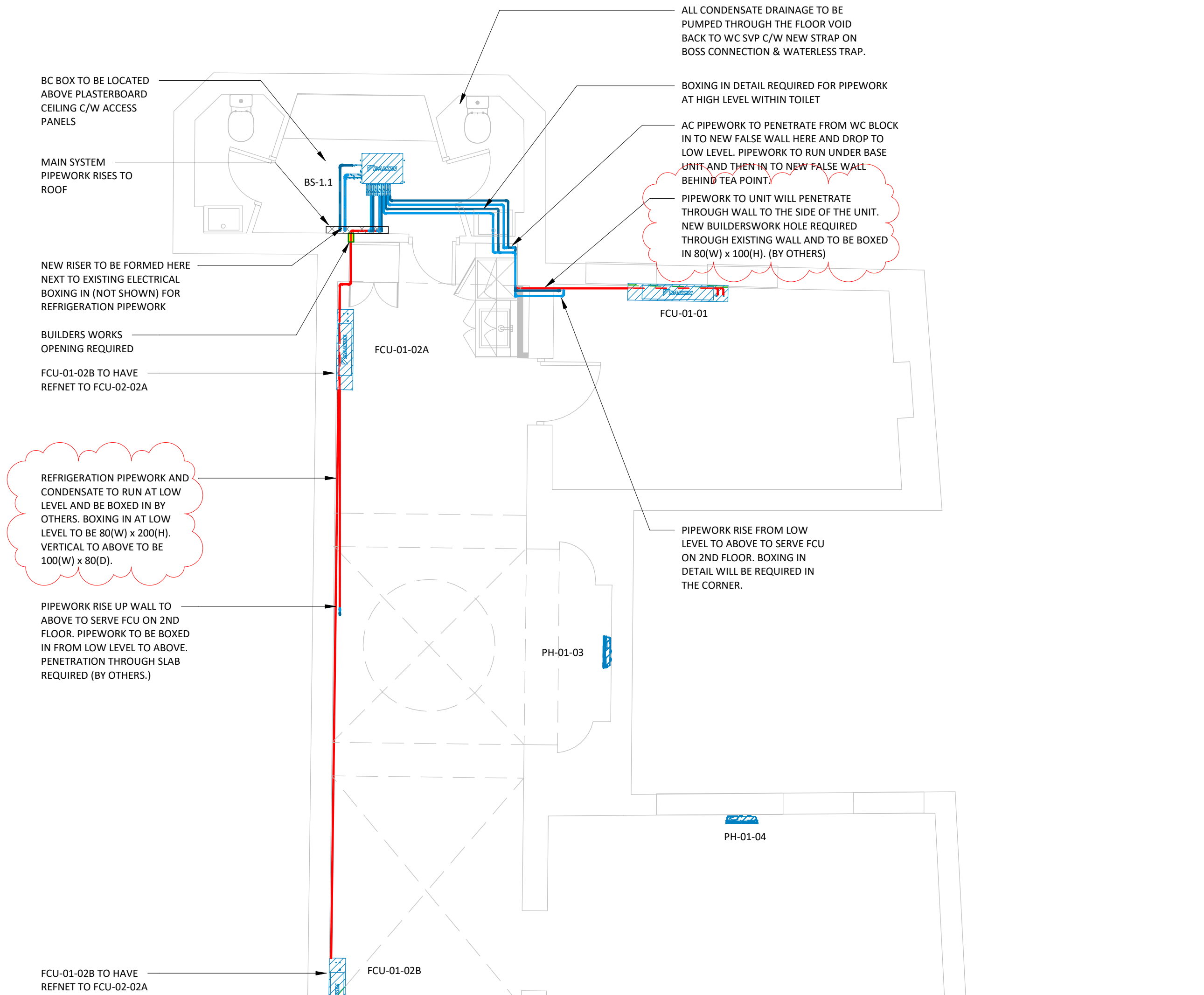
This drawing is confidential and is the copyright property of the company. It must not be disclosed, loaned or copied without written permission.



Mechanical Equipment Schedule - 01 First Floor			
TagNumber	Manufacturer	Type	Type Comments
Indoor unit			
FCU-01-01	Daikin Europe N.V. FXLQ25p2veb	Indoor unit	
FCU-01-02A	Daikin Europe N.V. FXLQ40p2veb	Indoor unit	
FCU-01-02B	Daikin Europe N.V. FXLQ40p2veb	Indoor unit	
FCU-01-04A	Daikin Europe N.V. FXLQ40p2veb	Indoor unit	
FCU-01-04B	Daikin Europe N.V. FXLQ40p2veb	Indoor unit	
FCU-01-05	Daikin Europe N.V. FXLQ25p2veb	Indoor unit	
FCU-01-06	Daikin Europe N.V. FXLQ25p2veb	Indoor unit	
FCU-01-07	Daikin Europe N.V. FXLQ33p2veb	Indoor unit	
FCU-01-08	Daikin Europe N.V. FXLQ63p2veb	Indoor unit	
FCU-01-09A	Daikin Europe N.V. FXLQ63p2veb	Indoor unit	
FCU-01-09B	Daikin Europe N.V. FXLQ63p2veb	Indoor unit	
FCU-01-10	Daikin Europe N.V. FXLQ25p2veb	Indoor unit	
FCU-01-11	Daikin Europe N.V. FXLQ63p2veb	Indoor unit	
FCU-01-12	Daikin Europe N.V. FXLQ40p2veb	Indoor unit	
FCU-01-13	Daikin Europe N.V. FXLQ63p2veb	Indoor unit	



01 - First Floor - Vent
1 : 50



- NOTES:
- SPLIT SYSTEMS NOT REQUIRED AT ALL ON THIS FLOOR.
 - PIPEWORK INSTALLATION ROUTES ARE ALL DEPENDENT ON WHETHER THIRDAWAY WILL LIFT UP THE EXISTING FLOOR.
 - WHERE WE BELIEVE THE FLOORING CANNOT BE LIFTED DUE TO IT BEING A MARBLE FINISH ALL PIPEWORK WILL BE ROUTED AROUND THE PERIMETER WALLS AND WILL NEED TO BE BOXED IN. WE HAVE IDENTIFIED THESE LOCATIONS ON THE DRAWING.
 - PUMPED CONDENSATE DRAINAGE TO BE RUN WITH REFRIGERATION PIPEWORK
- LEGEND
- PIPEWORK AT LOW LEVEL TO BE BOXED IN (BY OTHERS)
 - PIPEWORK AT HIGH LEVEL / WITHIN CEILING VOID
 - PIPEWORK WITH FLOOR VOID.
 - POSSIBLE RISE LOCATION
 - BUILDERS WORK OPENING IN WALL

Revision Number	Revision Description	Revision Date
P05	Revised To Suit Comments. Re-issued For Approval.	13.04.22
P04	Drawings Issued For Approval	07.04.22
P03	Revised To Suit Site Survey And Comments	31.00.22
P02	FCU omitted.	14.03.22
P01	For Approval.	10.03.22

Revision Number	Revision Description	Revision Date
Revision Schedule		

Related Specification
This drawing is to be read in conjunction with specification

Related Drawings



Towers Point,
Towers Business Park,
Rugeley, Staffordshire
WS15 1UN
T: 0203 301 5803
cad@celsius-group.co.uk

Scale 1 : 50@A0	Date 13.04.22
--------------------	------------------

Designed RB	CAD JA	Checked RB
----------------	-----------	---------------

Client
Dthree

Site Location
Holborn Town Hall
193 - 197 High Holborn,
London
WC1V 7BD

Title
MECHANICAL SERVICES FIRST FLOOR

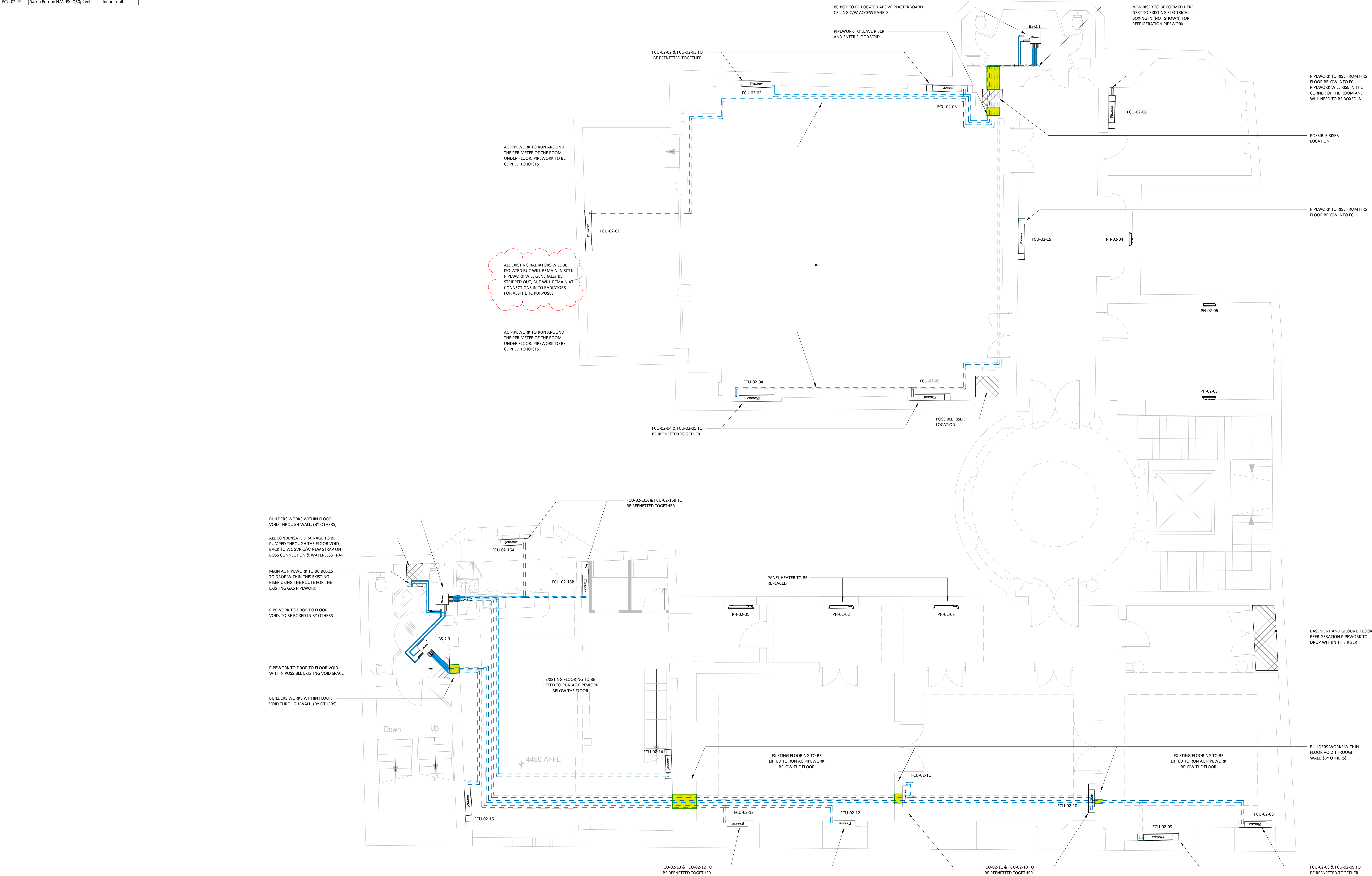
Drawing No 317522-CEL-XX-01-DR-M-5001	Revision P05
--	-----------------

This drawing is confidential and is the copyright property of the company. It must not be disclosed, loaned or copied without written permission.



Autodesk Docs/317522 - Dthree - Town Hall Holborn/317522-CEL-XX-XX-M3-M-0001.rvt

Mechanical Equipment schedule - 02 Second Floor				
TagNumber	Manufacturer	Type	Type Comments	
Indoor unit				
FCU-02-01	Daikin Europe N.V.	FALQ632web	Indoor unit	
FCU-02-02	Daikin Europe N.V.	FALQ502web	Indoor unit	
FCU-02-03	Daikin Europe N.V.	FALQ502web	Indoor unit	
FCU-02-04	Daikin Europe N.V.	FALQ502web	Indoor unit	
FCU-02-05	Daikin Europe N.V.	FALQ502web	Indoor unit	
FCU-02-06	Daikin Europe N.V.	FALQ402web	Indoor unit	
FCU-02-08	Daikin Europe N.V.	FALQ402web	Indoor unit	
FCU-02-09	Daikin Europe N.V.	FALQ502web	Indoor unit	
FCU-02-10	Daikin Europe N.V.	FALQ252web	Indoor unit	
FCU-02-11	Daikin Europe N.V.	FALQ322web	Indoor unit	
FCU-02-12	Daikin Europe N.V.	FALQ322web	Indoor unit	
FCU-02-13	Daikin Europe N.V.	FALQ322web	Indoor unit	
FCU-02-14	Daikin Europe N.V.	FALQ252web	Indoor unit	
FCU-02-15	Daikin Europe N.V.	FALQ322web	Indoor unit	
FCU-02-16A	Daikin Europe N.V.	FALQ402web	Indoor unit	
FCU-02-16B	Daikin Europe N.V.	FALQ402web	Indoor unit	
FCU-02-19	Daikin Europe N.V.	FALQ502web	Indoor unit	



- NOTES:
- PUMPED CONDENSATE DRAINAGE TO BE RUN WITH REFRIGERATION PIPEWORK.
 - NO ALLOWANCE FOR MODIFICATIONS ON THE VENTILATION FOR THIS FLOOR. VENTILATION TO BE SURVEYED AND VALIDATED ONCE ON SITE AND ACCESSIBLE.

LEGEND

- PIPEWORK AT LOW LEVEL TO BE BOXED IN (BY OTHERS)
- PIPEWORK AT HIGH LEVEL / WITHIN CEILING VOID
- PIPEWORK WITH FLOOR VOID.
- POSSIBLE RISER LOCATION
- BUILDERS WORK OPENING IN WALL

PD4	Revised To Suit Comments. Re-issued For Approval.	13.04.22
PD3	Drawings Issued For Approval	07.04.22
PD2	Revised To Suit Site Survey And Comments For Approval.	31.00.22
PD1		10.03.22

Revision Number	Revision Description	Revision Date
Revision Schedule		

Related Specification
This drawing is to be read in conjunction with specification

Related Drawings



Towers Point,
Towers Business Park,
Rugeley, Staffordshire
WS15 1UN
T: 0203 301 5803
cad@celsius-group.co.uk

Scale 1 : 50@A0	Date 13.04.22
--------------------	------------------

Designed RB	CAD JA	Checked RB
----------------	-----------	---------------

Client
Dthree

Site Location
Holborn Town Hall
193 - 197 High Holborn,
London
WC1V 7BD

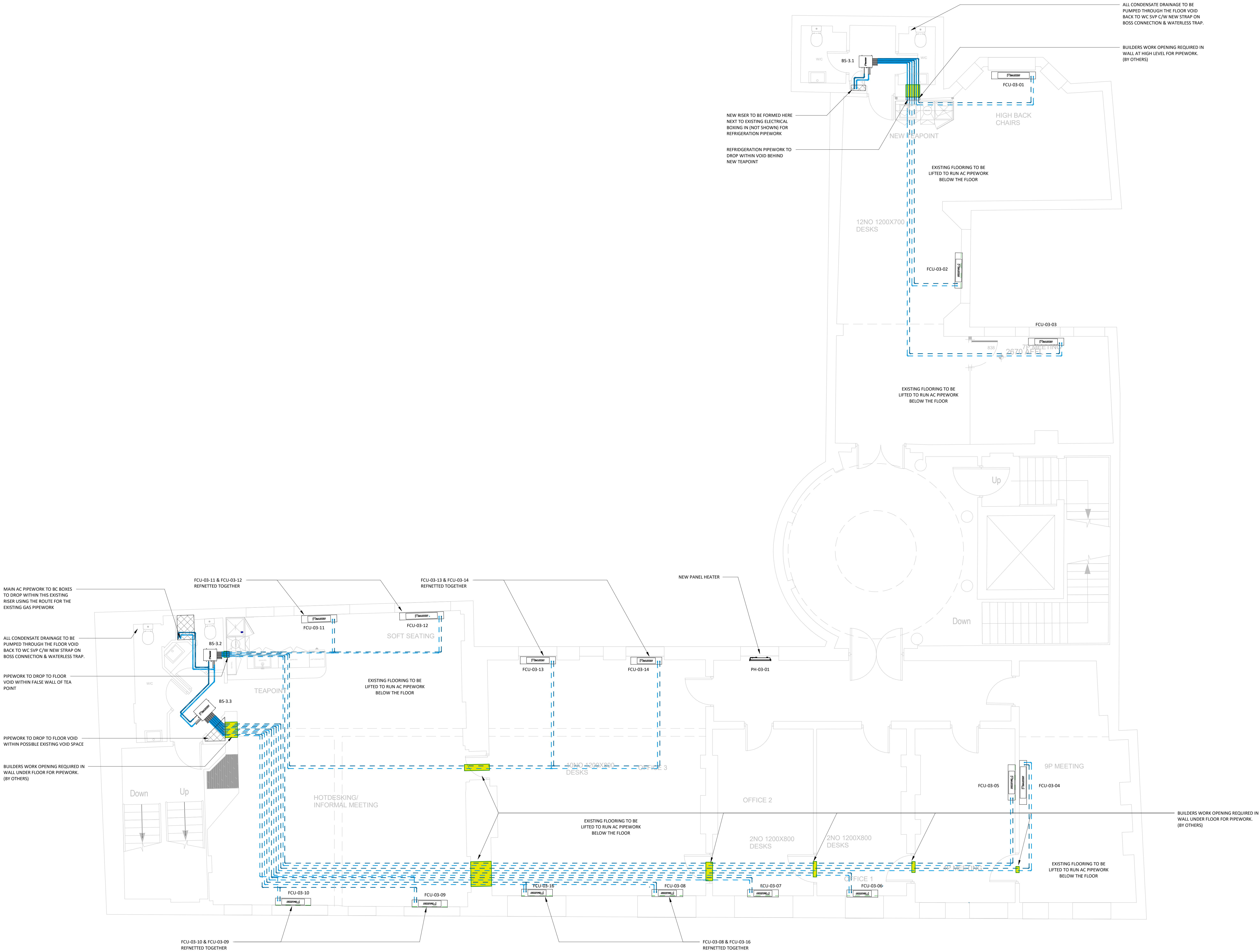
Title
MECHANICAL SERVICES SECOND FLOOR

Drawing No 317522-CEL-XX-02-DR-M-5001	Revision PD4
--	-----------------

This drawing is confidential and is the copyright property of the company. It must not be disclosed, loaned or copied without written permission.



Mechanical Equipment Schedule - 03 Third Floor				
TagNumber	Manufacturer	Type	Type Comments	
Indoor unit				
FCU-03-01	Daikin Europe N.V.	FXLQ63p2vnb	Indoor unit	
FCU-03-02	Daikin Europe N.V.	FXLQ40p2vnb	Indoor unit	
FCU-03-03	Daikin Europe N.V.	FXLQ40p2vnb	Indoor unit	
FCU-03-04	Daikin Europe N.V.	FXLQ50p2vnb	Indoor unit	
FCU-03-05	Daikin Europe N.V.	FXLQ32p2vnb	Indoor unit	
FCU-03-06	Daikin Europe N.V.	FXLQ30p2vnb	Indoor unit	
FCU-03-07	Daikin Europe N.V.	FXLQ20p2vnb	Indoor unit	
FCU-03-08	Daikin Europe N.V.	FXLQ25p2vnb	Indoor unit	
FCU-03-09	Daikin Europe N.V.	FXLQ32p2vnb	Indoor unit	
FCU-03-10	Daikin Europe N.V.	FXLQ40p2vnb	Indoor unit	
FCU-03-11	Daikin Europe N.V.	FXLQ40p2vnb	Indoor unit	
FCU-03-12	Daikin Europe N.V.	FXLQ50p2vnb	Indoor unit	
FCU-03-13	Daikin Europe N.V.	FXLQ32p2vnb	Indoor unit	
FCU-03-14	Daikin Europe N.V.	FXLQ32p2vnb	Indoor unit	
FCU-03-16	Daikin Europe N.V.	FXLQ32p2vnb	Indoor unit	



- NOTES:
- ALL CONDENSATE TO BE PUMPED AND RUN WITH REFRIGERATION PIPEWORK UNDER THE FLOOR TO A LOCAL SVP IN THE WC BLOCK
 - NO ALLOWANCE FOR MODIFICATIONS ON THE VENTILATION FOR THIS FLOOR. VENTILATION TO BE SURVEYED AND VALIDATED ONCE ON SITE AND ACCESSIBLE.
- LEGEND
- PIPEWORK AT LOW LEVEL TO BE BOXED IN (BY OTHERS)
 - PIPEWORK AT HIGH LEVEL / WITHIN CEILING VOID
 - PIPEWORK WITH FLOOR VOID.
 - POSSIBLE RISE LOCATION
 - BUILDERS WORK OPENING IN WALL

P03	Drawings Issued For Approval	07.04.22
P02	Revised To Suit Site Survey And Comments	31.00.22
P01	For Approval.	10.03.22

Revision Number	Revision Description	Revision Date
Revision Schedule		

Related Specification
This drawing is to be read in conjunction with specification

Related Drawings



Towers Point,
Towers Business Park,
Rugeley, Staffordshire
WS15 1UN
T: 0203 301 5803
cad@celsius-group.co.uk

Scale	Date	
1 : 50@A0	07.04.22	

Designed	CAD	Checked
RB	JA	RB

Client
Dthree

Site Location
Holborn Town Hall
193 - 197 High Holborn,
London
WC1V 7BD

Title
MECHANICAL SERVICES THIRD FLOOR

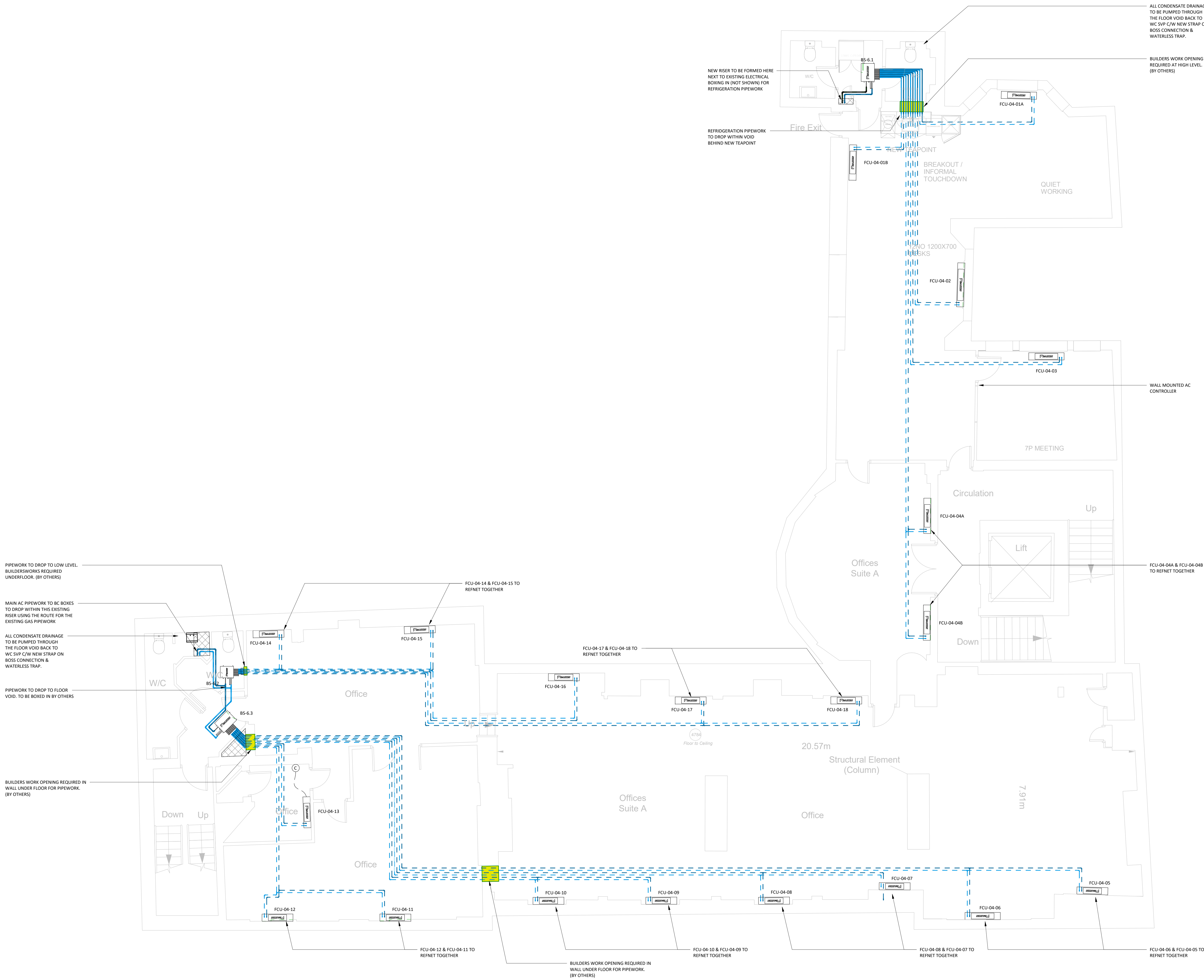
Drawing No	Revision
317522-CEL-XX-03-DR-M-5001	P03

This drawing is confidential and is the copyright property of the company. It must not be disclosed, loaned or copied without written permission.



Mechanical Equipment Schedule - 04 Fourth Floor			
TagNumber	Manufacturer	Type	Type Comments



Influor unit			
FCU-04-01A	Daklin Europe N° 1	FXLQ0402vzb	Indoor unit
FCU-04-02	Daklin Europe N° 2	FXLQ0402vzb	Indoor unit
FCU-04-03	Daklin Europe N° 3	FXLQ0402vzb	Indoor unit
FCU-04-04A	Daklin Europe N° 4	FXLQ0402vzb	Indoor unit
FCU-04-05	Daklin Europe N° 5	FXLQ0402vzb	Indoor unit
FCU-04-06	Daklin Europe N° 6	FXLQ032pzb	Indoor unit
FCU-04-07	Daklin Europe N° 7	FXLQ0402vzb	Indoor unit
FCU-04-08	Daklin Europe N° 8	FXLQ0402vzb	Indoor unit
FCU-04-09	Daklin Europe N° 9	FXLQ0402vzb	Indoor unit
FCU-04-10	Daklin Europe N° 10	FXLQ020pzb	Indoor unit
FCU-04-11	Daklin Europe N° 11	FXLQ025pzb	Indoor unit
FCU-04-12	Daklin Europe N° 12	FXLQ025pzb	Indoor unit
FCU-04-13	Daklin Europe N° 13	FXLQ020pzb	Indoor unit
FCU-04-14	Daklin Europe N° 14	FXLQ025pzb	Indoor unit
FCU-04-15	Daklin Europe N° 15	FXLQ025pzb	Indoor unit
FCU-04-16	Daklin Europe N° 16	FXLQ025pzb	Indoor unit
FCU-04-17	Daklin Europe N° 17	FXLQ025pzb	Indoor unit
FCU-04-18	Daklin Europe N° 18	FXLQ020pzb	Indoor unit



- NOTES:
- ALL CONDENSATE TO BE PUMPED AND RUN WITH REFRIGERATION PIPEWORK BACK TO SVP WITHIN WC BLOCK
 - NO ALLOWANCE FOR MODIFICATIONS ON THE VENTILATION FOR THIS FLOOR. VENTILATION TO BE SURVEYED AND VALIDATED ONCE ON SITE AND ACCESSIBLE.

LEGEND

- ===== PIPEWORK AT LOW LEVEL TO BE BOXED IN (BY OTHERS)
- ===== PIPEWORK AT HIGH LEVEL / WITHIN CEILING VOID
- ===== PIPEWORK WITH FLOOR VOID.

-  POSSIBLE RISE LOCATION
-  BUILDERS WORK OPENING IN WALL

P03	Drawings Issued For Approval	07.04.22
P02	Revised To Suit Site Survey And Comments	31.00.22
P01	For Approval.	10.03.22

Revision Number	Revision Description	Revision Date
Revision Schedule		

Related Specification
This drawing is to be read in conjunction
with specification:

Related Drawings



Towers Point,
Towers Business Park,
Rugeley, Staffordshire
WS15 1UN
T: 0203 301 5803
cad@celsius-group.co.uk

Scale 1 : 50@A0		Date 07.04.22	
Designed RB	CAD JA		Checked RB

Client
Dthree

Site Location
Holborn Town Hall
193 - 197 High Holborn,
London
WC1V 7BD

Title
MECHANICAL SERVICES FOURTH FLOOR

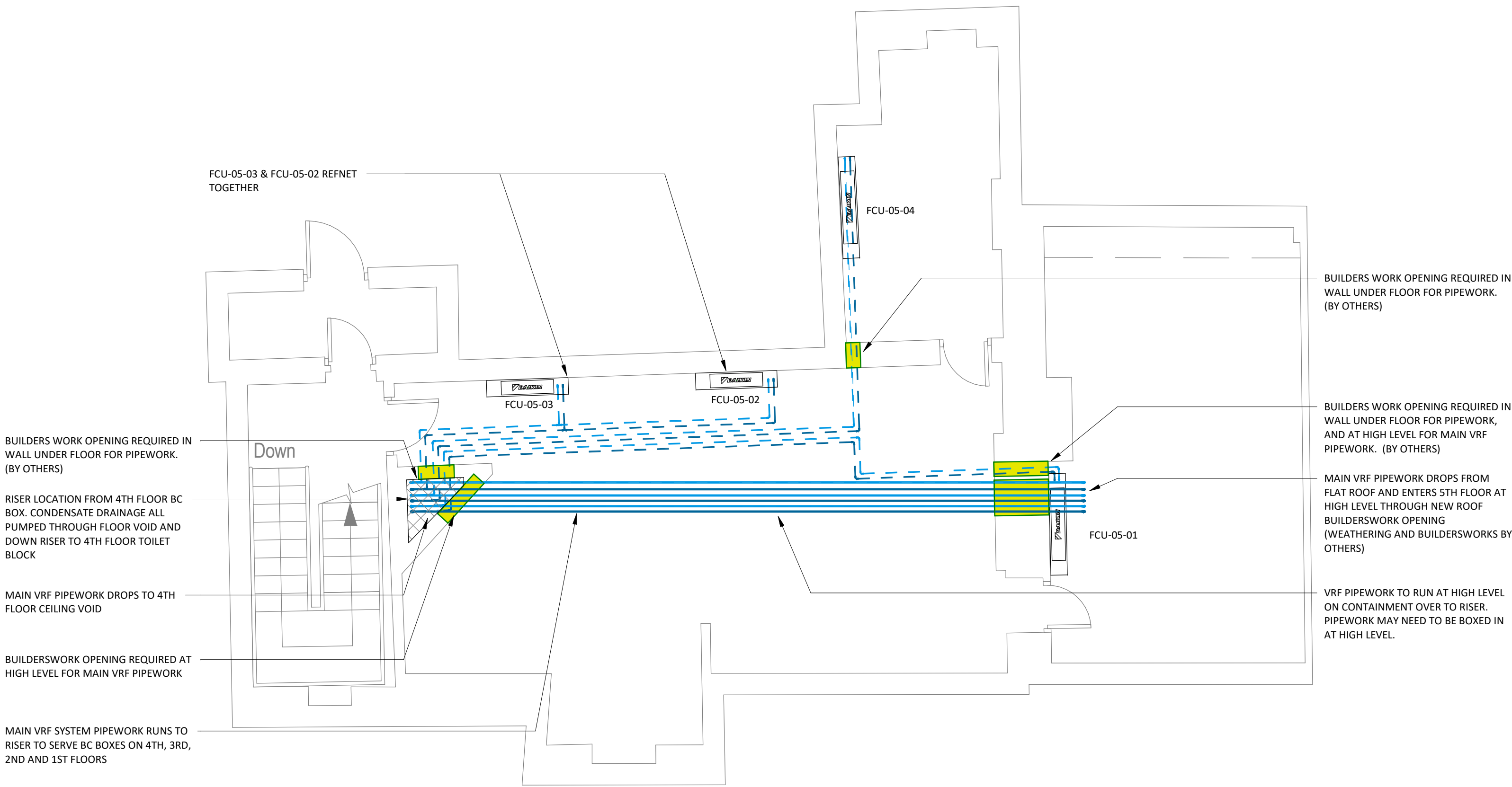
Drawing No	Revision
217522-CEL-XY-04-DB-M-5001	003

This drawing is confidential and is the copyright property of the company. It must not be disclosed, loaned or copied without written permission. ©



Mechanical Equipment Schedule - 05 Fifth Floor			
TagNumber	Manufacturer	Type	Type Comments

Indoor unit			
FCU-05-01	Daikin Europe N.V.	FXLQ50p2veb	Indoor unit
FCU-05-02	Daikin Europe N.V.	FXLQ40p2veb	Indoor unit
FCU-05-03	Daikin Europe N.V.	FXLQ40p2veb	Indoor unit
FCU-05-04	Daikin Europe N.V.	FXLQ50p2veb	Indoor unit



NOTES:

- PUMPED CONDENSATE DRAINAGE TO BE RUN WITH REFRIDGERATION PIPEWORK UNDER FLOOR, VIA BRAIDED HOSES BACK TO SVP WITHIN 4TH FLOOR WC BLOCK.
- NO ALLOWANCE FOR MODIFICATIONS ON THE VENTILATION FOR THIS FLOOR. VENTILATION TO BE SURVEYED AND VALIDATED ONCE ON SITE AND ACCESSIBLE.

LEGEND

PIPEWORK AT LOW LEVEL TO BE BOXED IN (BY OTHERS)

PIPEWORK AT HIGH LEVEL / WITHIN CEILING VOID

PIPEWORK WITH FLOOR VOID.

POSSIBLE RISE LOCATION

BUILDERS WORK OPENING IN WALL

P03	Drawings Issued For Approval	07.04.22
P02	Revised To Suit Site Survey And Comments	31.00.22
P01	For Approval.	10.03.22

Revision Number	Revision Description	Revision Date
Revision Schedule		
Related Specification		
This drawing is to be read in conjunction with specification:		
Related Drawings		

celsius

solutions ltd

Towers Point

Towers Business Park

Rugeley - Staffordshire

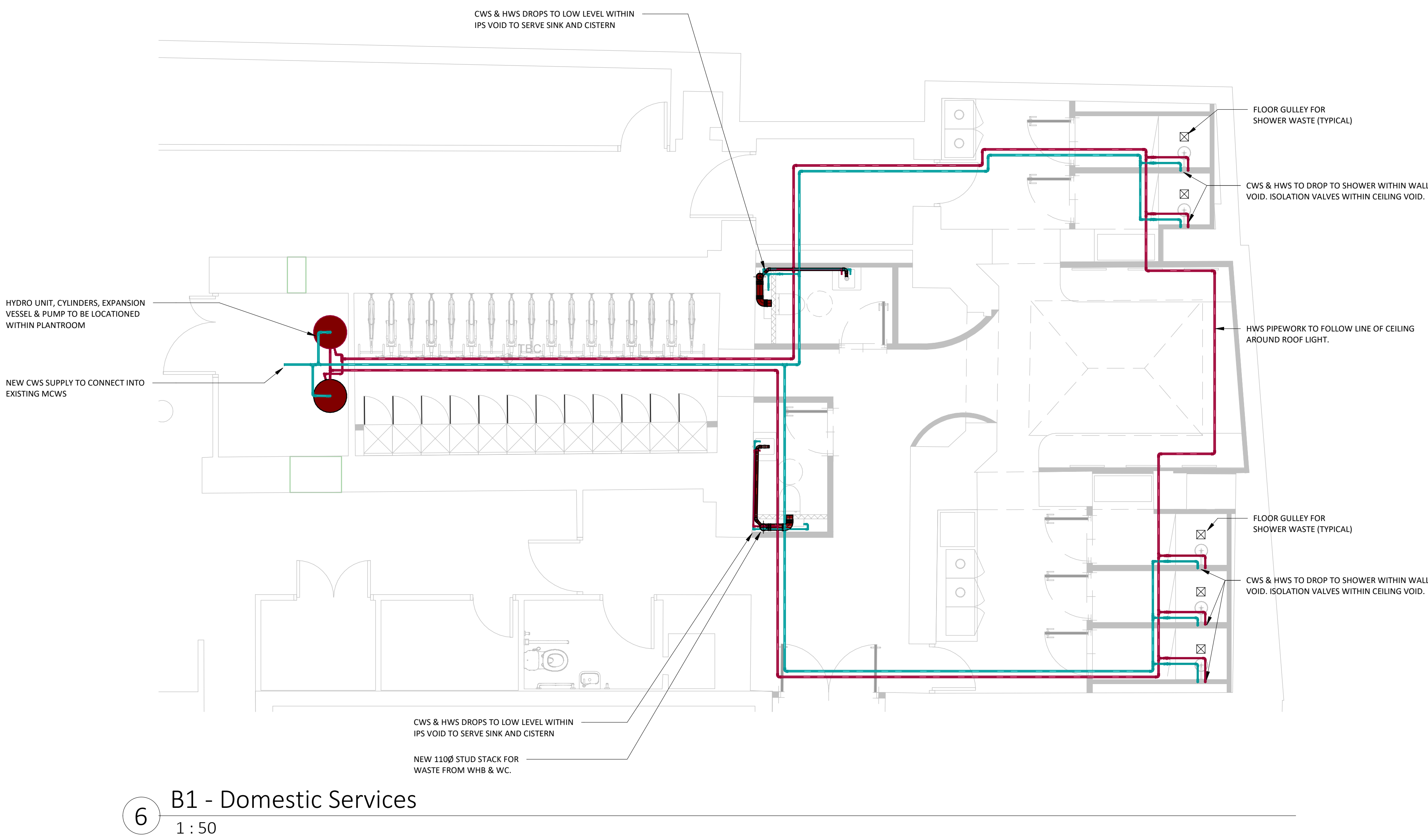
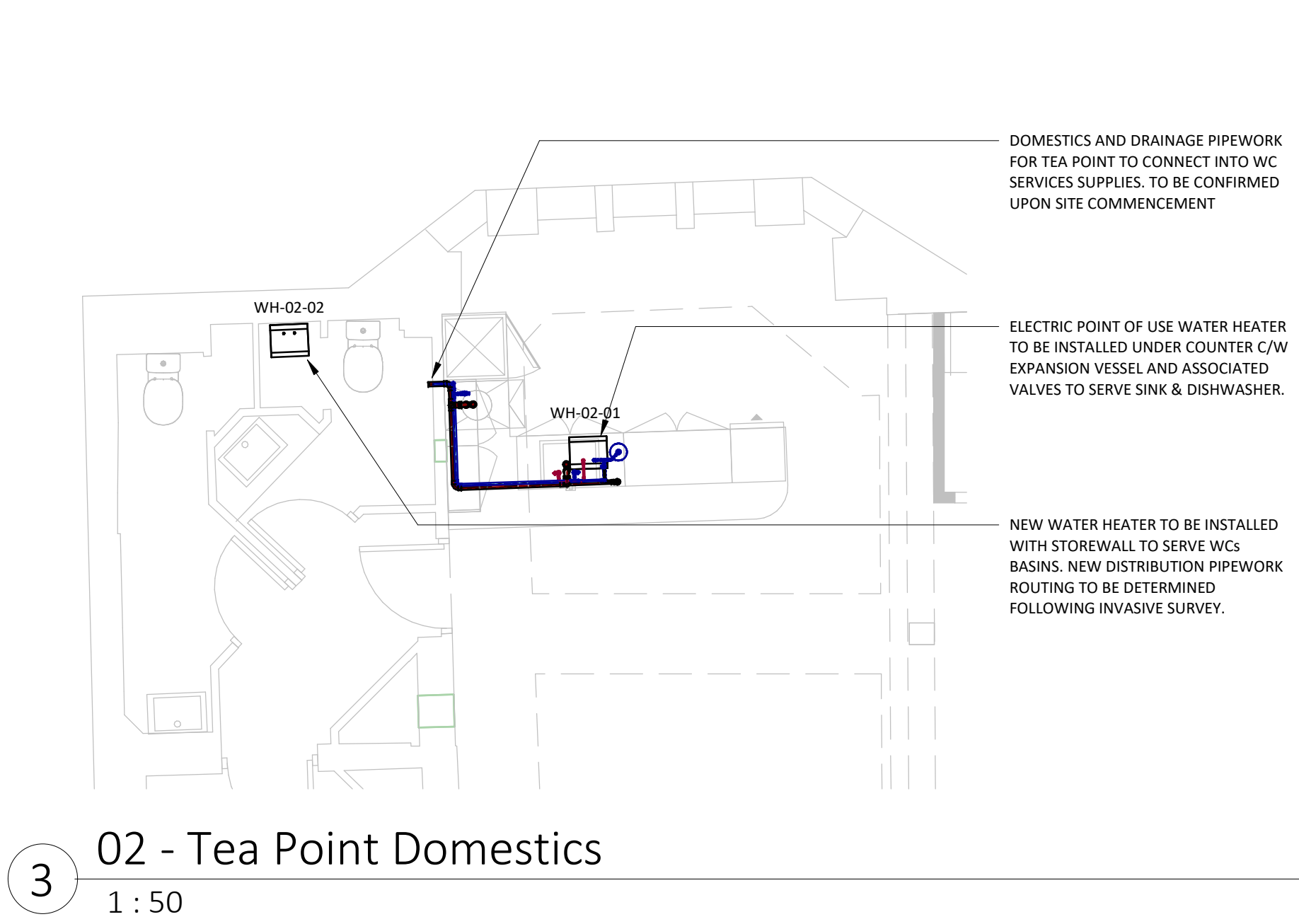
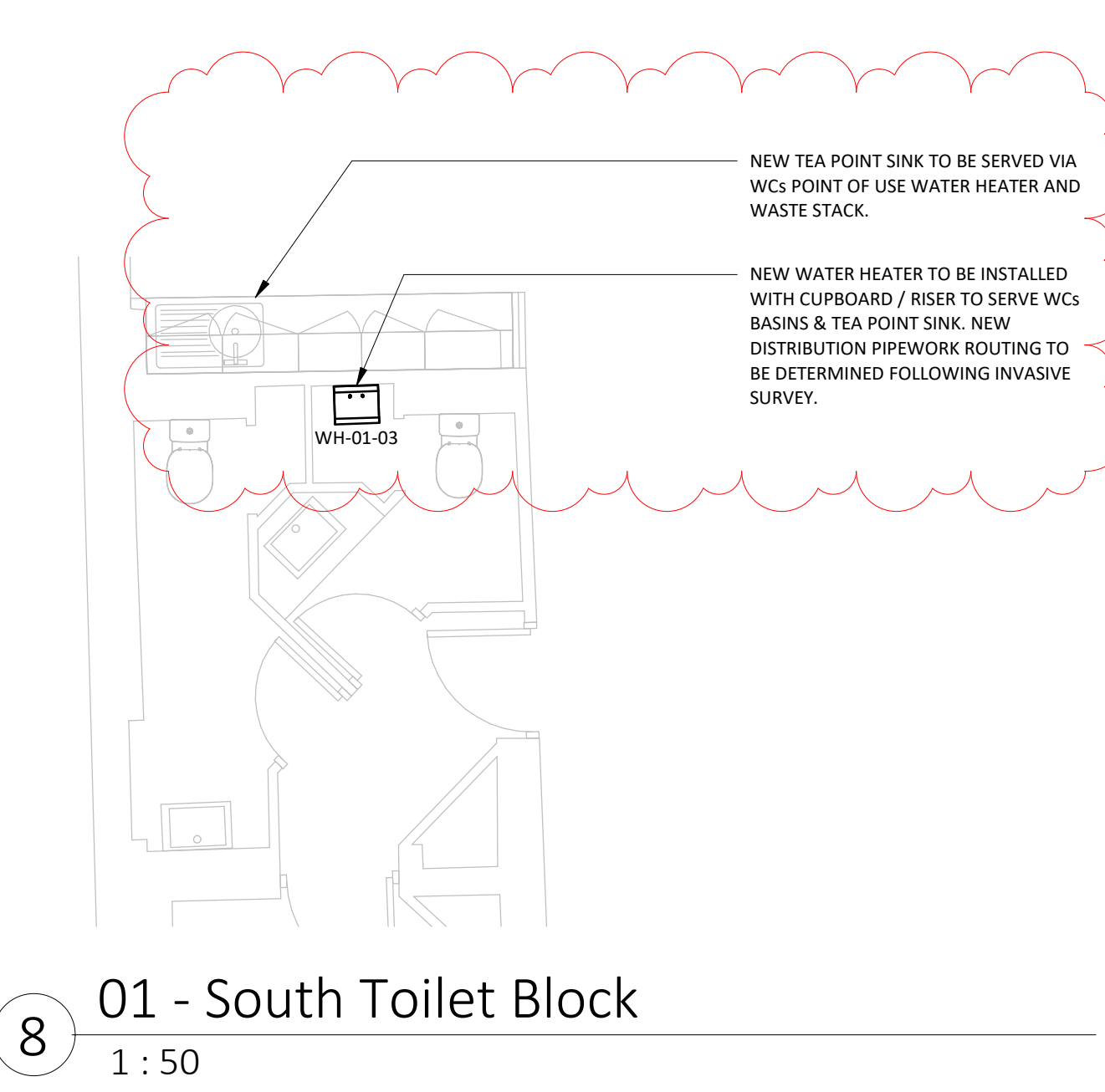
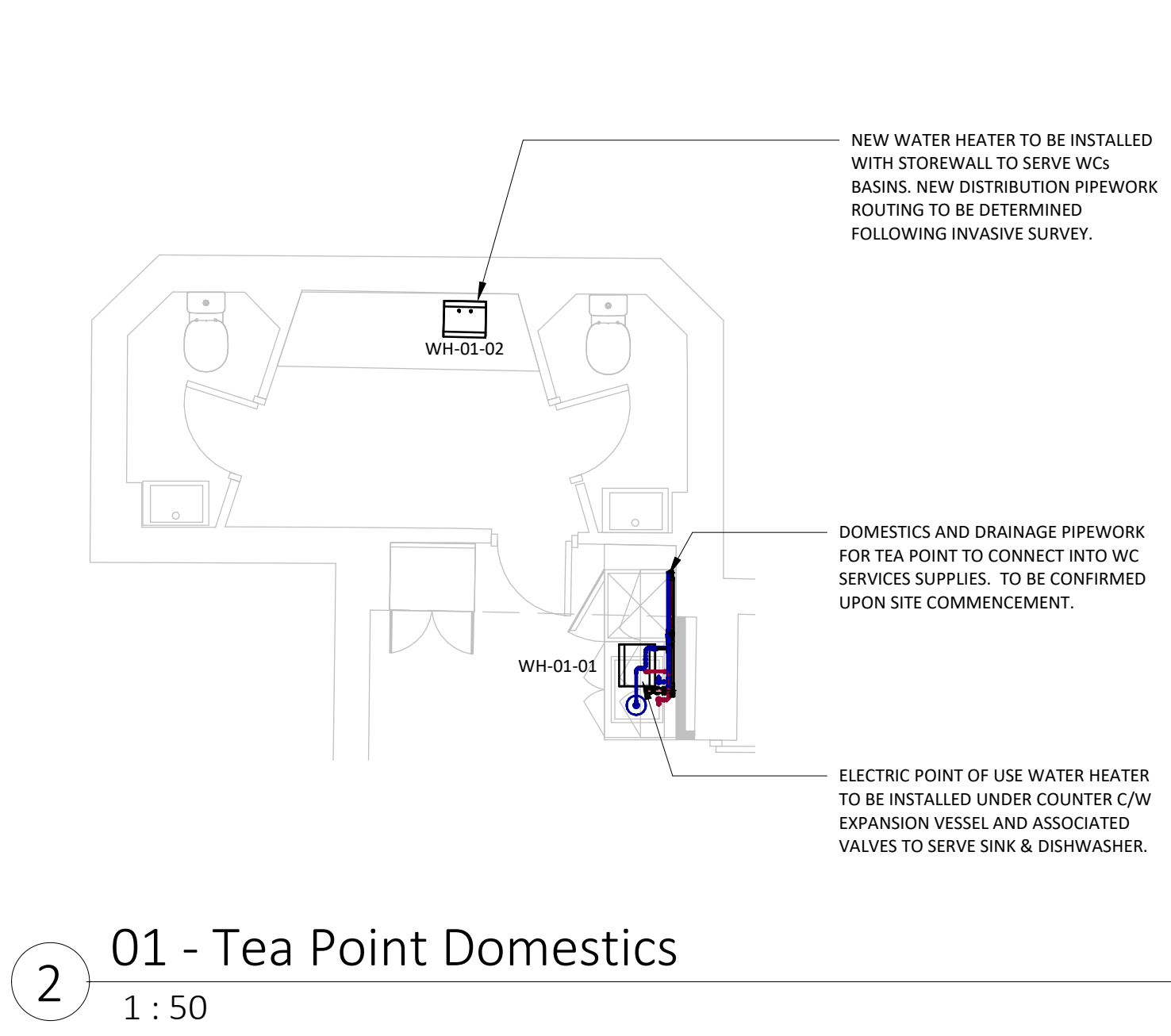
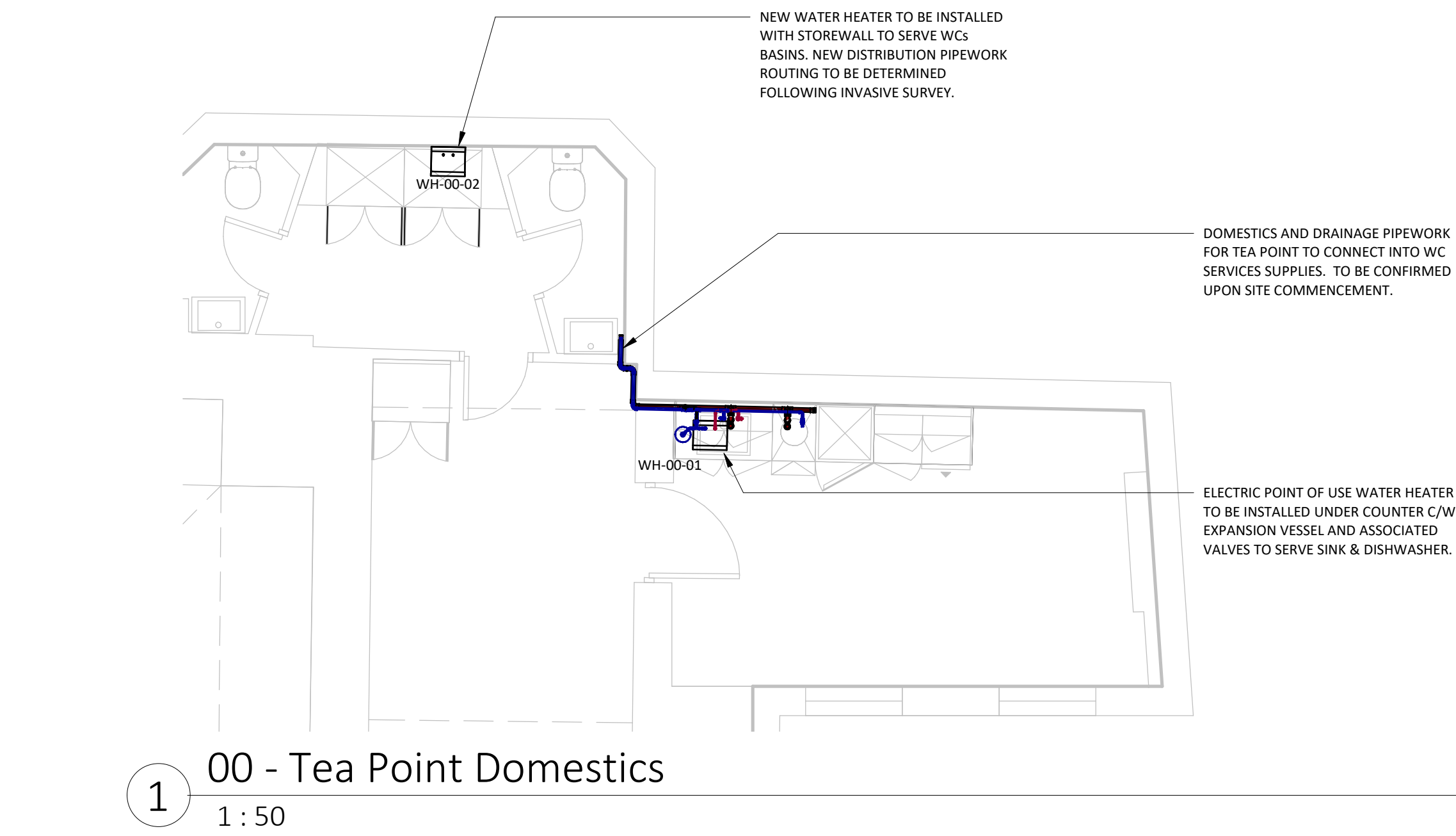
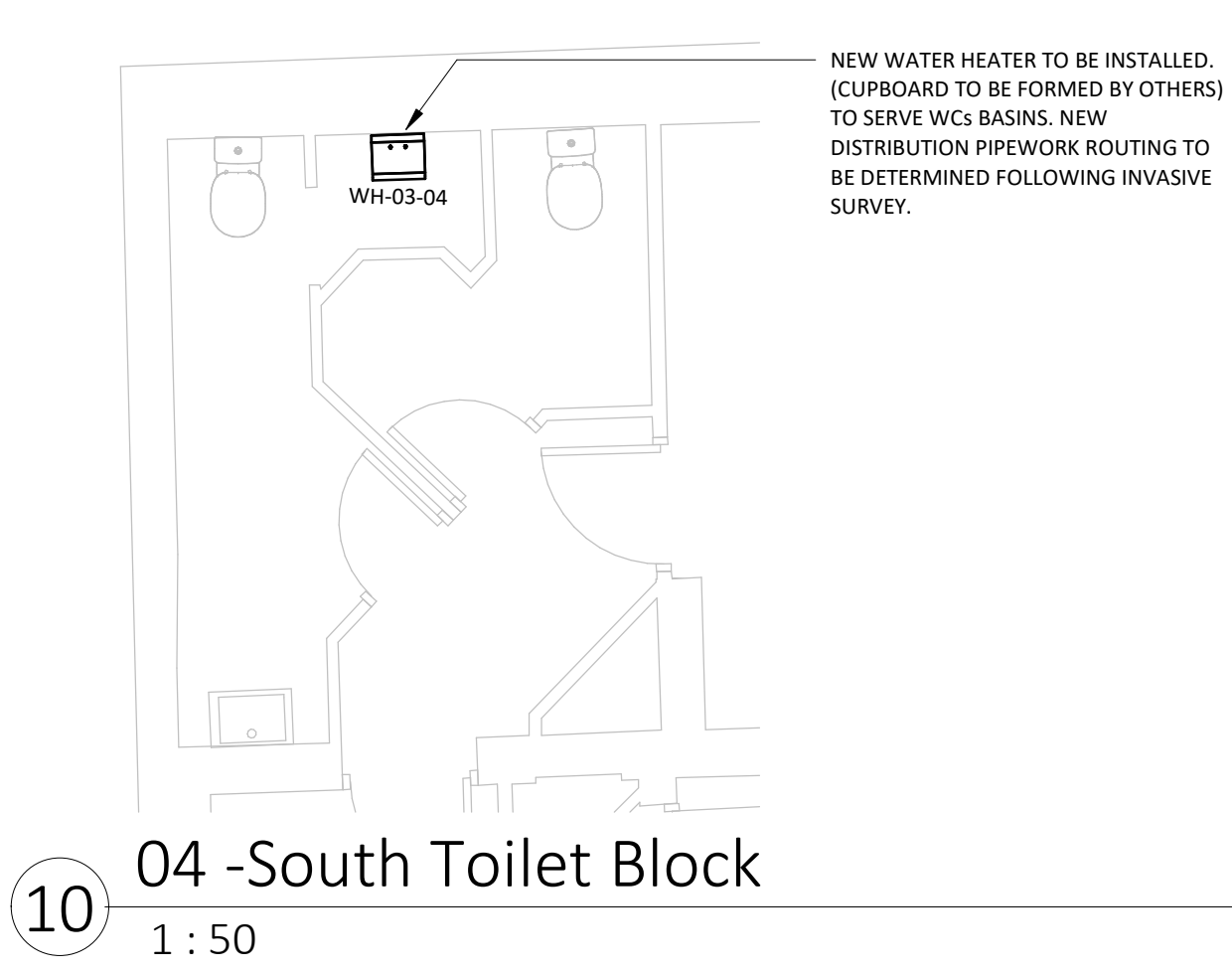
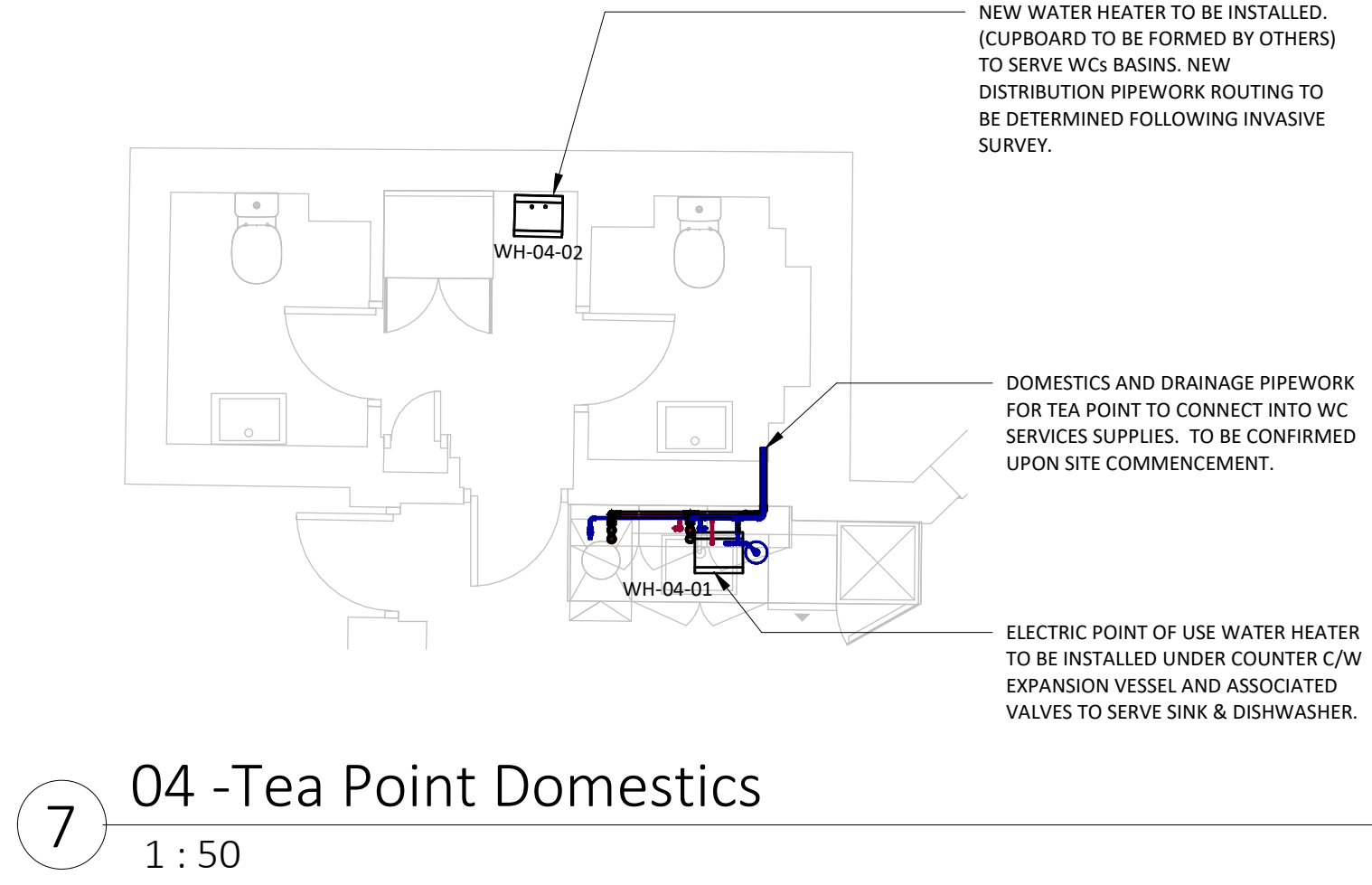
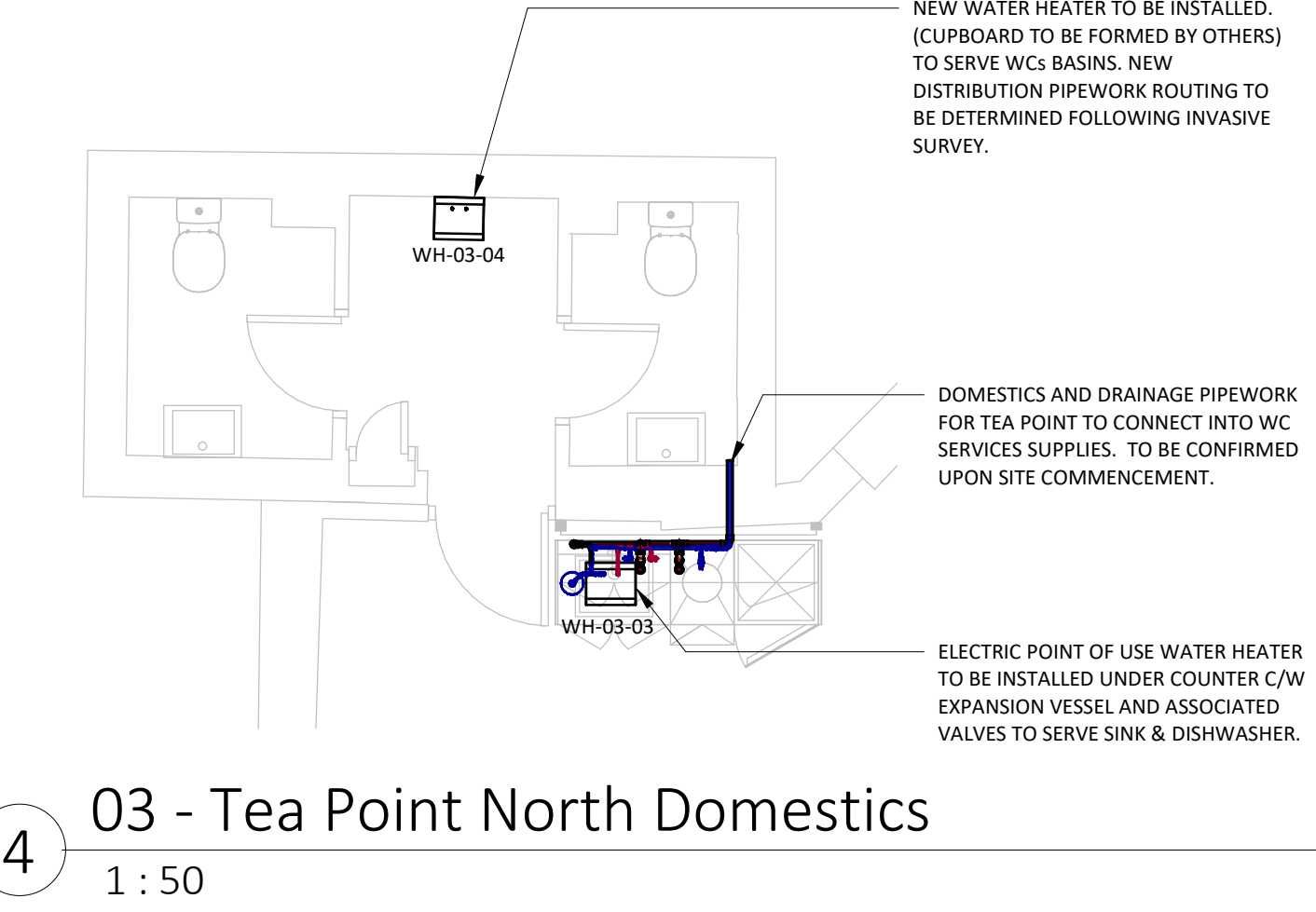
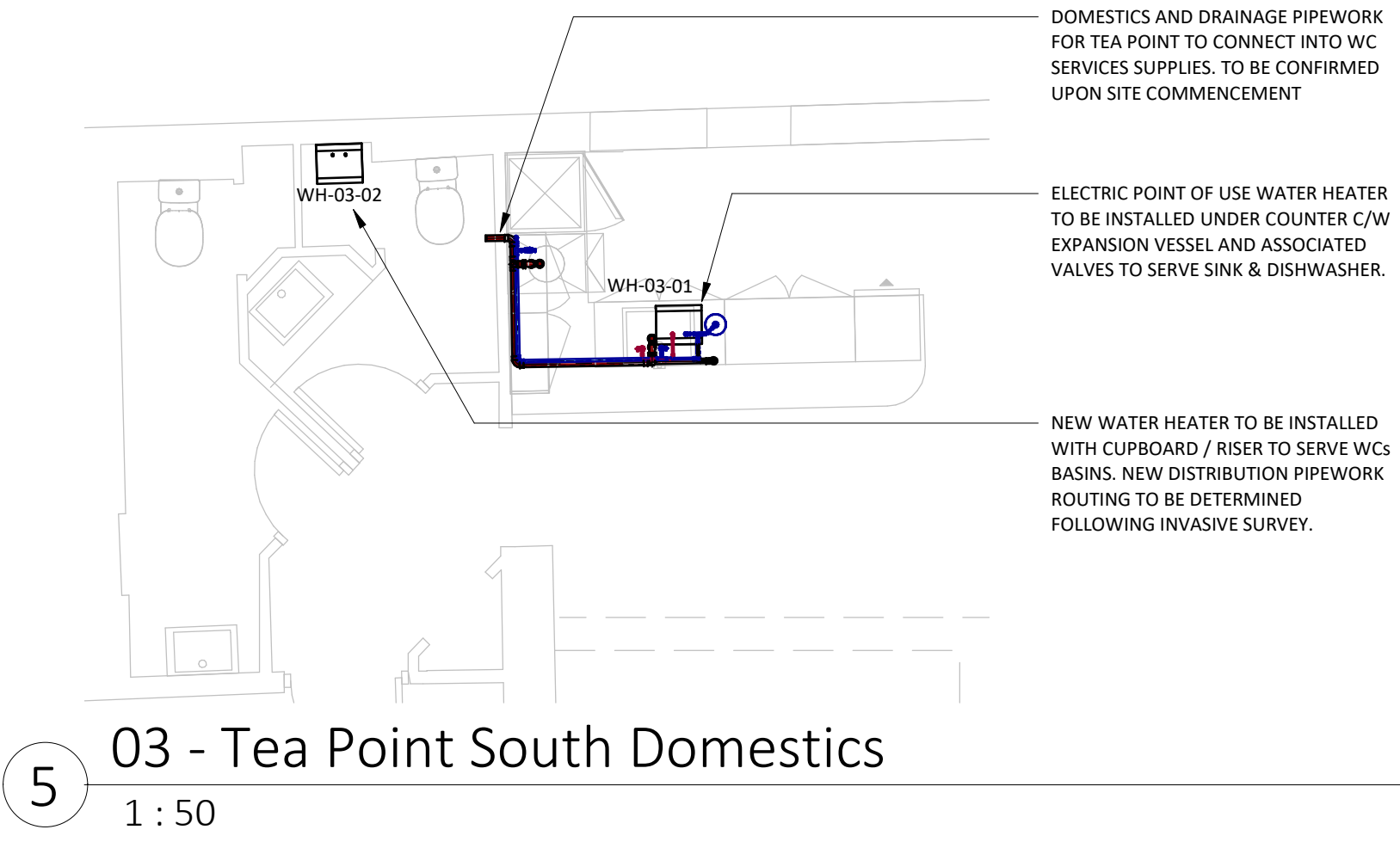
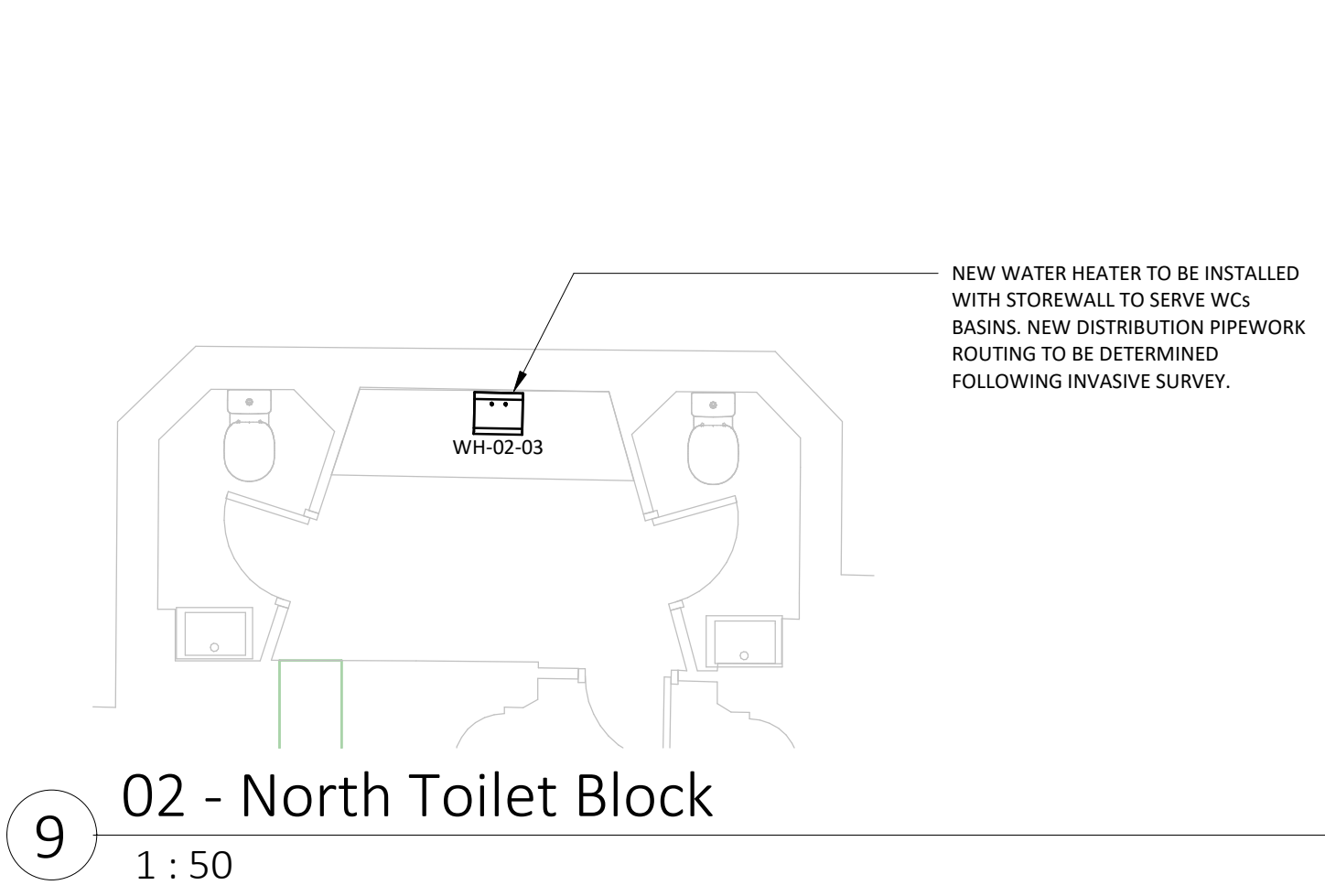
WS15 1UN

T: 0203 301 5803

cad@celsius-group.co.uk

Scale	Date	
1 : 50@A1	03/09/22	
Dsigned	CAD	Checked
RB	JA	RB
Client		
Dthree		
Site Location		
Holborn Town Hall		
193 - 197 High Holborn,		
London		
WC1V 7BD		
Title		
MECHANICAL SERVICES		
FIFTH FLOOR		
Drawing No	Revision	
317522-CEL-XX-05-DR-M-5001	P03	
This drawing is confidential and is the copyright property of the company. It must not be disclosed loaned or copied without written permission.		

08/04/2022 18:20:48Autodesk Docs://317522 - Dthree - Town Hall Holborn/317522-CEL-XX-XX-M3-M-0001.rvt



- NOTES:
1. ALL DIMENSIONS ARE IN MILLIMETRES UNLESS OTHERWISE STATED.
 2. DO NOT SCALE. IF IN DOUBT ASK.
 3. SETTING OUT OF LOW LEVEL PIPEWORK WITHIN CURBICLES TO BE DONE ON SITE TO SUIT SITE REQUIREMENTS.
 4. ALL LEVELS ARE TAKEN FROM FINISHED FLOOR LEVEL AND NOT STRUCTURAL SLAB LEVEL.
 5. ALL HOT AND COLD WATER SERVICES PIPEWORK TO BE CARRIED OUT UTILISING COPPER HALF HARD, BENDABLE TUBING TO BE BS EN 1057-R250 (CLASS 10, FITTINGS FOR COPPER OR CAST GUNMETAL CAPILLARY TYPE TO BS 864 PART 2 (LEAD FREE SOLID)) OR CAPILLARY TYPE TO BS EN 1254-2 OR BS 864 PART 2.
 6. ALL HOT AND COLD WATER SERVICES PIPEWORK SHALL BE FITTED AT CENTRES TO ENSURE THAT FULL AND PROPER APPLICATION OF THERMAL INSULATION CAN BE CARRIED OUT.
 7. AN ISOLATING VALVE SHALL BE FITTED ON EACH SERVICE AT EACH FITTING AND/OR RANGE OF FITTINGS. A REGULATING VALVE SHALL BE FITTED ON ALL HOT WATER SERVICES RETURN LINES.
 8. ALL HOT AND COLD WATER SERVICES PIPEWORK SHALL BE THERMALLY INSULATED TO BS 5422-2009.
 9. ALL PIPEWORK SHALL BE INDIVIDUALLY SUPPORTED BY MEANS OF SPLIT RINGS WITH SUITABLE LINER, THREADED DROP ROD AND COMMON LIGHTWEIGHT CHANNEL FIXED TO CONCRETE SLAB AND/OR CLEATED STEELWORK.
 10. ALL MECHANICAL SERVICES SHALL BE ARRANGED FOR TESTING AND COMMISSIONING IN ACCORDANCE WITH THE GUIDANCE GIVEN BY CIBSE COMMISSIONING CODES AND W894 COMMISSIONING GUIDES. 3 COPIES OF OPERATING AND MAINTENANCE MANUALS WILL BE PROVIDED AND HANDED OVER TO THE BUILDING OCCUPIER.
 11. ALL CONCEALED AND/OR PLANTROOM LOCATED HOT AND COLD WATER SERVICES PIPEWORK WILL BE THERMALLY INSULATED IN ACCORDANCE WITH THE REQUIREMENTS AND RECOMMENDATIONS OF BS 5422-2009.
 12. DRAIN COCKS TO BE PROVIDED AT ALL LOW POINTS FOR DRAIN.
 13. ALL WCs, SHOWERS, TEA POINTS AND PLANTROOM TO HAVE LEAK DETECTION.
 14. SANITARYWARE IN ALL EXISTING TOILETS BLOCKS TO BE REPLACED WITH NEW.

P02	Revised To Suit Comments. Re-issued For Approval.	13.04.22
P01	Drawings Issued For Approval	07.04.22

Revision Number	Revision Description	Revision Date
Revision Schedule		

Related Specification
This drawing is to be read in conjunction with specification.

Related Drawings



Towers Point,
Towers Business Park,
Rugeley, Staffordshire
WS15 1UN
T: 0203 301 5803
cad@celsius-group.co.uk

Scale	1 : 50@A0	Date	13.04.22
-------	-----------	------	----------

Designed	CAD	Checked	MW
MW	IH		

Client	Dthree
--------	--------

Site Location
Holborn Town Hall
193 - 197 High Holborn,
London
WC1V 7BD

Title	DOMESTIC SERVICES LAYOUTS
-------	---------------------------

Drawing No	317522-CEL-XX-XX-DR-M-5001	Revision	P02
------------	----------------------------	----------	-----

This drawing is confidential and is the copyright property of the company. It must not be disclosed, loaned or copied without written permission.

