

METHOD STATEMENT FOR PILE FOUNDATIONS ON SITES AFFECTED BY TREES/TPO

1. The base area is laid out and the location agreed with the customer.
2. Areas beyond the tree canopy will be dug by hand to our standard depths which can vary depending on the make-up of the subsoil geology. The only difference being that the holes in a TPO protected area will be lined with a thick plastic waterproof membrane.
3. Holes under the tree canopy will also be dug by hand to not disturb any large root systems and if necessary, relocated to avoid a tap root.
4. All holes are then tampered down giving a flat bottom, so they can carry the designed load (typically 180 Kilo per pile). The plastic protective membrane is then inserted into the holes before the concrete is poured, this is a quick-setting concrete mix which goes off very rapidly - within 1 hour.
5. Care is taken to avoid spillage of our concrete mix/powder using protective membrane where necessary at the time of mixing.
6. The insulated flooring panels are then laid onto the concrete pad/pile system.

Fig 1 Standard piles/ pads

Fig 2 Tree/TPO Pads

Fig Example of a Base Layout

Fig 1

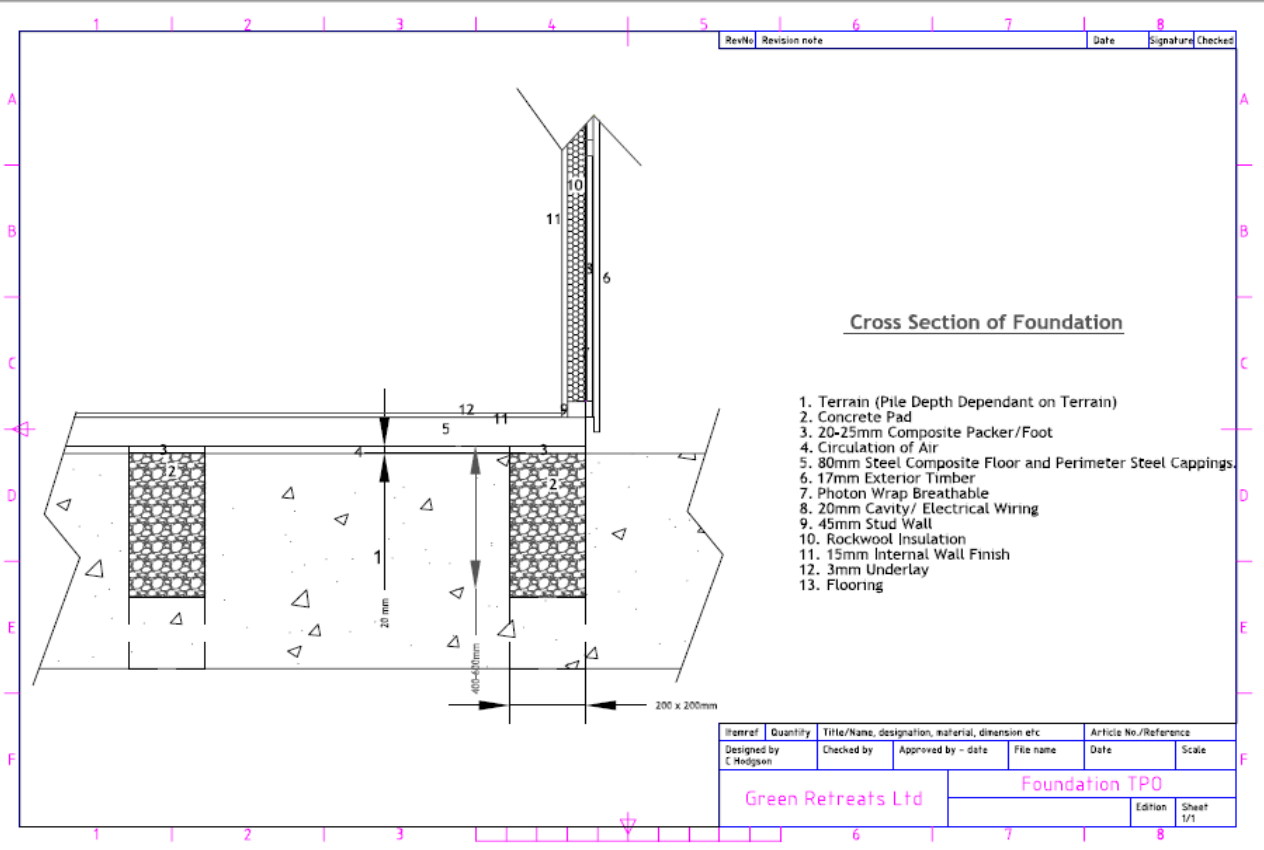


Fig 2

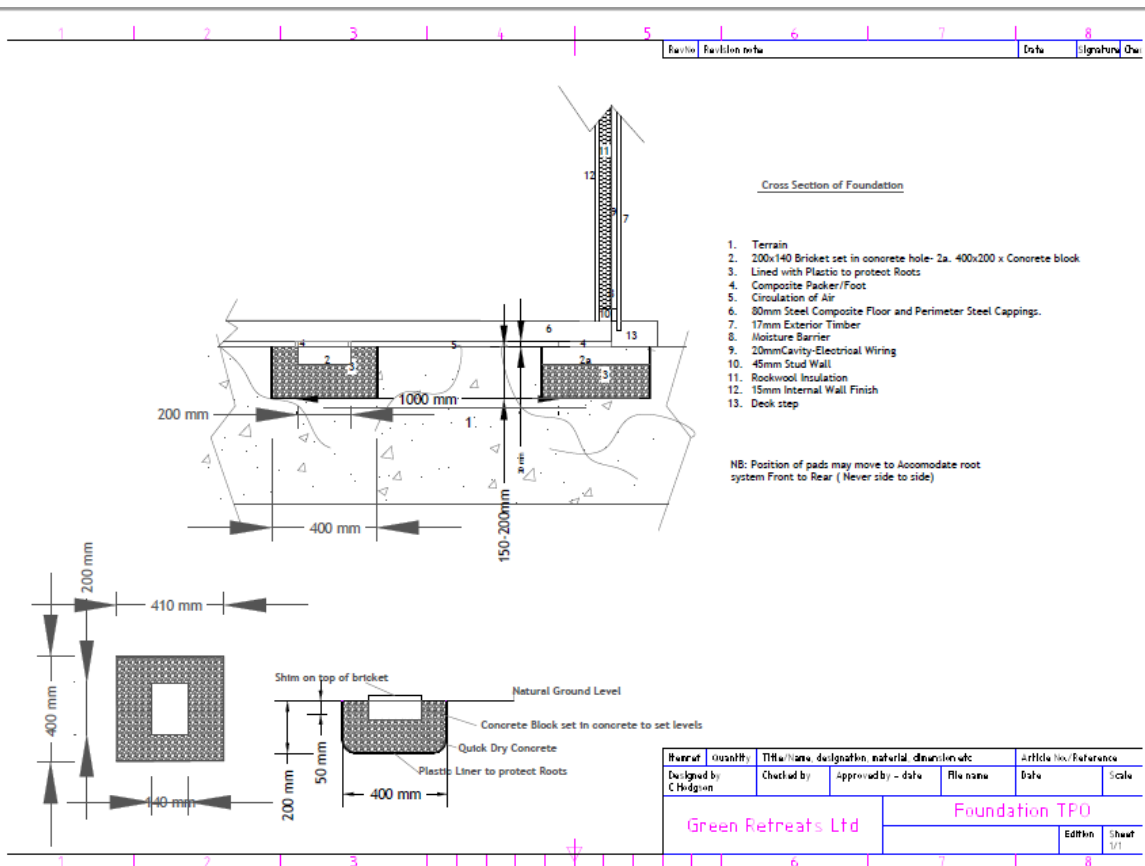


Fig 3

