

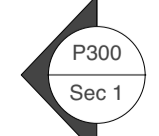
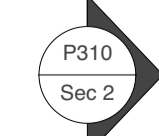
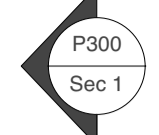
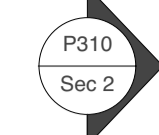
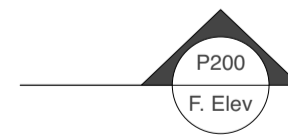
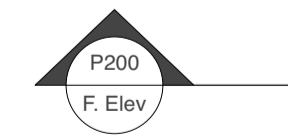
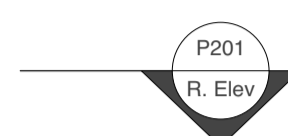
**General Notes**

- All dimensions to be verified on site
- To be read in conjunction with all relevant documents
- In the event of discrepancy notify the Architect immediately
- All steel structural elements to be finished with intumescent coating, 30 minutes fire resistance. For all structural elements and connection see SE drawings.
- This document is copyright of Hugh Cullum Architects Ltd

**Issue Status**

- SK Sketch
- D Design
- T Tender
- E Existing Condition
- P Permissions
- C Contract

rev	note	date	(drawn by/checked by)
(A)	Issued - Camden Council	19.04.22	(OW/HC)



Patio area lowered to be level with interior (approx 500-600mm)

Sliding or folding doors onto patio area

KITCHEN / LIVING / DINING

GUEST ROOM

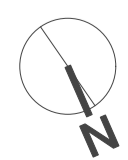
WC

PLANT ROOM

Glass door

NOTE: Window opens onto landing above to allow for passing-through of long items

Belfast sink



**HUGH CULLUM ARCHITECTS LTD**  
 Bloomsbury Design  
 61b Judd Street  
 London WC1H 9QT  
 t 020 7383 7647  
 f 020 7387 7645  
 mail@hughcullum.com

**101 South End Road**  
 As Proposed  
 General Arrangement  
 Lower Ground Floor Plan  
 1:50@A1, 1:100@A3  
 April 2022  
**SER101 - P100 (A)**

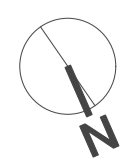
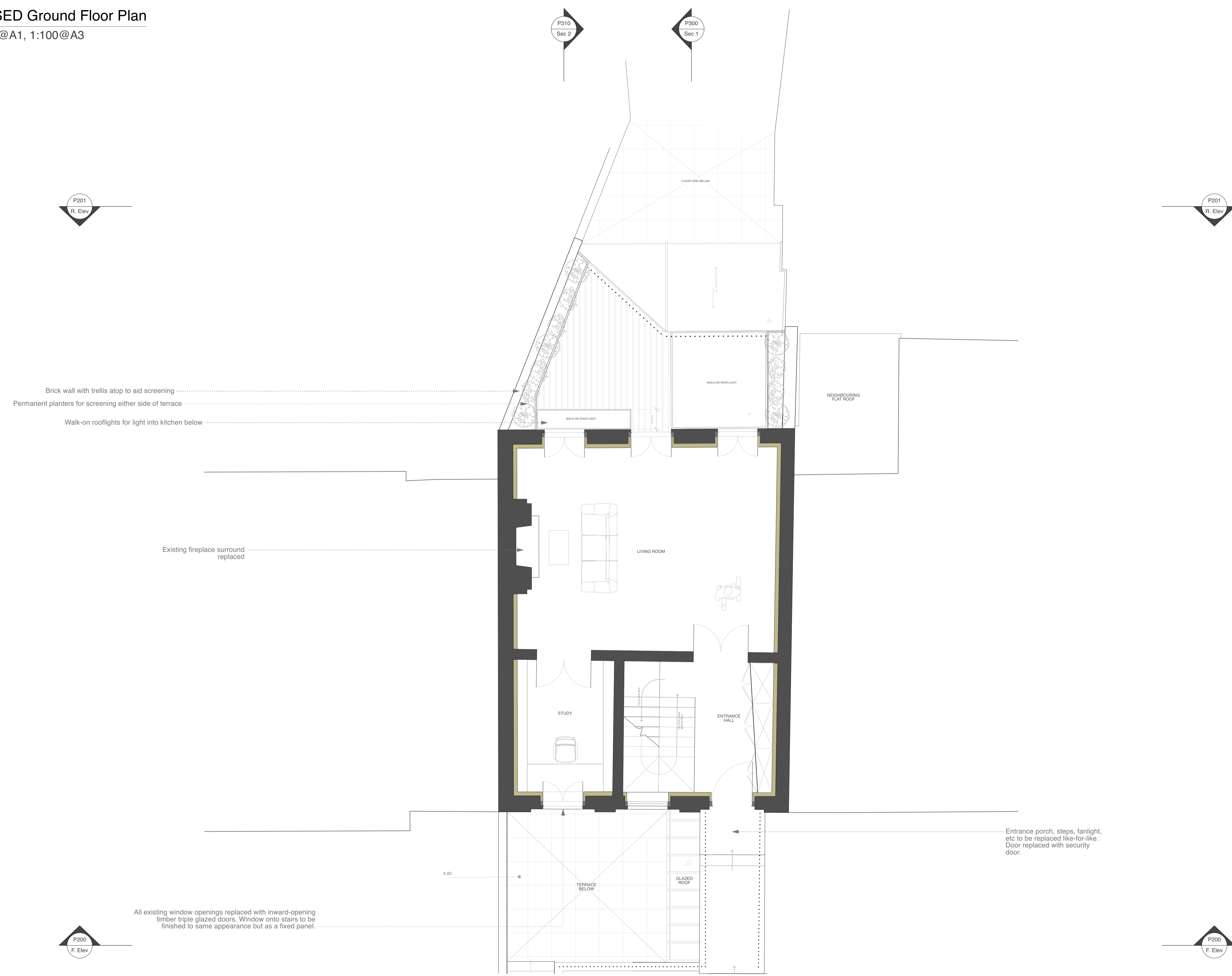
**General Notes**

- All dimensions to be verified on site
- To be read in conjunction with all relevant documents
- In the event of discrepancy notify the Architect immediately
- All steel structural elements to be finished with intumescent coating, 30 minutes fire resistance. For all structural elements and connection see SE drawings.
- This document is copyright of Hugh Cullum Architects Ltd

**Issue Status**

- SK Sketch
- T Tender
- P Permissions
- D Design
- E Existing Condition
- C Contract

rev	note	date	(drawn by/checked by)
(A)	Issued - Camden Council	19.04.22	(OW/HC)



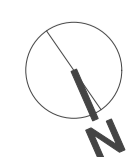
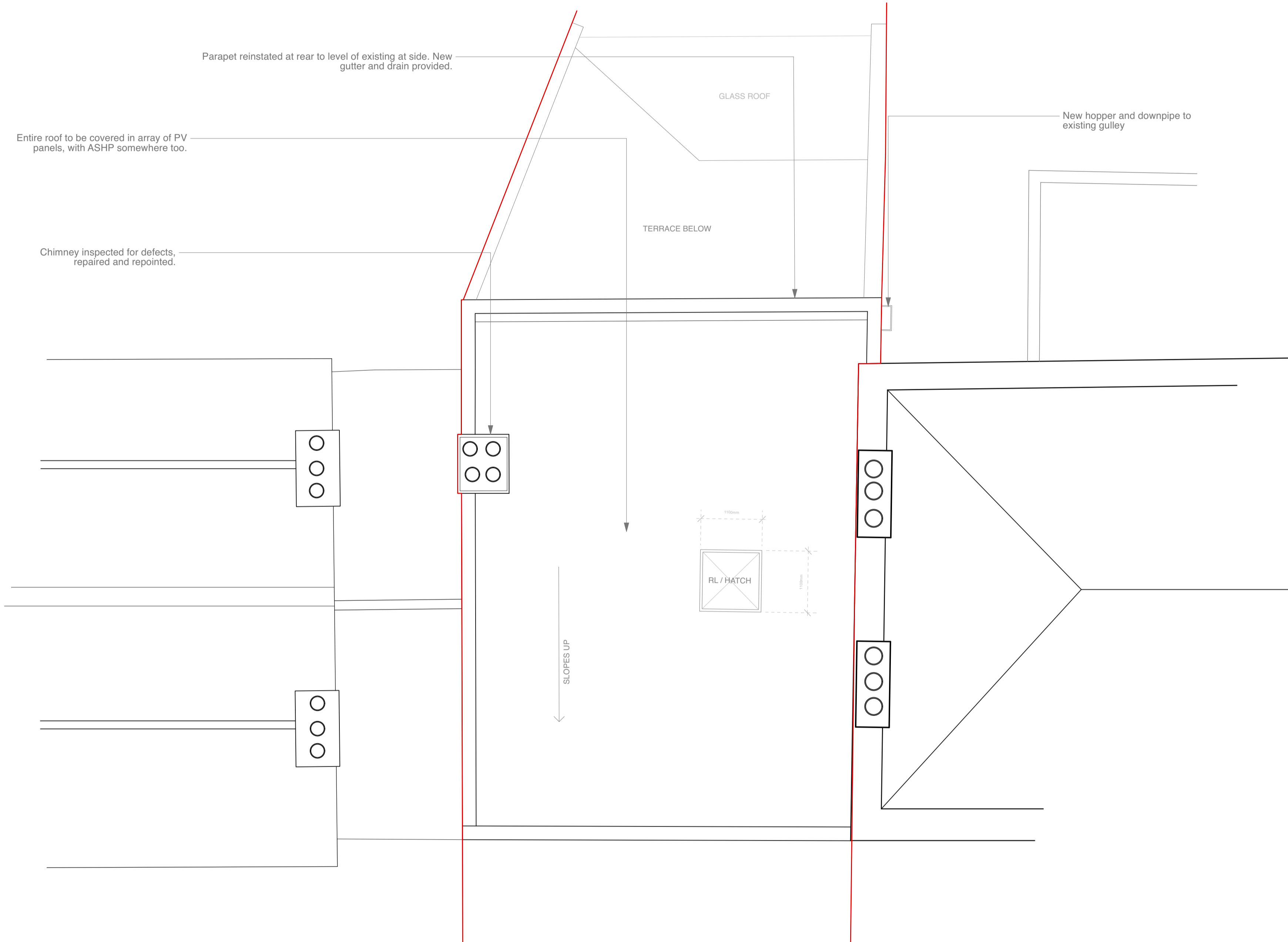
General Notes

- All dimensions to be verified on site
- To be read in conjunction with all relevant documents
- In the event of discrepancy notify the Architect immediately
- All steel structural elements to be finished with intumescent coating, 30 minutes fire resistance. For all structural elements and connection see SE drawings.
- This document is copyright of Hugh Cullum Architects Ltd

Issue Status

- SK Sketch
- T Tender
- P Permissions
- D Design
- E Existing Condition
- C Contract

rev	note	date	(drawn by/checked by)
(A)	Issued - Camden Council	19.04.22	(OW/HC)



General Notes

- All dimensions to be verified on site
- To be read in conjunction with all relevant documents
- In the event of discrepancy notify the Architect immediately
- All steel structural elements to be finished with intumescent coating, 30 minutes fire resistance. For all structural elements and connection see SE drawings.
- This document is copyright of Hugh Cullum Architects Ltd

Issue Status

- SK Sketch
- T Tender
- P Permissions
- D Design
- E Existing Condition
- C Contract

rev	note	date	(drawn by/checked by)
(A)	Issued - Camden Council	19.04.22	(OW/HC)



99 South End Road  
Under Development

101 South End Road  
Development Site

103 South End Road  
As Existing

**HUGH CULLUM**  
 ARCHITECTS LTD  
 Bloomsbury Design  
 61b Judd Street  
 London WC1H 9QT  
 t 020 7383 7647  
 f 020 7387 7645  
 mail@hughcullum.com

**101 South End Road**

As Proposed  
 General Arrangement  
 Front Elevation  
 1:50@A1, 1:100@A3  
 April 2022

**SER101 - P200 (A)**

General Notes

- All dimensions to be verified on site
- To be read in conjunction with all relevant documents
- In the event of discrepancy notify the Architect immediately
- All steel structural elements to be finished with intumescent coating, 30 minutes fire resistance. For all structural elements and connection see SE drawings.
- This document is copyright of Hugh Cullum Architects Ltd

Issue Status

- SK Sketch
- T Tender
- P Permissions
- D Design
- E Existing Condition
- C Contract

rev	note	date	(drawn by/checked by)
(A)	Issued - Camden Council	19.04.22	(OW/HC)



103 South End Road  
As Existing

101 South End Road  
Development Site

99 South End Road  
Under Development



**HUGH CULLUM**  
 ARCHITECTS LTD  
 Bloomsbury Design  
 61b Judd Street  
 London WC1H 9QT  
 t 020 7383 7647  
 f 020 7387 7645  
 mail@hughcullum.com

**101 South End Road**

As Proposed  
 General Arrangement  
 Rear Elevation  
 1:50@A1, 1:100@A3  
 April 2022

**SER101 - P201 (A)**

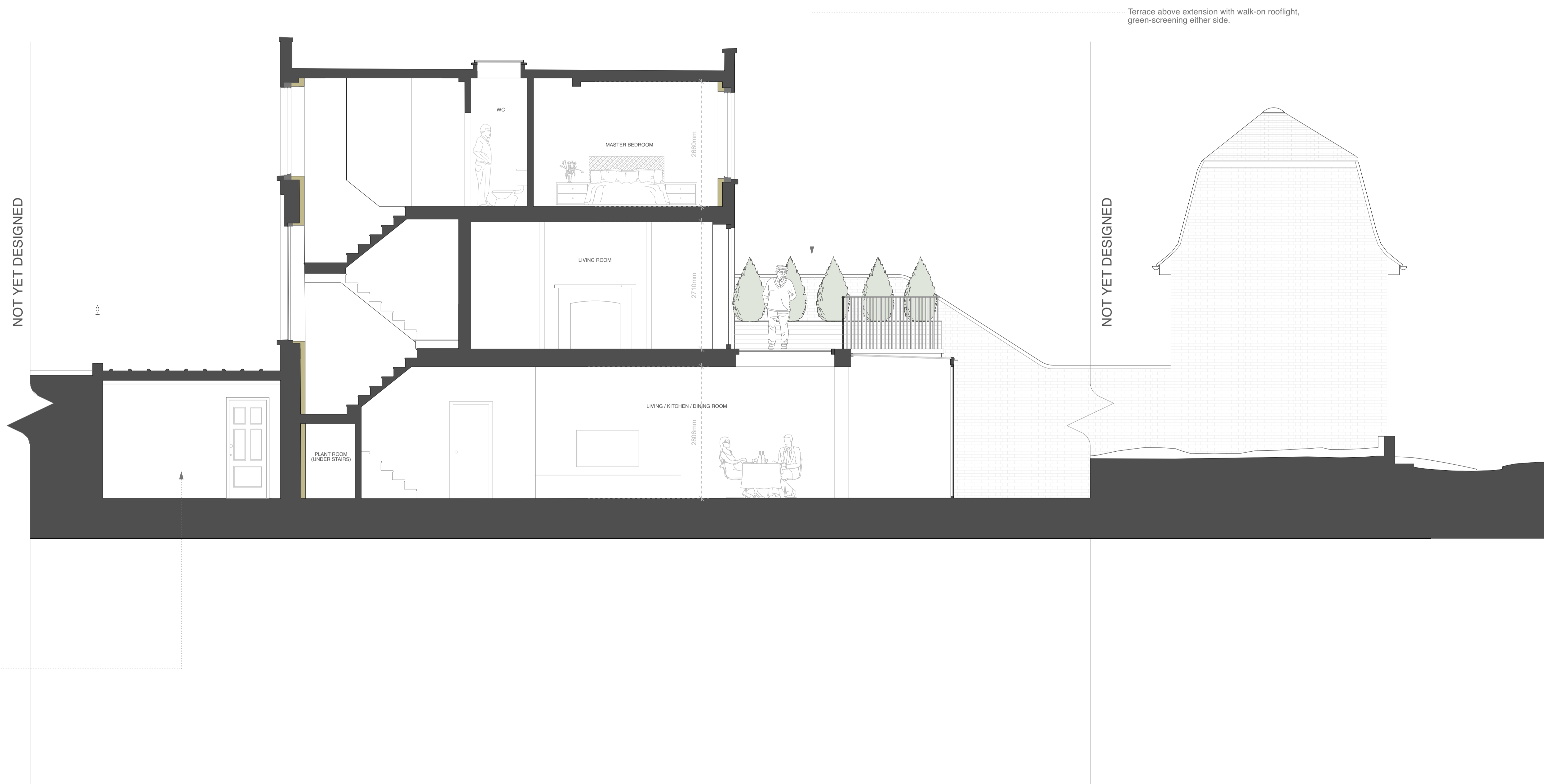
General Notes

- All dimensions to be verified on site
- To be read in conjunction with all relevant documents
- In the event of discrepancy notify the Architect immediately
- All steel structural elements to be finished with intumescent coating, 30 minutes fire resistance. For all structural elements and connection see SE drawings.
- This document is copyright of Hugh Cullum Architects Ltd

Issue Status

- SK Sketch
- T Tender
- P Permissions
- D Design
- E Existing Condition
- C Contract

rev	note	date	(drawn by/checked by)
(A)	Issued - Camden Council	19.04.22	(OW/HC)



New 'bootroom' area beneath entrance slab

NOT YET DESIGNED

NOT YET DESIGNED



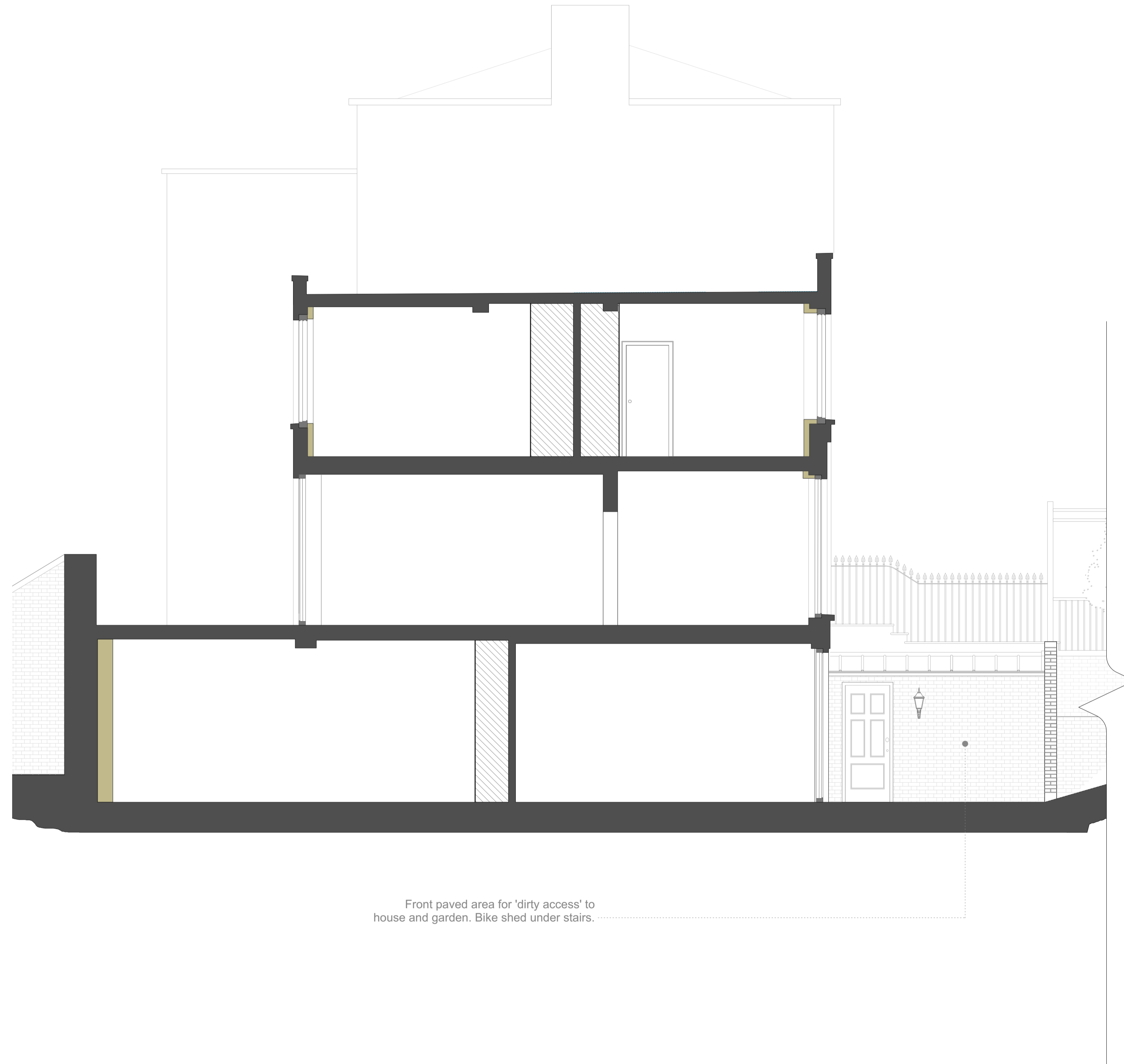
General Notes

- All dimensions to be verified on site
- To be read in conjunction with all relevant documents
- In the event of discrepancy notify the Architect immediately
- All steel structural elements to be finished with intumescent coating, 30 minutes fire resistance. For all structural elements and connection see SE drawings.
- This document is copyright of Hugh Cullum Architects Ltd

Issue Status

- SK Sketch
- T Tender
- P Permissions
- D Design
- E Existing Condition
- C Contract

rev	note	date	(drawn by/checked by)
(A)	Issued - Camden Council	19.04.22	(OW/HC)



NOT YET DESIGNED

Front paved area for 'dirty access' to house and garden. Bike shed under stairs.

