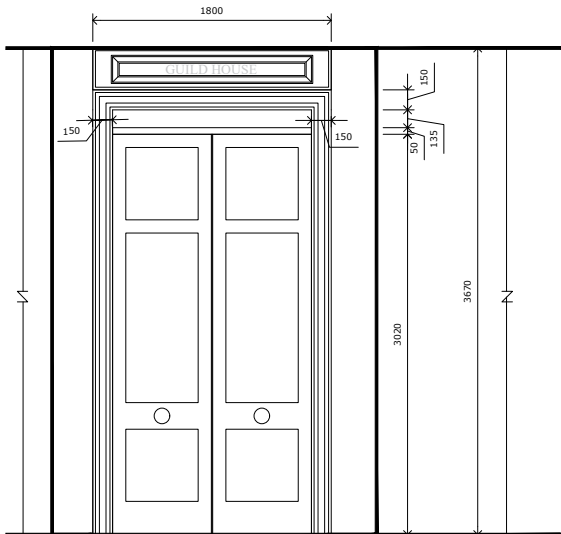


PROPOSED DOOR ELEVATIONS

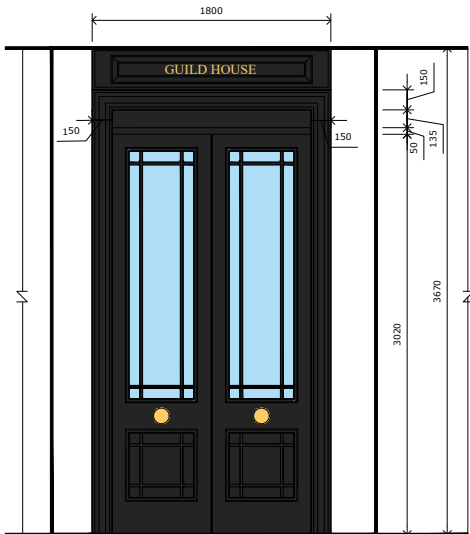


fig 1. Existing Entrance Door



EQUITY - Existing

GND FLOOR - Entrance Door



EQUITY - Proposed

GND FLOOR - Entrance Door



fig 2. Example Image

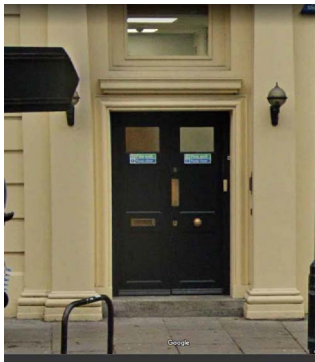
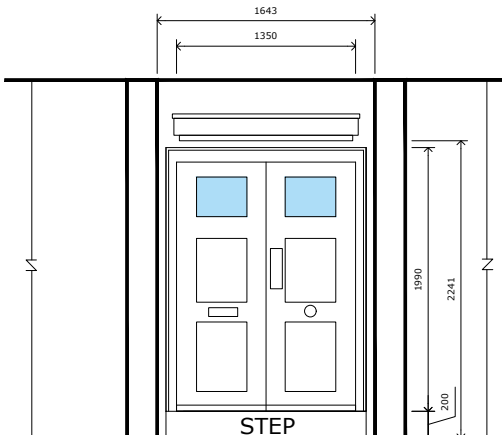


fig 3. Existing Side Door

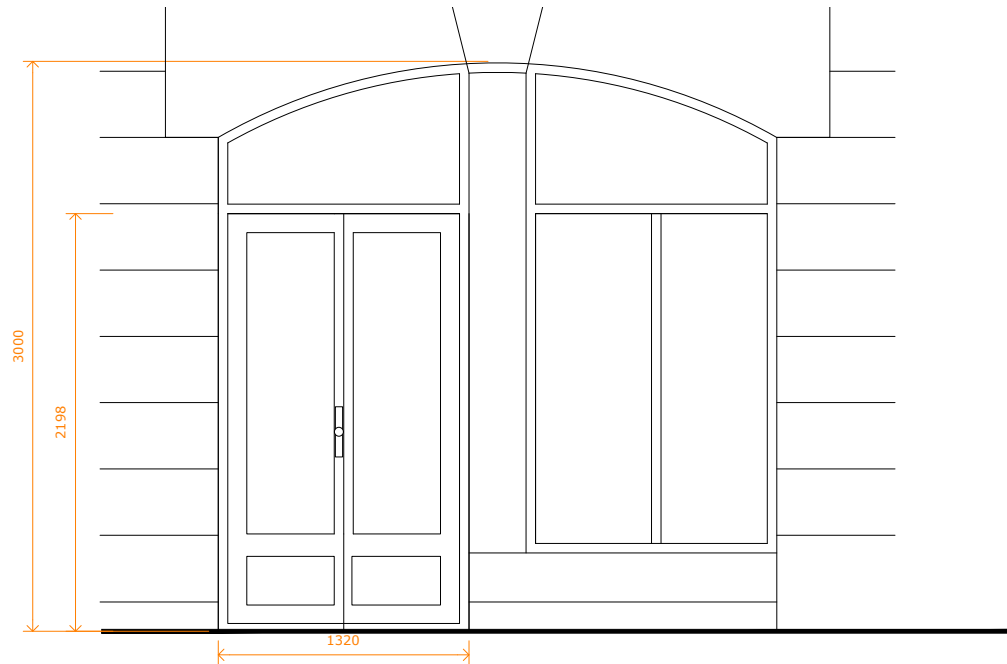


EQUITY - Existing



EQUITY - Proposed

PROPOSED FIRE DOOR ELEVATIONS



EQUITY - Existing

GND FLOOR - Side Door

Specification _
Smart Heritage, Thermally Broken Aluminium Double Door Set
Approx. 1320mm (w) x 2198mm (h)
Non-fire rated external double leaf doorset
As per drawing DET02(G)
Made from aluminium profile sections
PPC to standard single RAL colour
Glazed with 34mm clear double-glazed units, made from:

- 6mm Clear Toughened Glass
- 16mm Warm Edge Spacer Bar – Argon Gas Filled
- 12mm Clear Toughened Glass



EXTERIOR FACADE

New door to entrance, similar design to existing, with glazed panels.
Staff entrance to be replaced like for like.

