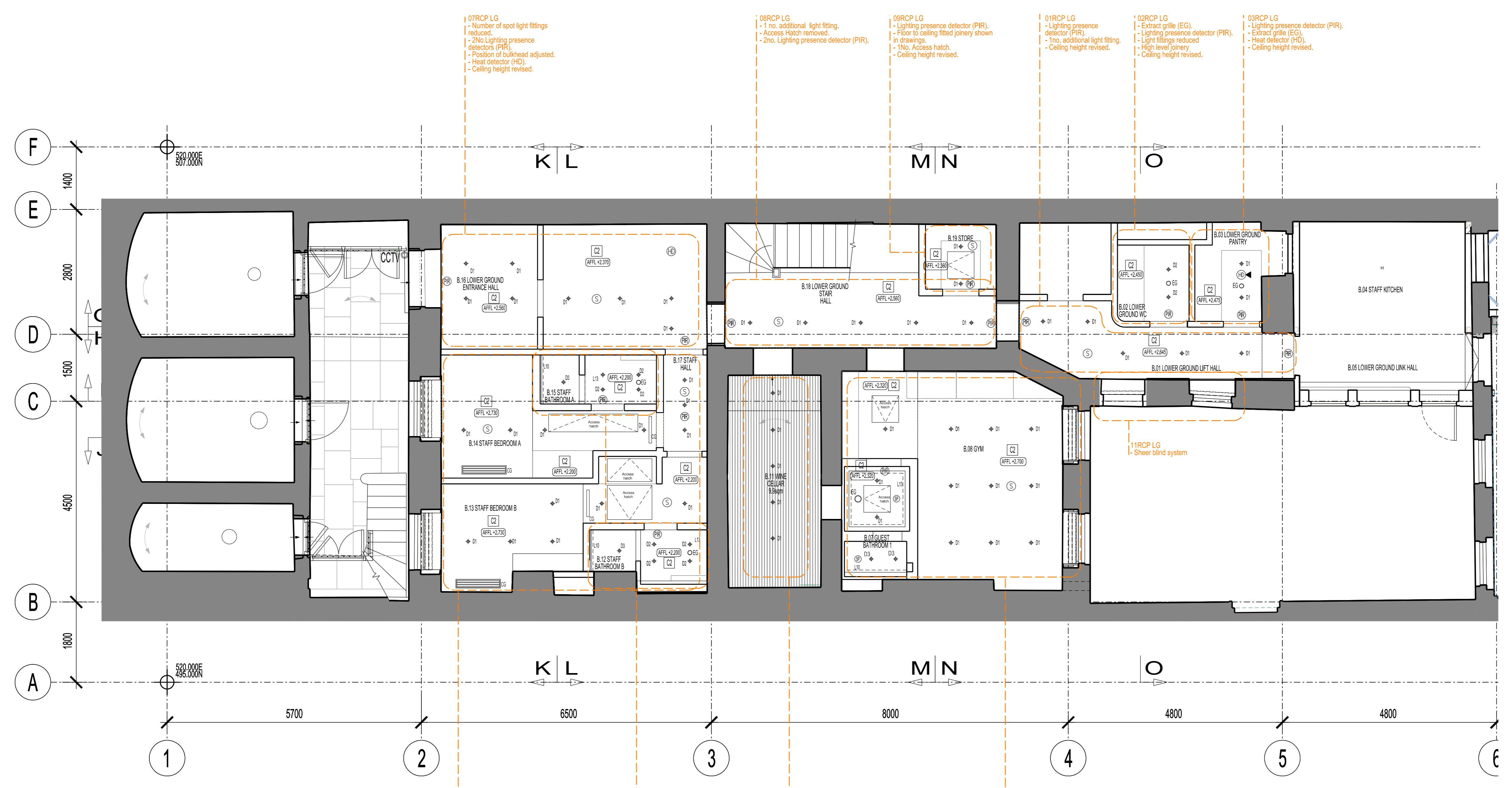


- KEY**
- ⊕ D1 Light fitting Type D1 - Recessed Downlight
 - ⊕ D2 Light fitting Type D2 - Recessed Downlight
 - ⊕ D3 Light fitting Type D3 - Recessed Downlight
 - L8 Light fitting Type L8 - Strip light in circular cove
 - L13L10 Light fitting Type L13L10 - Strip light in shower/bathroom
 - L5 Light fitting Type L5 - Strip light in bathroom
 - ⊙ S1 Light fitting Type S1 - Ceiling surface mounted
 - ⊗ P01 Light fitting Type P01 - Pendant light fitting
 - ⊙ Air Aspiring Sampling Point
 - ⊙ SD Smoke detector
 - ⊕ HD Heat Detector c/w Sounder Base
 - ⊕ HD Heat Detector
 - ⊕ HD Heat Detector with Sounder & Beacon
 - ⊕ Indicator light for smoke in lift shaft
 - C1 Existing ceiling
 - C2 New Ceiling
 - C3 New Ceiling - Ceiling Lining under existing timber beams
 - C4 New Ceiling Finish - Overboarding to existing Lath & Plaster
 - CG Linear Ceiling Grille
 - CS Ceiling Slots
 - EG Extract Grille
 - AFFL +XXXX Above proposed Finish Floor Level
 - PIR Security / Lighting Presence Detector
 - SP Speaker
 - CCTV CCTV - Consented as part of LBC 2021/1804L



01RCP LG
 - Number of spot light fittings reduced
 - 2no. Lighting presence detector (PIR)
 - Position of bulkhead adjusted
 - Heat detector (HD)
 - Ceiling height revised.

02RCP LG
 - 1 no. additional light fitting
 - Access Hatch removed
 - 2no. Lighting presence detector (PIR)
 - No. Access hatch
 - Ceiling height revised.

03RCP LG
 - Lighting presence detector (PIR)
 - Floor to ceiling fixed joinery shown in drawings
 - No. Access hatch
 - Ceiling height revised.

04RCP LG
 - Lighting presence detector (PIR)
 - 1no. additional light fitting
 - Ceiling height revised.

05RCP LG
 - Extract grille (EG)
 - Lighting presence detector (PIR)
 - Light fittings reduced
 - High level joinery
 - Ceiling height revised.

06RCP LG
 - Lighting presence detector (PIR)
 - Extract grille (EG)
 - Heat detector (HD)
 - Ceiling height revised.

06RCP LG
 - New bulkhead to bedroom B.13
 - Ceiling grille (CG)
 - Lighting presence detector (PIR)
 - Access Hatch relocated, size adjusted and one more added
 - Number of spot light fittings reduced in room B.14
 - 1 no. additional spot light fitting to room B.13
 - Blackout and sheer blind system
 - Floor to ceiling fixed system
 - Ceiling heights revised.

07RCP LG
 - Ceiling and grid grille (EG) to bathroom B15
 - Access Hatch removed to bathroom B15
 - Lighting presence detector (PIR) to bathroom 15
 - Ceiling ceiling detail in shower enclosure with strip light

08RCP LG
 - Lighting included in RCP
 - New bulkhead above door opening.

09RCP LG
 - Layout change following removal of sauna
 - Number of light fittings reduced & revised layout
 - New bulkhead to entrance
 - 2no. Access hatch
 - Floor to ceiling fixed joinery
 - Blackout and sheer blind system
 - Ceiling heights revised
 - Ceiling heights revised
 - Squelch relocated to bathroom
 - New extract grille (EG) to bathroom
 - Lighting presence detector (PIR) to bathroom
 - Ceiling ceiling detail in shower and bathroom with strip light

0 1 2 3 4 5m

AS PROPOSED

BUILDING DESIGN PARTNERSHIP LTD SHALL HAVE NO RESPONSIBILITY FOR ANY USE OF THIS DOCUMENT OTHER THAN THAT FOR WHICH IT WAS PREPARED AND ISSUED. ALL DIMENSIONS SHOULD BE CHECKED ON SITE. DO NOT SCALE FROM THIS DRAWING. ANY DRAWING ERRORS OR OMISSIONS SHOULD BE BROUGHT TO THE ATTENTION OF BUILDING DESIGN PARTNERSHIP LTD AT THE ADDRESS SHOWN.		EXISTING / PROPOSED FABRIC ■ EXISTING FABRIC □ PROPOSED FABRIC	DRAWINGS TO BE READ IN CONJUNCTION WITH "2020696 Schedule of Changes Final Consent" PROPOSED CHANGE No. XX	18 Brewhouse Yard Chiswick London, ECUV 4LJ United Kingdom T +44 (0)20 7812 8000 F +44 (0)20 7812 8599 www.bdp.com	BDP. 42 BEDFORD SQUARE P2020696 LOWER GROUND FLOOR REFLECTED CEILING PLAN AS PROPOSED (15)AC121_MH	SCALE 1:50 DATE 12.2017 SHEET B
--	--	--	---	--	--	--