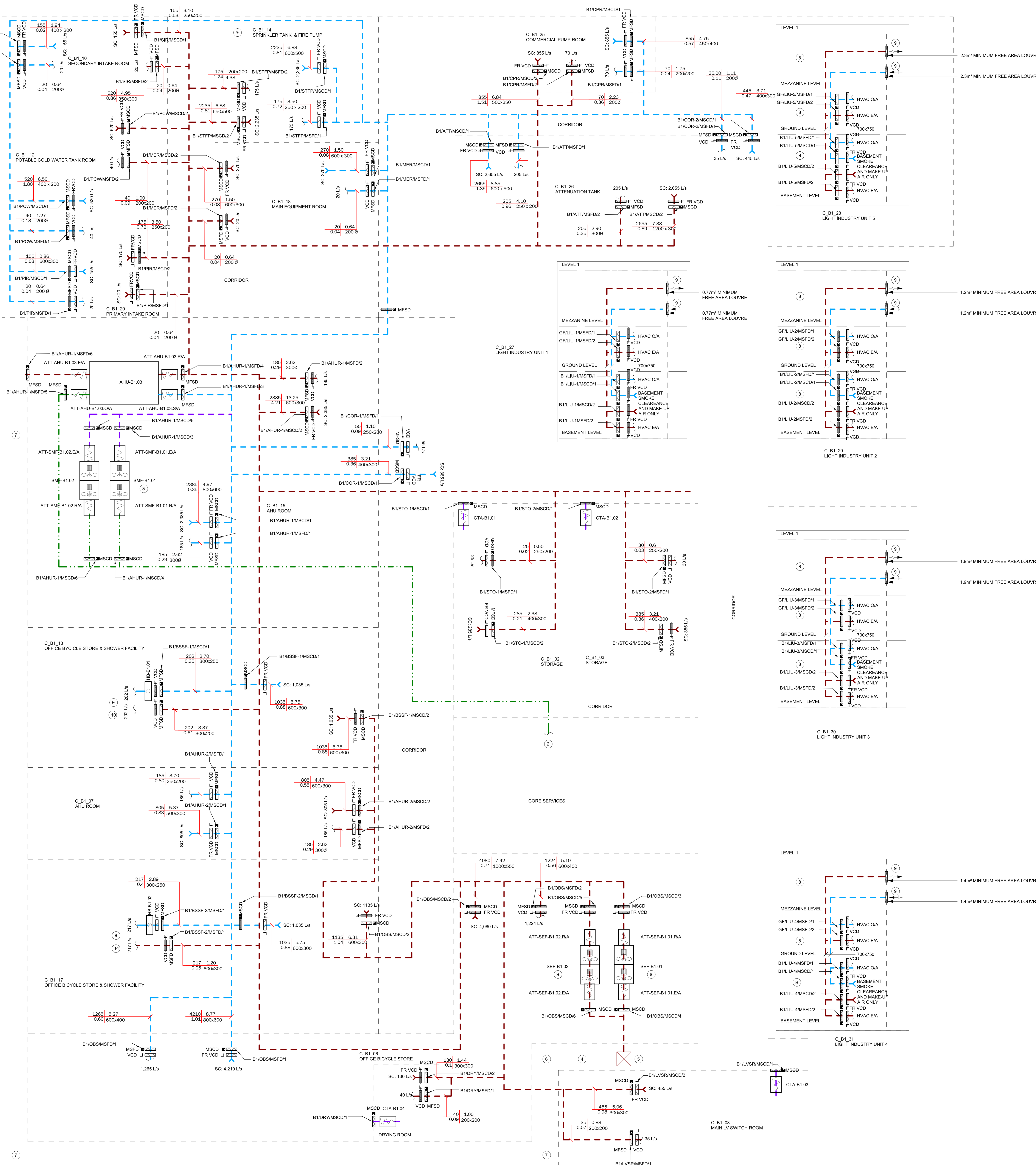
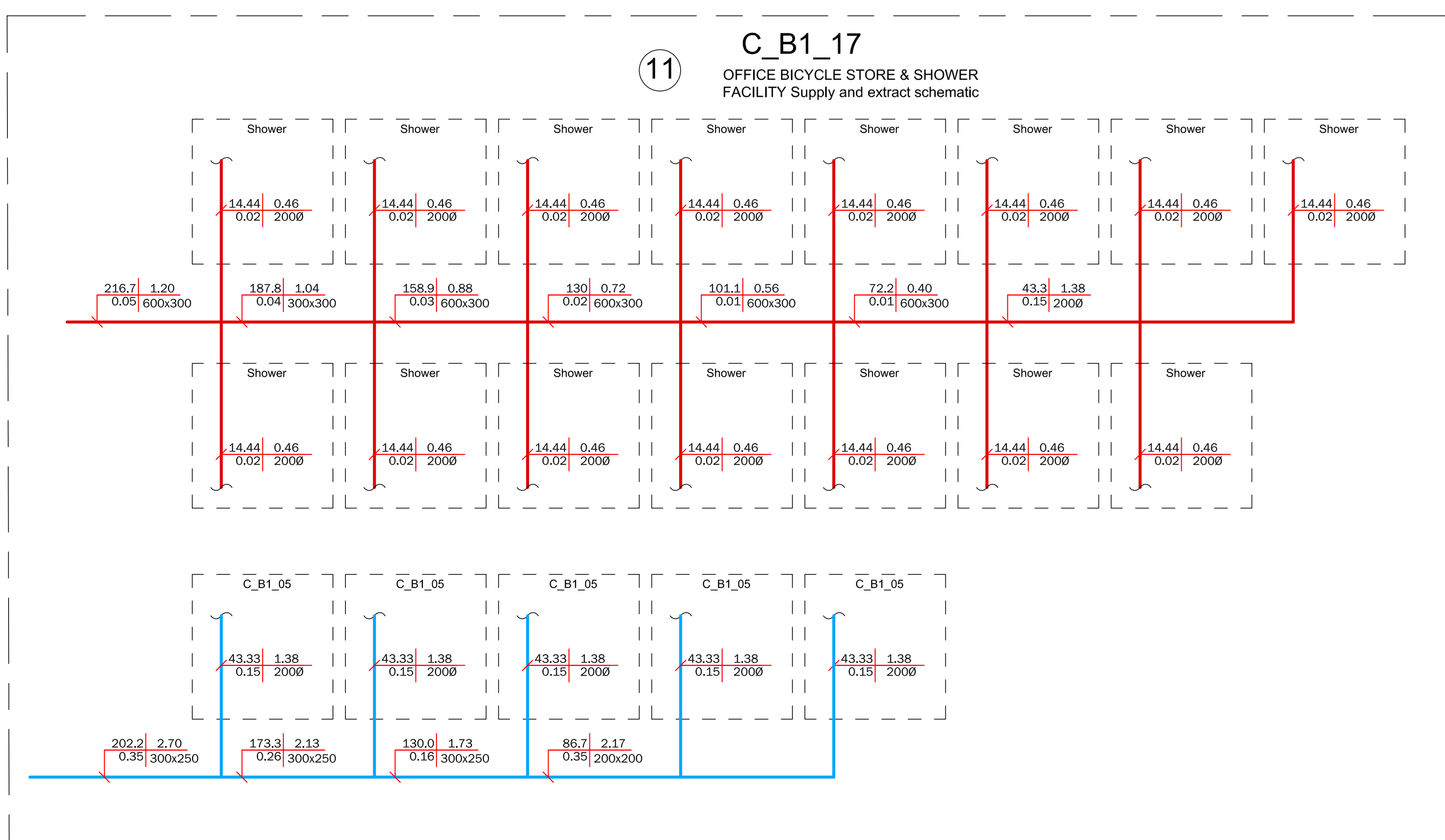
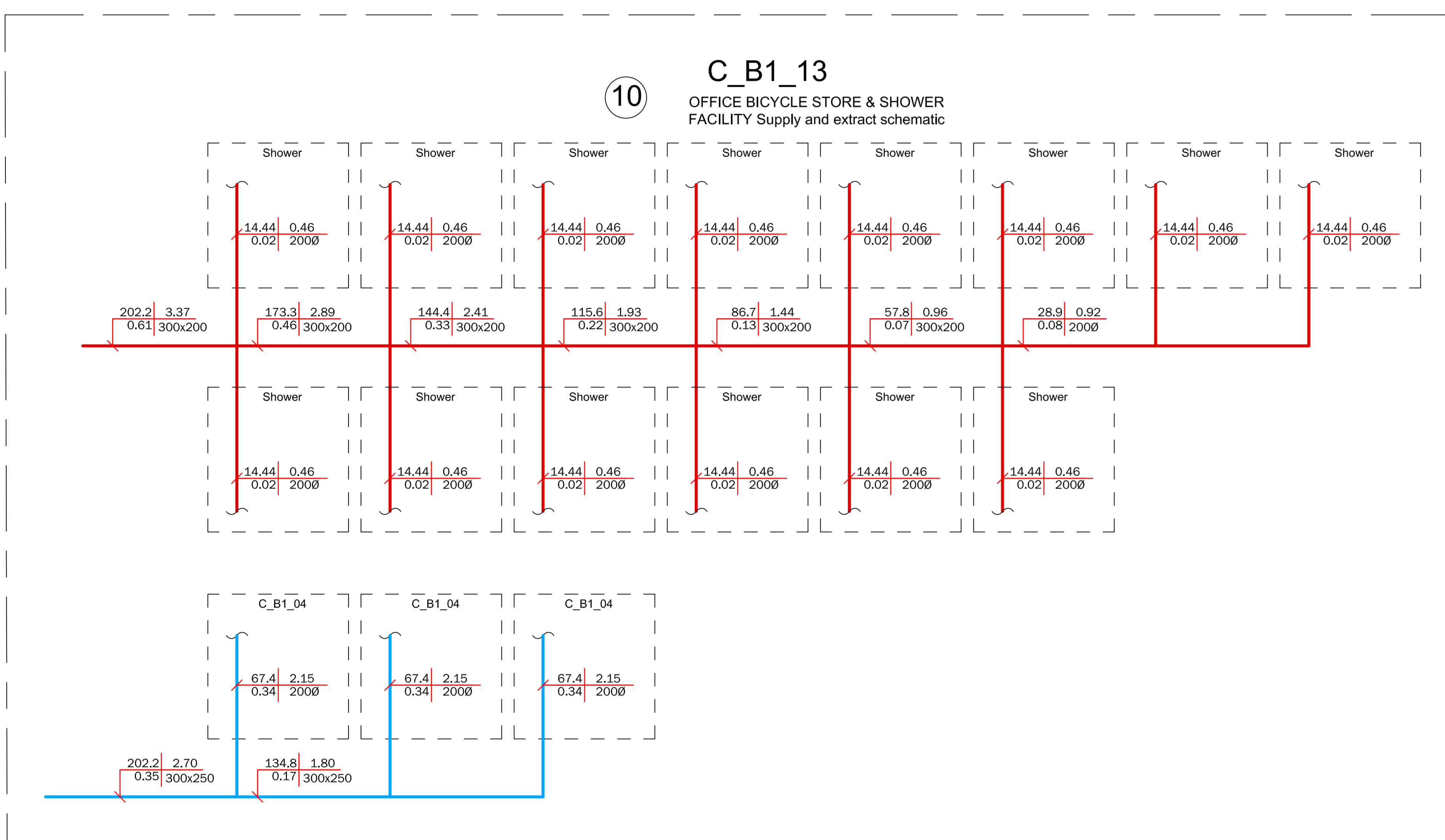
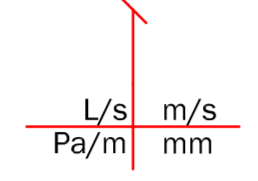
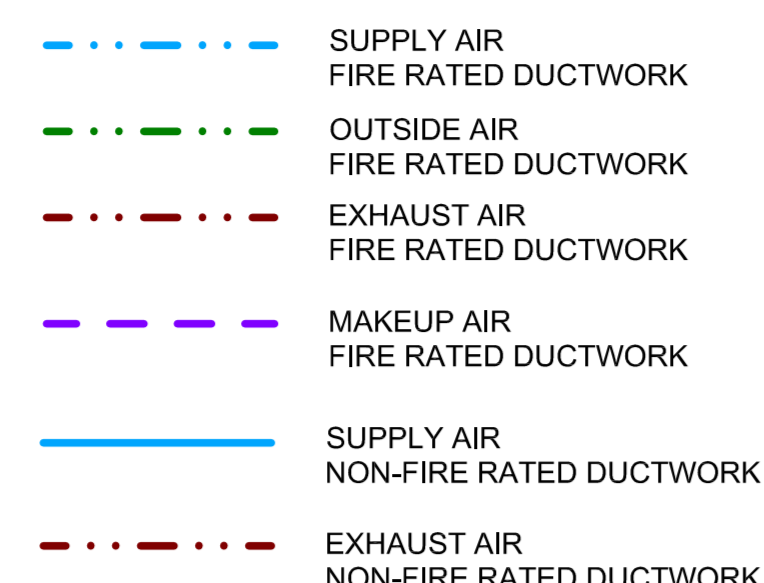


**GENERAL NOTES**

- DO NOT SCALE. VERIFY ALL DIMENSIONS BY SITE MEASUREMENT
- THIS DRAWING IS TO BE READ IN CONJUNCTION WITH ALL RELEVANT DRAWINGS AND SPECIFICATIONS.
- REFER LAYOUT FOR GRILLE TYPES AND DUCT SIZES

- | No. | DESCRIPTION  |
|-----|--|
| 1   | FOR DIESEL SPRINKLER PUMP OPERATION, VENTILATION REQUIRED FOR ASPRATION AND HEAT GAINS, REFER ANCILLARY VENTILATION SCHEMATIC  |
| 2   | O/A RISER CONNECTION, F/A  |
| 3   | LIFE SAFETY FANS TO BE ENCASED WITHIN 120MINUTE FIRE RATED ENCLOSURE COMPLETE WITH 120MINUTE FIRE RATED ACCESS PANELS FOR PLANT REPLACEMENT, ACCESS AND MAINTENANCE    |
| 4   | MPSO TO ENSURE SMOKE IS DISCHARGED OUTSIDE OF BUILDING   |
| 5   | DISCHARGE AIR PLENUM TO EXHAUST LOUVRE ABOVE UKFN ROOM   |
| 6   | REFER VENTILATION LAYOUT FOR CONTINUATION  |
| 7   | BUILDERS WORK EXHAUST AIR PLENUM   |
| 8   | DUCTWORK AND DAMPER INSTALLATION NOT PART OF CONTRACT WORKS. DETAIL WITHIN TO BE TO THE CONTRACTED WORKS A VARIATION SUBJECT TO CLIENT TENANCY AND LEASING DISCUSSIONS |
| 9   | LOUVRE TO BE WEATHER AND VERMIN PROOF. TENANT LOUVRE PROVISION TO BE INSULATED AND BLANKED FOR TENANT FIT-OUT  |
| 10  | C.B1_13 - OFFICE BICYCLE STORE & SHOWER FACILITY Supply and extract schematic continuation   |
| 11  | C.B1_17 - OFFICE BICYCLE STORE & SHOWER FACILITY Supply and extract schematic continuation   |



Model 1 Louvre is used for the majority of the louvres which is supplied in accordance with the manufacturer's specifications. Model 2 Louvre is used for the majority of the louvres which is supplied in accordance with the manufacturer's specifications. Model 3 Louvre is used for the majority of the louvres which is supplied in accordance with the manufacturer's specifications.



Notes:

REV	DATE	REVISION	TC	DA
P01	10/12/21	STAGE 4A ISSUE		

Stage 4 Consultant: **Norman Disney & Young**  
 Architect: **Caruso St John Architects**

Client: **Westminster Real Estate**

Project: **St Pancras Campus**

Status: **STAGE 4A ISSUE**

Drawing Title: **MECHANICAL SERVICES COMMERCIAL DEMISE BASEMENT SMOKE EXHAUST SCHEMATIC**

MDL **Chapman + BDP**

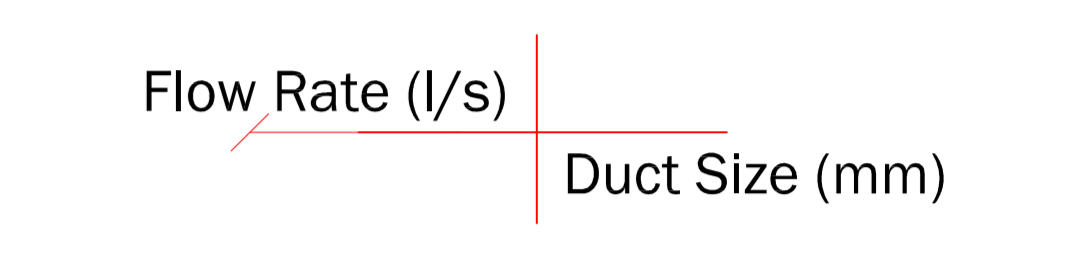
Discipline	Version	Operator CAD Bureau	Checked Date	Checked By	Discipline	Version	Operator CAD Bureau	Checked Date	Checked By
Mechanical	1	CHAPMAN+BDP	10/12/2021	ME 2651	Mechanical	1	CHAPMAN+BDP	10/12/2021	TBC
Approved by	TC				Shared Schematic Code	SI			

Drawing Number: **SPC-MJL-ZJ-XX-DR-M-50021** Revision: **P01**





- Notes:
1. Do not scale. Verify all dimensions by site measurement.
  2. This drawing is to be read in conjunction with all relevant drawings and specifications.
  3. For Mechanical Symbols Legend refer to drawing No. SPC-MJL-ZZ-XX-DR-M-05000
  4. Flow rates shown are worst case 'overheating mode'.



REV	DATE	REVISION	TC	DA
P01	21/01/22	RFC 06 ISSUE		
			DRN	CHK

Stage 4 Consultant: **Norman Disney & Young** Architects  
 Architect: **Caruso St John Architects**

Client: **Westminster Real Estate**

Project: **St Pancras Campus**

Status: **STAGE 4A ISSUE**

Drawing Title: **MECHANICAL SERVICES COMMERCIAL DEMISE L06 EVENT SPACE VENTILATION SCHEMATIC**



Checked By	Checked Date	Checked By	Checked Date
TC	21/01/2022	ME	26/01/2022
Approved By	Approved Date	Checked By	Checked Date
TC	21/01/2022	TBC	
Author	Sheet Submittal Code	Scale	Scale
TC	S3	N/A	N/A

Drawing Number: **SPC-MJL-ZZ-XX-DR-M-50028** Revision: **P01**

