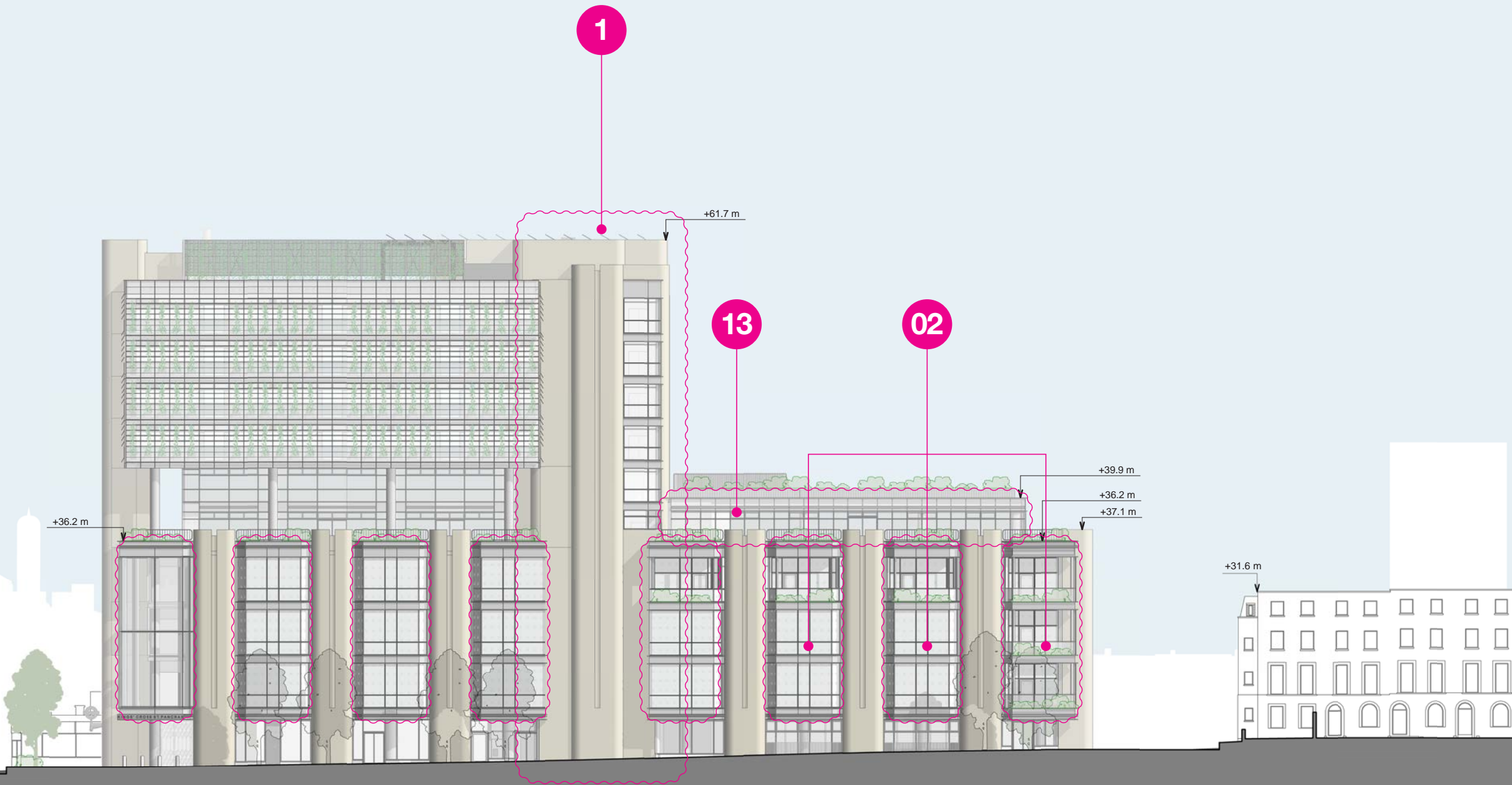


PROPOSED



REV DATE DESCRIPTION

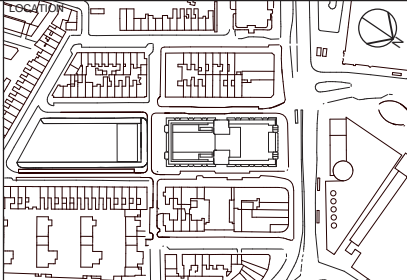
P01 28/08/20 PLANNING
P02 05/11/20 PLANNING REVISED
P03 25/03/22 PLANNING REVISED

| | |
|-----------------------|---|
| CLIENT: | PRECIS ADVISORY LTD / ACCESS SELF STORAGE |
| CONTRACTOR: | |
| PROJECT MANAGER: | CPC |
| STRUCTURAL ENGINEER: | AKTII |
| MECHANICAL ENGINEER: | ATELIER TEN |
| COST CONSULTANT: | ALINEA |
| FACADE CONSULTANT: | FMDC |
| FIRE CONSULTANT: | ARUP |
| LANDSCAPE CONSULTANT: | BHSLA |
| ACOUSTIC CONSULTANT: | SANDY BROWN |

NOTE

When this drawing is issued in uncontrolled CAD format it will be accompanied by a PDF version and is issued to enable the recipient to prepare their own documents / models / drawings for which they are solely responsible.
The recipient should report all drawing errors, omissions and discrepancies to the architect. All dimensions should be checked on site by the contractor and such dimensions shall be the contractor's responsibility.

Allford Hall Monaghan Morris Limited accepts no responsibility or liability for:-
- any use of this drawing by parties other than the party for whom it was prepared or for purposes other than those for which it was prepared
- any alterations or additions to or discrepancies arising out of changes to the background information on which the drawings are based that was current at the time of issue, and which occur to that information after it has been issued by AHMM
- any loss or degradation of the information held in this drawing resulting from the translation from the original file format to any other file format or from the recipient's reading of it in any other programme or any version of the programme other than that which was used to prepare it
- the accuracy of survey information provided by others or for any costs, claims, proceedings and expenses arising out of reliance on such information
- any scaling from this drawing other than by the local planning authority solely for the purposes of the planning application to which it relates



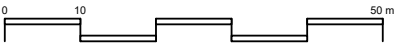
ALLFORD HALL MONAGHAN MORRIS

ARCHITECTS Ltd
MORELANDS, 5-23 OLD STREET LONDON EC1V 9HL
TEL 020 7251 5261 FAX 020 7251 5123 WEB WWW.AHMM.CO.UK

job title
BELGROVE HOUSE
drawing title / location
WEST ELEVATION - PROPOSED

| | | | |
|----------|---------|-------------|----------------|
| drawn by | checked | scale | status |
| AHMM | HN | 1 : 200 @A1 | PLANNING |
| project | zone | source | classification |
| 17002 | P | A | (00)_P203 P03 |

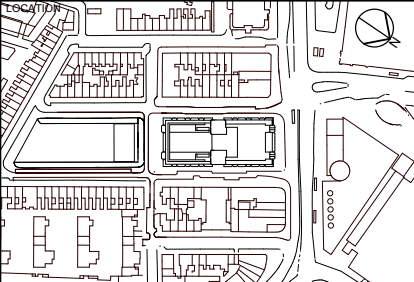
APPROVED



| REV | DATE | DESCRIPTION |
|-----|----------|------------------|
| P01 | 21/08/20 | PLANNING |
| P02 | 05/11/20 | PLANNING REVISED |

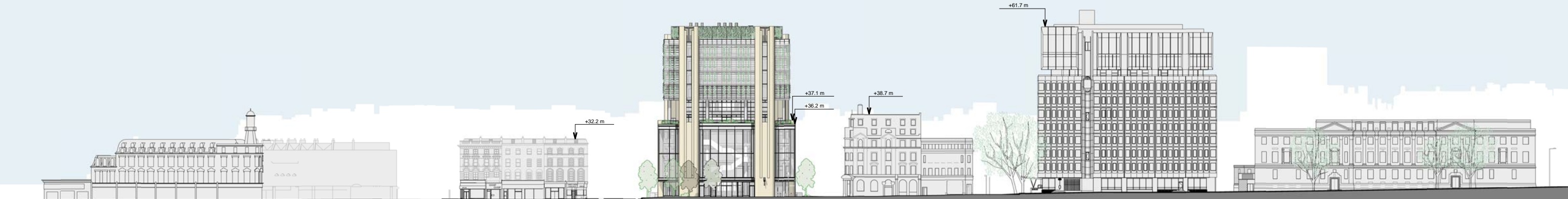
| | |
|-----------------------|---|
| CLIENT: | PRECIS ADVISORY LTD / ACCESS SELF STORAGE |
| CONTRACTOR: | |
| PROJECT MANAGER: | |
| STRUCTURAL ENGINEER: | AKTII |
| MECHANICAL ENGINEER: | ATELIER TEN |
| COST CONSULTANT: | ALINEA |
| FACADE CONSULTANT: | FMDC |
| FIRE CONSULTANT: | BUREAU VERITAS |
| LANDSCAPE CONSULTANT: | BHSLA |
| ACOUSTIC CONSULTANT: | SANDY BROWN |
| | |
| | |
| | |

| |
|--|
| NOTE |
| When this drawing is issued in uncontrolled CAD format it will be accompanied by a PDF version and is issued to enable the recipient to prepare their own documents / models / drawings for which they are solely responsible. The recipient should report all drawing errors, omissions and discrepancies to the architect. All dimensions should be checked on site by the contractor and such dimensions shall be the contractor's responsibility. |
| Alford Hall Monaghan Morris Limited accepts no responsibility or liability for:- - any use of this drawing by parties other than the party for whom it was prepared or for purposes other than those for which it was prepared - any alterations or additions to or discrepancies arising out of changes to the background information on which the drawings are based that was current at the time of issue, and which occur to that information after it has been issued by AHMM - any loss or degradation of the information held in this drawing resulting from the translation from the original file format to any other file format or from the recipients reading of it in any other programme or any version of the programme other than that which was used to prepare it - the accuracy of survey information provided by others or for any costs, claims, proceedings and expenses arising out of reliance on such information - any scaling from this drawing other than by the local planning authority solely for the purposes of the planning application to which it relates |



| | | | | | | |
|--|---------|------------|----------------|-------------|----------|--|
| ALLFORD HALL MONAGHAN MORRIS | | | | | | |
| ARCHITECTS Ltd MORELANDS, 5-23 OLD STREET LONDON EC1V 9HL TEL 020 7251 5261 FAX 020 7251 5123 WEB WWW.AHMM.CO.UK | | | | | | |
| Job title 17002 BELGROVE HOUSE | | | | | | |
| drawing title / location NORTH CONTEXT ELEVATION - PROPOSED | | | | | | |
| drawn by | checked | scale | | | status | |
| AHMM | HN | 1 : 500@A1 | | | PLANNING | |
| project | zone | source | classification | drawing no. | revision | |
| 17002 | P | A | (00)_P204 | P02 | | |

PROPOSED



01050

| REV | DATE | DESCRIPTION |
|-----|----------|------------------|
| P01 | 21/08/20 | PLANNING |
| P02 | 05/11/20 | PLANNING REVISED |
| P03 | 25/03/22 | PLANNING REVISED |

| | |
|-----------------------|---|
| CLIENT: | PRECIS ADVISORY LTD / ACCESS SELF STORAGE |
| CONTRACTOR: | |
| PROJECT MANAGER: | CPC |
| STRUCTURAL ENGINEER: | AKTII |
| MECHANICAL ENGINEER: | ATELIER TEN |
| COST CONSULTANT: | ALINEA |
| FACADE CONSULTANT: | FMDC |
| FIRE CONSULTANT: | ARUP |
| LANDSCAPE CONSULTANT: | BHSLA |
| ACOUSTIC CONSULTANT: | SANDY BROWN |
| | |
| | |
| | |

NOTE

When this drawing is issued in uncontrolled CAD format it will be accompanied by a PDF version and is issued to enable the recipient to prepare their own documents / models / drawings for which they are solely responsible.
The recipient should report all drawing errors, omissions and discrepancies to the architect. All dimensions should be checked on site by the contractor and such dimensions shall be the contractor's responsibility.

Allford Hall Monaghan Morris Limited accepts no responsibility or liability for:-
- any use of this drawing by parties other than the party for whom it was prepared or for purposes other than those for which it was prepared
- any alterations or additions to or discrepancies arising out of changes to the background information on which the drawings are based that was current at the time of issue, and which occur to that information after it has been issued by AHMM
- any loss or degradation of the information held in this drawing resulting from the translation from the original file format to any other file format or from the recipient's reading of it in any other programme or any version of the programme other than that which was used to prepare it
- the accuracy of survey information provided by others or for any costs, claims, proceedings and expenses arising out of reliance on such information
- any scaling from this drawing other than by the local planning authority solely for the purposes of the planning application to which it relates

LOCATION

ALLFORD HALL MONAGHAN MORRIS

ARCHITECTS Ltd
MORELANDS, 5-23 OLD STREET LONDON EC1V 9HL
TEL 020 7251 5261 FAX 020 7251 5123 WEB WWW.AHMM.CO.UK

job title

BELGROVE HOUSE

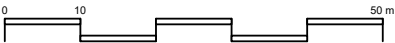
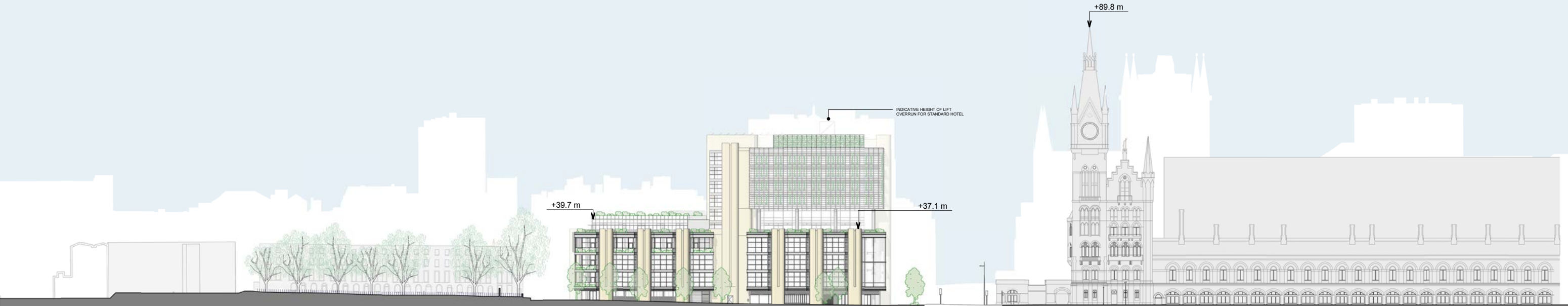
drawing title / location

NORTH CONTEXT ELEVATION - PROPOSED

| | | | |
|----------|---------|-------------|----------------|
| drawn by | checked | scale | status |
| AHMM | HN | 1 : 500 @A1 | PLANNING |
| project | zone | source | classification |
| 17002 | P | A | (00)_P204 |
| | | | revision |
| | | | P03 |

© Allford Hall Monaghan Morris Limited

APPROVED



| REV | DATE | DESCRIPTION |
|-----|----------|------------------|
| P01 | 21/08/20 | PLANNING |
| P02 | 05/11/20 | PLANNING REVISED |

| | |
|-----------------------|---|
| CLIENT: | PRECIS ADVISORY LTD / ACCESS SELF STORAGE |
| CONTRACTOR: | |
| PROJECT MANAGER: | |
| STRUCTURAL ENGINEER: | AKTII |
| MECHANICAL ENGINEER: | ATELIER TEN |
| COST CONSULTANT: | ALINEA |
| FACADE CONSULTANT: | FMDC |
| FIRE CONSULTANT: | BUREAU VERITAS |
| LANDSCAPE CONSULTANT: | BHSLA |
| ACOUSTIC CONSULTANT: | SANDY BROWN |
| | |
| | |
| | |

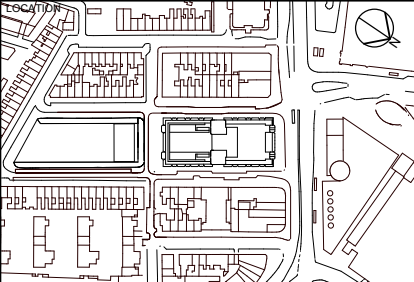
NOTE

When this drawing is issued in uncontrolled CAD format it will be accompanied by a PDF version and is issued to enable the recipient to prepare their own documents / models / drawings for which they are solely responsible.

The recipient should report all drawing errors, omissions and discrepancies to the architect. All dimensions should be checked on site by the contractor and such dimensions shall be the contractor's responsibility.

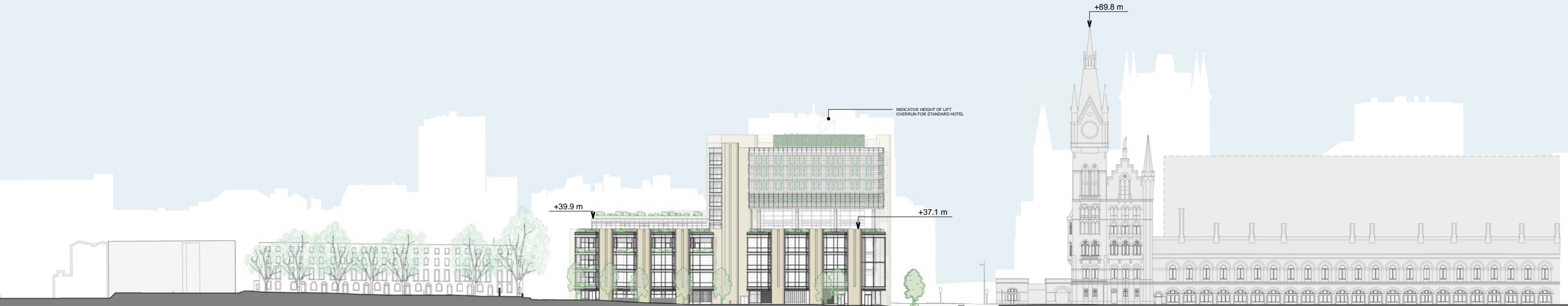
Allford Hall Monaghan Morris Limited accepts no responsibility or liability for:-

- any use of this drawing by parties other than the party for whom it was prepared or for purposes other than those for which it was prepared
- any alterations or additions to or discrepancies arising out of changes to the background information on which the drawings are based that was current at the time of issue, and which occur to that information after it has been issued by AHMM
- any loss or degradation of the information held in this drawing resulting from the translation from the original file format to any other file format or from the recipient's reading of it in any other programme or any version of the programme other than that which was used to prepare it
- the accuracy of survey information provided by others or for any costs, claims, proceedings and expenses arising out of reliance on such information
- any scaling from this drawing other than by the local planning authority solely for the purposes of the planning application to which it relates



| | | | | | |
|--|---------------|---------------------|-----------------------------|-------------|-----------------|
| ALLFORD HALL MONAGHAN MORRIS | | | | | |
| ARCHITECTS Ltd MORELANDS, 5-23 OLD STREET LONDON EC1V 9HL TEL 020 7251 5261 FAX 020 7251 5123 WEB WWW.AHMM.CO.UK | | | | | |
| Job title 17002 BELGROVE HOUSE | | | | | |
| drawing title / location EAST CONTEXT ELEVATION - PROPOSED | | | | | |
| drawn by AHMM | checked HN | scale 1 : 500@A1 | status PLANNING | | |
| project 17002 | zone P | source A | classification (00)_P205 | drawing no. | revision P02 |

PROPOSED



| <div>01050</div> | | <table><tr><th>REV</th><th>DATE</th><th>DESCRIPTION</th></tr><tr><td>P01</td><td>21/08/20</td><td>PLANNING</td></tr><tr><td>P02</td><td>05/11/20</td><td>PLANNING REVISED</td></tr><tr><td>P03</td><td>25/03/22</td><td>PLANNING REVISED</td></tr></table> | | REV | DATE | DESCRIPTION | P01 | 21/08/20 | PLANNING | P02 | 05/11/20 | PLANNING REVISED | P03 | 25/03/22 | PLANNING REVISED | <table><tr><td>CLIENT:</td><td>PRECIS ADVISORY LTD / ACCESS SELF STORAGE</td></tr><tr><td>CONTRACTOR:</td><td></td></tr><tr><td>PROJECT MANAGER:</td><td>CPC</td></tr><tr><td>STRUCTURAL ENGINEER:</td><td>AKTII</td></tr><tr><td>MECHANICAL ENGINEER:</td><td>ATELIER TEN</td></tr><tr><td>COST CONSULTANT:</td><td>ALINEA</td></tr><tr><td>FACADE CONSULTANT:</td><td>FMDC</td></tr><tr><td>FIRE CONSULTANT:</td><td>ARUP</td></tr><tr><td>LANDSCAPE CONSULTANT:</td><td>BHSLA</td></tr><tr><td>ACOUSTIC CONSULTANT:</td><td>SANDY BROWN</td></tr><tr><td></td><td></td></tr><tr><td></td><td></td></tr><tr><td></td><td></td></tr></table> | | CLIENT: | PRECIS ADVISORY LTD / ACCESS SELF STORAGE | CONTRACTOR: | | PROJECT MANAGER: | CPC | STRUCTURAL ENGINEER: | AKTII | MECHANICAL ENGINEER: | ATELIER TEN | COST CONSULTANT: | ALINEA | FACADE CONSULTANT: | FMDC | FIRE CONSULTANT: | ARUP | LANDSCAPE CONSULTANT: | BHSLA | ACOUSTIC CONSULTANT: | SANDY BROWN | | | | | | | <p>NOTE</p> <p>When this drawing is issued in uncontrolled CAD format it will be accompanied by a PDF version and is issued to enable the recipient to prepare their own documents / models / drawings for which they are solely responsible.</p> <p>The recipient should report all drawing errors, omissions and discrepancies to the architect. All dimensions should be checked on site by the contractor and such dimensions shall be the contractor's responsibility.</p> <p>Allford Hall Monaghan Morris Limited accepts no responsibility or liability for:-</p> <ul style="list-style-type: none">- any use of this drawing by parties other than the party for whom it was prepared or for purposes other than those for which it was prepared- any alterations or additions to or discrepancies arising out of changes to the background information on which the drawings are based that was current at the time of issue, and which occur to that information after it has been issued by AHMM- any loss or degradation of the information held in this drawing resulting from the translation from the original file format to any other file format or from the recipients reading of it in any other programme or any version of the programme other than that which was used to prepare it- the accuracy of survey information provided by others or for any costs, claims, proceedings and expenses arising out of reliance on such information- any scaling from this drawing other than by the local planning authority solely for the purposes of the planning application to which it relates | | <div>LOCATION</div> | | <div>ALLFORD HALL MONAGHAN MORRIS</div> <p>ARCHITECTS Ltd MORELANDS, 5-23 OLD STREET LONDON EC1V 9HL TEL 020 7251 5261 FAX 020 7251 5123 WEB WWW.AHMM.CO.UK</p> <p>job title</p> <p>BELGROVE HOUSE</p> <p>drawing title / location</p> <p>EAST CONTEXT ELEVATION - PROPOSED</p> <table><tr><td>drawn by</td><td>checked</td><td>scale</td><td>status</td></tr><tr><td>AHMM</td><td>HN</td><td>1 : 500 @A1</td><td>PLANNING</td></tr><tr><td>project</td><td>zone</td><td>source</td><td>classification</td></tr><tr><td>17002</td><td>P</td><td>A</td><td>(00)_P205</td></tr><tr><td></td><td></td><td></td><td>revision</td></tr><tr><td></td><td></td><td></td><td>P03</td></tr></table> | | drawn by | checked | scale | status | AHMM | HN | 1 : 500 @A1 | PLANNING | project | zone | source | classification | 17002 | P | A | (00)_P205 | | | | revision | | | | P03 |
|-----------------------|---|--|----------------|-----|------|-------------|-----|----------|----------|-----|----------|------------------|-----|----------|------------------|---|--|---------|---|-------------|--|------------------|-----|----------------------|-------|----------------------|-------------|------------------|--------|--------------------|------|------------------|------|-----------------------|-------|----------------------|-------------|--|--|--|--|--|--|---|--|---------------------|--|--|--|----------|---------|-------|--------|------|----|-------------|----------|---------|------|--------|----------------|-------|---|---|-----------|--|--|--|----------|--|--|--|-----|
| REV | DATE | DESCRIPTION | | | | | | | | | | | | | | | | | | | | | | | | | | | | | | | | | | | | | | | | | | | | | | | | | | | | | | | | | | | | | | | | | | | | | | | |
| P01 | 21/08/20 | PLANNING | | | | | | | | | | | | | | | | | | | | | | | | | | | | | | | | | | | | | | | | | | | | | | | | | | | | | | | | | | | | | | | | | | | | | | | |
| P02 | 05/11/20 | PLANNING REVISED | | | | | | | | | | | | | | | | | | | | | | | | | | | | | | | | | | | | | | | | | | | | | | | | | | | | | | | | | | | | | | | | | | | | | | | |
| P03 | 25/03/22 | PLANNING REVISED | | | | | | | | | | | | | | | | | | | | | | | | | | | | | | | | | | | | | | | | | | | | | | | | | | | | | | | | | | | | | | | | | | | | | | | |
| CLIENT: | PRECIS ADVISORY LTD / ACCESS SELF STORAGE | | | | | | | | | | | | | | | | | | | | | | | | | | | | | | | | | | | | | | | | | | | | | | | | | | | | | | | | | | | | | | | | | | | | | | | | |
| CONTRACTOR: | | | | | | | | | | | | | | | | | | | | | | | | | | | | | | | | | | | | | | | | | | | | | | | | | | | | | | | | | | | | | | | | | | | | | | | | | |
| PROJECT MANAGER: | CPC | | | | | | | | | | | | | | | | | | | | | | | | | | | | | | | | | | | | | | | | | | | | | | | | | | | | | | | | | | | | | | | | | | | | | | | | |
| STRUCTURAL ENGINEER: | AKTII | | | | | | | | | | | | | | | | | | | | | | | | | | | | | | | | | | | | | | | | | | | | | | | | | | | | | | | | | | | | | | | | | | | | | | | | |
| MECHANICAL ENGINEER: | ATELIER TEN | | | | | | | | | | | | | | | | | | | | | | | | | | | | | | | | | | | | | | | | | | | | | | | | | | | | | | | | | | | | | | | | | | | | | | | | |
| COST CONSULTANT: | ALINEA | | | | | | | | | | | | | | | | | | | | | | | | | | | | | | | | | | | | | | | | | | | | | | | | | | | | | | | | | | | | | | | | | | | | | | | | |
| FACADE CONSULTANT: | FMDC | | | | | | | | | | | | | | | | | | | | | | | | | | | | | | | | | | | | | | | | | | | | | | | | | | | | | | | | | | | | | | | | | | | | | | | | |
| FIRE CONSULTANT: | ARUP | | | | | | | | | | | | | | | | | | | | | | | | | | | | | | | | | | | | | | | | | | | | | | | | | | | | | | | | | | | | | | | | | | | | | | | | |
| LANDSCAPE CONSULTANT: | BHSLA | | | | | | | | | | | | | | | | | | | | | | | | | | | | | | | | | | | | | | | | | | | | | | | | | | | | | | | | | | | | | | | | | | | | | | | | |
| ACOUSTIC CONSULTANT: | SANDY BROWN | | | | | | | | | | | | | | | | | | | | | | | | | | | | | | | | | | | | | | | | | | | | | | | | | | | | | | | | | | | | | | | | | | | | | | | | |
| | | | | | | | | | | | | | | | | | | | | | | | | | | | | | | | | | | | | | | | | | | | | | | | | | | | | | | | | | | | | | | | | | | | | | | | | | |
| | | | | | | | | | | | | | | | | | | | | | | | | | | | | | | | | | | | | | | | | | | | | | | | | | | | | | | | | | | | | | | | | | | | | | | | | | |
| | | | | | | | | | | | | | | | | | | | | | | | | | | | | | | | | | | | | | | | | | | | | | | | | | | | | | | | | | | | | | | | | | | | | | | | | | |
| drawn by | checked | scale | status | | | | | | | | | | | | | | | | | | | | | | | | | | | | | | | | | | | | | | | | | | | | | | | | | | | | | | | | | | | | | | | | | | | | | | |
| AHMM | HN | 1 : 500 @A1 | PLANNING | | | | | | | | | | | | | | | | | | | | | | | | | | | | | | | | | | | | | | | | | | | | | | | | | | | | | | | | | | | | | | | | | | | | | | |
| project | zone | source | classification | | | | | | | | | | | | | | | | | | | | | | | | | | | | | | | | | | | | | | | | | | | | | | | | | | | | | | | | | | | | | | | | | | | | | | |
| 17002 | P | A | (00)_P205 | | | | | | | | | | | | | | | | | | | | | | | | | | | | | | | | | | | | | | | | | | | | | | | | | | | | | | | | | | | | | | | | | | | | | | |
| | | | revision | | | | | | | | | | | | | | | | | | | | | | | | | | | | | | | | | | | | | | | | | | | | | | | | | | | | | | | | | | | | | | | | | | | | | | |
| | | | P03 | | | | | | | | | | | | | | | | | | | | | | | | | | | | | | | | | | | | | | | | | | | | | | | | | | | | | | | | | | | | | | | | | | | | | | |

APPROVED



01050

| REV | DATE | DESCRIPTION |
|-----|----------|------------------|
| P01 | 21/08/20 | PLANNING |
| P02 | 05/11/20 | PLANNING REVISED |

| | |
|-----------------------|---|
| CLIENT: | PRECIS ADVISORY LTD / ACCESS SELF STORAGE |
| CONTRACTOR: | |
| PROJECT MANAGER: | |
| STRUCTURAL ENGINEER: | AKTII |
| MECHANICAL ENGINEER: | ATELIER TEN |
| COST CONSULTANT: | ALINEA |
| FACADE CONSULTANT: | FMDC |
| FIRE CONSULTANT: | BUREAU VERITAS |
| LANDSCAPE CONSULTANT: | BHSLA |
| ACOUSTIC CONSULTANT: | SANDY BROWN |
| | |
| | |
| | |

NOTE

When this drawing is issued in uncontrolled CAD format it will be accompanied by a PDF version and is issued to enable the recipient to prepare their own documents / models / drawings for which they are solely responsible.

The recipient should report all drawing errors, omissions and discrepancies to the architect. All dimensions should be checked on site by the contractor and such dimensions shall be the contractor's responsibility.

Allford Hall Monaghan Morris Limited accepts no responsibility or liability for:-

- any use of this drawing by parties other than the party for whom it was prepared or for purposes other than those for which it was prepared
- any alterations or additions to or discrepancies arising out of changes to the background information on which the drawings are based that was current at the time of issue, and which occur to that information after it has been issued by AHMM
- any loss or degradation of the information held in this drawing resulting from the translation from the original file format to any other file format or from the recipient's reading of it in any other programme or any version of the programme other than that which was used to prepare it
- the accuracy of survey information provided by others or for any costs, claims, proceedings and expenses arising out of reliance on such information
- any scaling from this drawing other than by the local planning authority solely for the purposes of the planning application to which it relates

LOCATION

ALLFORD HALL MONAGHAN MORRIS

ARCHITECTS Ltd
MORELANDS, 5-23 OLD STREET LONDON EC1V 9HL
TEL 020 7251 5261 FAX 020 7251 5123 WEB WWW.AHMM.CO.UK

Job title

17002 BELGROVE HOUSE

drawing title / location

SOUTH CONTEXT ELEVATION - PROPOSED

| drawn by | checked | scale | status |
|----------|---------|------------|----------|
| AHMM | HN | 1 : 500@A1 | PLANNING |

| project | zone | source | classification | drawing no. | revision |
|---------|------|--------|----------------|-------------|----------|
| 17002 | P | A | (00)_P206 | P02 | |

© Allford Hall Monaghan Morris Limited

PROPOSED



01050m

| REV | DATE | DESCRIPTION |
|-----|----------|------------------|
| P01 | 21/08/20 | PLANNING |
| P02 | 05/11/20 | PLANNING REVISED |
| P03 | 25/03/22 | PLANNING REVISED |

| | |
|-----------------------|---|
| CLIENT: | PRECIS ADVISORY LTD / ACCESS SELF STORAGE |
| CONTRACTOR: | |
| PROJECT MANAGER: | CPC |
| STRUCTURAL ENGINEER: | AKTII |
| MECHANICAL ENGINEER: | ATELIER TEN |
| COST CONSULTANT: | ALINEA |
| FACADE CONSULTANT: | FMDC |
| FIRE CONSULTANT: | ARUP |
| LANDSCAPE CONSULTANT: | BHSLA |
| ACOUSTIC CONSULTANT: | SANDY BROWN |
| | |
| | |
| | |

NOTE

When this drawing is issued in uncontrolled CAD format it will be accompanied by a PDF version and is issued to enable the recipient to prepare their own documents / models / drawings for which they are solely responsible.
The recipient should report all drawing errors, omissions and discrepancies to the architect. All dimensions should be checked on site by the contractor and such dimensions shall be the contractor's responsibility.

Allford Hall Monaghan Morris Limited accepts no responsibility or liability for:-
- any use of this drawing by parties other than the party for whom it was prepared or for purposes other than those for which it was prepared
- any alterations or additions to or discrepancies arising out of changes to the background information on which the drawings are based that was current at the time of issue, and which occur to that information after it has been issued by AHMM
- any loss or degradation of the information held in this drawing resulting from the translation from the original file format to any other file format or from the recipient's reading of it in any other programme or any version of the programme other than that which was used to prepare it
- the accuracy of survey information provided by others or for any costs, claims, proceedings and expenses arising out of reliance on such information
- any scaling from this drawing other than by the local planning authority solely for the purposes of the planning application to which it relates

LOCATION

ALLFORD HALL MONAGHAN MORRIS

ARCHITECTS Ltd
MORELANDS, 5-23 OLD STREET LONDON EC1V 9HL
TEL 020 7251 5261 FAX 020 7251 5123 WEB WWW.AHMM.CO.UK

job title

BELGROVE HOUSE

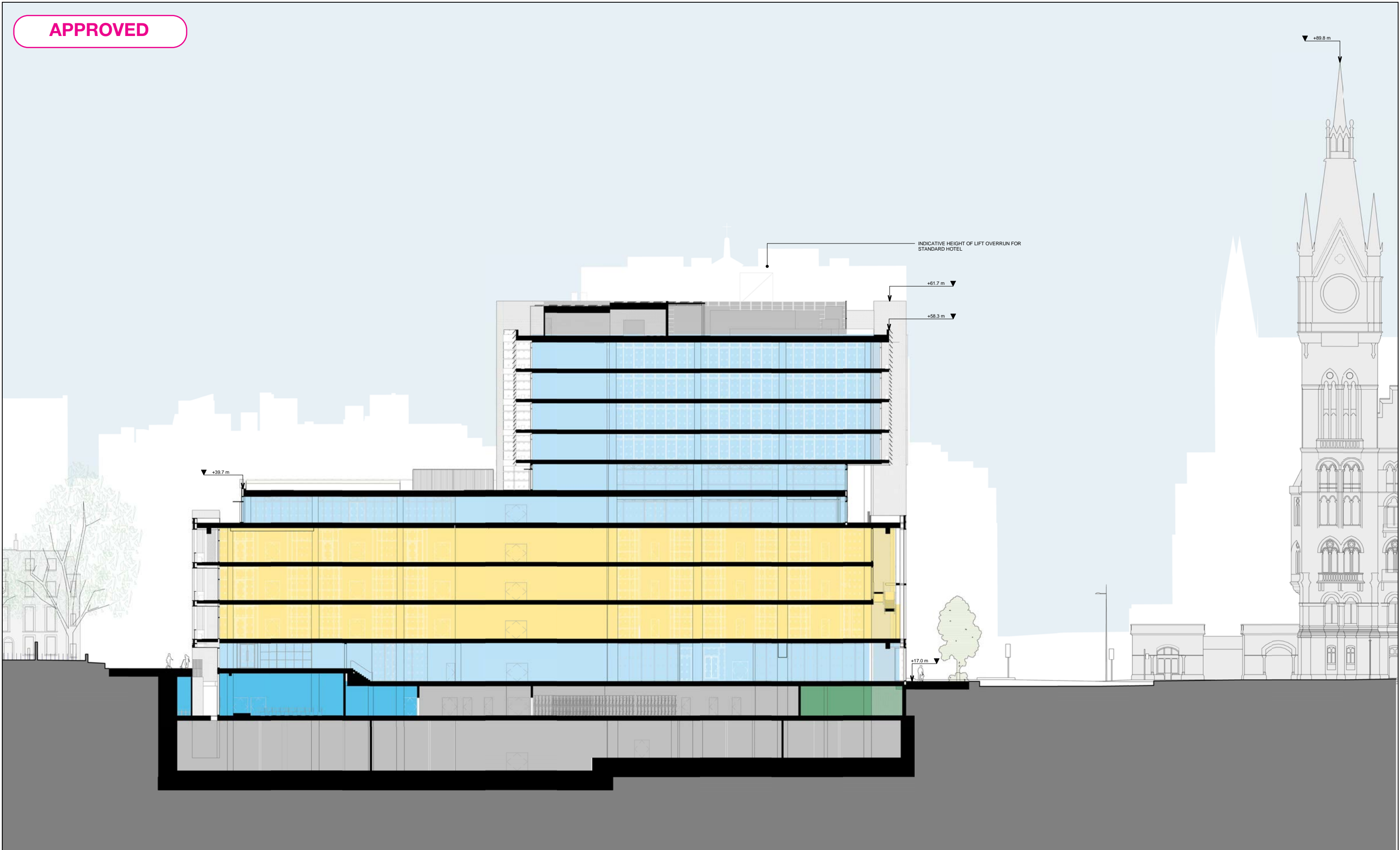
drawing title / location

SOUTH CONTEXT ELEVATION - PROPOSED

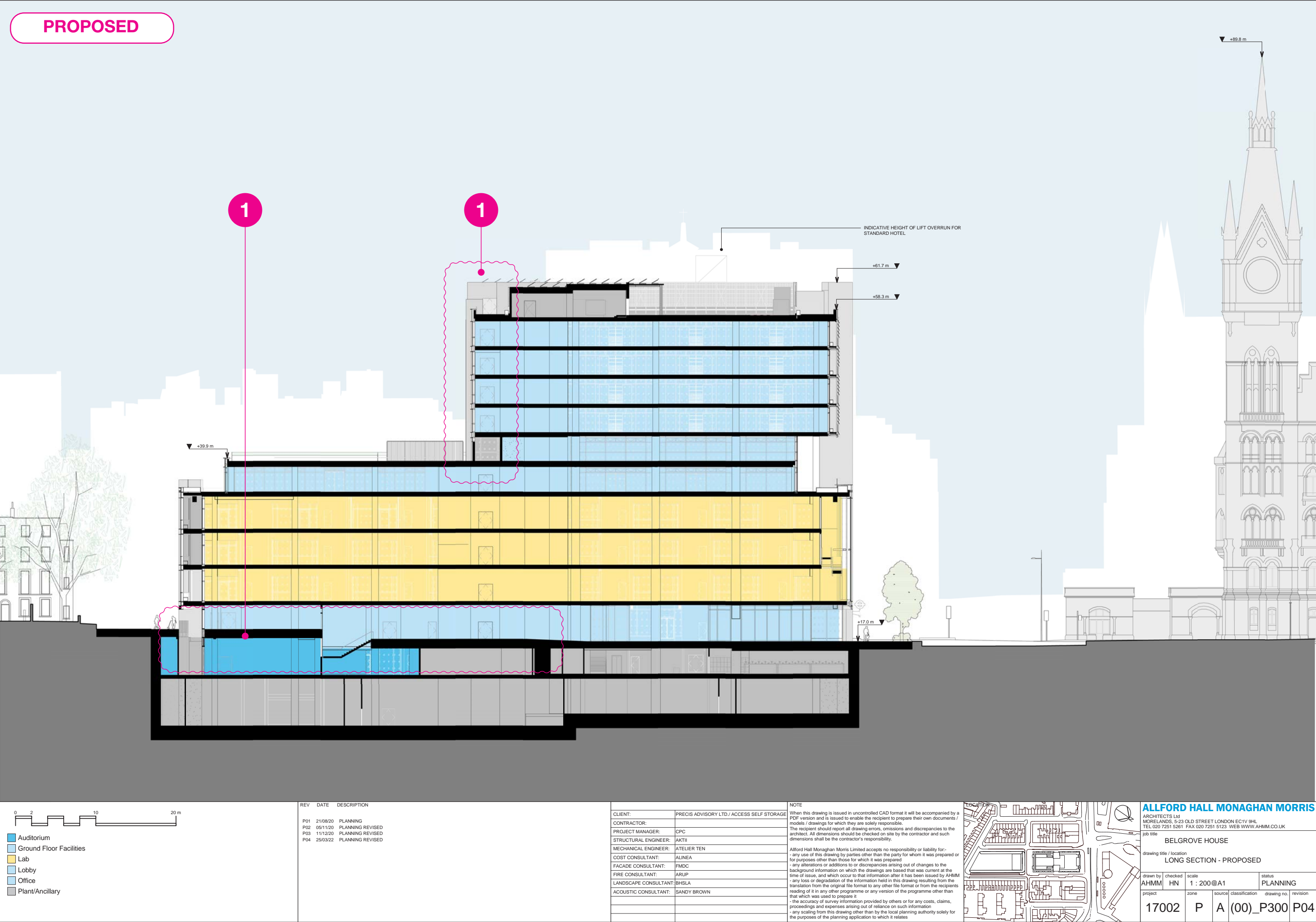
| | | | |
|----------|---------|-------------|----------------|
| drawn by | checked | scale | status |
| AHMM | HN | 1 : 500 @A1 | PLANNING |
| project | zone | source | classification |
| 17002 | P | A | (00)_P206 |
| | | | P03 |

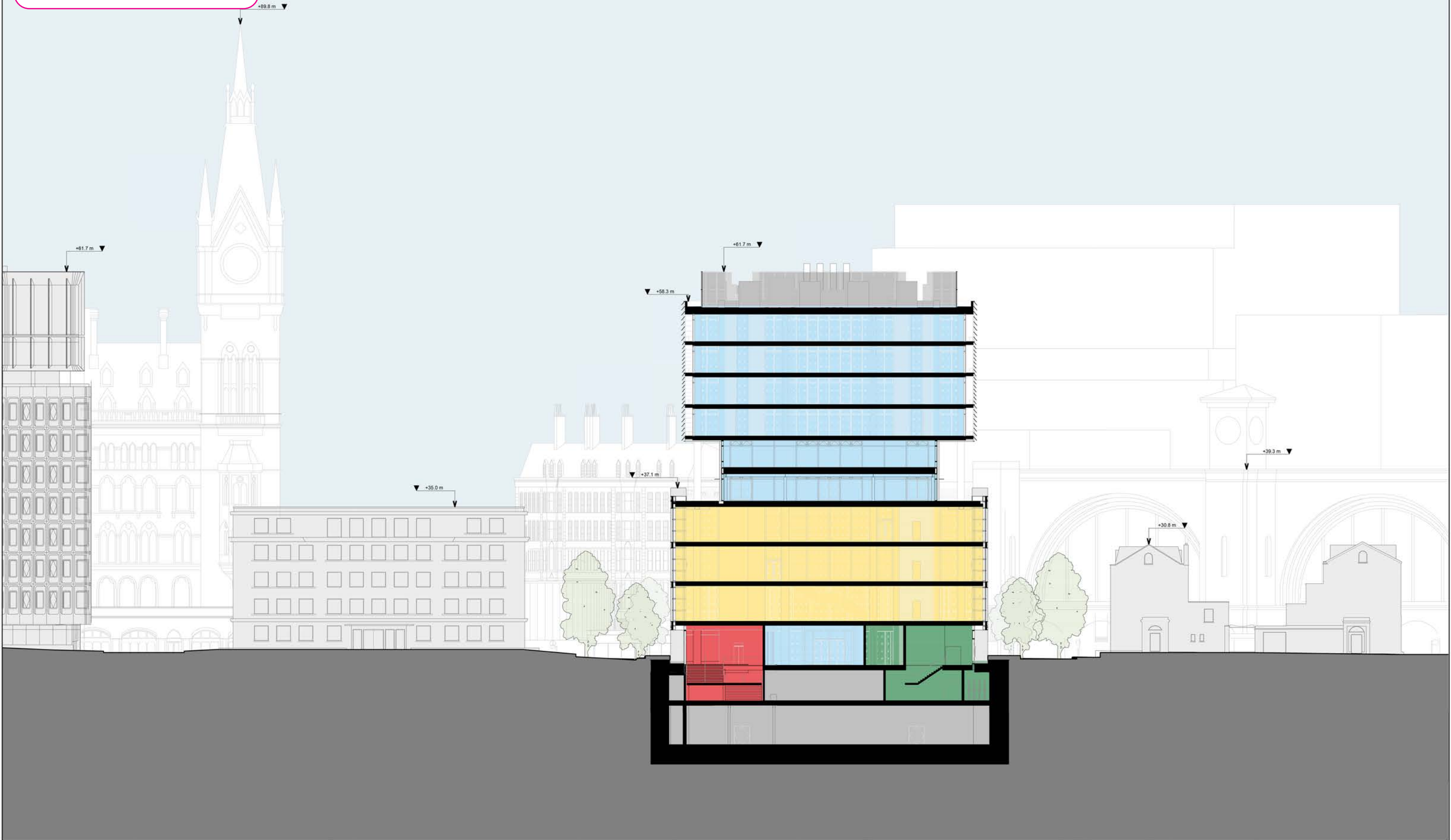
© Allford Hall Monaghan Morris Limited

APPROVED



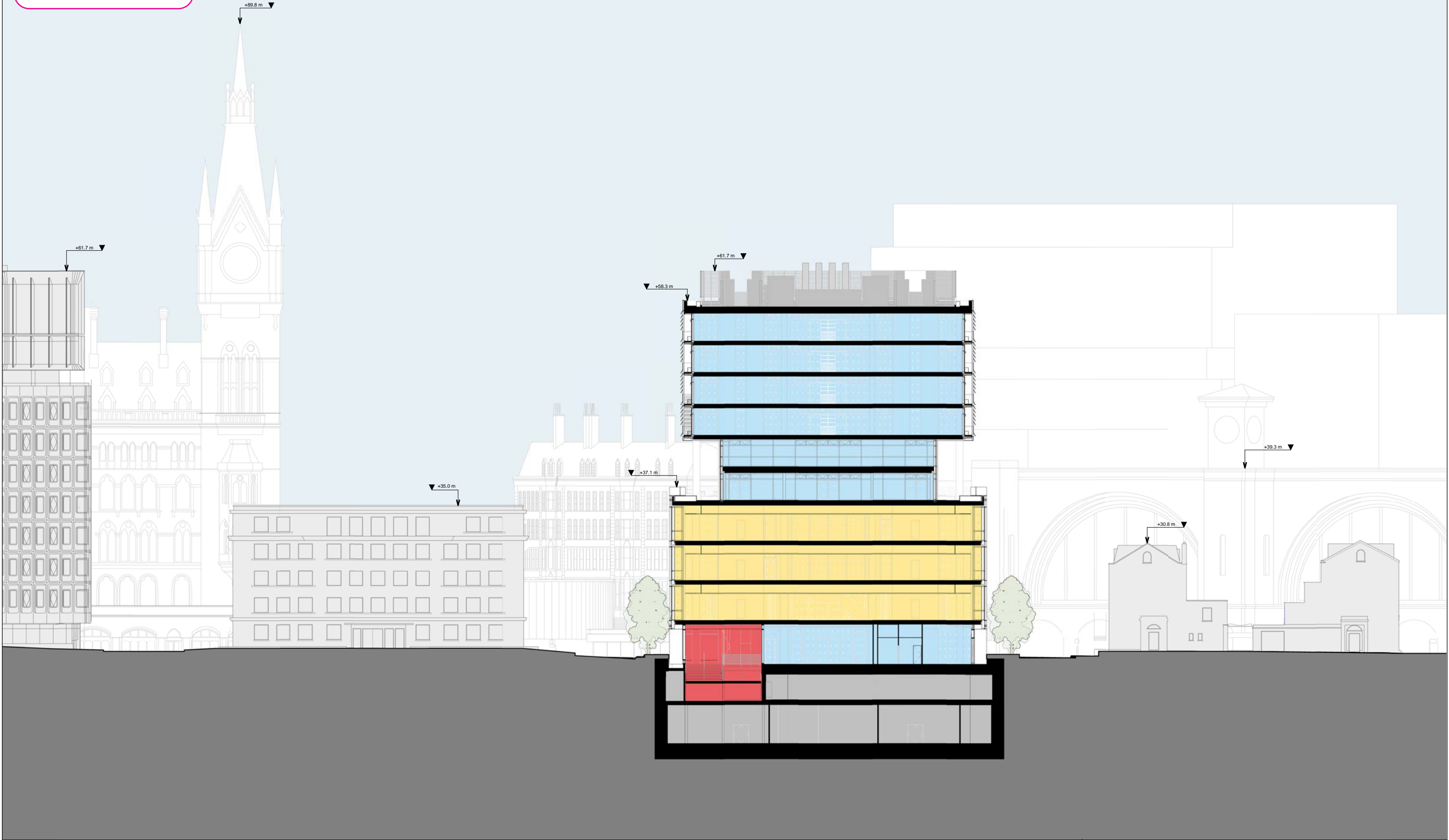
| <div>0210</div> <div>0 2 10 20 m</div> <div><div></div>Auditorium</div> <div><div></div>Ground Floor Facilities</div> <div><div></div>Lab</div> <div><div></div>Office</div> <div><div></div>Plant/Ancillary</div> <div><div></div>Retail</div> | | <table><tr><th>REV</th><th>DATE</th><th>DESCRIPTION</th></tr><tr><td>P01</td><td>21/08/20</td><td>PLANNING</td></tr><tr><td>P02</td><td>05/11/20</td><td>PLANNING REVISED</td></tr><tr><td>P03</td><td>11/12/20</td><td>PLANNING REVISED</td></tr></table> | | REV | DATE | DESCRIPTION | P01 | 21/08/20 | PLANNING | P02 | 05/11/20 | PLANNING REVISED | P03 | 11/12/20 | PLANNING REVISED | <table><tr><td>CLIENT:</td><td>PRECIS ADVISORY LTD / ACCESS SELF STORAGE</td></tr><tr><td>CONTRACTOR:</td><td></td></tr><tr><td>PROJECT MANAGER:</td><td>CPC</td></tr><tr><td>STRUCTURAL ENGINEER:</td><td>AKTII</td></tr><tr><td>MECHANICAL ENGINEER:</td><td>ATELIER TEN</td></tr><tr><td>COST CONSULTANT:</td><td>ALINEA</td></tr><tr><td>FACADE CONSULTANT:</td><td>FMDC</td></tr><tr><td>FIRE CONSULTANT:</td><td>BUREAU VERITAS</td></tr><tr><td>LANDSCAPE CONSULTANT:</td><td>BHSLA</td></tr><tr><td>ACOUSTIC CONSULTANT:</td><td>SANDY BROWN</td></tr><tr><td></td><td></td></tr><tr><td></td><td></td></tr><tr><td></td><td></td></tr></table> | | CLIENT: | PRECIS ADVISORY LTD / ACCESS SELF STORAGE | CONTRACTOR: | | PROJECT MANAGER: | CPC | STRUCTURAL ENGINEER: | AKTII | MECHANICAL ENGINEER: | ATELIER TEN | COST CONSULTANT: | ALINEA | FACADE CONSULTANT: | FMDC | FIRE CONSULTANT: | BUREAU VERITAS | LANDSCAPE CONSULTANT: | BHSLA | ACOUSTIC CONSULTANT: | SANDY BROWN | | | | | | | <p>NOTE</p> <p>When this drawing is issued in uncontrolled CAD format it will be accompanied by a PDF version and is issued to enable the recipient to prepare their own documents / models / drawings for which they are solely responsible.</p> <p>The recipient should report all drawing errors, omissions and discrepancies to the architect. All dimensions should be checked on site by the contractor and such dimensions shall be the contractor's responsibility.</p> <p>Allford Hall Monaghan Morris Limited accepts no responsibility or liability for:-</p> <ul style="list-style-type: none">- any use of this drawing by parties other than the party for whom it was prepared or for purposes other than those for which it was prepared- any alterations or additions to or discrepancies arising out of changes to the background information on which the drawings are based that was current at the time of issue, and which occur to that information after it has been issued by AHMM- any loss or degradation of the information held in this drawing resulting from the translation from the original file format to any other file format or from the recipient's reading of it in any other programme or any version of the programme other than that which was used to prepare it- the accuracy of survey information provided by others or for any costs, claims, proceedings and expenses arising out of reliance on such information- any scaling from this drawing other than by the local planning authority solely for the purposes of the planning application to which it relates | | <div>LOCATION</div> <div></div> | | <div>ALLFORD HALL MONAGHAN MORRIS</div> <div>ARCHITECTS Ltd</div> <div>MORELANDS, 5-23 OLD STREET LONDON EC1V 9HL</div> <div>TEL 020 7251 5261 FAX 020 7251 5123 WEB WWW.AHMM.CO.UK</div> <div>job title</div> <div>17002 BELGROVE HOUSE</div> <div>drawing title / location</div> <div>LONG SECTION - PROPOSED</div> <table><tr><td>drawn by</td><td>checked</td><td>scale</td><td>status</td></tr><tr><td>AHMM</td><td>HN</td><td>1 : 200 @A1</td><td>PLANNING</td></tr><tr><td>project</td><td>zone</td><td>source</td><td>classification</td></tr><tr><td>17002</td><td>P</td><td>A</td><td>(00)_P300 P03</td></tr></table> | | drawn by | checked | scale | status | AHMM | HN | 1 : 200 @A1 | PLANNING | project | zone | source | classification | 17002 | P | A | (00)_P300 P03 |
|---|---|--|----------------|-----|------|-------------|-----|----------|----------|-----|----------|------------------|-----|----------|------------------|---|--|---------|---|-------------|--|------------------|-----|----------------------|-------|----------------------|-------------|------------------|--------|--------------------|------|------------------|----------------|-----------------------|-------|----------------------|-------------|--|--|--|--|--|--|--|--|---------------------------------|--|---|--|----------|---------|-------|--------|------|----|-------------|----------|---------|------|--------|----------------|-------|---|---|---------------|
| REV | DATE | DESCRIPTION | | | | | | | | | | | | | | | | | | | | | | | | | | | | | | | | | | | | | | | | | | | | | | | | | | | | | | | | | | | | | | | |
| P01 | 21/08/20 | PLANNING | | | | | | | | | | | | | | | | | | | | | | | | | | | | | | | | | | | | | | | | | | | | | | | | | | | | | | | | | | | | | | | |
| P02 | 05/11/20 | PLANNING REVISED | | | | | | | | | | | | | | | | | | | | | | | | | | | | | | | | | | | | | | | | | | | | | | | | | | | | | | | | | | | | | | | |
| P03 | 11/12/20 | PLANNING REVISED | | | | | | | | | | | | | | | | | | | | | | | | | | | | | | | | | | | | | | | | | | | | | | | | | | | | | | | | | | | | | | | |
| CLIENT: | PRECIS ADVISORY LTD / ACCESS SELF STORAGE | | | | | | | | | | | | | | | | | | | | | | | | | | | | | | | | | | | | | | | | | | | | | | | | | | | | | | | | | | | | | | | | |
| CONTRACTOR: | | | | | | | | | | | | | | | | | | | | | | | | | | | | | | | | | | | | | | | | | | | | | | | | | | | | | | | | | | | | | | | | | |
| PROJECT MANAGER: | CPC | | | | | | | | | | | | | | | | | | | | | | | | | | | | | | | | | | | | | | | | | | | | | | | | | | | | | | | | | | | | | | | | |
| STRUCTURAL ENGINEER: | AKTII | | | | | | | | | | | | | | | | | | | | | | | | | | | | | | | | | | | | | | | | | | | | | | | | | | | | | | | | | | | | | | | | |
| MECHANICAL ENGINEER: | ATELIER TEN | | | | | | | | | | | | | | | | | | | | | | | | | | | | | | | | | | | | | | | | | | | | | | | | | | | | | | | | | | | | | | | | |
| COST CONSULTANT: | ALINEA | | | | | | | | | | | | | | | | | | | | | | | | | | | | | | | | | | | | | | | | | | | | | | | | | | | | | | | | | | | | | | | | |
| FACADE CONSULTANT: | FMDC | | | | | | | | | | | | | | | | | | | | | | | | | | | | | | | | | | | | | | | | | | | | | | | | | | | | | | | | | | | | | | | | |
| FIRE CONSULTANT: | BUREAU VERITAS | | | | | | | | | | | | | | | | | | | | | | | | | | | | | | | | | | | | | | | | | | | | | | | | | | | | | | | | | | | | | | | | |
| LANDSCAPE CONSULTANT: | BHSLA | | | | | | | | | | | | | | | | | | | | | | | | | | | | | | | | | | | | | | | | | | | | | | | | | | | | | | | | | | | | | | | | |
| ACOUSTIC CONSULTANT: | SANDY BROWN | | | | | | | | | | | | | | | | | | | | | | | | | | | | | | | | | | | | | | | | | | | | | | | | | | | | | | | | | | | | | | | | |
| | | | | | | | | | | | | | | | | | | | | | | | | | | | | | | | | | | | | | | | | | | | | | | | | | | | | | | | | | | | | | | | | | |
| | | | | | | | | | | | | | | | | | | | | | | | | | | | | | | | | | | | | | | | | | | | | | | | | | | | | | | | | | | | | | | | | | |
| | | | | | | | | | | | | | | | | | | | | | | | | | | | | | | | | | | | | | | | | | | | | | | | | | | | | | | | | | | | | | | | | | |
| drawn by | checked | scale | status | | | | | | | | | | | | | | | | | | | | | | | | | | | | | | | | | | | | | | | | | | | | | | | | | | | | | | | | | | | | | | |
| AHMM | HN | 1 : 200 @A1 | PLANNING | | | | | | | | | | | | | | | | | | | | | | | | | | | | | | | | | | | | | | | | | | | | | | | | | | | | | | | | | | | | | | |
| project | zone | source | classification | | | | | | | | | | | | | | | | | | | | | | | | | | | | | | | | | | | | | | | | | | | | | | | | | | | | | | | | | | | | | | |
| 17002 | P | A | (00)_P300 P03 | | | | | | | | | | | | | | | | | | | | | | | | | | | | | | | | | | | | | | | | | | | | | | | | | | | | | | | | | | | | | | |





| | |
|--|--|
| <div><div><div></div><div></div><div></div><div></div><div></div><div></div><div></div><div></div><div></div><div></div><div></div><div></div><div></div><div></div><div></div><div></div><div></div><div></div><div></div><div></div><div></div><div></div><div></div><div></div><div></div><div></div><div></div><div></div><div></div><div></div><div></div><div></div><div></div><div></div><div></div><div></div><div></div><div></div><div></div><div></div><div></div><div></div><div></div><div></div><div></div><div></div><div></div><div></div><div></div><div></div><div></div><div></div><div></div><div></div><div></div><div></div><div></div><div></div><div></div><div></div><div></div><div></div><div></div><div></div><div></div><div></div><div></div><div></div><div></div><div></div><div></div><div></div><div></div><div></div><div></div><div></div><div></div><div></div><div></div><div></div><div></div><div></div><div></div><div></div><div></div><div></div><div></div><div></div><div></div><div></div><div></div><div></div><div></div><div></div><div></div><div></div><div></div><div></div><div></div><div></div><div></div><div></div><div></div><div></div><div></div><div></div><div></div><div></div><div></div><div></div><div></div><div></div><div></div><div></div><div></div><div></div><div></div><div></div><div></div><div></div><div></div><div></div><div></div><div></div><div></div><div></div><div></div><div></div><div></div><div></div><div></div><div></div><div></div><div></div><div></div><div></div><div></div><div></div><div></div><div></div><div></div><div></div><div></div><div></div><div></div><div></div><div></div><div></div><div></div><div></div><div></div><div></div><div></div><div></div><div></div><div></div><div></div><div></div><div></div><div></div><div></div><div></div><div></div><div></div><div></div><div></div><div></div><div></div><div></div><div></div><div></div><div></div><div></div><div></div><div></div><div></div><div></div><div></div><div></div><div></div><div></div><div></div><div></div><div></div><div></div><div></div><div></div><div></div><div></div><div></div><div></div><div></div><div></div><div></div><div></div><div></div><div></div><div></div><div></div><div></div><div></div><div></div><div></div><div></div><div></div><div></div><div></div><div></div><div></div><div></div><div></div><div></div><div></div><div></div><div></div><div></div><div></div><div></div><div></div><div></div><div></div><div></div><div></div><div></div><div></div><div></div><div></div><div></div><div></div><div></div><div></div><div></div><div></div><div></div><div></div><div></div><div></div><div></div><div></div><div></div><div></div><div></div><div></div><div></div><div></div><div></div><div></div><div></div><div></div><div></div><div></div><div></div><div></div><div></div><div></div><div></div><div></div><div></div><div></div><div></div><div></div><div></div><div></div><div></div><div></div><div></div><div></div><div></div><div></div><div></div><div></div><div></div><div></div><div></div><div></div><div></div><div></div><div></div><div></div><div></div><div></div><div></div><div></div><div></div><div></div><div></div><div></div><div></div><div></div><div></div><div></div><div></div><div></div><div></div><div></div><div></div><div></div><div></div><div></div><div></div><div></div><div></div><div></div><div></div><div></div><div></div><div></div><div></div><div></div><div></div><div></div><div></div><div></div><div></div><div></div><div></div><div></div><div></div><div></div><div></div><div></div><div></div><div></div><div></div><div></div><div></div><div></div><div></div><div></div><div></div><div></div><div></div><div></div><div></div><div></div><div></div><div></div><div></div><div></div><div></div><div></div><div></div><div></div><div></div><div></div><div></div><div></div><div></div><div></div><div></div><div></div><div></div><div></div><div></div><div></div><div></div><div></div><div></div><div></div><div></div><div></div><div></div><div></div><div></div><div></div><div></div><div></div><div></div><div></div><div></div><div></div><div></div><div></div><div></div><div></div><div></div><div></div><div></div><div></div><div></div><div></div><div></div><div></div><div></div><div></div><div></div><div></div><div></div><div></div><div></div><div></div><div></div><div></div><div></div><div></div><div></div><div></div><div></div><div></div><div></div><div></div><div></div><div></div><div></div><div></div><div></div><div></div><div></div><div></div><div></div><div></div><div></div><div></div><div></div><div></div><div></div><div></div><div></div><div></div><div></div><div></div><div></div><div></div><div></div><div></div><div></div><div></div><div></div><div></div><div></div><div></div><div></div><div></div><div></div><div></div><div></div><div></div><div></div><div></div><div></div><div></div><div></div><div></div><div></div><div></div><div></div><div></div><div></div><div></div><div></div><div></div><div></div><div></div><div></div><div></div><div></div><div></div><div></div><div></div><div></div><div></div><div></div><div></div><div></div><div></div><div></div><div></div><div></div><div></div><div></div><div></div><div></div><div></div><div></div><div></div><div></div><div></div><div></div><div></div><div></div><div></div><div></div><div></div><div></div><div></div><div></div><div></div><div></div><div></div><div></div><div></div><div></div><div></div><div></div><div></div><div></div><div></div><div></div><div></div><div></div><div></div><div></div><div></div><div></div><div></div><div></div><div></div><div></div><div></div><div></div><div></div><div></div><div></div><div></div><div></div><div></div><div></div><div></div><div></div><div></div><div></div><div></div><div></div><div></div><div></div><div></div><div></div><div></div><div></div><div></div><div></div><div></div><div></div><div></div><div></div><div></div><div></div><div></div><div></div><div></div><div></div><div></div><div></div><div></div><div></div><div></div><div></div><div></div><div></div><div></div><div></div><div></div><div></div><div></div><div></div><div></div><div></div><div></div><div></div><div></div><div></div><div></div><div></div><div></div><div></div><div></div><div></div><div></div><div></div><div></div><div></div><div></div><div></div><div></div><div></div><div></div><div></div><div></div><div></div><div></div><div></div><div></div><div></div><div></div><div></div><div></div><div></div><div></div><div></div><div></div><div></div><div></div><div></div><div></div><div></div><div></div><div></div><div></div><div></div><div></div><div></div><div></div><div></div><div></div><div></div><div></div><div></div><div></div><div></div><div></div><div></div><div></div><div></div><div></div><div></div><div></div><div></div><div></div><div></div><div></div><div></div><div></div><div></div><div></div><div></div><div></div><div></div><div></div><div></div><div></div><div></div><div></div><div></div><div></div><div></div><div></div><div></div><div></div><div></div><div></div><div></div><div></div><div></div><div></div><div></div><div></div><div></div><div></div><div></div><div></div><div></div><div></div><div></div><div></div><div></div><div></div><div></div><div></div><div></div><div></div><div></div><div></div><div></div><div></div><div></div><div></div><div></div><div></div><div></div><div></div><div></div><div></div><div></div><div></div><div></div><div></div><div></div><div></div><div></div><div></div><div></div><div></div><div></div><div></div><div></div><div></div><div></div><div></div><div></div><div></div><div></div><div></div><div></div><div></div><div></div><div></div><div></div><div></div><div></div><div></div><div></div><div></div><div></div><div></div><div></div><div></div><div></div><div></div><div></div><div></div><div></div><div></div><div></div><div></div><div></div><div></div><div></div><div></div><div></div><div></div><div></div><div></div><div></div><div></div><div></div><div></div><div></div><div></div><div></div><div></div><div></div><div></div><div></div><div></div><div></div><div></div><div></div><div></div><div></div><div></div><div></div><div></div><div></div><div></div><div></div><div></div><div></div><div></div><div></div><div></div><div></div><div></div><div></div><div></div><div></div><div></div><div></div><div></div><div></div><div></div><div></div><div></div><div></div><div></div><div></div><div></div><div></div><div></div><div></div><div></div><div></div><div></div><div></div><div></div><div></div><div></div><div></div><div></div><div></div><div></div><div></div><div></div><div></div><div></div><div></div><div></div><div></div><div></div><div></div><div></div><div></div><div></div><div></div><div></div><div></div><div></div><div></div><div></div><div></div><div></div><div></div><div></div><div></div><div></div><div></div><div></div><div></div><div></div><div></div><div></div><div></div><div></div><div></div><div></div><div></div><div></div><div></div><div></div><div></div><div></div><div></div><div></div><div></div><div></div><div></div><div></div><div></div><div></div><div></div><div></div><div></div><div></div><div></div><div></div><div></div><div></div><div></div><div></div><div></div><div></div><div></div><div></div><div></div><div></div><div></div><div></div><div></div><div></div><div></div><div></div><div></div><div></div><div></div><div></div><div></div><div></div><div></div><div></div><div></div><div></div><div></div><div></div><div></div><div></div><div></div><div></div><div></div><div></div><div></div><div></div><div></div><div></div><div></div><div></div><div></div><div></div><div></div><div></div><div></div><div></div><div></div><div></div><div></div><div></div><div></div><div></div><div></div><div></div><div></div><div></div><div></div><div></div><div></div><div></div><div></div><div></div><div></div><div></div><div></div><div></div><div></div><div></div><div></div><div></div><div></div><div></div><div></div><div></div><div></div><div></div><div></div><div></div><div></div><div></div><div></div><div></div><div></div><div></div><div></div><div></div><div></div><div></div><div></div><div></div><div></div><div></div><div></div><div></div><div></div><div></div><div></div><div></div><div></div><div></div><div></div><div></div><div></div><div></div><div></div><div></div><div></div><div></div><div></div><div></div><div></div><div></div><div></div><div></div><div></div><div></div><div></div><div></div><div></div><div></div><div></div><div></div><div></div><div></div><div></div><div></div><div></div><div></div><div></div><div></div><div></div><div></div><div></div><div></div><div></div><div></div><div></div><div></div><div></div><div></div><div></div><div></div><div></div><div></div><div></div><div></div><div></div><div></div><div></div><div></div><div></div><div></div><div></div><div></div><div></div><div></div><div></div><div></div><div></div><div></div><div></div><div></div><div></div><div></div><div></div><div></div><div></div><div></div><div></div><div></div><div></div><div></div><div></div><div></div><div></div><div></div><div></div><div></div><div></div><div></div><div></div><div></div><div></div><div></div><div></div><div></div><div></div><div></div><div></div><div></div><div></div><div></div><div></div><div></div><div></div><div></div><div></div><div></div><div></div><div></div><div></div><div></div><div></div><div></div><div></div><div></div><div></div><div></div><div></div><div></div><div></div><div></div><div></div><div></div><div></div><div></div><div></div><div></div><div></div><div></div><div></div><div></div><div></div><div></div><div></div><div></div><div></div><div></div><div></div><div></div><div></div><div></div><div></div><div></div><div></div><div></div><div></div><div></div><div></div><div></div><div></div><div></div><div></div><div></div><div></div><div></div><div></div><div></div><div></div><div></div><div></div><div></div><div></div><div></div><div></div><div></div><div></div><div></div><div></div><div></div><div></div><div></div><div></div><div></div><div></div><div></div><div></div><div></div><div></div><div></div><div></div><div></div><div></div><div></div><div></div><div></div><div></div><div></div><div></div><div></div><div></div><div></div><div></div><div></div><div></div><div></div><div></div><div></div><div></div><div></div><div></div><div></div><div></div><div></div><div></div><div></div><div></div><div></div><div></div><div></div><div></div><div></div><div></div><div></div><div></div><div></div><div></div><div></div><div></div><div></div><div></div><div></div><div></div><div></div><div></div><div></div><div></div><div></div><div></div><div></div><div></div><div></div><div></div><div></div><div></div><div></div><div></div><div></div><div></div><div></div><div></div><div></div><div></div><div></div><div></div><div></div><div></div><div></div><div></div><div></div><div></div><div></div><div></div><div></div><div></div><div></div><div></div><div></div><div></div><div></div><div></div><div></div><div></div><div></div><div></div><div></div><div></div><div></div><div></div><div></div><div></div><div></div><div></div><div></div><div></div><div></div><div></div><div></div><div></div><div></div><div></div><div></div><div></div><div></div><div></div><div></div><div></div><div></div><div></div><div></div><div></div><div></div><div></div><div></div><div></div><div></div><div></div><div></div><div></div><div></div><div></div><div></div><div></div><div></div><div></div><div></div><div></div><div></div><div></div><div></div><div></div><div></div><div></div><div></div><div></div><div></div><div></div><div></div><div></div><div></div><div></div><div></div><div></div><div></div><div></div><div></div><div></div><div></div><div></div><div></div><div></div><div></div><div></div><div></div><div></div><div></div><div></div><div></div><div></div><div></div><div></div><div></div><div></div><div></div><div></div><div></div><div></div><div></div><div></div><div></div><div></div><div></div><div></div><div></div><div></div><div></div><div></div><div></div><div></div><div></div><div></div><div></div><div></div><div></div><div></div><div></div><div></div><div></div><div></div><div></div><div></div><div></div><div></div><div></div><div></div><div></div><div></div><div></div><div></div><div></div><div></div><div></div><div></div><div></div><div></div><div></div><div></div><div></div><div></div><div></div><div></div><div></div><div></div><div></div><div></div><div></div><div></div><div></div><div></div><div></div><div></div><div></div><div></div><div></div><div></div><div></div><div></div><div></div><div></div><div></div><div></div><div></div><div></div><div></div><div></div><div></div><div></div><div></div><div></div><div></div><div></div><div></div><div></div><div></div><div></div><div></div><div></div><div></div><div></div><div></div><div></div><div></div><div></div><div></div><div></div><div></div><div></div><div></div><div></div><div></div><div></div><div></div><div></div><div></div><div></div><div></div><div></div><div></div><div></div><div></div><div></div><div></div><div></div><div></div><div></div><div></div><div></div><div></div><div></div><div></div><div></div><div></div><div></div><div></div><div></div><div></div><div></div><div></div><div></div><div></div><div></div><div></div><div></div><div></div><div></div><div></div><div></div><div></div><div></div><div></div><div></div><div></div></div></div> | |
|--|--|

PROPOSED



021020

2

10

20 m

Ground Floor Facilities

Lab

Lobby

Office

Plant/Ancillary

TFL

| REV | DATE | DESCRIPTION |
|-----|----------|------------------|
| P01 | 21/08/20 | PLANNING |
| P02 | 05/11/20 | PLANNING REVISED |
| P03 | 11/12/20 | PLANNING REVISED |
| P04 | 25/11/21 | PLANNING REVISED |
| P05 | 25/03/22 | PLANNING REVISED |

| | |
|-----------------------|---|
| CLIENT: | PRECIS ADVISORY LTD / ACCESS SELF STORAGE |
| CONTRACTOR: | |
| PROJECT MANAGER: | CPC |
| STRUCTURAL ENGINEER: | AKTII |
| MECHANICAL ENGINEER: | ATELIER TEN |
| COST CONSULTANT: | ALINEA |
| FACADE CONSULTANT: | FMDC |
| FIRE CONSULTANT: | ARUP |
| LANDSCAPE CONSULTANT: | BHSLA |
| ACOUSTIC CONSULTANT: | SANDY BROWN |
| | |
| | |

NOTE

When this drawing is issued in uncontrolled CAD format it will be accompanied by a PDF version and is issued to enable the recipient to prepare their own documents / models / drawings for which they are solely responsible.

The recipient should report all drawing errors, omissions and discrepancies to the architect. All dimensions should be checked on site by the contractor and such dimensions shall be the contractor's responsibility.

Allford Hall Monaghan Morris Limited accepts no responsibility or liability for:-

- any use of this drawing by parties other than the party for whom it was prepared or for purposes other than those for which it was prepared
- any alterations or additions to or discrepancies arising out of changes to the background information on which the drawings are based that was current at the time of issue, and which occur to that information after it has been issued by AHMM
- any loss or degradation of the information held in this drawing resulting from the translation from the original file format to any other file format or from the recipient's reading of it in any other programme or any version of the programme other than that which was used to prepare it
- the accuracy of survey information provided by others or for any costs, claims, proceedings and expenses arising out of reliance on such information
- any scaling from this drawing other than by the local planning authority solely for the purposes of the planning application to which it relates

LOCATION

ALLFORD HALL MONAGHAN MORRIS

ARCHITECTS Ltd

MORELANDS, 5-23 OLD STREET LONDON EC1V 9HL

TEL 020 7251 5261 FAX 020 7251 5123 WEB WWW.AHMM.CO.UK

job title

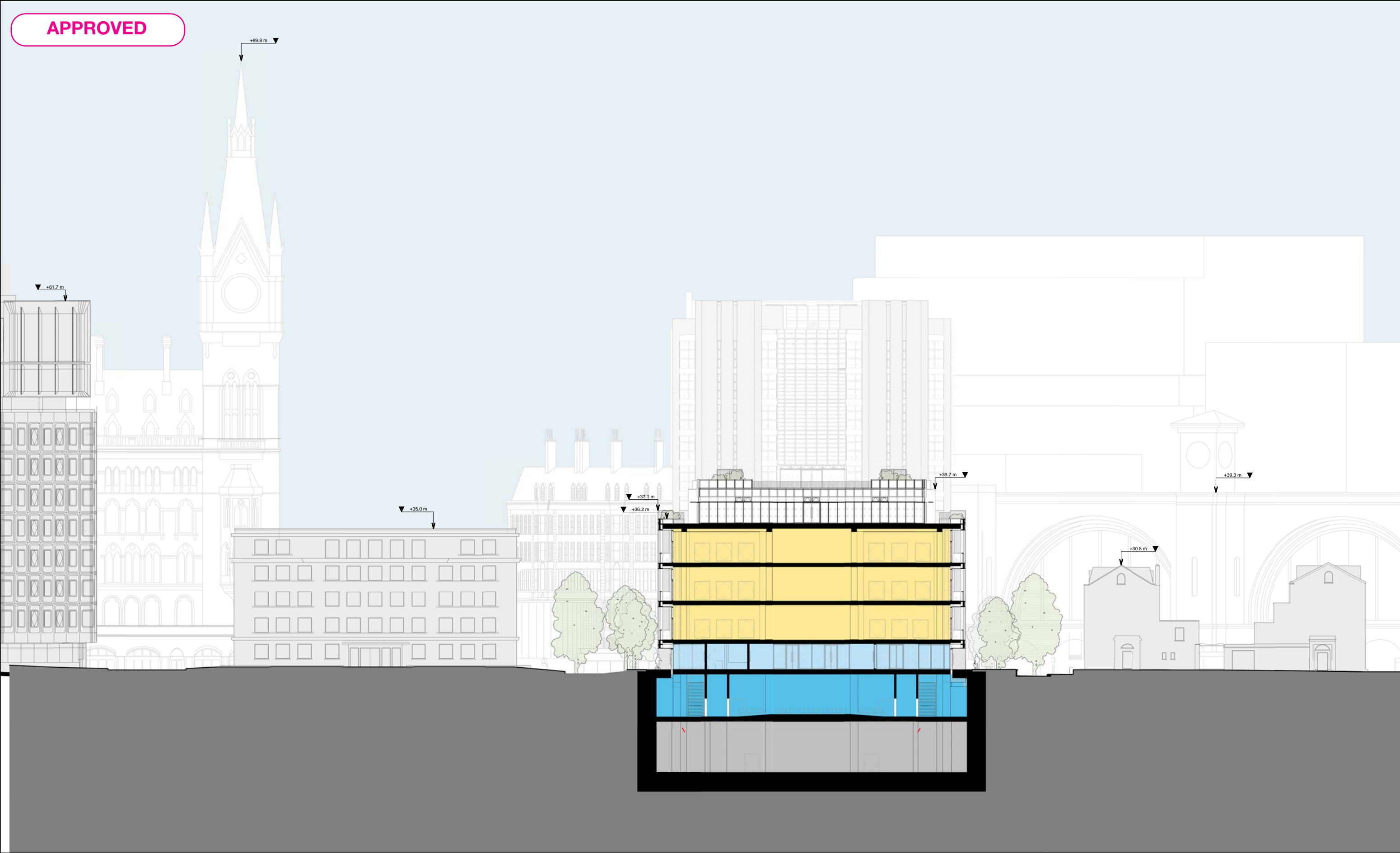
BELGROVE HOUSE

drawing title / location

SHORT SECTION N.1 - PROPOSED

| | | | |
|----------|---------|-------------|----------------|
| drawn by | checked | scale | status |
| AHMM | HN | 1 : 200 @A1 | PLANNING |
| project | zone | source | classification |
| 17002 | P | A | (00)_P301 |
| | | | P04 |

© Allford Hall Monaghan Morris Limited



021020

02

10

20 m

Auditorium

Ground Floor Facilities

Lab

Plant/Ancillary

| REV | DATE | DESCRIPTION |
|-----|----------|------------------|
| P01 | 21/08/20 | PLANNING |
| P02 | 05/11/20 | PLANNING REVISED |
| P03 | 11/12/20 | PLANNING REVISED |

| | |
|-----------------------|---|
| CLIENT: | PRECIS ADVISORY LTD / ACCESS SELF STORAGE |
| CONTRACTOR: | |
| PROJECT MANAGER: | CPC |
| STRUCTURAL ENGINEER: | AKTII |
| MECHANICAL ENGINEER: | ATELIER TEN |
| COST CONSULTANT: | ALINEA |
| FACADE CONSULTANT: | FMDC |
| FIRE CONSULTANT: | BUREAU VERITAS |
| LANDSCAPE CONSULTANT: | BHSLA |
| ACOUSTIC CONSULTANT: | SANDY BROWN |
| | |
| | |
| | |

NOTE

When this drawing is issued in uncontrolled CAD format it will be accompanied by a PDF version and is issued to enable the recipient to prepare their own documents / models / drawings for which they are solely responsible.

The recipient should report all drawing errors, omissions and discrepancies to the architect. All dimensions should be checked on site by the contractor and such dimensions shall be the contractor's responsibility.

Allford Hall Monaghan Morris Limited accepts no responsibility or liability for:-

- any use of this drawing by parties other than the party for whom it was prepared or for purposes other than those for which it was prepared
- any alterations or additions to or discrepancies arising out of changes to the background information on which the drawings are based that was current at the time of issue, and which occur to that information after it has been issued by AHMM
- any loss or degradation of the information held in this drawing resulting from the translation from the original file format to any other file format or from the recipient's reading of it in any other programme or any version of the programme other than that which was used to prepare it
- the accuracy of survey information provided by others or for any costs, claims, proceedings and expenses arising out of reliance on such information
- any scaling from this drawing other than by the local planning authority solely for the purposes of the planning application to which it relates

LOCATION

ALLFORD HALL MONAGHAN MORRIS

ARCHITECTS Ltd
MORELANDS, 5-23 OLD STREET LONDON EC1V 9HL
TEL 020 7251 5261 FAX 020 7251 5123 WEB WWW.AHMM.CO.UK

job title

17002 BELGROVE HOUSE

drawing title / location

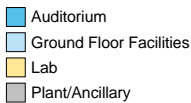
SHORT SECTION N.2 - PROPOSED

| drawn by | checked | scale | status |
|----------|---------|------------|----------|
| AHMM | HN | 1 : 200@A1 | PLANNING |

| project | zone | source | classification | drawing no. | revision |
|---------|------|--------|----------------|-------------|----------|
| 17002 | P | A | (00)_P302 | P03 | |

© Allford Hall Monaghan Morris Limited

This architectural elevation drawing illustrates a proposed building within its urban context. The proposed building, highlighted in yellow, is a multi-story structure with a modern design, featuring a glass facade on the upper floors and a solid base. It is situated between existing buildings, including a historic church with a prominent spire on the left and a large, classical-style building with arches on the right. The drawing includes various elevation markers and height indicators, such as +89.8 m, +61.7 m, +35.0 m, +37.1 m, +36.2 m, +30.8 m, and +39.3 m, which likely represent ground levels or specific floor heights. The foreground shows a dark gray ground plane, and the background features a light blue sky.



| REV | DATE | DESCRIPTION |
|-----|----------|------------------|
| P01 | 21/08/20 | PLANNING |
| P02 | 05/11/20 | PLANNING REVISED |
| P03 | 11/12/20 | PLANNING REVISED |
| P04 | 25/03/22 | PLANNING REVISED |

| | |
|-----------------------|---|
| CLIENT: | PRECIS ADVISORY LTD / ACCESS SELF STORAGE |
| CONTRACTOR: | |
| PROJECT MANAGER: | CPC |
| STRUCTURAL ENGINEER: | AKTII |
| MECHANICAL ENGINEER: | ATELIER TEN |
| COST CONSULTANT: | ALINEA |
| FACADE CONSULTANT: | FMDC |
| FIRE CONSULTANT: | ARUP |
| LANDSCAPE CONSULTANT: | BHSLA |
| ACOUSTIC CONSULTANT: | SANDY BROWN |

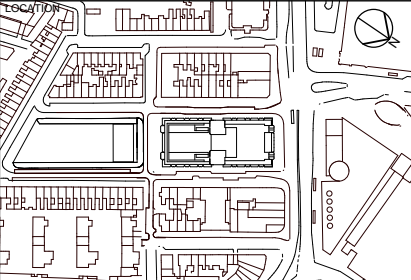
NOTE

When this drawing is issued in uncontrolled CAD format it will be accompanied by a PDF version and is issued to enable the recipient to prepare their own documents / drawings. It is not to be used for the production of drawings or documents. The recipient should report all drawing errors, omissions and discrepancies to the architect. All dimensions should be checked on site by the contractor and these dimensions shall be the contractor's responsibility.

Afford Hall Monaghams Parties Limited accepts no responsibility or liability for:-

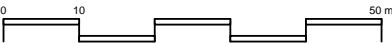
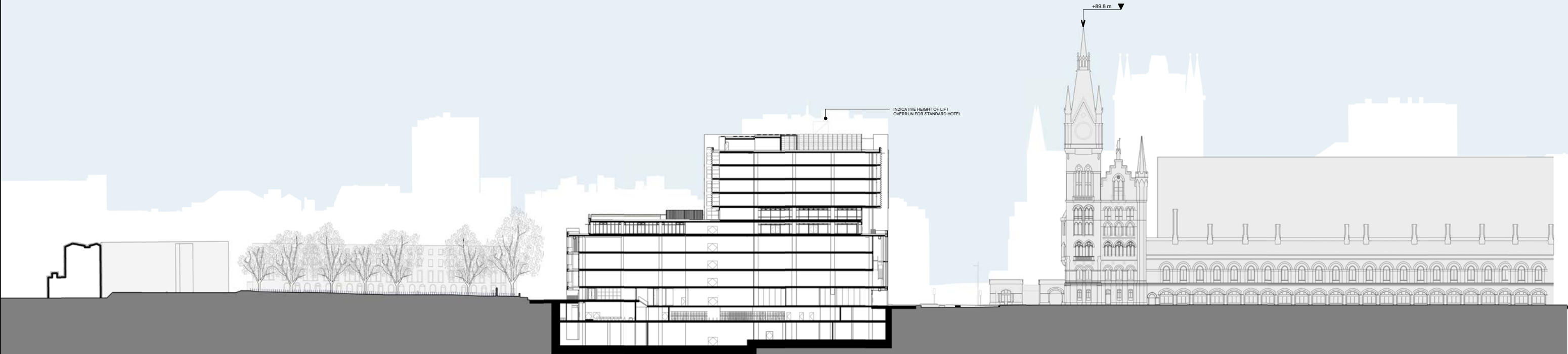
- any use of this drawing by parties other than the party for whom it was prepared or for purposes other than those for which it was prepared
- any alterations or additions to or discrepancies arising out of changes to the background information on which the drawings are based that was current at the time the drawings were prepared
- any loss or degradation of the information held in this drawing resulting from the translation from the original file format to any other file format or from the recipients reading of it in any other programme or any version of the programme other than that for which it was prepared
- the accuracy of survey information provided by others or for any costs, claims, proceedings and expenses arising out of reliance on such information

Any scaling or modification of the drawing is the responsibility of the authority solely for the purposes of the planning application to which it relates



| | | | | | | |
|--|---------|-------------|----------------|-------------|----------|--|
| ALFORD HALL MONAGHAN MORRIS | | | | | | |
| ARCHITECTS Ltd | | | | | | |
| MORELANDS 5-23 OLD STREET LONDON EC1V 9HL | | | | | | |
| TEL 020 7251 5261 FAX 020 7251 5123 WEB WWW.AHMM.CO.UK | | | | | | |
| job title | | | | | | |
| BELGROVE HOUSE | | | | | | |
| drawing title / location | | | | | | |
| SHORT SECTION N.2 - PROPOSED | | | | | | |
| drawn by | checked | scale | | | status | |
| by AHMM | HN | 1 : 200 @A1 | | | PLANNING | |
| project | zone | source | classification | drawing no. | revision | |
| 17002 | P | A | (00)_P302 | P04 | | |

APPROVED



| REV | DATE | DESCRIPTION |
|-----|----------|------------------|
| P01 | 21/08/20 | PLANNING |
| P02 | 05/11/20 | PLANNING REVISED |
| P03 | 11/12/20 | PLANNING REVISED |

| | |
|-----------------------|---|
| CLIENT: | PRECIS ADVISORY LTD / ACCESS SELF STORAGE |
| CONTRACTOR: | |
| PROJECT MANAGER: | CPC |
| STRUCTURAL ENGINEER: | AKTII |
| MECHANICAL ENGINEER: | ATELIER TEN |
| COST CONSULTANT: | ALINEA |
| FACADE CONSULTANT: | FMDC |
| FIRE CONSULTANT: | BUREAU VERITAS |
| LANDSCAPE CONSULTANT: | BHSLA |
| ACOUSTIC CONSULTANT: | SANDY BROWN |
| | |
| | |
| | |

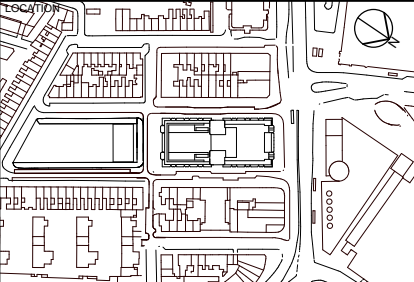
NOTE

When this drawing is issued in uncontrolled CAD format it will be accompanied by a PDF version and is issued to enable the recipient to prepare their own documents / models / drawings for which they are solely responsible.

The recipient should report all drawing errors, omissions and discrepancies to the architect. All dimensions should be checked on site by the contractor and such dimensions shall be the contractor's responsibility.

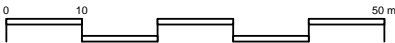
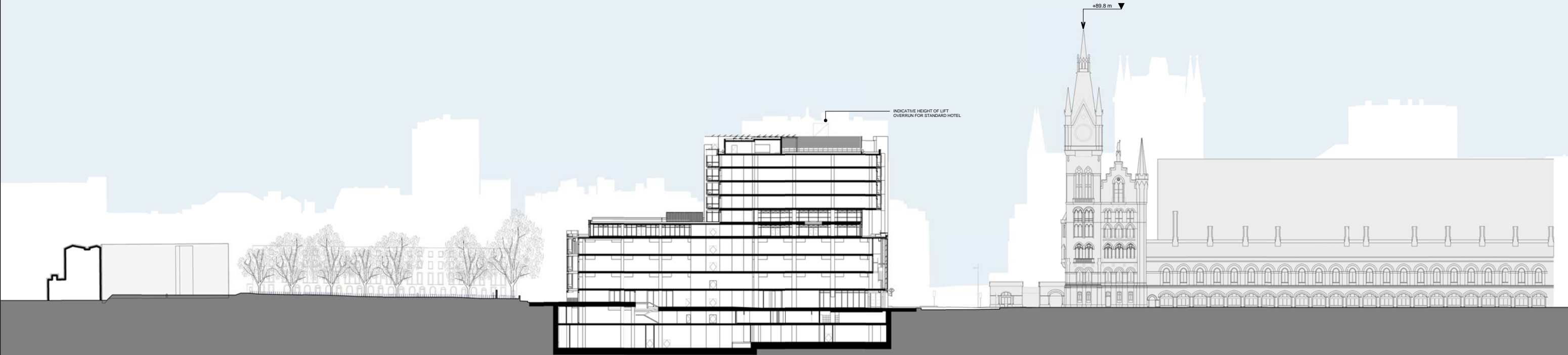
Allford Hall Monaghan Morris Limited accepts no responsibility or liability for:-

- any use of this drawing by parties other than the party for whom it was prepared or for purposes other than those for which it was prepared
- any alterations or additions to or discrepancies arising out of changes to the background information on which the drawings are based that was current at the time of issue, and which occur to that information after it has been issued by AHMM
- any loss or degradation of the information held in this drawing resulting from the translation from the original file format to any other file format or from the recipient's reading of it in any other programme or any version of the programme other than that which was used to prepare it
- the accuracy of survey information provided by others or for any costs, claims, proceedings and expenses arising out of reliance on such information
- any scaling from this drawing other than by the local planning authority solely for the purposes of the planning application to which it relates



| | | | | | |
|---|----------------------|----------------------------|------------------------------------|---------------------------|----------|
| ALLFORD HALL MONAGHAN MORRIS ARCHITECTS Ltd MORELANDS, 5-23 OLD STREET LONDON EC1V 9HL TEL 020 7251 5261 FAX 020 7251 5123 WEB WWW.AHMM.CO.UK | | | | | |
| job title 17002 BELGROVE HOUSE | | | | | |
| drawing title / location CONTEXT LONG SECTION - PROPOSED | | | | | |
| drawn by AHMM | checked HN | scale 1 : 500@A1 | status PLANNING | | |
| project 17002 | zone P | source A | classification (00)_P303 | drawing no. P03 | revision |

PROPOSED



REV DATE DESCRIPTION

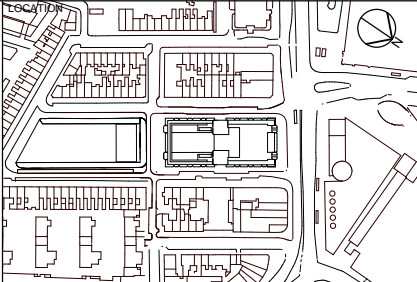
| | | |
|-----|----------|------------------|
| P01 | 21/08/20 | PLANNING |
| P02 | 05/11/20 | PLANNING REVISED |
| P03 | 11/12/20 | PLANNING REVISED |
| P04 | 25/03/22 | PLANNING REVISED |

| | |
|-----------------------|---|
| CLIENT: | PRECIS ADVISORY LTD / ACCESS SELF STORAGE |
| CONTRACTOR: | |
| PROJECT MANAGER: | CPC |
| STRUCTURAL ENGINEER: | AKTII |
| MECHANICAL ENGINEER: | ATELIER TEN |
| COST CONSULTANT: | ALINEA |
| FACADE CONSULTANT: | FMDC |
| FIRE CONSULTANT: | ARUP |
| LANDSCAPE CONSULTANT: | BHSLA |
| ACOUSTIC CONSULTANT: | SANDY BROWN |
| | |
| | |
| | |

NOTE

When this drawing is issued in uncontrolled CAD format it will be accompanied by a PDF version and is issued to enable the recipient to prepare their own documents / models / drawings for which they are solely responsible.
The recipient should report all drawing errors, omissions and discrepancies to the architect. All dimensions should be checked on site by the contractor and such dimensions shall be the contractor's responsibility.

Allford Hall Monaghan Morris Limited accepts no responsibility or liability for:-
- any use of this drawing by parties other than the party for whom it was prepared or for purposes other than those for which it was prepared
- any alterations or additions to or discrepancies arising out of changes to the background information on which the drawings are based that was current at the time of issue, and which occur to that information after it has been issued by AHMM
- any loss or degradation of the information held in this drawing resulting from the translation from the original file format to any other file format or from the recipient's reading of it in any other programme or any version of the programme other than that which was used to prepare it
- the accuracy of survey information provided by others or for any costs, claims, proceedings and expenses arising out of reliance on such information
- any scaling from this drawing other than by the local planning authority solely for the purposes of the planning application to which it relates



ALLFORD HALL MONAGHAN MORRIS

| | | | | |
|--|---------------|---------------------|-----------------------------|-----------------|
| ARCHITECTS Ltd MORELANDS, 5-23 OLD STREET LONDON EC1V 9HL TEL 020 7251 5261 FAX 020 7251 5123 WEB WWW.AHMM.CO.UK | | | | |
| job title BELGROVE HOUSE | | | | |
| drawing title / location CONTEXT LONG SECTION - PROPOSED | | | | |
| drawn by AHMM | checked HN | scale 1 : 500@A1 | status PLANNING | |
| project 17002 | zone P | source A | classification (00)_P303 | revision P04 |

This architectural elevation drawing illustrates a proposed building complex within an urban context. The foreground features a dark grey ground plane. The central focus is a modern building with a glass facade, shown in section to reveal its internal structure, including floors and a basement. To its left is a taller, more ornate building with a clock tower. To the right is a large, white, modern building with a flat roof. The background shows a city skyline with various buildings, including a prominent church with a tall spire. Height markers are indicated by arrows and text throughout the drawing:

- +89.8 m: Points to the top of the clock tower.
- +61.7 m: Points to the top of the building on the left.
- +58.3 m: Points to the top of the modern building's roof.
- +61.7 m: Points to the top of the modern building's roof.
- +35.0 m: Points to the top of a building in the background.
- +37.1 m: Points to the top of a building in the background.
- +30.8 m: Points to the top of a building in the background.
- +38.3 m: Points to the top of a building in the background.

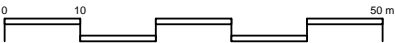
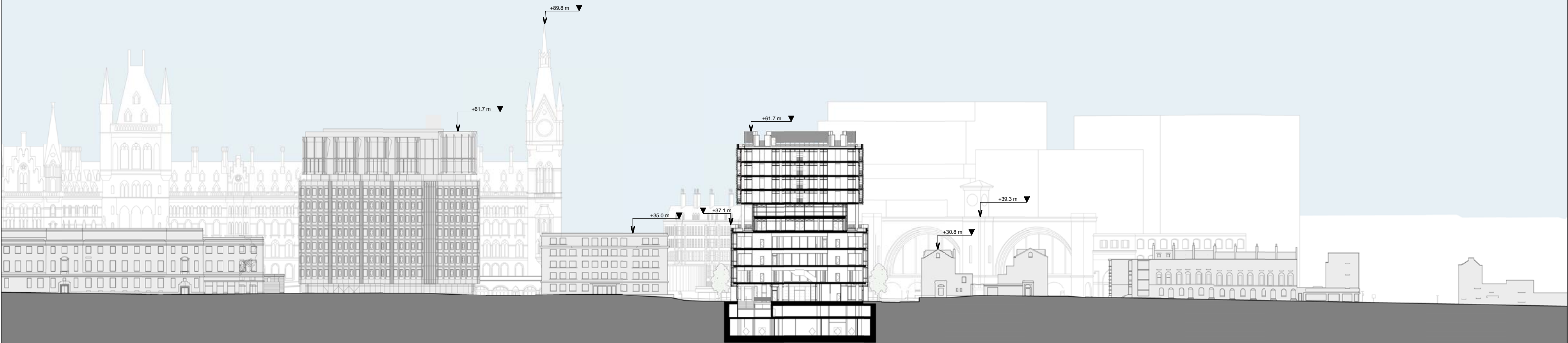
In the top left corner, a pink rounded rectangle contains the word "APPROVED" in bold, black, uppercase letters.



| | |
|-----------------------|---|
| CLIENT: | PRECIS ADVISORY LTD / ACCESS SELF STORAGE |
| CONTRACTOR: | |
| PROJECT MANAGER: | CPC |
| STRUCTURAL ENGINEER: | AKTII |
| MECHANICAL ENGINEER: | ATELIER TEN |
| COST CONSULTANT: | ALINEA |
| FAÇADE CONSULTANT: | FMDG |
| FIRE CONSULTANT: | BUREAU VERITAS |
| LANDSCAPE CONSULTANT: | BHSLA |
| ACOUSTIC CONSULTANT: | SANDY BROWN |
| | |
| | |

| | | | | | | |
|---|--|----------------------|----------------------------|------------------------------|----------------------------|--------------|
| ALLFORD HALL MONAGHAN MORRIS AROTHICTCS Ltd MORELANDS, 5-23 OLD STREET LONDON EC1V 9HL TEL 020 7251 5261 FAX 020 7251 5123 WEB WWW.AHMM.CO.UK | | | | | | |
| job title 17002 BELGROVE HOUSE | | | | | | |
| drawing title / location CONTEXT SHORT SECTION N.2 - PROPOSED | | | | | | |
| drawn by AHMM | | checked HN | | | scale 1 : 500@A1 | |
| | | | | | status PLANNING | |
| project 17002 | | zone P | source (00)_P304 | classification P03 | drawing no. | revision |

PROPOSED



REV DATE DESCRIPTION

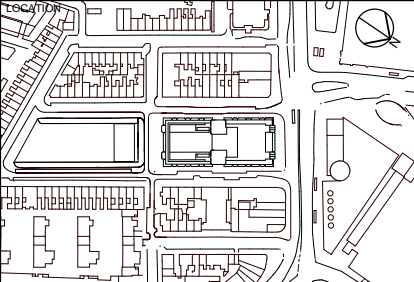
P01 21/08/20 PLANNING
P02 05/11/20 PLANNING REVISED
P03 11/12/20 PLANNING REVISED
P04 25/03/22 PLANNING REVISED

| | |
|-----------------------|---|
| CLIENT: | PRECIS ADVISORY LTD / ACCESS SELF STORAGE |
| CONTRACTOR: | |
| PROJECT MANAGER: | CPC |
| STRUCTURAL ENGINEER: | AKTII |
| MECHANICAL ENGINEER: | ATELIER TEN |
| COST CONSULTANT: | ALINEA |
| FACADE CONSULTANT: | FMDC |
| FIRE CONSULTANT: | ARUP |
| LANDSCAPE CONSULTANT: | BHSLA |
| ACOUSTIC CONSULTANT: | SANDY BROWN |
| | |
| | |

NOTE

When this drawing is issued in uncontrolled CAD format it will be accompanied by a PDF version and is issued to enable the recipient to prepare their own documents / models / drawings for which they are solely responsible.
The recipient should report all drawing errors, omissions and discrepancies to the architect. All dimensions should be checked on site by the contractor and such dimensions shall be the contractor's responsibility.

Allford Hall Monaghan Morris Limited accepts no responsibility or liability for:-
- any use of this drawing by parties other than the party for whom it was prepared or for purposes other than those for which it was prepared
- any alterations or additions to or discrepancies arising out of changes to the background information on which the drawings are based that was current at the time of issue, and which occur to that information after it has been issued by AHMM
- any loss or degradation of the information held in this drawing resulting from the translation from the original file format to any other file format or from the recipient's reading of it in any other programme or any version of the programme other than that which was used to prepare it
- the accuracy of survey information provided by others or for any costs, claims, proceedings and expenses arising out of reliance on such information
- any scaling from this drawing other than by the local planning authority solely for the purposes of the planning application to which it relates



ALLFORD HALL MONAGHAN MORRIS

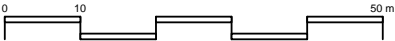
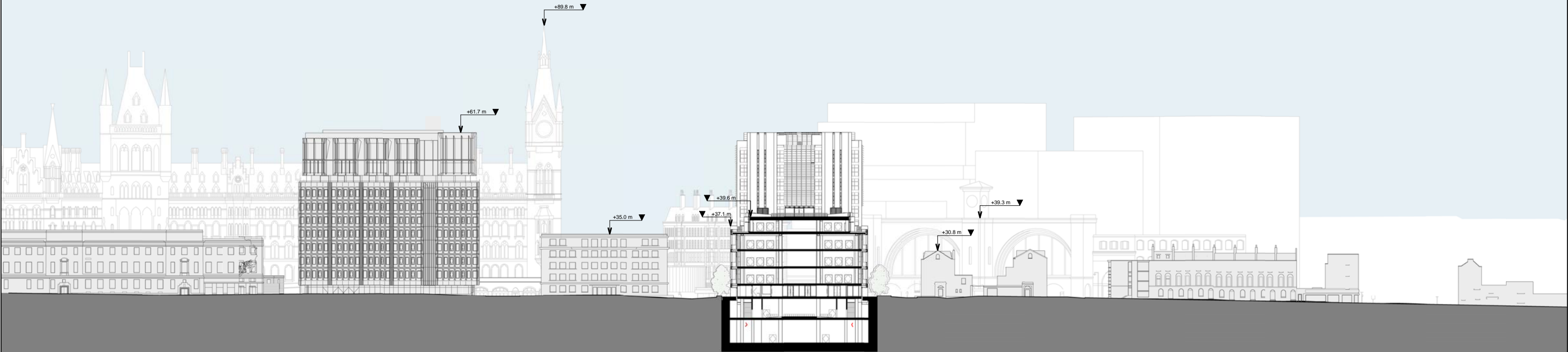
ARCHITECTS Ltd
MORELANDS, 5-23 OLD STREET LONDON EC1V 9HL
TEL 020 7251 5261 FAX 020 7251 5123 WEB WWW.AHMM.CO.UK

job title
BELGROVE HOUSE

drawing title / location
CONTEXT SHORT SECTION N.2 -
PROPOSED

| | | | |
|----------|---------|-------------|----------------|
| drawn by | checked | scale | status |
| AHMM | HN | 1 : 500 @A1 | PLANNING |
| project | zone | source | classification |
| 17002 | P | A | (00)_P304 P04 |

APPROVED



REV DATE DESCRIPTION

P01 21/08/20 PLANNING
P02 05/11/20 PLANNING REVISED
P03 11/12/20 PLANNING REVISED

| | |
|-----------------------|---|
| CLIENT: | PRECIS ADVISORY LTD / ACCESS SELF STORAGE |
| CONTRACTOR: | |
| PROJECT MANAGER: | CPC |
| STRUCTURAL ENGINEER: | AKTII |
| MECHANICAL ENGINEER: | ATELIER TEN |
| COST CONSULTANT: | ALINEA |
| FACADE CONSULTANT: | FMDC |
| FIRE CONSULTANT: | BUREAU VERITAS |
| LANDSCAPE CONSULTANT: | BHSLA |
| ACOUSTIC CONSULTANT: | SANDY BROWN |
| | |
| | |
| | |

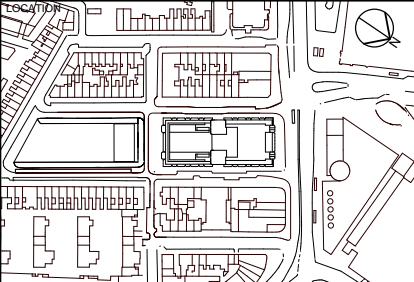
NOTE

When this drawing is issued in uncontrolled CAD format it will be accompanied by a PDF version and is issued to enable the recipient to prepare their own documents / models / drawings for which they are solely responsible.

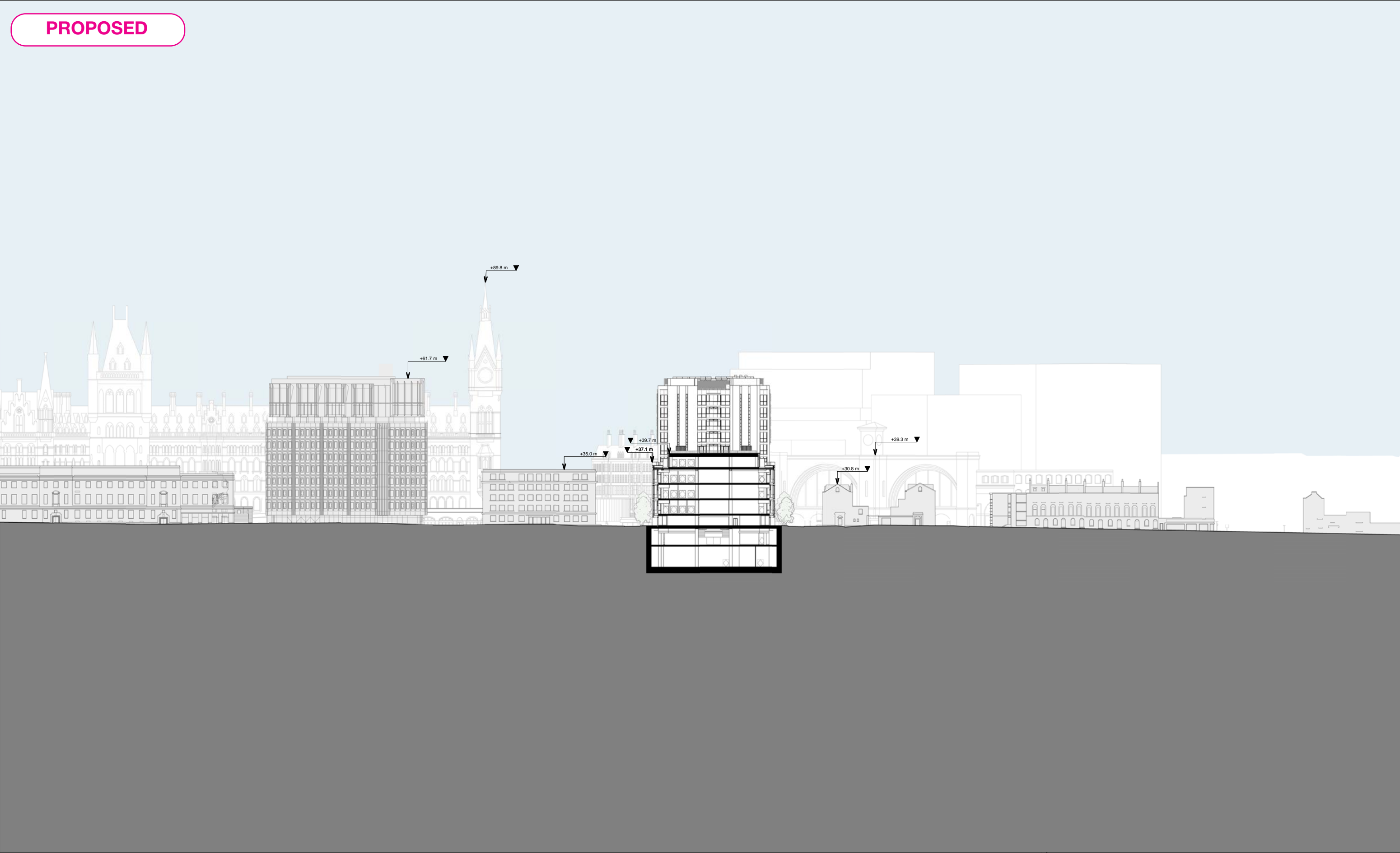
The recipient should report all drawing errors, omissions and discrepancies to the architect. All dimensions should be checked on site by the contractor and such dimensions shall be the contractor's responsibility.

Allford Hall Monaghan Morris Limited accepts no responsibility or liability for:-

- any use of this drawing by parties other than the party for whom it was prepared or for purposes other than those for which it was prepared
- any alterations or additions to or discrepancies arising out of changes to the background information on which the drawings are based that was current at the time of issue, and which occur to that information after it has been issued by AHMM
- any loss or degradation of the information held in this drawing resulting from the translation from the original file format to any other file format or from the recipient's reading of it in any other programme or any version of the programme other than that which was used to prepare it
- the accuracy of survey information provided by others or for any costs, claims, proceedings and expenses arising out of reliance on such information
- any scaling from this drawing other than by the local planning authority solely for the purposes of the planning application to which it relates



| | | | | | |
|---|---------|-------------|----------------|-------------|----------|
| ALLFORD HALL MONAGHAN MORRIS | | | | | |
| ARCHITECTS Ltd MORELANDS 5-23 OLD STREET LONDON EC1V 9HL TEL 020 7251 5261 FAX 020 7251 5123 WEB WWW.AHMM.CO.UK | | | | | |
| Job title | | | | | |
| 17002 BELGROVE HOUSE | | | | | |
| drawing title / location | | | | | |
| CONTEXT SHORT SECTION N.4 - PROPOSED | | | | | |
| drawn by | checked | scale | status | | |
| AHMM | HN | 1 : 500 @A1 | PLANNING | | |
| project | zone | source | classification | drawing no. | revision |
| 17002 | P | A | (00)_P305 | P03 | |



01050m

| REV | DATE | DESCRIPTION |
|-----|----------|------------------|
| P01 | 21/08/20 | PLANNING |
| P02 | 05/11/20 | PLANNING REVISED |
| P03 | 11/12/20 | PLANNING REVISED |
| P04 | 25/03/22 | PLANNING REVISED |

| | |
|-----------------------|---|
| CLIENT: | PRECIS ADVISORY LTD / ACCESS SELF STORAGE |
| CONTRACTOR: | |
| PROJECT MANAGER: | CPC |
| STRUCTURAL ENGINEER: | AKTII |
| MECHANICAL ENGINEER: | ATELIER TEN |
| COST CONSULTANT: | ALINEA |
| FACADE CONSULTANT: | FMDC |
| FIRE CONSULTANT: | ARUP |
| LANDSCAPE CONSULTANT: | BHSLA |
| ACOUSTIC CONSULTANT: | SANDY BROWN |
| | |
| | |

NOTE

When this drawing is issued in uncontrolled CAD format it will be accompanied by a PDF version and is issued to enable the recipient to prepare their own documents / models / drawings for which they are solely responsible.
The recipient should report all drawing errors, omissions and discrepancies to the architect. All dimensions should be checked on site by the contractor and such dimensions shall be the contractor's responsibility.

Allford Hall Monaghan Morris Limited accepts no responsibility or liability for:-
- any use of this drawing by parties other than the party for whom it was prepared or for purposes other than those for which it was prepared
- any alterations or additions to or discrepancies arising out of changes to the background information on which the drawings are based that was current at the time of issue, and which occur to that information after it has been issued by AHMM
- any loss or degradation of the information held in this drawing resulting from the translation from the original file format to any other file format or from the recipients reading of it in any other programme or any version of the programme other than that which was used to prepare it
- the accuracy of survey information provided by others or for any costs, claims, proceedings and expenses arising out of reliance on such information
- any scaling from this drawing other than by the local planning authority solely for the purposes of the planning application to which it relates

LOCATION

ALLFORD HALL MONAGHAN MORRIS

ARCHITECTS Ltd
MORELANDS, 5-23 OLD STREET LONDON EC1V 9HL
TEL 020 7251 5261 FAX 020 7251 5123 WEB WWW.AHMM.CO.UK

job title

BELGROVE HOUSE

drawing title / location

CONTEXT SHORT SECTION N.4 - PROPOSED

| | | | |
|----------|---------|-------------|----------------|
| drawn by | checked | scale | status |
| AHMM | HN | 1 : 500 @A1 | PLANNING |
| project | zone | source | classification |
| 17002 | P | A | (00)_P305 P04 |

© Allford Hall Monaghan Morris Limited



ALLFORD
HALL
MONAGHAN
MORRIS