

Fig. 2.6.1 South Elevation - MAT 05 location

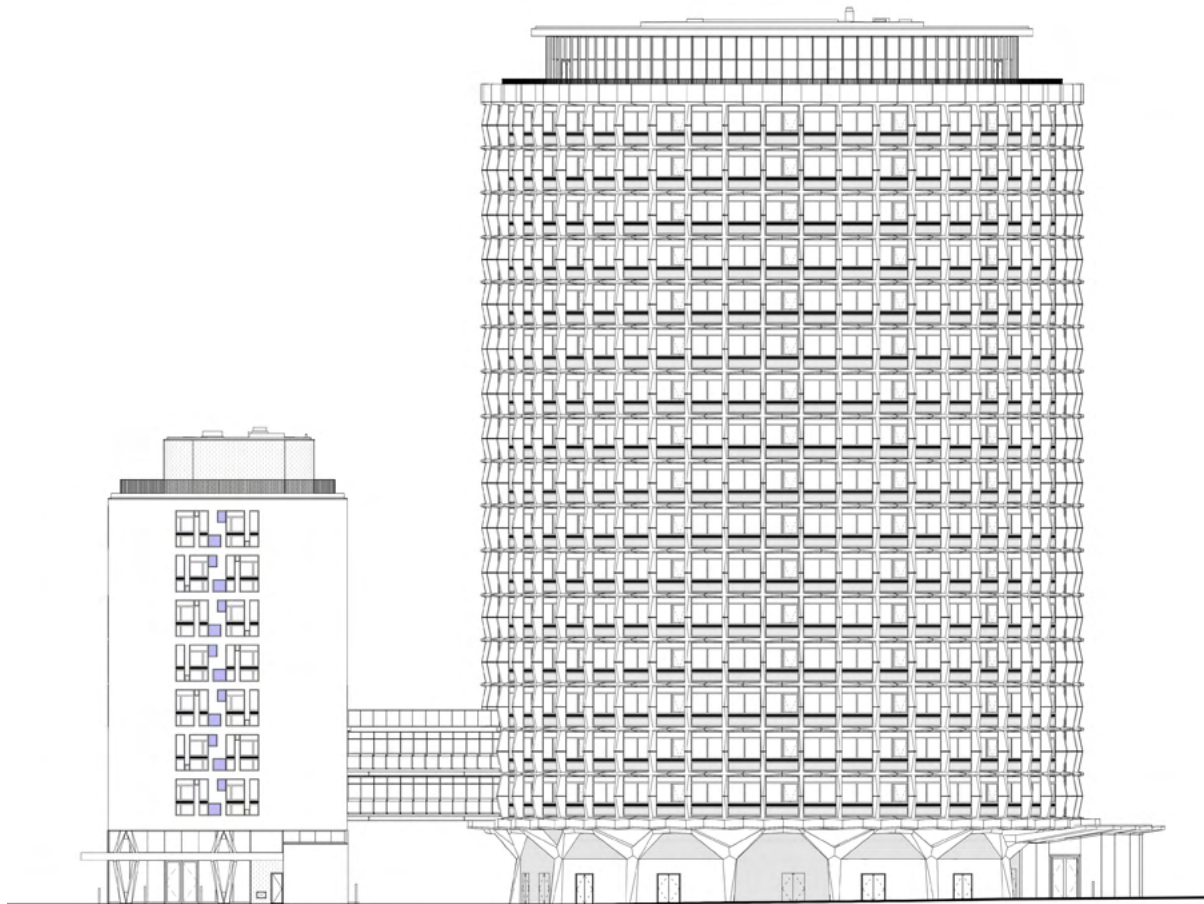


Fig. 2.6.2 North Elevation - MAT 05 location

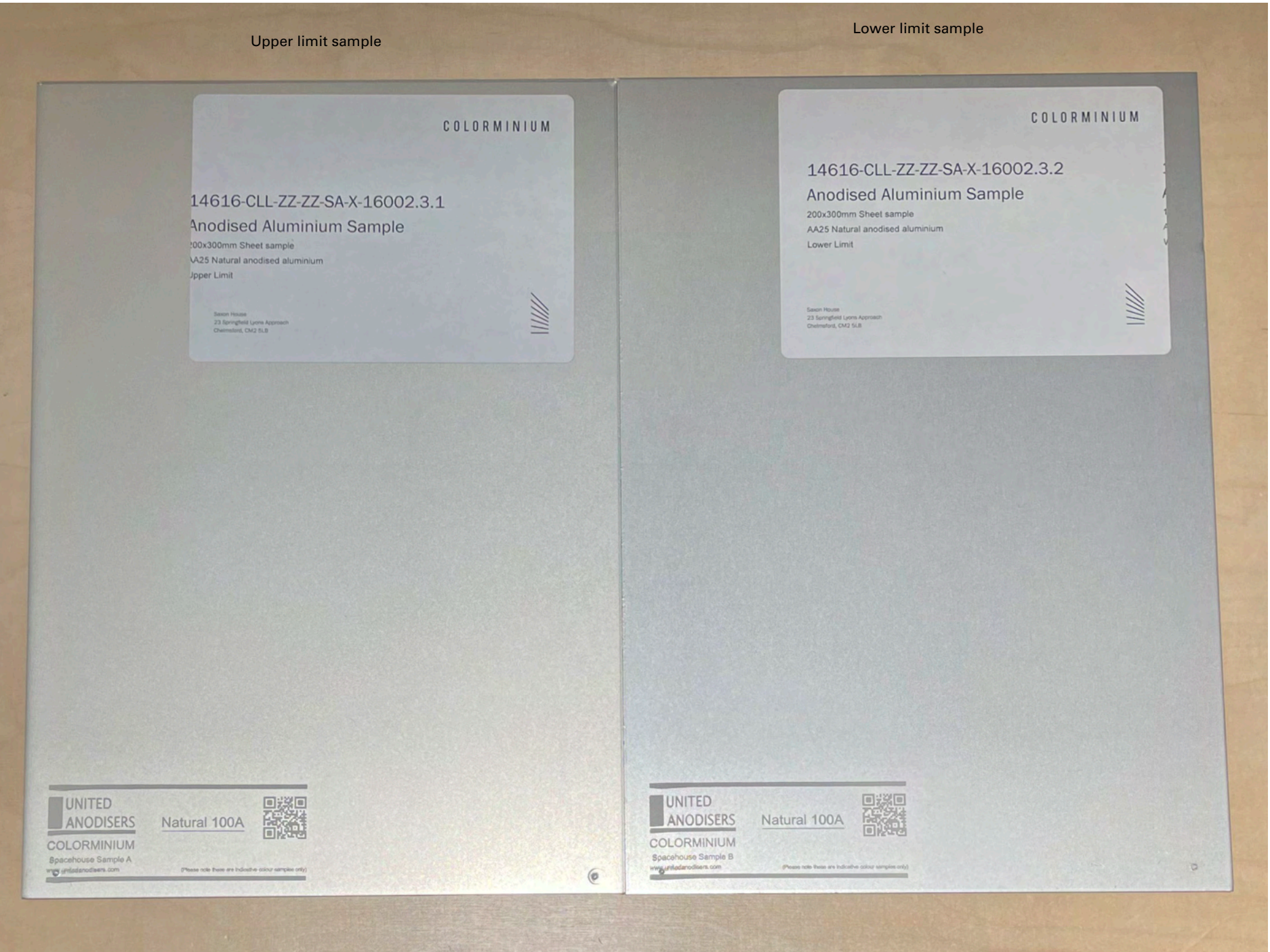


2.7 **MAT 06** - Silver anodised aluminium

Silver anodised aluminium applies to:

- all facade curtain walls frames and spandrels except Tower reception and filling station that have a brushed stainless steel finish
- all typical windows frame and spandrel
- all louvred panels except Kingsway substation and Tower UKPN west fire escape route
- Kingsway south stair enclosure frame

The photo highlights the upper and lower limits agreed range for the anodised finish. These are required as part of the material quality inspection process to ensure there's no clear visual difference between frames and spandrels finish.





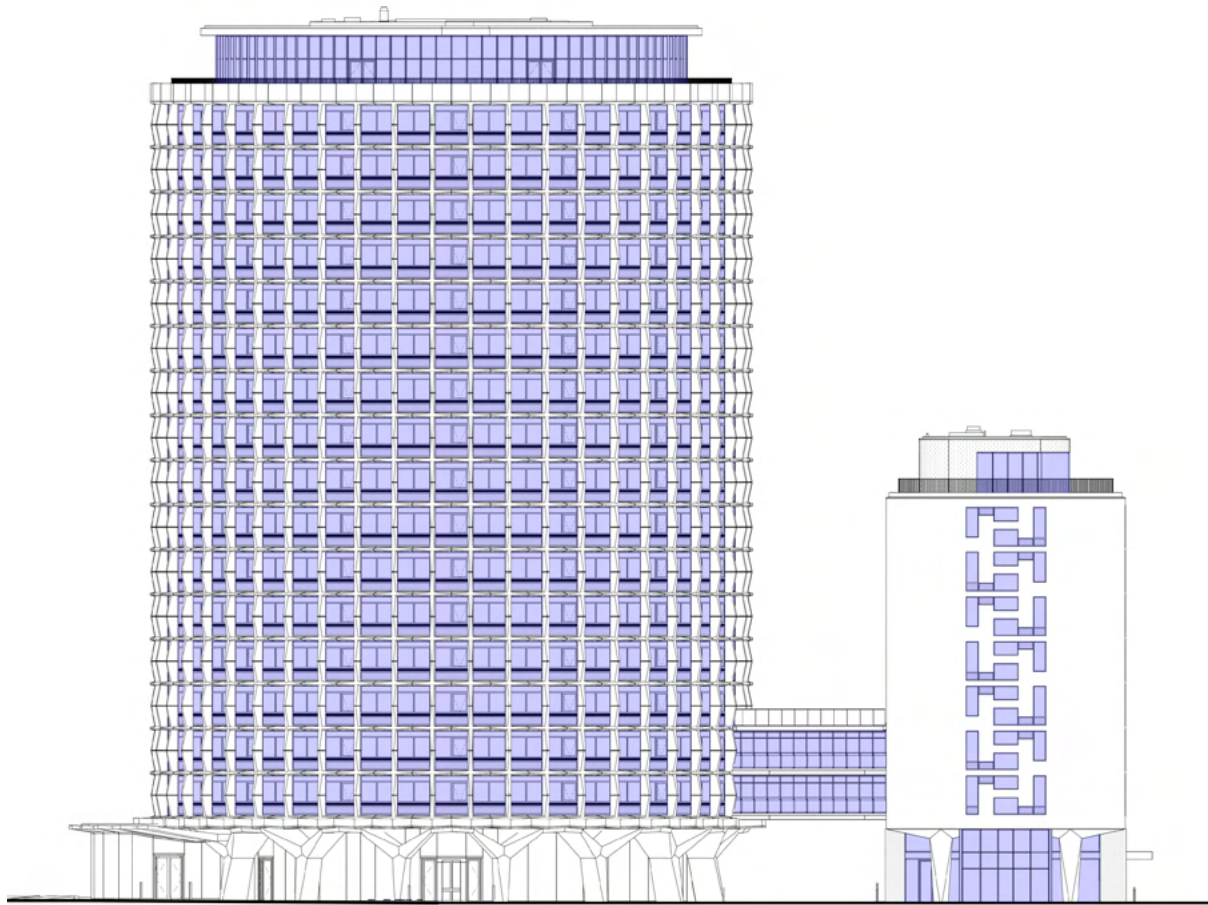


Fig. 2.7.1 South Elevation - MAT 06 location

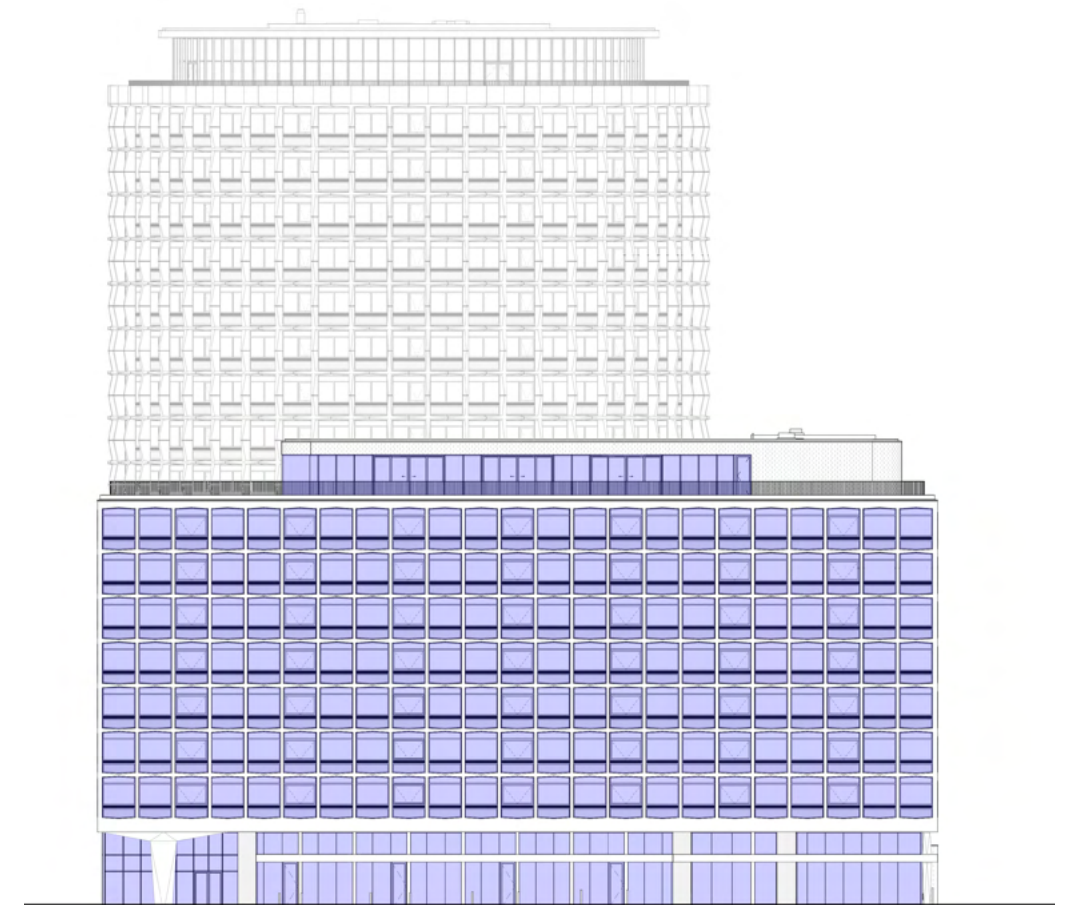


Fig. 2.7.3 Kingsway West Elevation - MAT 06 location

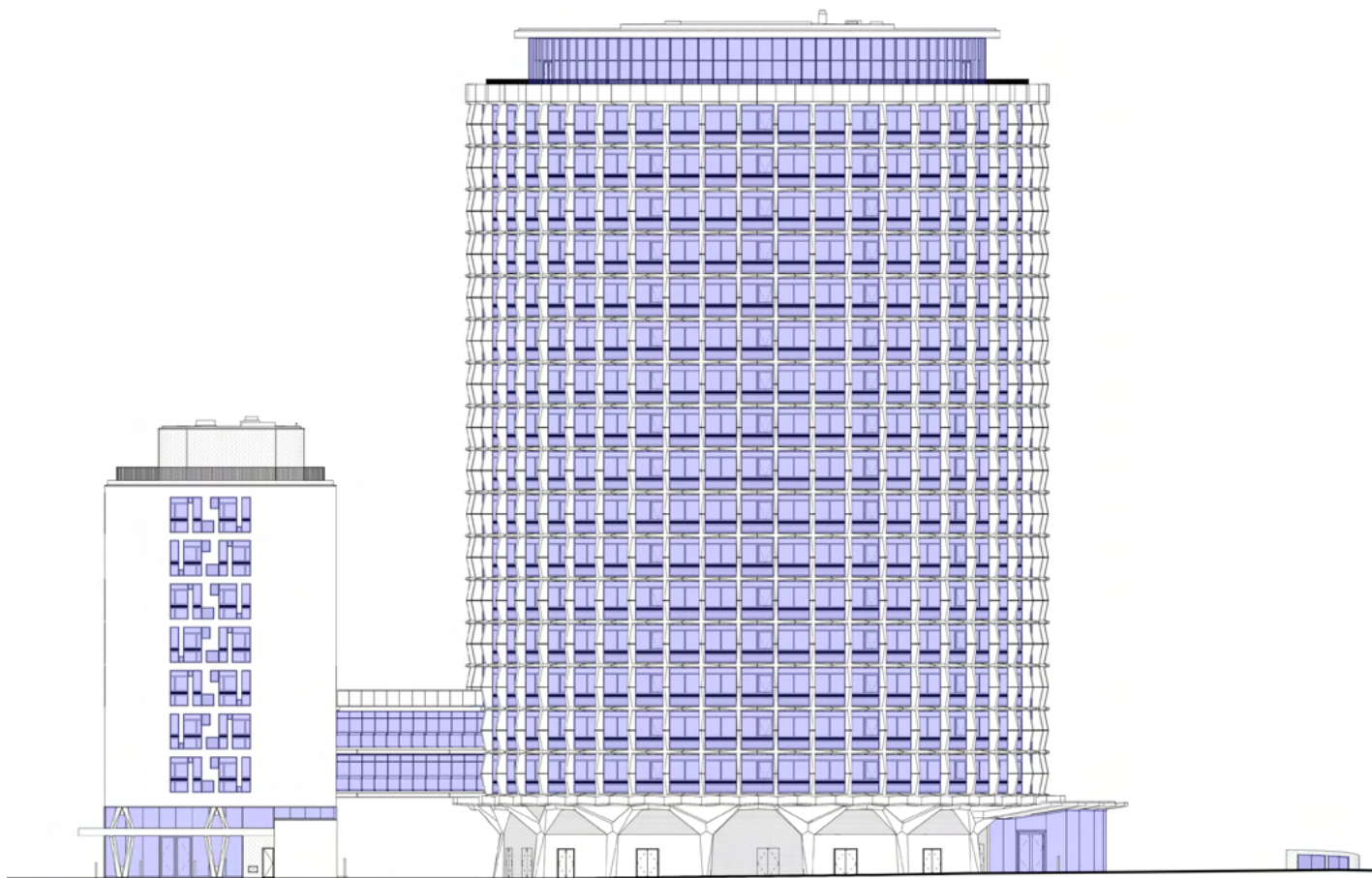


Fig. 2.7.2 North Elevation - MAT 06 location

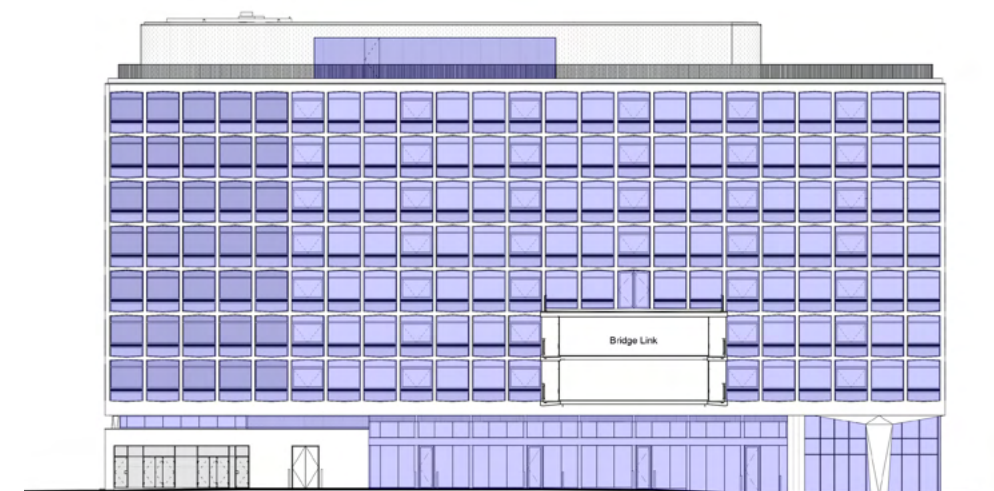


Fig. 2.7.4 Kingsway East Elevation - MAT 06 location



2.8 **MAT 07** - PPC RAL 7042 Matt

PPC RAL 7042 matt finish applies to:

- Kingsway ground floor metal doors (west facade loading bay and north facade basement fire escape route)
- Tower level 17 plantroom metal door
- Kingsway substation louvred facade system
- Tower UKPN west fire escape route louvred facade system.





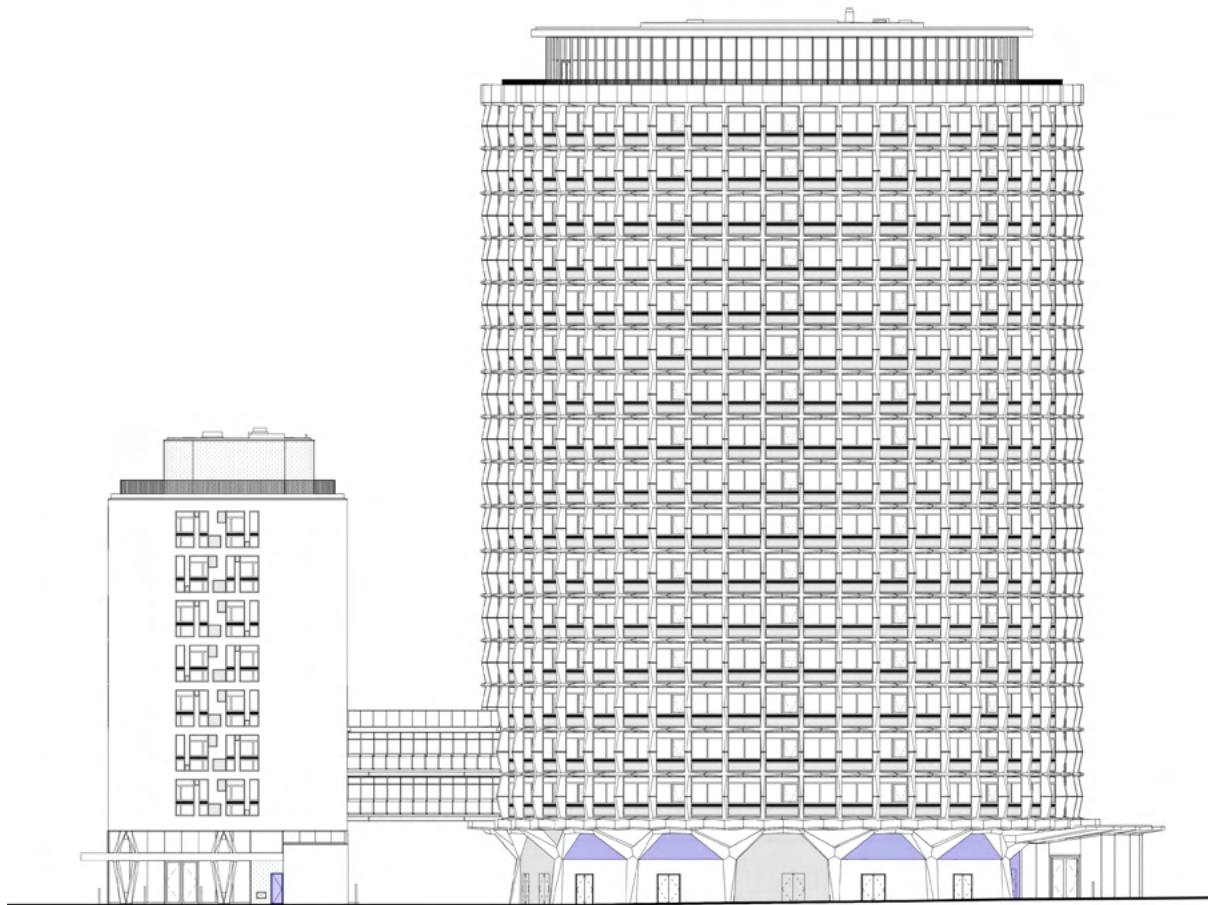


Fig. 2.8.1 North Elevation - MAT 07 location

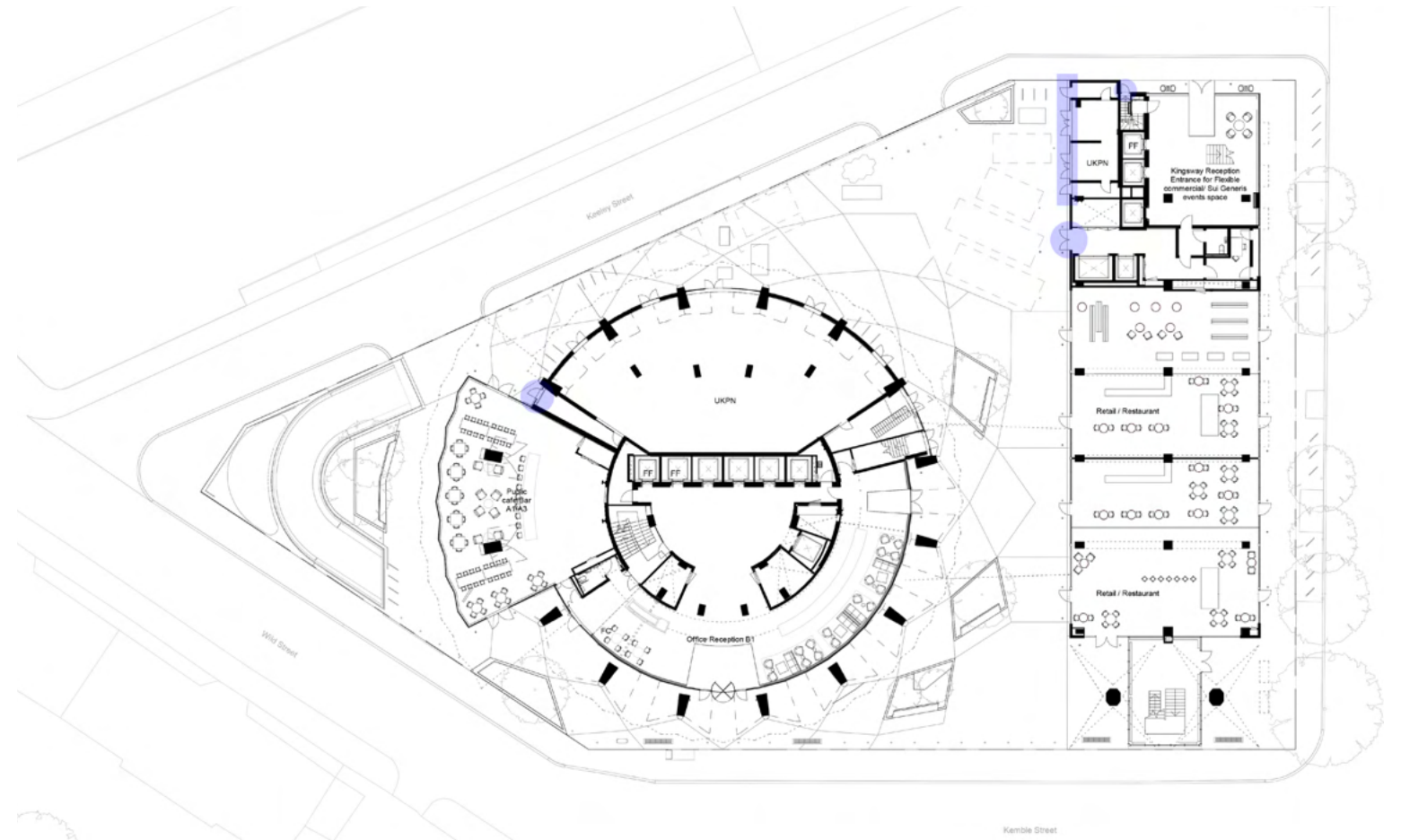


Fig. 2.8.3 Ground Floor Plan - MAT 07 location

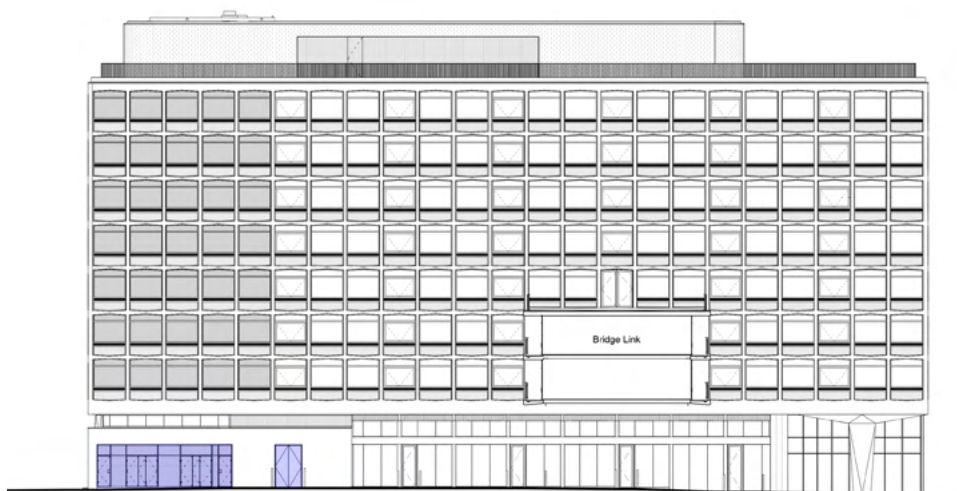


Fig. 2.8.2 Kingsway East Elevation - MAT 07 location

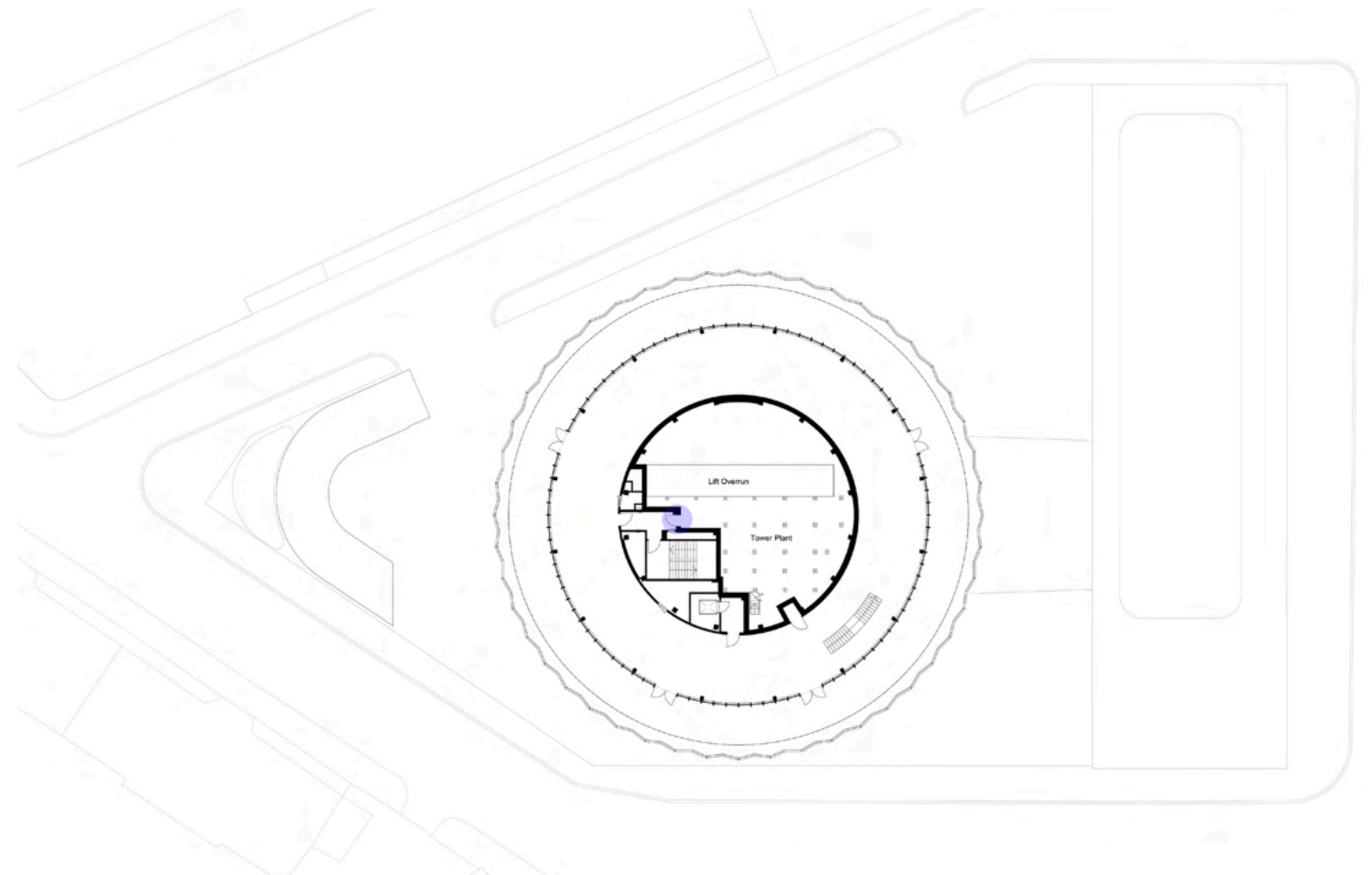


Fig. 2.8.4 Level 17 Plan - MAT 07 location

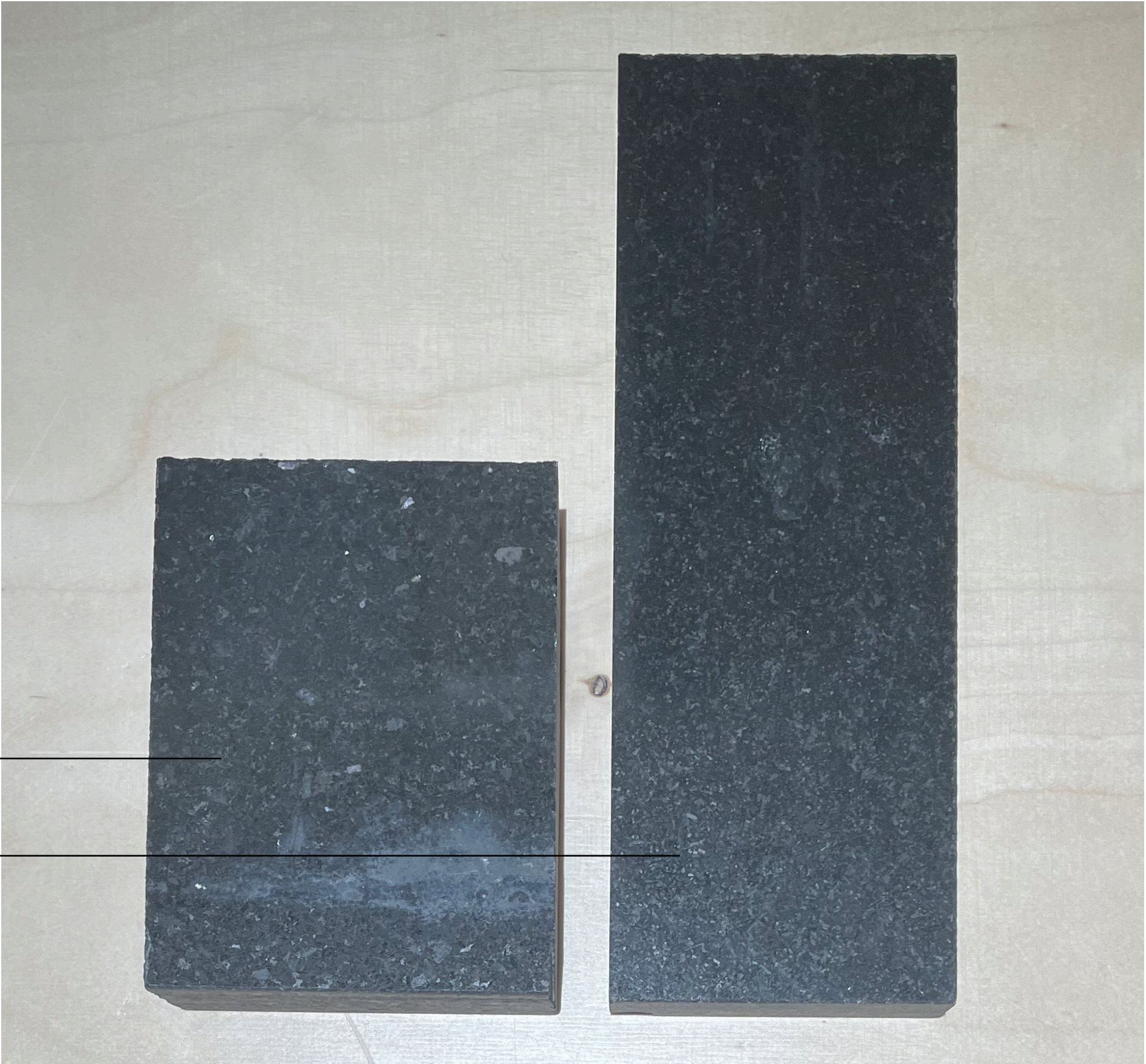


2.9 **MAT 08** - Black granite stone

Black granite stone proposed sample aims to match the existing stone finish for Kingsway reception canopy.

Existing granite sample

Proposed granite sample to match existing





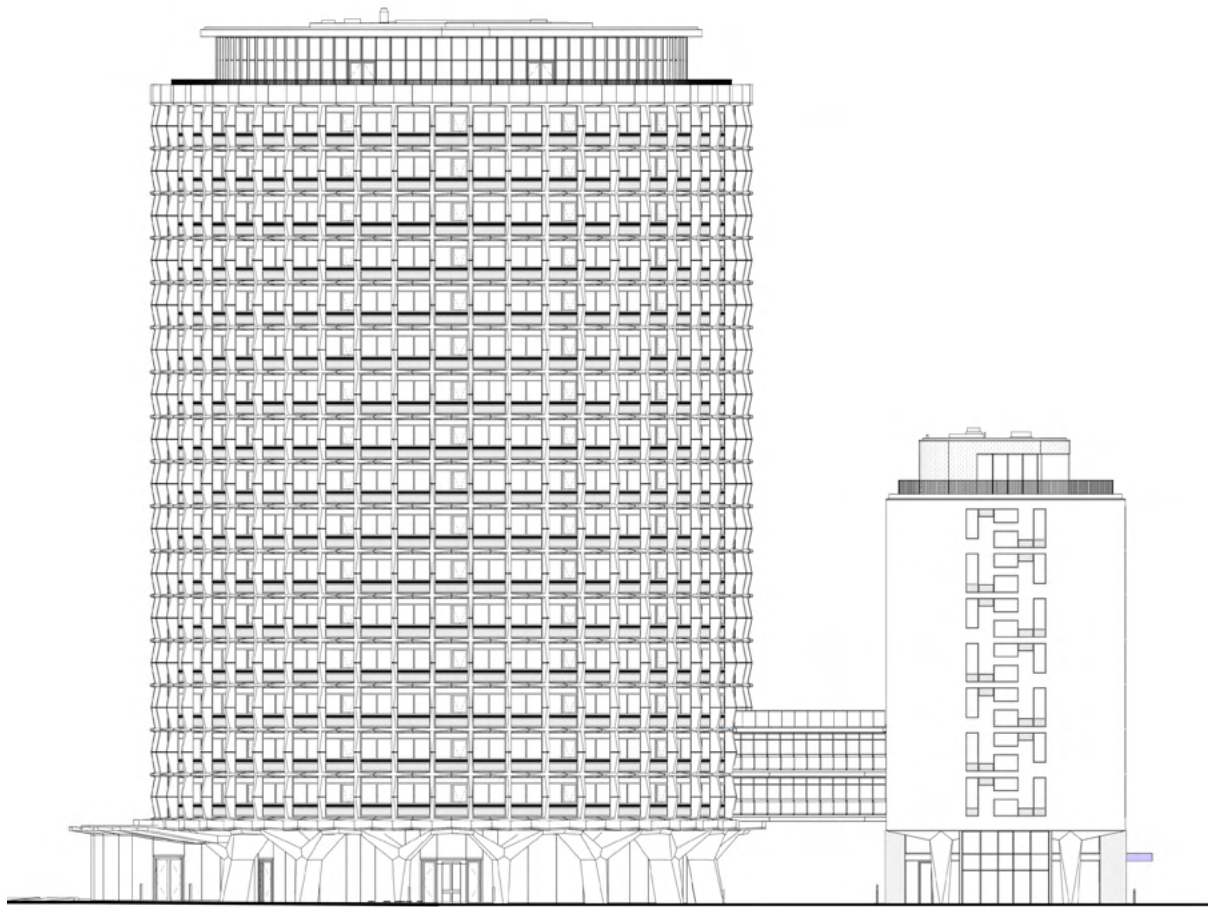


Fig. 2.9.1 South Elevation - MAT 08 location

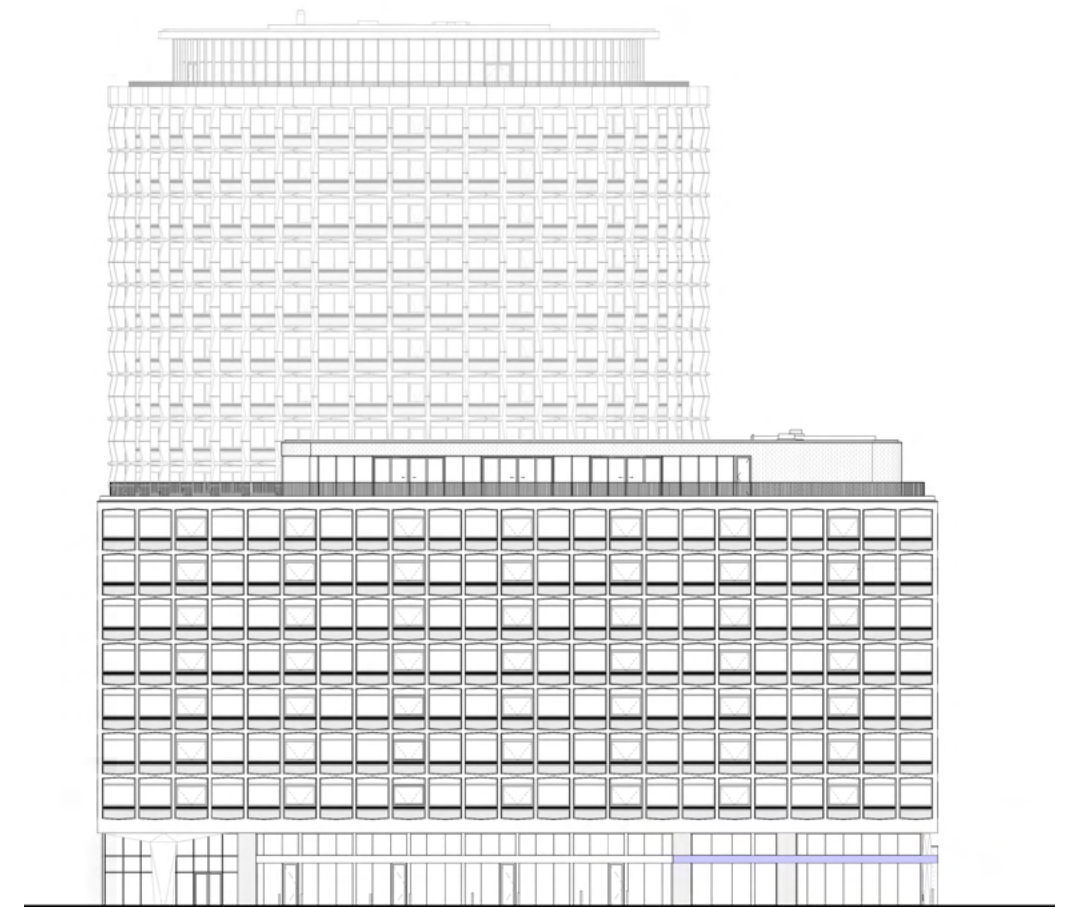


Fig. 2.9.3 Kingsway West Elevation - MAT 08 location

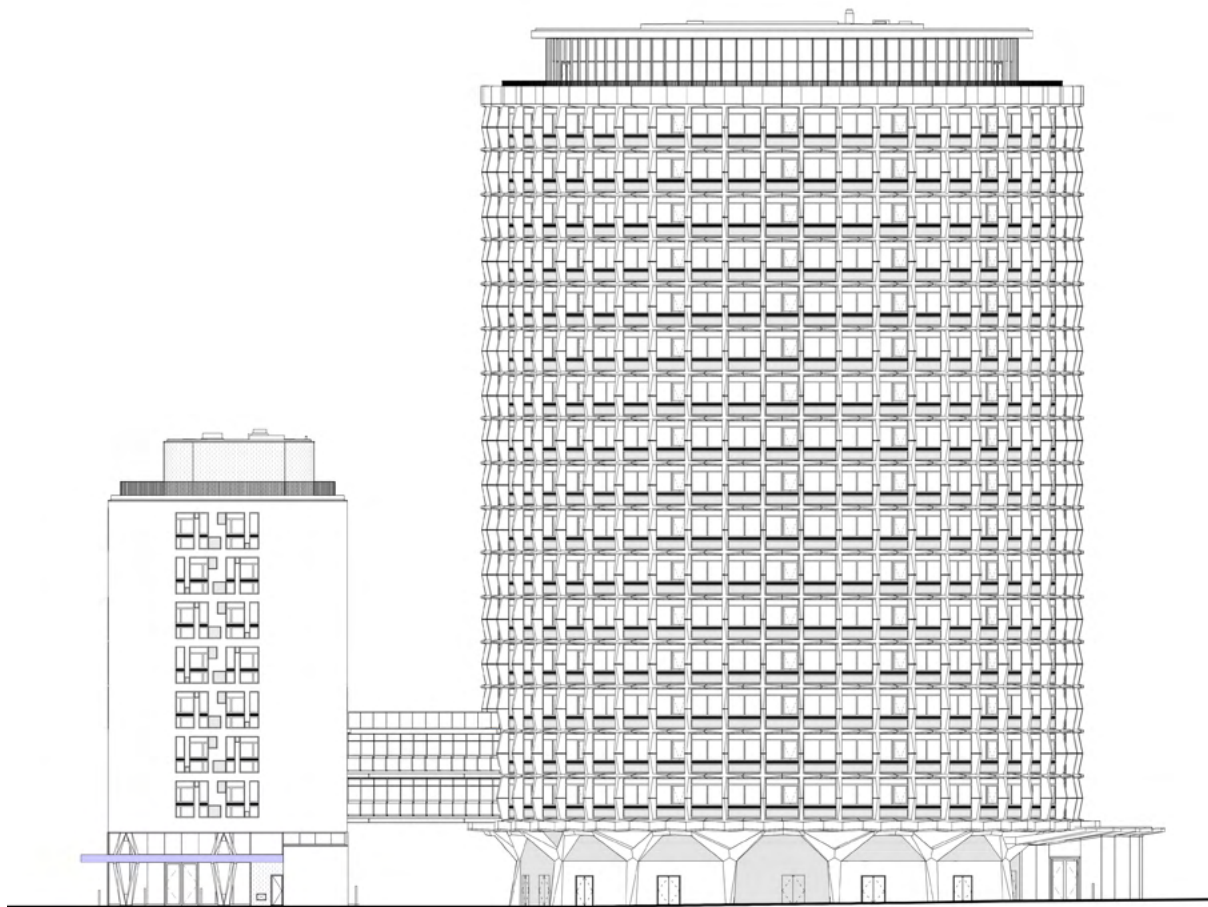


Fig. 2.9.2 North Elevation - MAT 08 location



2.10 **MAT 09** - Precast concrete sample

Precast concrete proposed sample aims to match the existing Tower cruciforms cement aggregate mix and finish: 10mm aggregate size with gritblast finish.





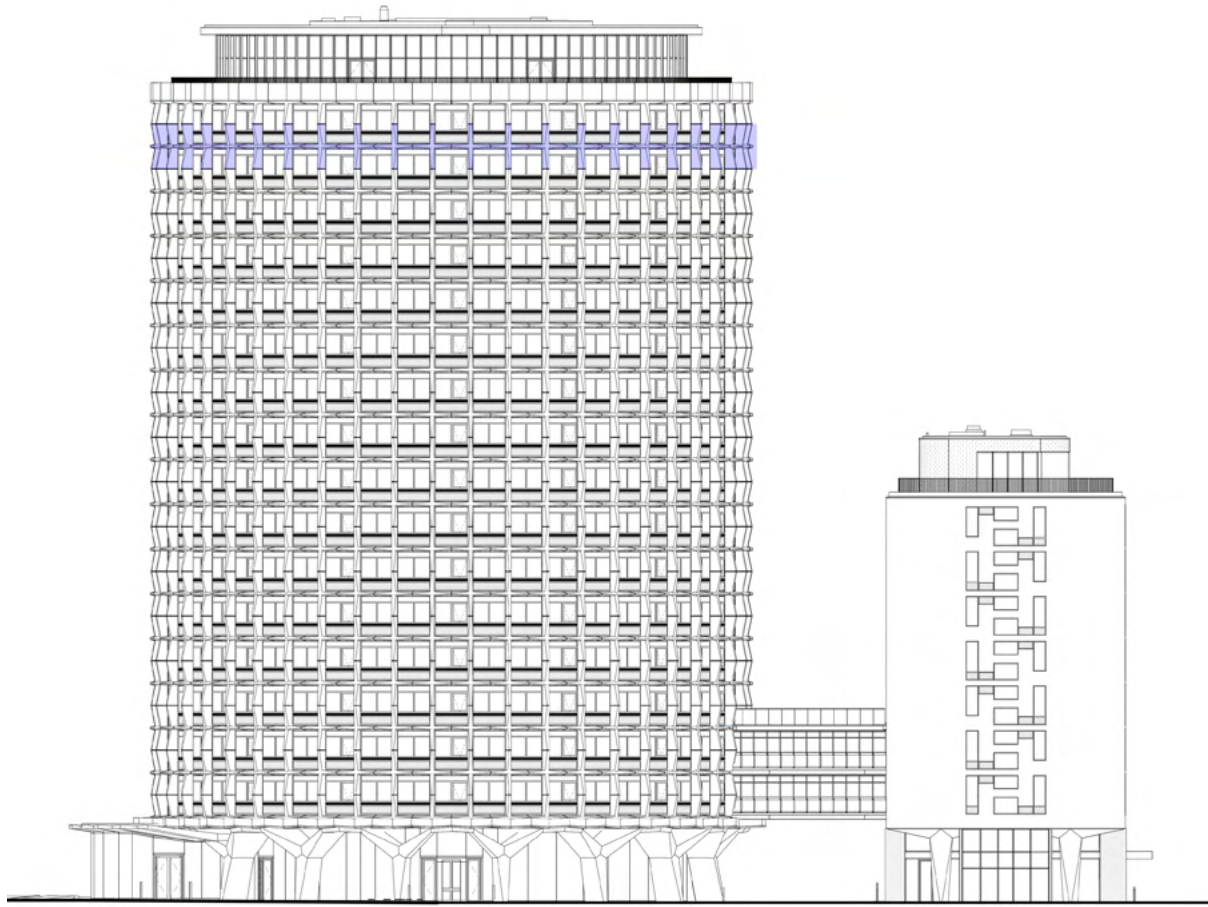


Fig. 2.10.1 South Elevation - MAT 09 location

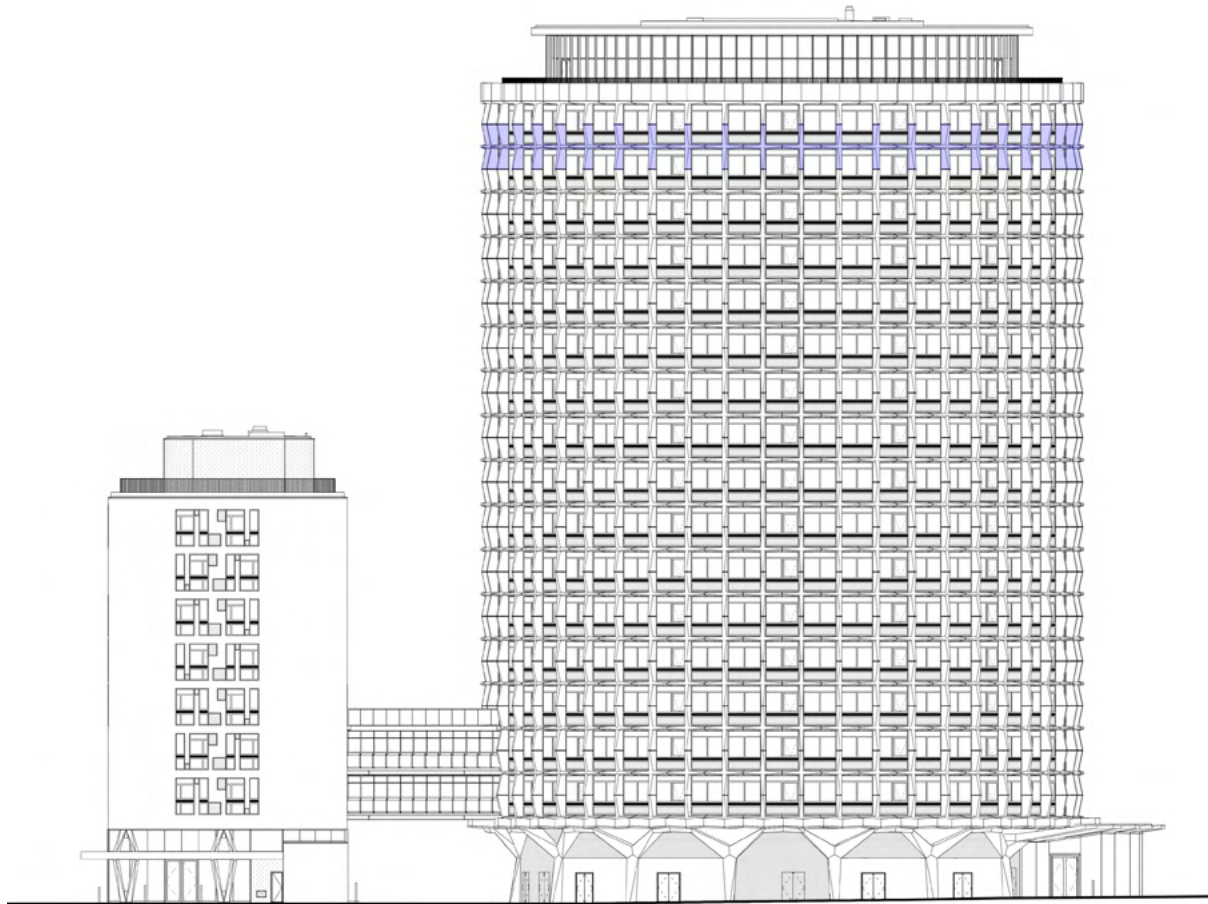


Fig. 2.10.2 North Elevation - MAT 09 location



2.11 **MAT 10** - RAL 7042 Matt paint

RAL 7042 Matt paint finish to be applied to Tower UKPN substation existing louvred facade bays and metal doors. Existing finishes to be made good.





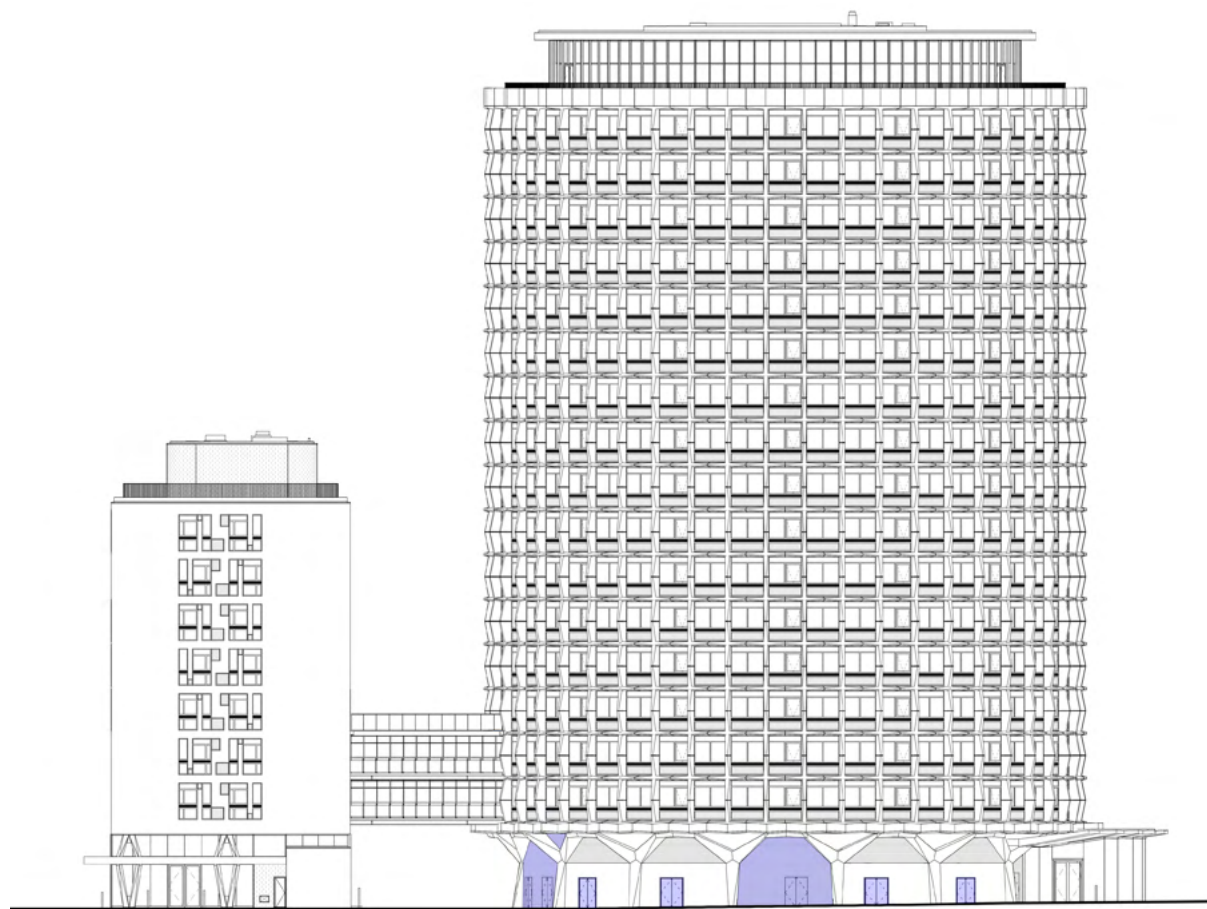


Fig. 2.11.1 North Elevation - MAT 10 location

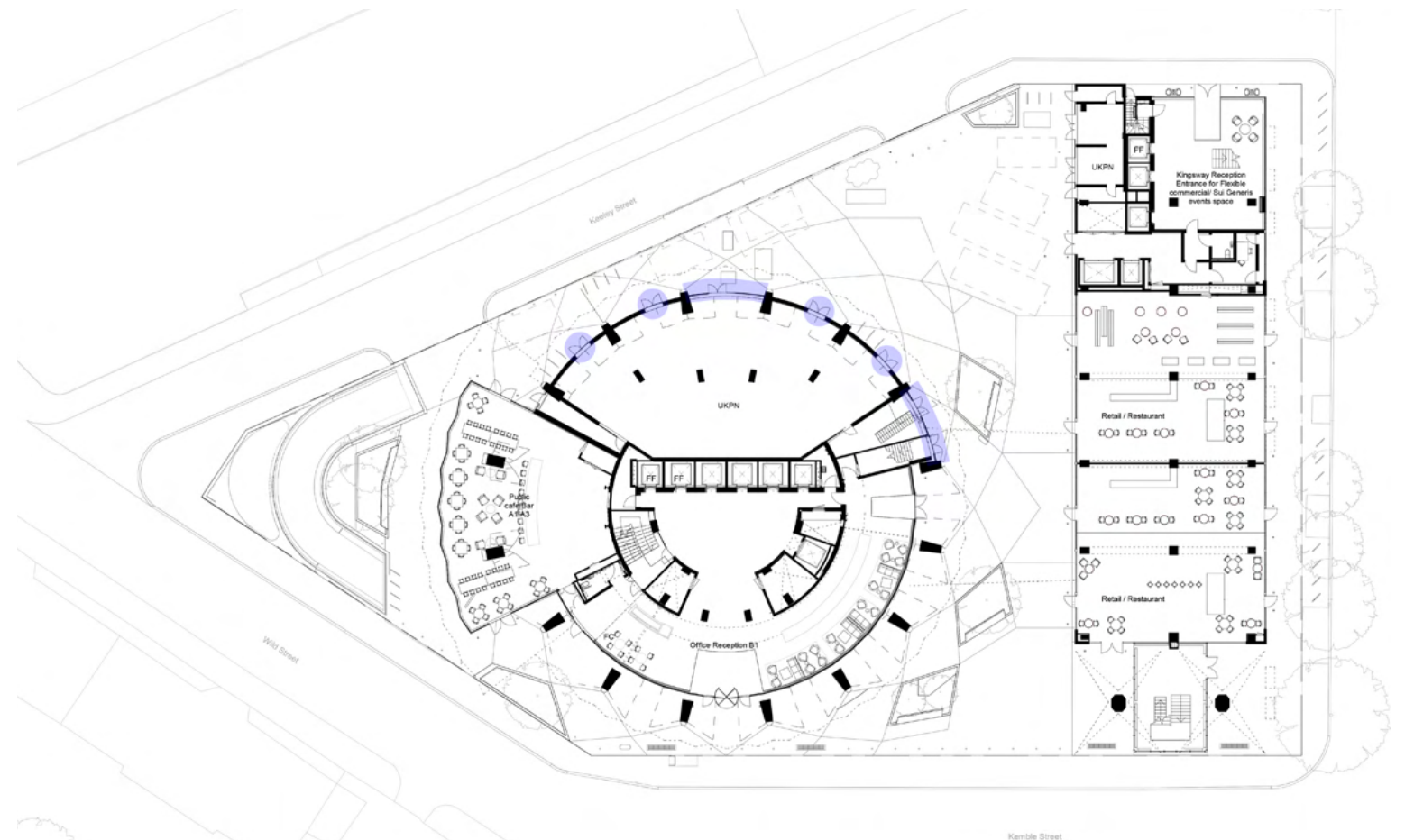


Fig. 2.11.2 Ground Floor Plan - MAT 10 location



2.12 Facing Materials Details - Images

Location	Material	Comments
Tower and Kingsway ground floor curtain walls and doors	Clear glass with manifestation	Camden confirmed that a photo would suffice during site visit 21.02.2022
Tower and Kingsway extension curtain walls and doors	Clear glass with manifestation	Camden confirmed that a photo would suffice during site visit 21.02.2022
Tower ground floor curtain walling frame	Brushed stainless steel	Camden confirmed during site visit 21.02.2022 that this sample is not required as it's a standard finish
Tower and Kingsway extension balustrades	Mild steel frame finish	Camden confirmed during site visit 21.02.2022 that this sample is not required as it's a standard metal balustrade. For images please refer to Planning Condition Report 3LBC a).
Bridge-Link roof glass balustrade	Clear glass balustrade	Camden confirmed during site visit 21.02.2022 that this sample is not required as it's a standard glass balustrade. For images please refer to Planning Condition Report 3LBC a).

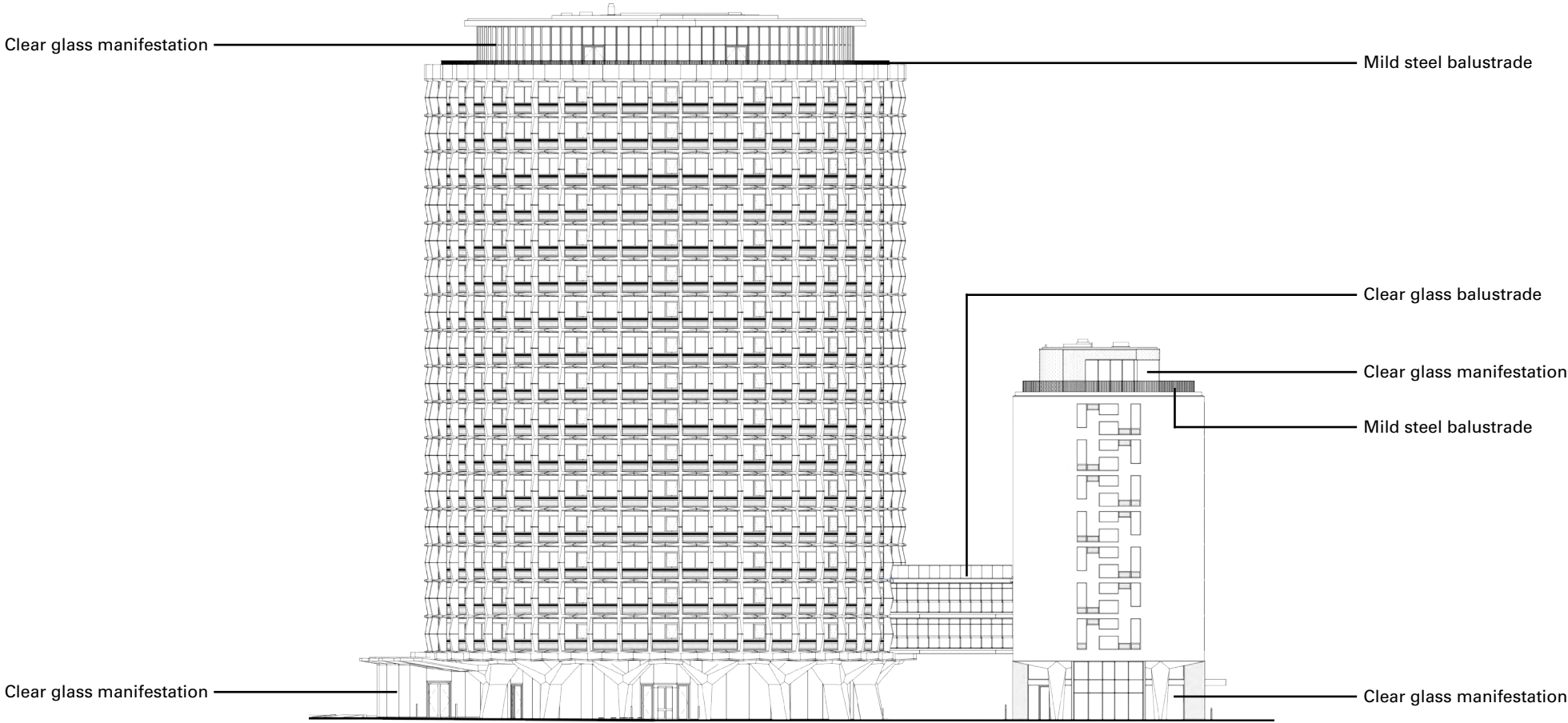


Fig. 2.12.1 South Elevation - Non-required material samples locations



2.13 Outstanding Facing Materials Sample List

The table below sets out the outstanding facing materials proposed at the site. Approval for these materials will be sought under a separate approval of details application to partially discharge condition 3e of the listed building consent. A site visit will also be offered to officers to view the relevant samples in due course.

Location	Material
Kingsway toilets windows units	Double glass unit translucent glass sample
Kingsway canopy aluminium	Black aluminium or PPC finish sample
Kingsway bridge-link façade stone	Granite tile sample to match existing
Kingsway ground floor facade piers	GRC sample to match existing concrete piers
Kingsway north elevation	Rectangular mosaic sample to match existing
Mosaic repair works	Rectangular mosaic sample to match existing
Mosaic repair works	Square mosaic sample to match existing
Bridge-Link balconies balustrade	Stainless steel frame with clear glass infills sample

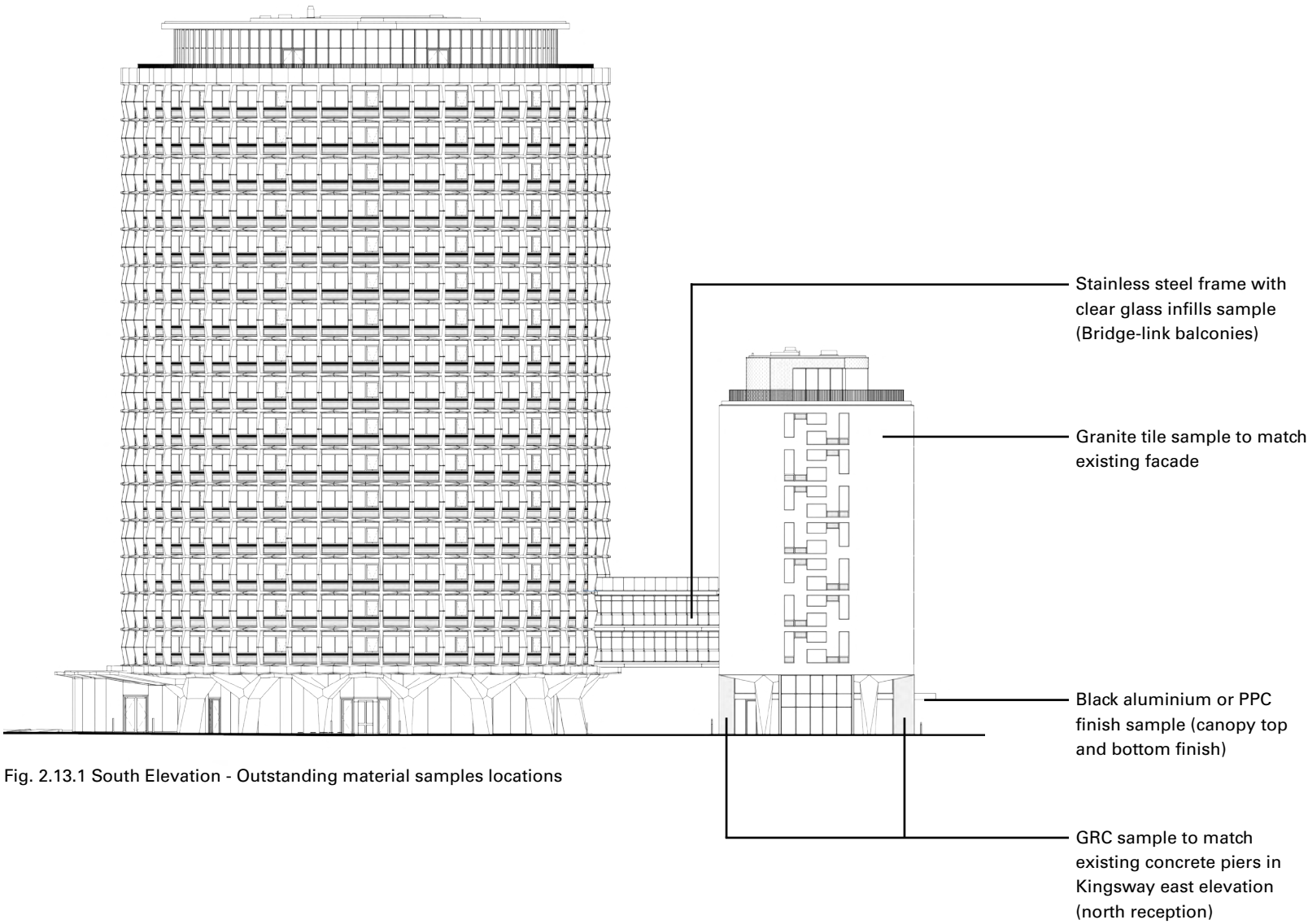


Fig. 2.13.1 South Elevation - Outstanding material samples locations

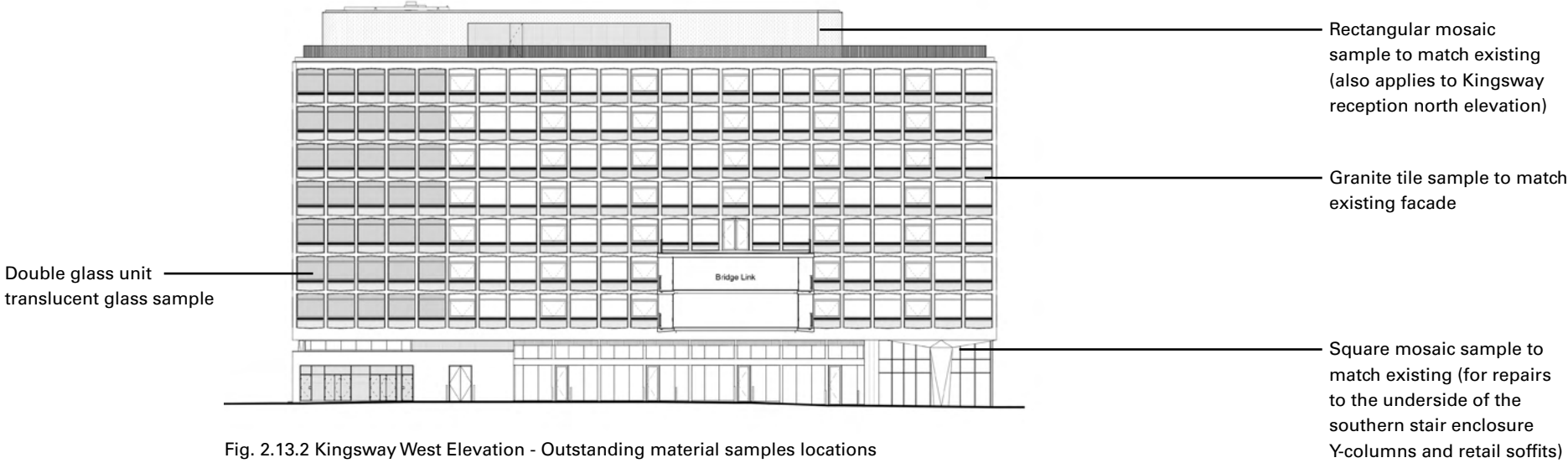


Fig. 2.13.2 Kingsway West Elevation - Outstanding material samples locations



SQUIRE & PARTNERS

The Department Store, 248 Ferndale Road,  
Brixton SW9 8FR  
020 7278 5555   info@squireandpartners.com  
www.squireandpartners.com