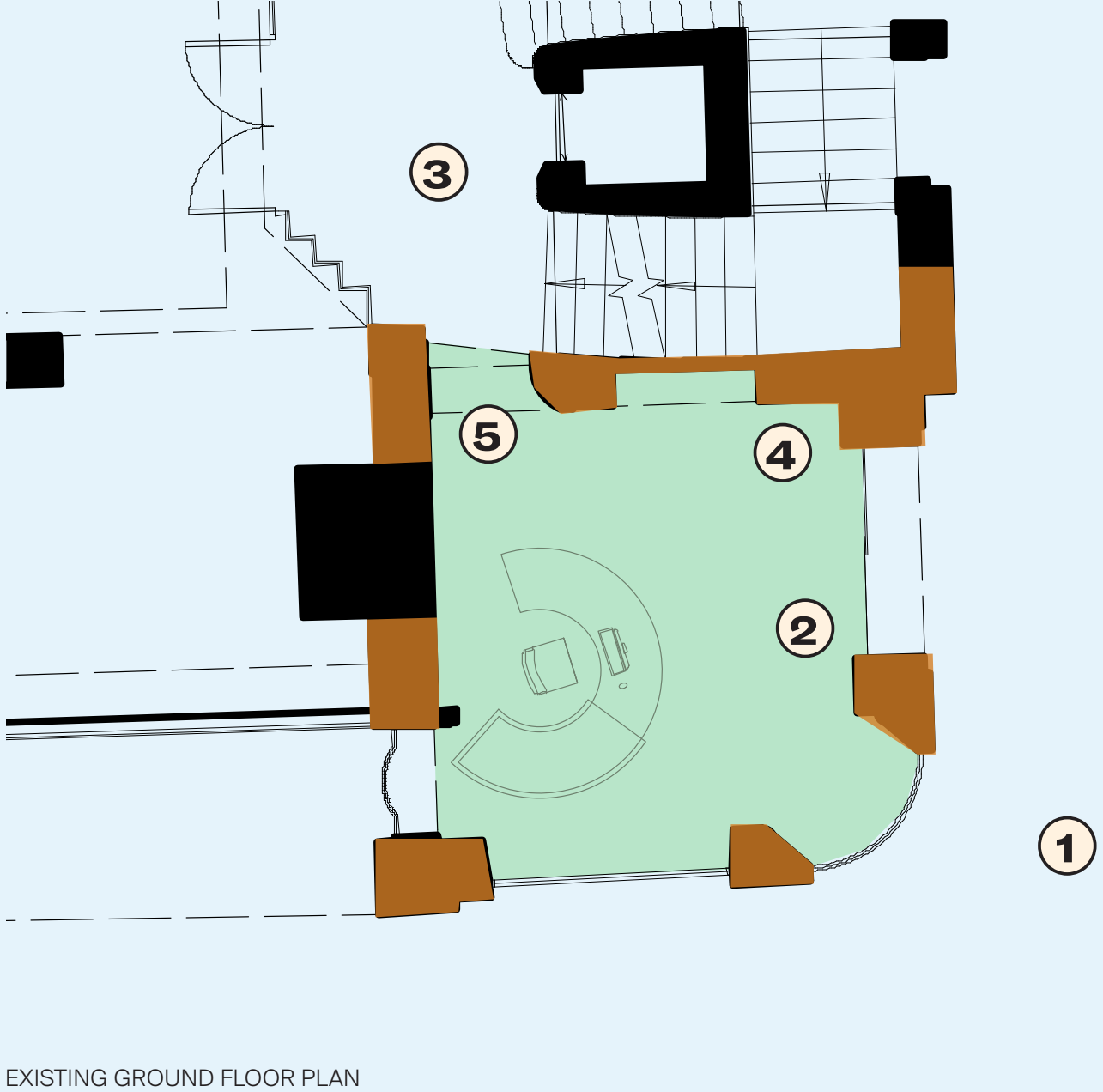


7.02 Areas of Significance

Our proposals illustrated in Section 7.03 are for a light touch refresh of existing finishes with all historic fabric remaining undisturbed by our proposals.

Turley, our heritage consultant has produced the adjacent drawing referencing the heritage significance of existing fabric within this part of the building.

- KEY**
- Scope area
  - High significance
  - Medium significance
  - Low significance
  - Neutral



Alfred Mews Small Reception



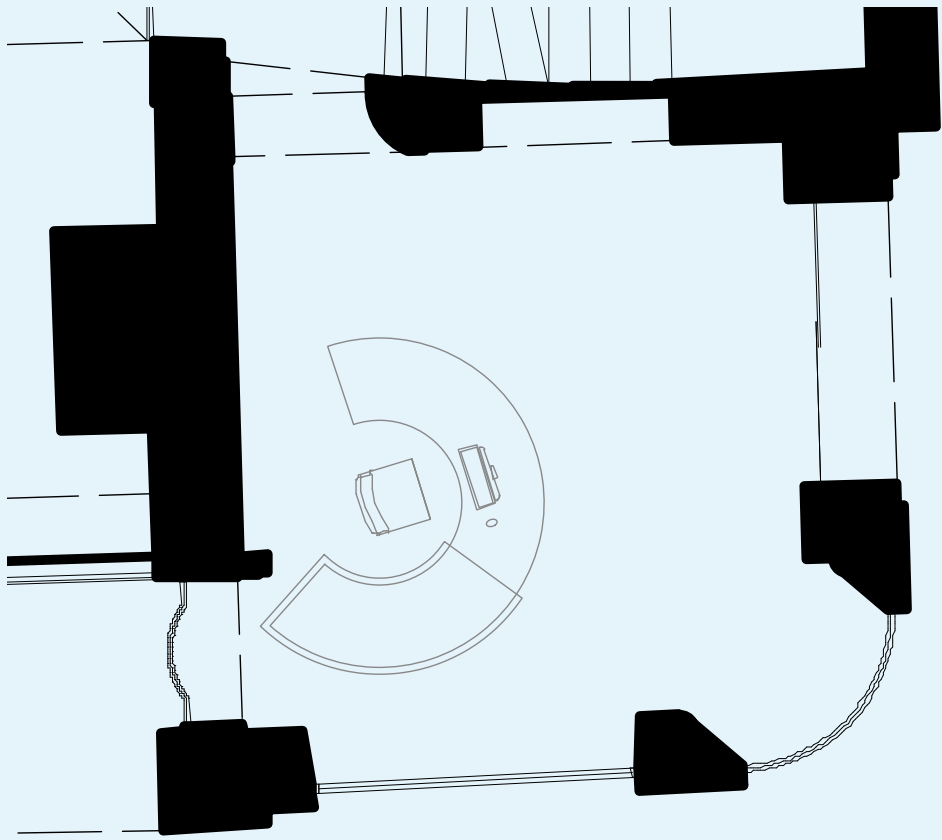
EXISTING PHOTOS OF ALFRED MEWS SMALL RECEPTION



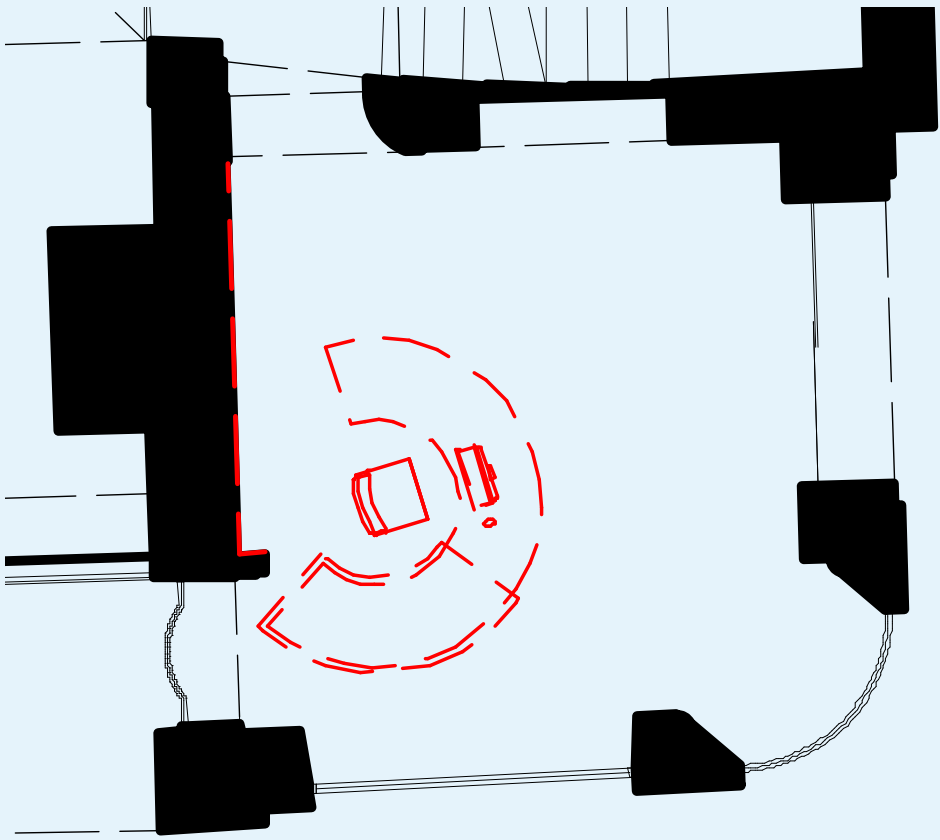
7.03 Existing Condition

The current arrangement has been in place since the 2013 refurbishment and is now dated in appearance.

Our proposals have been developed to offer a 'light touch' refurbishment of the existing modern alterations and to improve Heal's workplace experience and circulation. The refresh of this space will tie in with the wider approach to refurbished workspace on the upper floors of the building.



EXISTING GROUND FLOOR PLAN



DEMOLITION PLAN



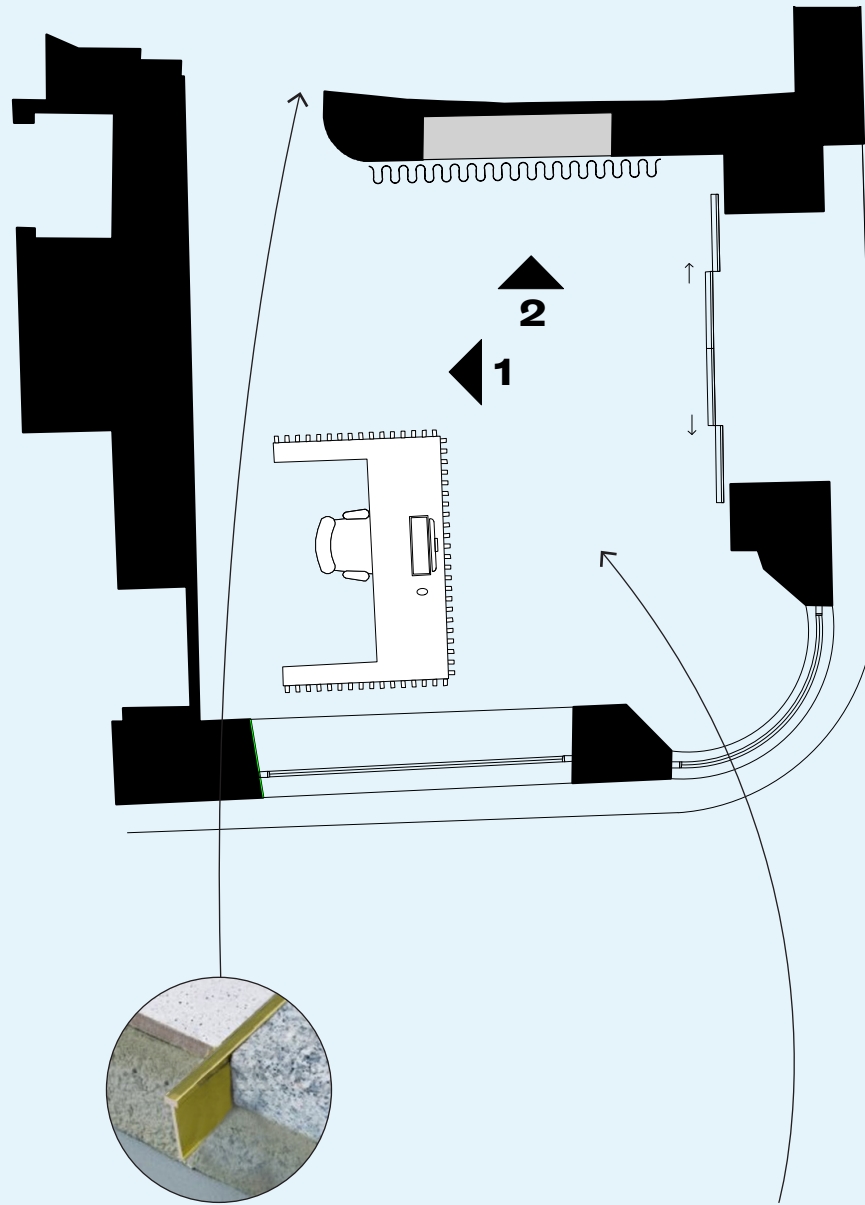
EXISTING GROUND FLOOR CAT A ENTRANCE RECEPTION



EXISTING GROUND FLOOR CAT A RECEPTION FROM LIFT LOBBY WITH HEAL'S SHOP ADJACENT



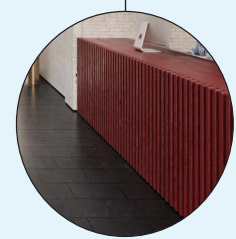
7.04 Proposed Plans



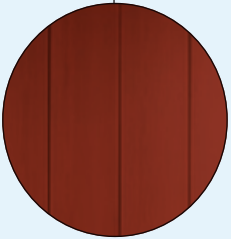
Threshold design to ensure threshold between Heal's shop, the lift lobby and reception is well defined. Bronze/brass edge detail between floor finish changes.

Remove existing carpet, site investigation required to establish if original floor finish remains in good condition

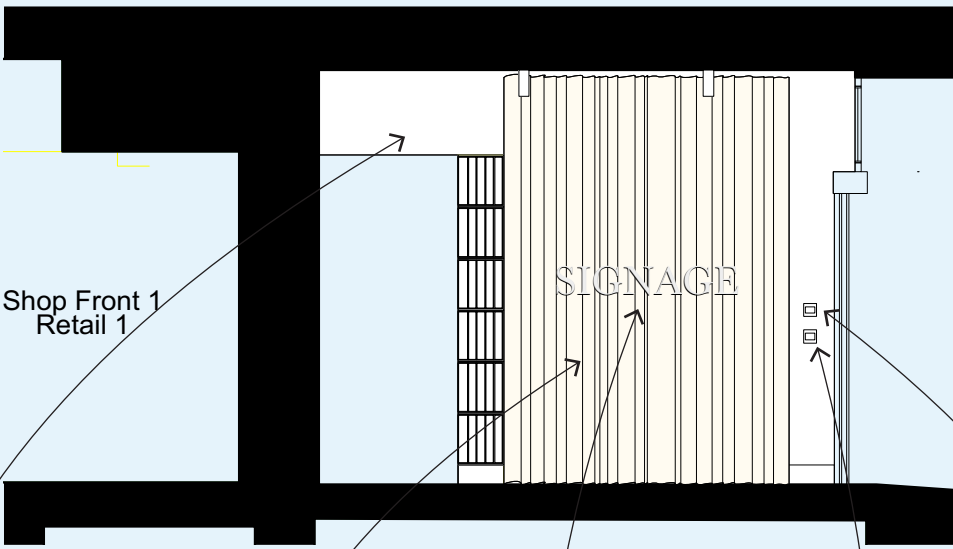
7.05 Proposed Internal Elevations



Red lacquered fluted reception desk

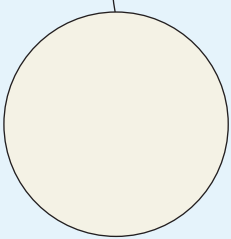


Red lacquered wall panelling

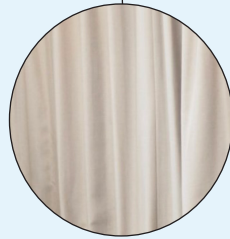


Shop Front 1  
Retail 1

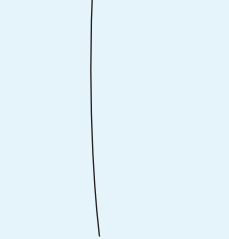
SIGNAGE



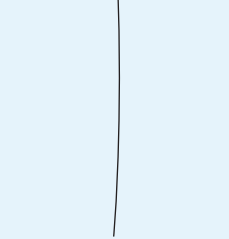
white painted walls + ceiling



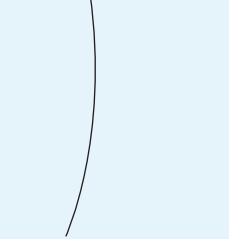
New curtain



New neon signage



Existing Controls to be relocated and rationalised outside of proposed curtain



Existing location of controls to be maintained

# Overview

8.00



### 8.01 **Summary**

Our proposals have been developed to offer a ‘light touch’ refurbishment, focused on updating the existing modern alterations made in 2013 to provide fresh and contemporary receptions.

The alterations will leave all historic fabric undisturbed, whilst removing non original modern additions. Our proposals are intended to improve Heal’s workplace experience and circulation, enlivening the urban block entrances and breathing new life into the existing reception spaces.

The refresh of these spaces ties in with the wider approach to refurbished workspace on the upper floors of the building.

**London**

4.04 The Tea Building  
56 Shoreditch High Street  
London E1 6JJ  
+44 20 7033 9913

**Bristol**

3.01 St Nicholas House  
31-34 High St,  
Bristol BS1 2AW  
+44 117 4566 899