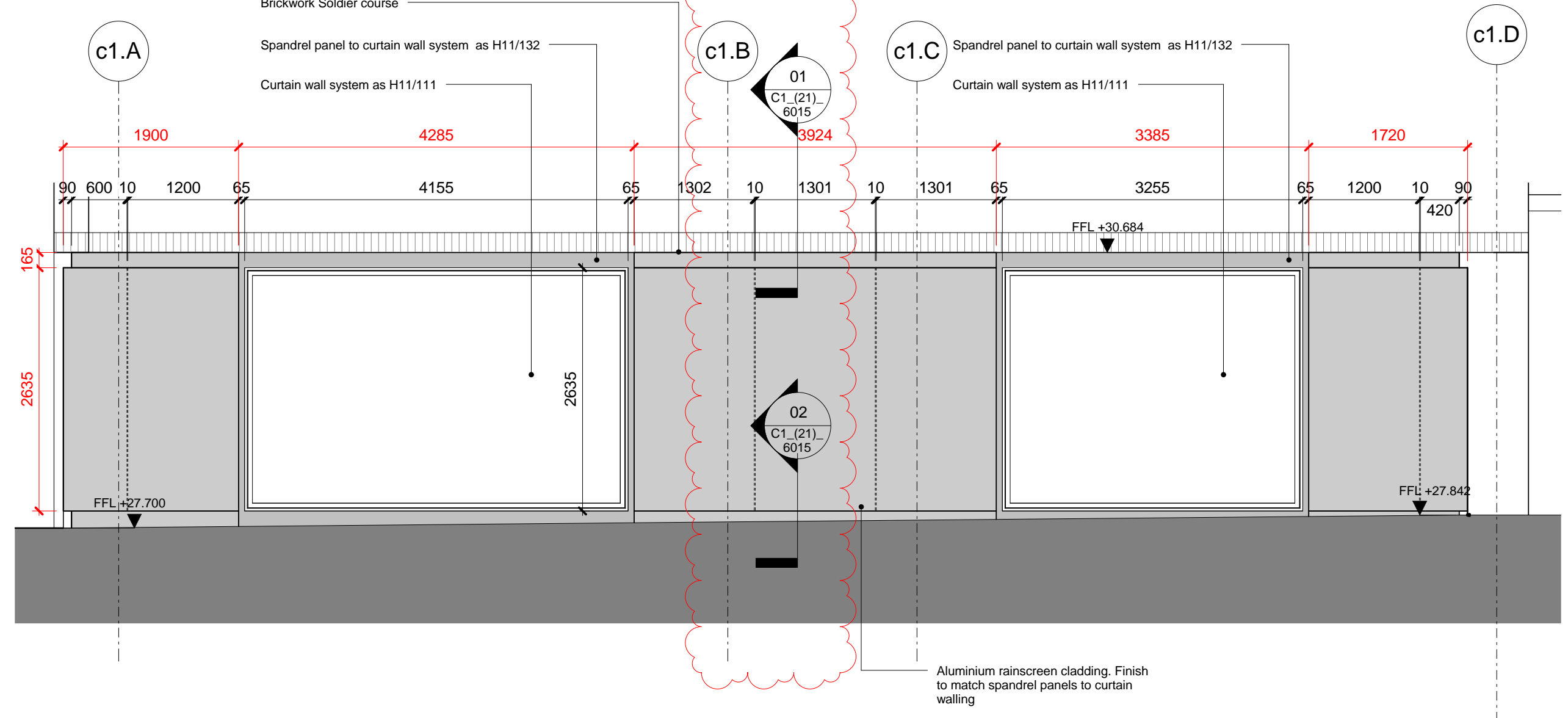
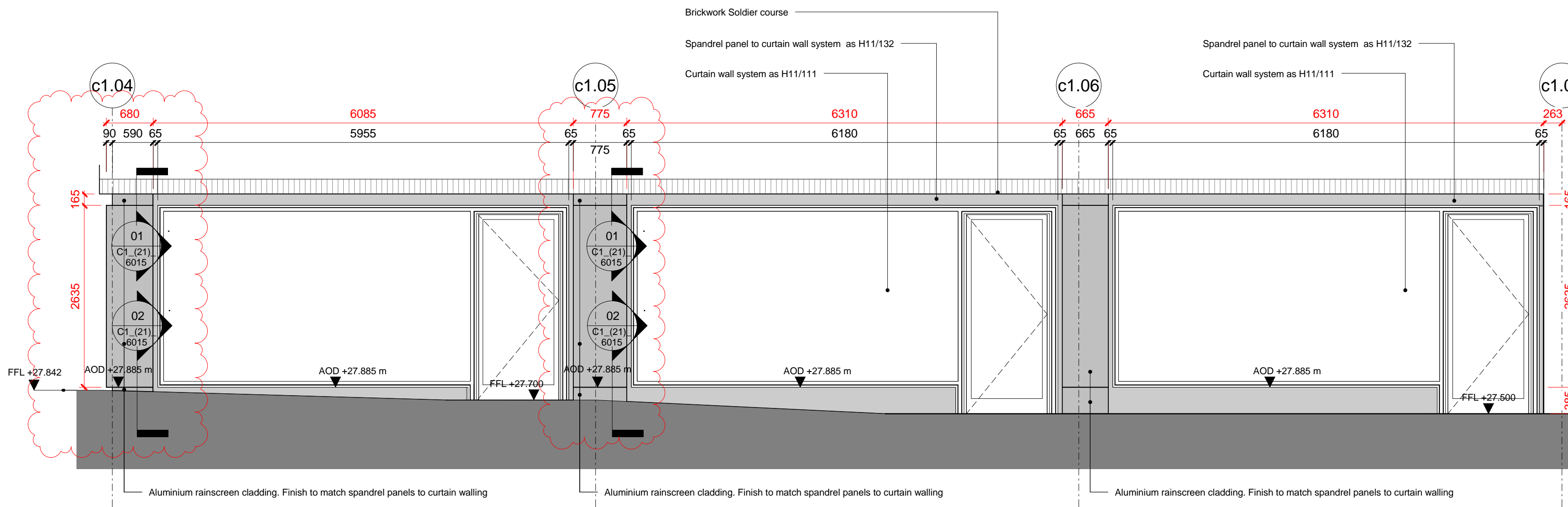


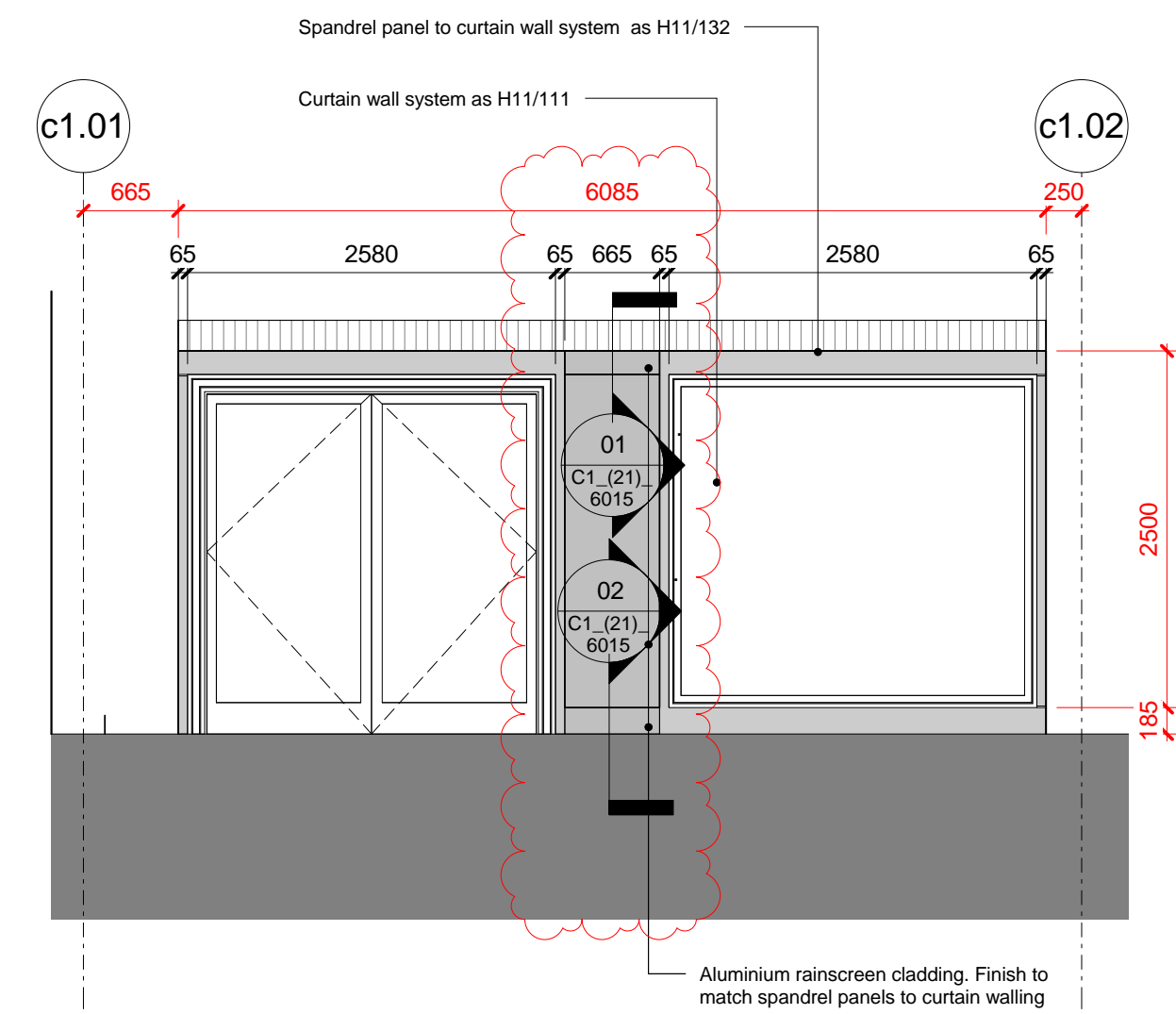
01 RAINSCREEN CLADDING SCOPING - ELEVATION A



02 RAINSCREEN CLADDING SCOPING - ELEVATION B



03 RAINSCREEN CLADDING SCOPING - ELEVATION C



04 RAINSCREEN CLADDING SCOPING - ELEVATION D

		REV		DATE	DESCRIPTION	CONSULTANTS		NOTE				LOCATION		<div>ALLFORD HALL MONAGHAN MORRIS</div> <div>ARCHITECTS Ltd</div> <div>5-23 OLD STREET, LONDON, EC1V 9HL</div> <div>TEL 020 7251 5123 FAX 020 7251 5123 WEB WWW.AHMM.CO.UK</div> <div>job title</div> <div>CAMDEN LOCK VILLAGE</div> <div>drawing title / location</div> <div>RAINSCREEN CLADDING SCOPE C1 ELEVATIONS</div> <div>drawn by checked scale status</div> <div>NH NL 1 : 50 @ A1 CONSTRUCTION</div> <div>project zone C1/S1B drawing no. revision</div> <div>14045 C1_(41)_ 2000 C02</div>		
		C01	23/09/16		ISSUED FOR CONSTRUCTION	CLIENT: Stanley Sidings		1. Do not scale from this drawing.								
		C02	02/02/17		DETAIL REFERENCE ADDED	CONTRACTOR: Mace		2. All dimensions to be checked on site by the contractor and such dimensions to be his responsibility.								
						STRUCTURAL ENGINEER: Walsh Group		3. Report all drawing errors, omissions and discrepancies to the architect.								
						MECHANICAL ENGINEER: AECOM		4. This document may be issued in an uncontrolled CAD format to enable others to use it as background information to make alterations and/or additions. In that instance the file will be accompanied by a PDF version. It is for those making such alterations and additions to ensure that they make use of current background information.								
						COST CONSULTANT: Gardiner & Theobald		AHMM Ltd accepts no liability for any such alterations or additions to the background information or arising out of changes to background information which occur prior to alterations of additions being made.								
						PROJECT MANAGER: Gardiner & Theobald										
						ACOUSTIC CONSULTANT: Hoare Lea										
						TRANSPORT CONSULTANT: Arup										
						PLANNING CONSULTANT: Gerald Eve										
						LANDSCAPE ARCHITECT: Fabrik										
						CDM CO-ORDINATOR: MSA Safety										
						PRINCIPAL DESIGNER: Gardiner & Theobald										
		T 0 1		05/08/16	STAGE F-External facade package											