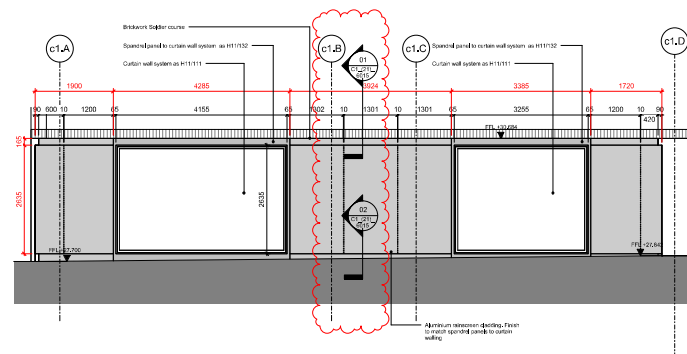




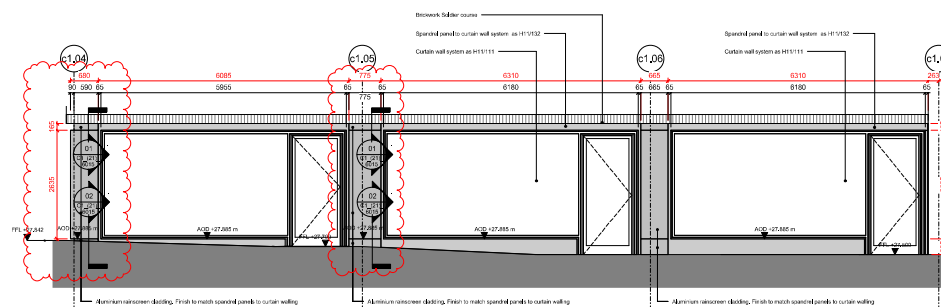
Architectural elevation drawing of a building facade. The drawing includes the following elements and annotations:

- Annotations:**
 - Brickwork Delftware course
 - Expected sand in curtain wall system as H11111
 - Curtain wall system as H11111
 - Aluminium recessed sliding. Finish to match surrounding panels to curtain walling
- Dimensions:**
 - Horizontal dimensions: 325, 100, 2700, 50, 2000, 880, 590, 100.
 - Vertical dimensions: 100, 2000, 50.
- Level Markers:**
 - c1.06
 - c1.05
 - c1.04
- Structural/Detailing Notes:**
 - AD03 107.400 m
 - AD03 107.400 m
 - AD03 107.400 m
- Handwritten Notes:**
 - Handwritten text: "BAGNOL PARK"
- Other Features:**
 - Architectural symbols for windows, doors, and structural elements.
 - A red dashed line outlines a specific section of the facade.

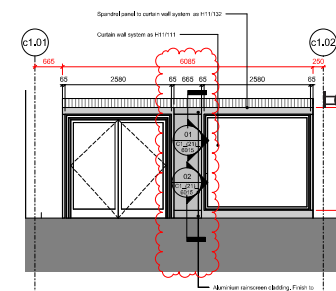
01 RAINSCREEN CLADDING SCOPING - ELEVATION A



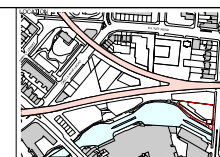
02 RAINSCREEN CLADDING SCOPING - ELEVATION B



03 RAINSCREEN CLADDING SCOPING - ELEVATION C



04 RAINSCREEN CLADDING SCOPING - ELEVATION D

[illegible]

ALLFORD HALL MONAGHAN MORRIS
 ARCHITECTS Ltd
 2ND FL, 105 STREET LONDON, EC1V 1HA,
 UK. TEL: 020 7331 5091 FAX: 020 7331 0123 WEB: WWW.AHM.CO.UK

File No: **CAMDEN LOCK VILLAGE**

drawing title / location:
**RAINSCREEN CLADDING SCOPE C1
 ELEVATIONS**

drawn by NH	checked NL	scale 1:50 @ A1	status CONSTRUCTION
project 14045	zone C1_(41)_2000	drawing no.	rev no. 00



Circular Face Illuminated Sign

Total projected area from wall bracket to sign edge 930.5mm

Sign Size: 800x800x70mm

Fabricated 3mm aluminium circular panel

Powder coated 1 Std Ral Colour.

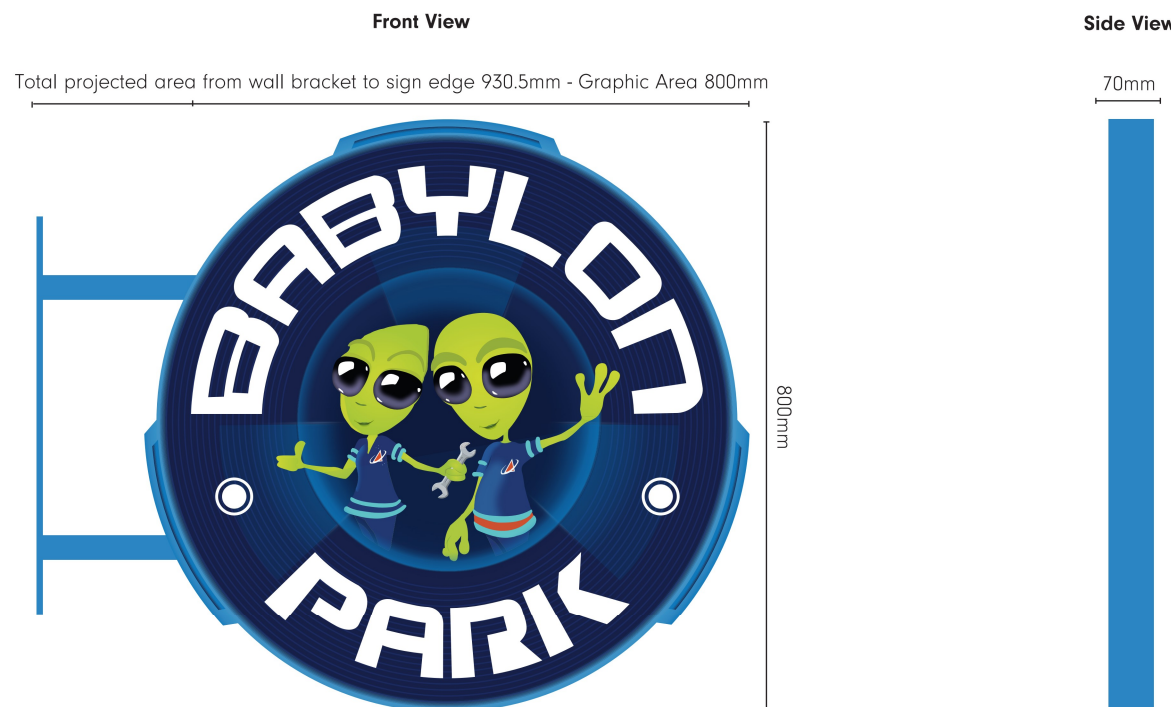
Translucent Printed "BABYLON PARK" + Imagery to be fully illuminated on 3mm opal 050 acrylic.

White LEDs mounted to full 3mm backtray (coated externally to match) to illum.

Illumination - Each letter is static illuminated and can be controlled with both time clock and photocell to operate when dark.

Lumen Calculation - Tray fitted with approximately 30 LED modules resulting in a light production of 101 lumens which is then diffused through opal acrylic to the face. Diffused also through printed translucent film. 60cd/m2 in total over the whole sign area.

Timing - hours that the lighting would be used is 10am-11pm





DAY TIME: LOGO + BADGE ILLUMINATED.



2720mm