

Copyright: All rights reserved. This drawing must not be reproduced without permission.

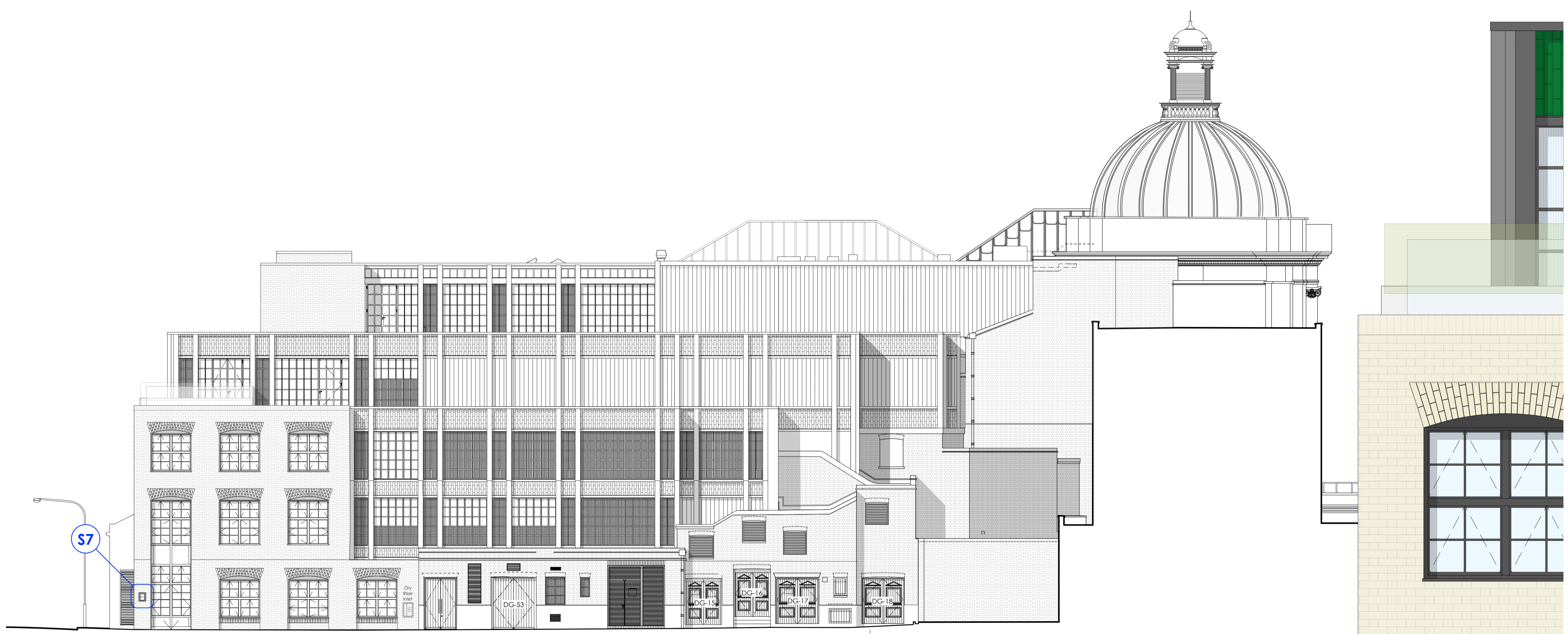
Only the original drawing should be relied upon. Contractors, subcontractors and suppliers must verify all dimensions on site before commencing any work or making any shop drawings.

All shop drawings to be submitted to the architect for comment prior to fabrication.

This drawing is to be read in conjunction with the Architect's specification, bills of quantities / schedules, structural, mechanical & electrical drawings and all discrepancies are to be reported to the architect.

Do not scale from this drawing. Dimensions are in millimetres unless otherwise stated.

revision / date / amendments
- / 28/02/22 / ISSUED FOR PLANNING

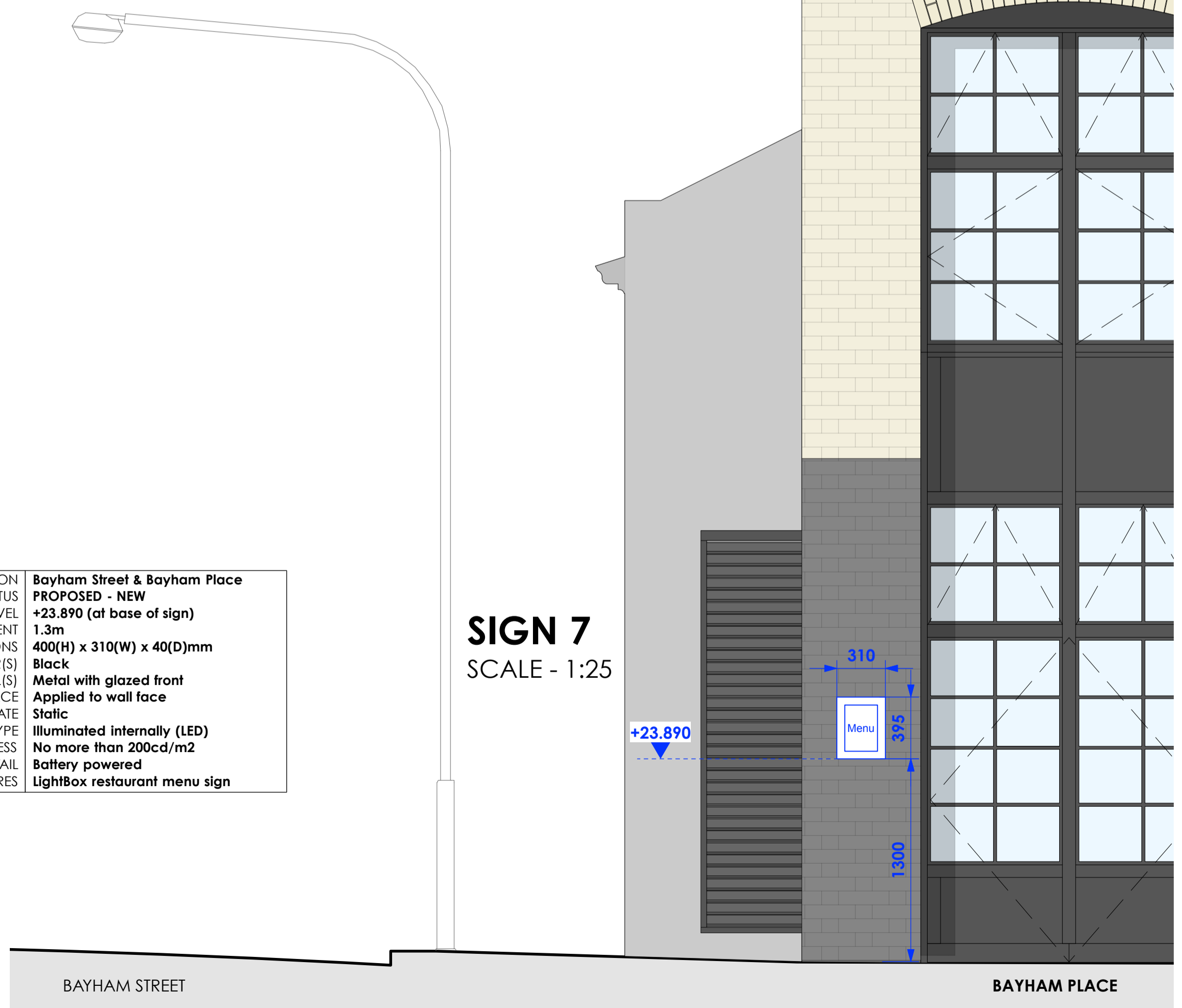


BAYHAM PLACE

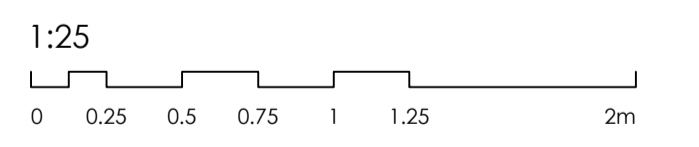
SIGN 7

LOCATION	Bayham Street & Bayham Place
STATUS	PROPOSED - NEW
LEVEL	+23.890 (at base of sign)
LEVEL FROM PAVEMENT	1.3m
DIMENSIONS	400(H) x 310(W) x 40(D)mm
COLOUR(S)	Black
MATERIAL(S)	Metal with glazed front
DISTANCE FROM WALL FACE	Applied to wall face
ILLUMINATION STATE	Static
ILLUMINATION TYPE	Illuminated internally (LED)
LEVELS/BRIGHTNESS	No more than 200cd/m2
DETAIL	Battery powered
SPECIAL FEATURES	LightBox restaurant menu sign

SIGN 7
SCALE - 1:25



28.02.2022



PLANNING

Archer Humphryes Architects

Basement
Central House
142 Central Street
London, United Kingdom
EC1V 8AR
T: +44 (0) 20 7251 8555

project title	KOKO + Hope & Anchor + Bayham Place Camden, London		
drawing title	scale	date	
PROPOSED SIGNAGE DETAILS BAYHAM PLACE	1:25 @A1	21.02.22	
drawing number	drawn	checked	
AHA/KKR/ PR /2035N	PD	DA	
	revision		
	-		