

Copyright: All rights reserved. This drawing must not be reproduced without permission.
 Only the original drawing should be relied upon. Contractors, subcontractors and suppliers must verify all dimensions on site before commencing any work or making any shop drawings.
 All shop drawings to be submitted to the architect for comment prior to fabrication.
 This drawing is to be read in conjunction with the Architect's specification, bills of quantities / schedules, structural, mechanical & electrical drawings and all discrepancies are to be reported to the architect.
 Do not scale from this drawing. Dimensions are in millimetres unless otherwise stated.

revision / date / amendments
 - / 28/02/22 / ISSUED FOR PLANNING

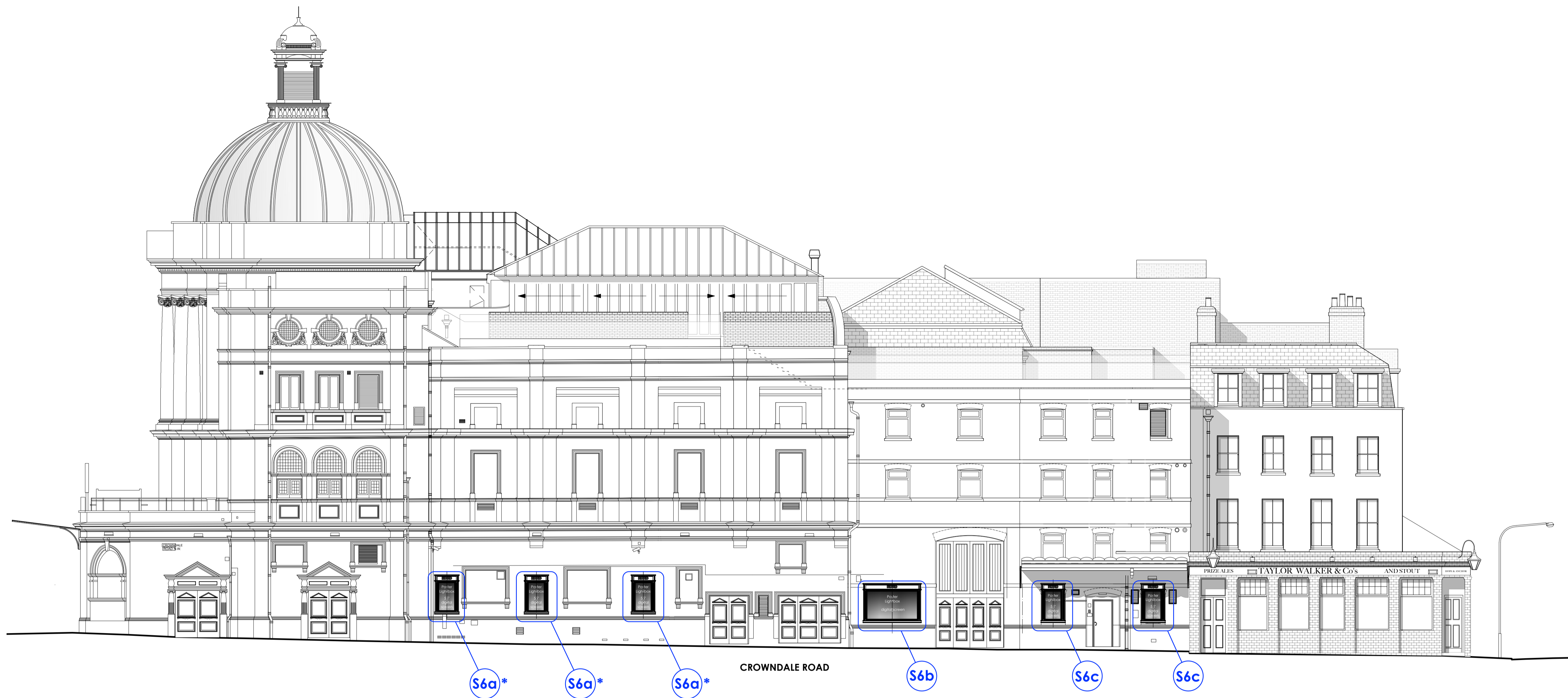
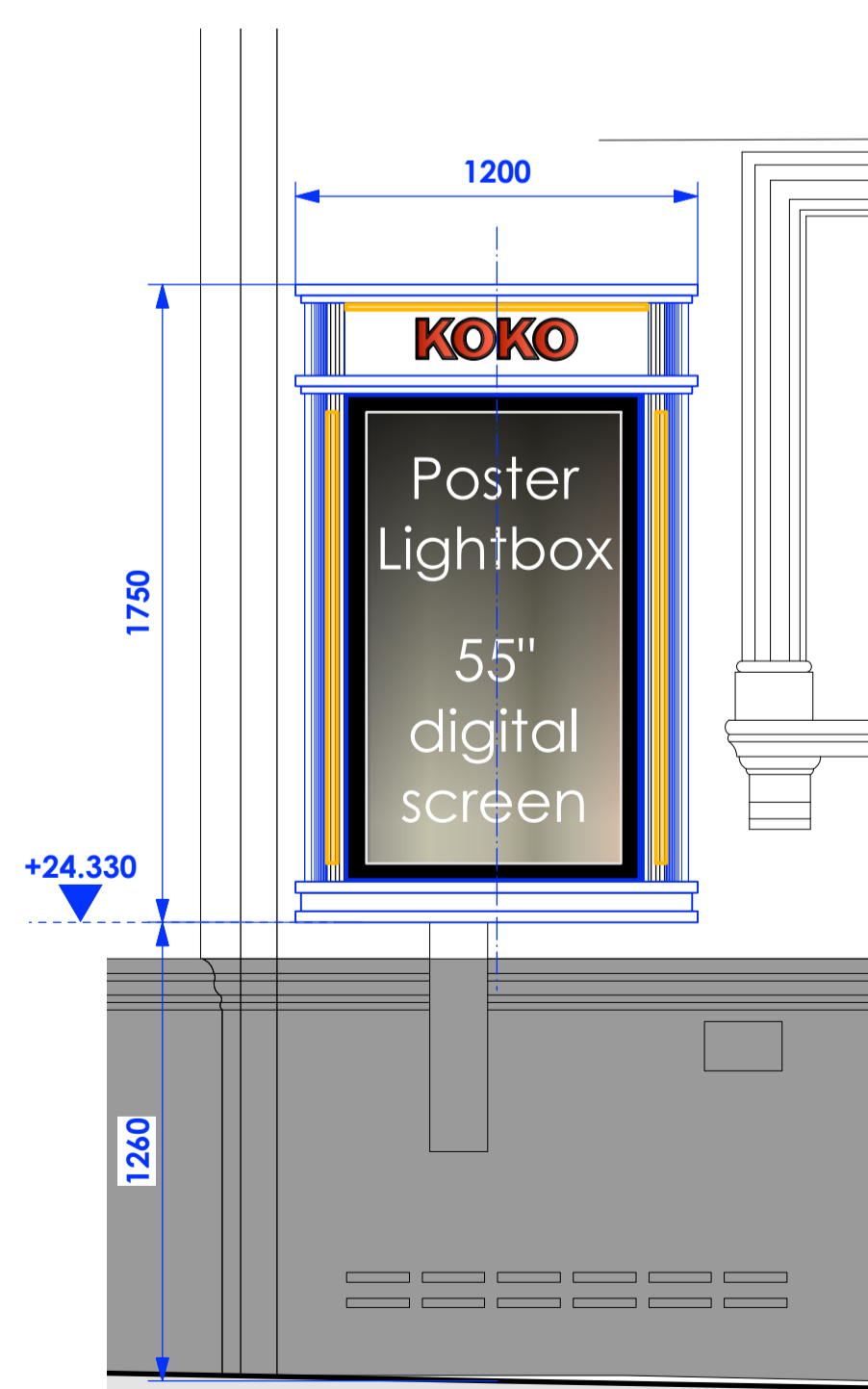


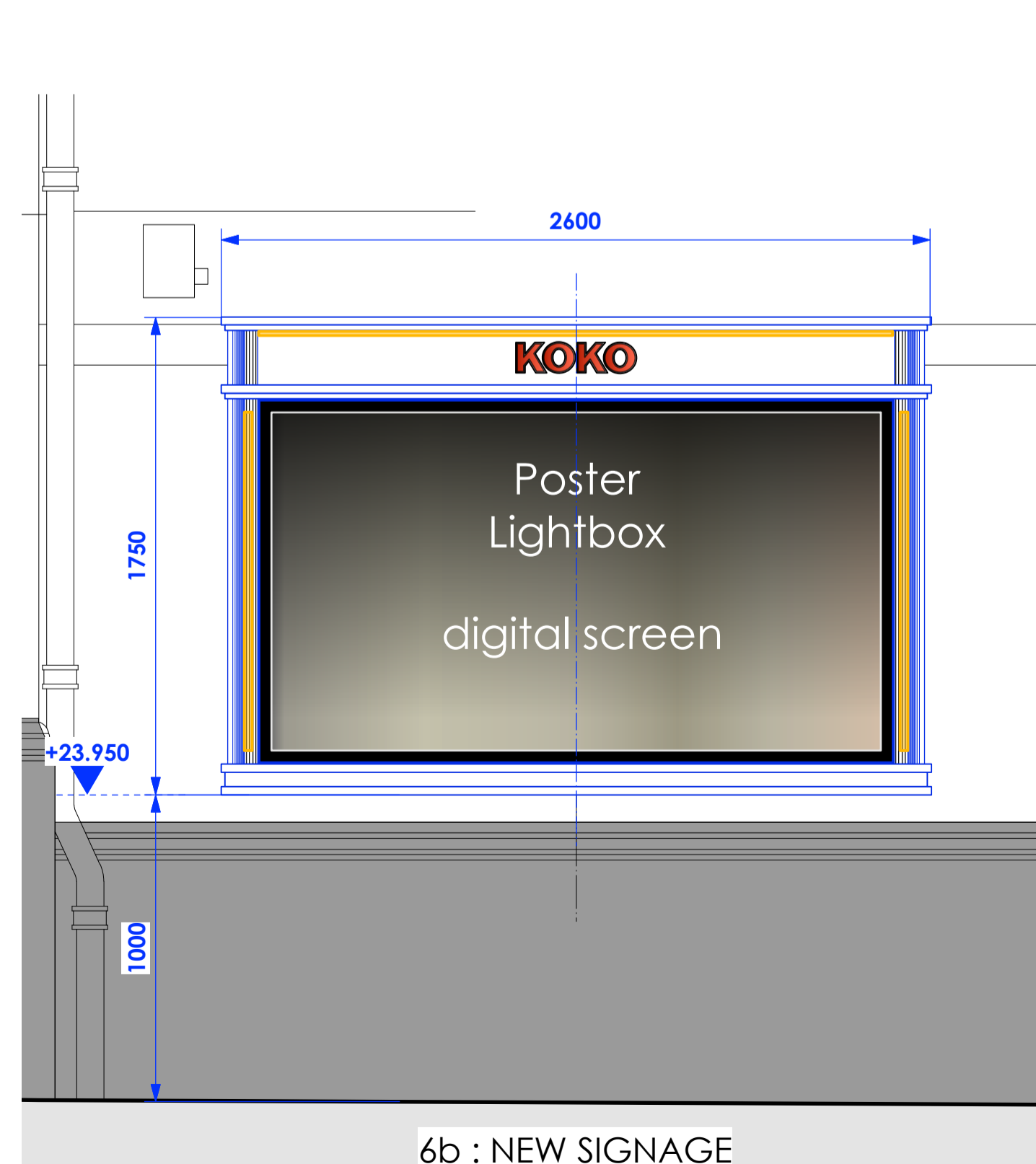
Photo : SIGNS 6a - showing existing advertisement signage on Crowndale Road

SIGN 6a
SCALE - 1:20



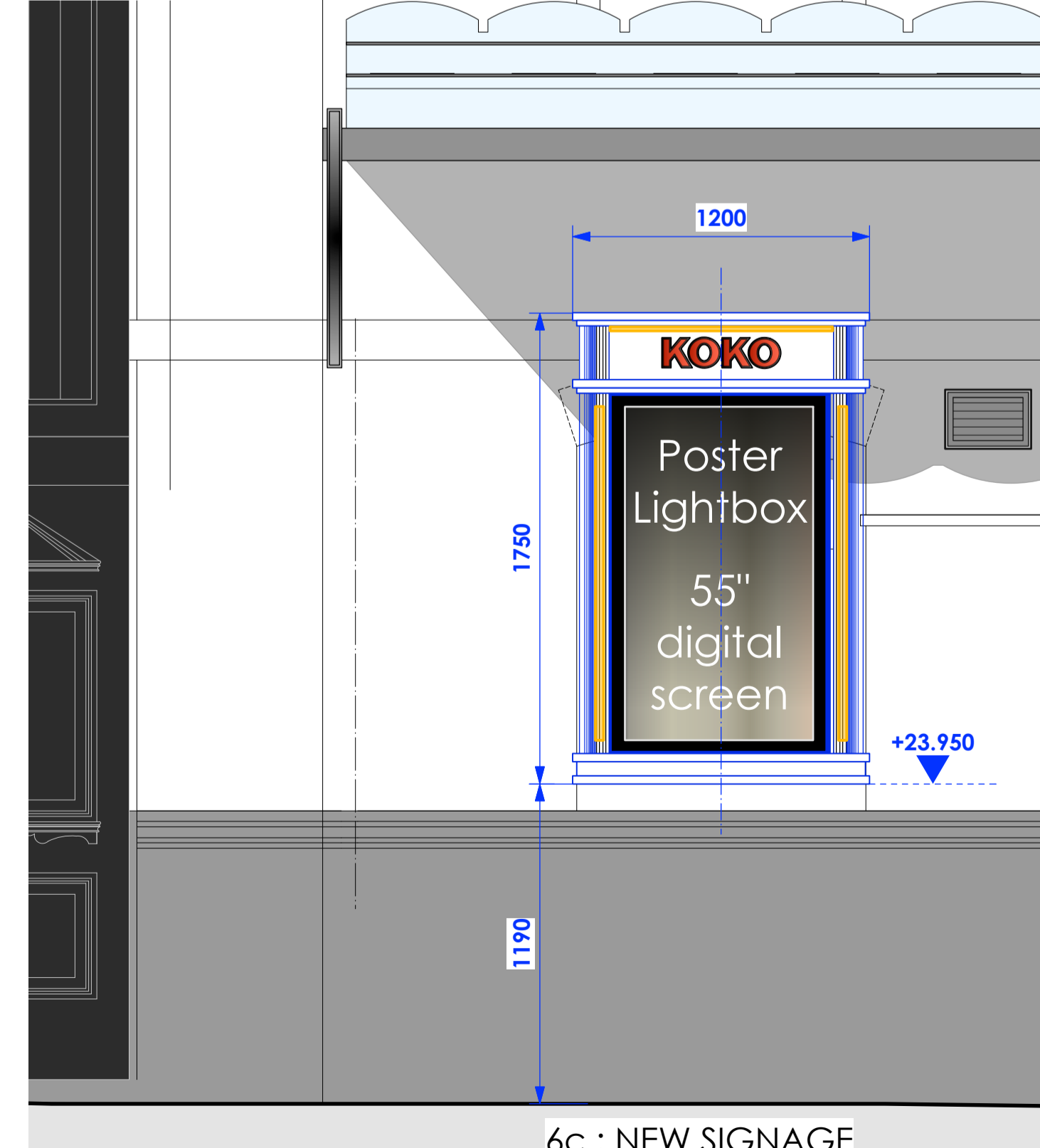
* 6a : EXISTING SIGNAGE UPGRADED

SIGN 6b
SCALE - 1:20



6b : NEW SIGNAGE

SIGN 6c
SCALE - 1:20

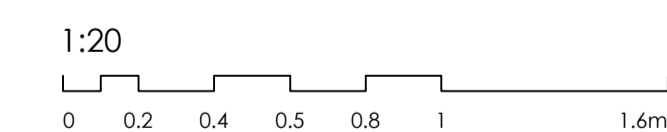


6c : NEW SIGNAGE

SIGNS 6 abc

LOCATION	Crowndale Road - GF
STATUS	EXISTING UPGRADED & PROPOSED NEW
LEVEL	+23.950 and 24.330 (at base of sign)
LEVEL FROM PAVEMENT	from 1.0 to 1.3m (approx.)
DIMENSIONS	See details
COLOUR(S)	Timber encasement
MATERIAL(S)	Timber frame, glass with display screen
DISTANCE FROM WALL FACE	Applied to wall face
ILLUMINATION STATE	Static/intermittent
ILLUMINATION TYPE	Illuminated internally (digital display)
LEVELS/BRIGHTNESS	No more than 200cd/m2
DETAIL	Koko events poster screens
SPECIAL FEATURES	Illuminated Timber Encasements

28.02.2022



PLANNING

Archer Humphries Architects

Basement
 Central House
 142 Central Street
 London, United Kingdom
 EC1V 8AR
 T: +44 (0) 20 7251 8555

project title	KOKO + Hope & Anchor + Bayham Place Camden, London		
drawing title	PROPOSED SIGNAGE DETAILS CROWDALE ROAD	scale	1:20 @ A1
drawing number	AHA/KKR/ PR /2015N	date	16.02.22
		drawn	PD
		checked	DA
		revision	-