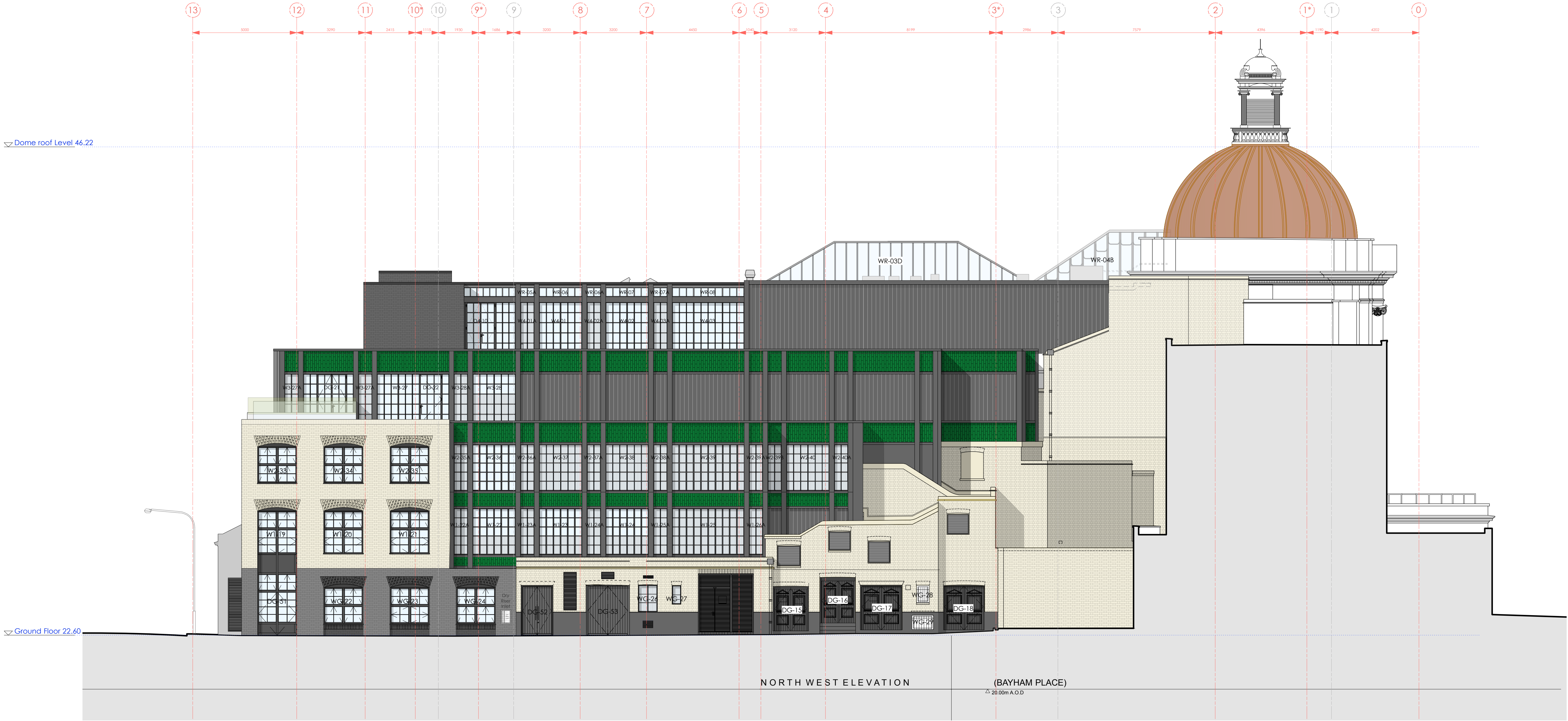
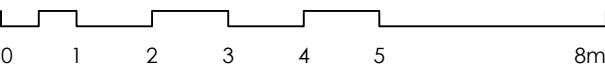


revision / date / amendments		
- /	25/10/21 /	1. First Issue



25.10.2021



## PLANNING

Archer Humphryes Architects

Basement  
Central House  
142 Central Street  
London, United Kingdom  
EC1V 8AR  
T: +44 (0) 20 7251 8555

project title		scale	date
KOKO + Hope & Anchor + Bayham Place		1:100 @ A1	25.10.21
Camden, London		drawn	checked
drawing title		FR	DA
Existing Bayham Place Elevation		revision	-
Signage + Lighting			
drawing number			
AHA/KKC/ EX /203			