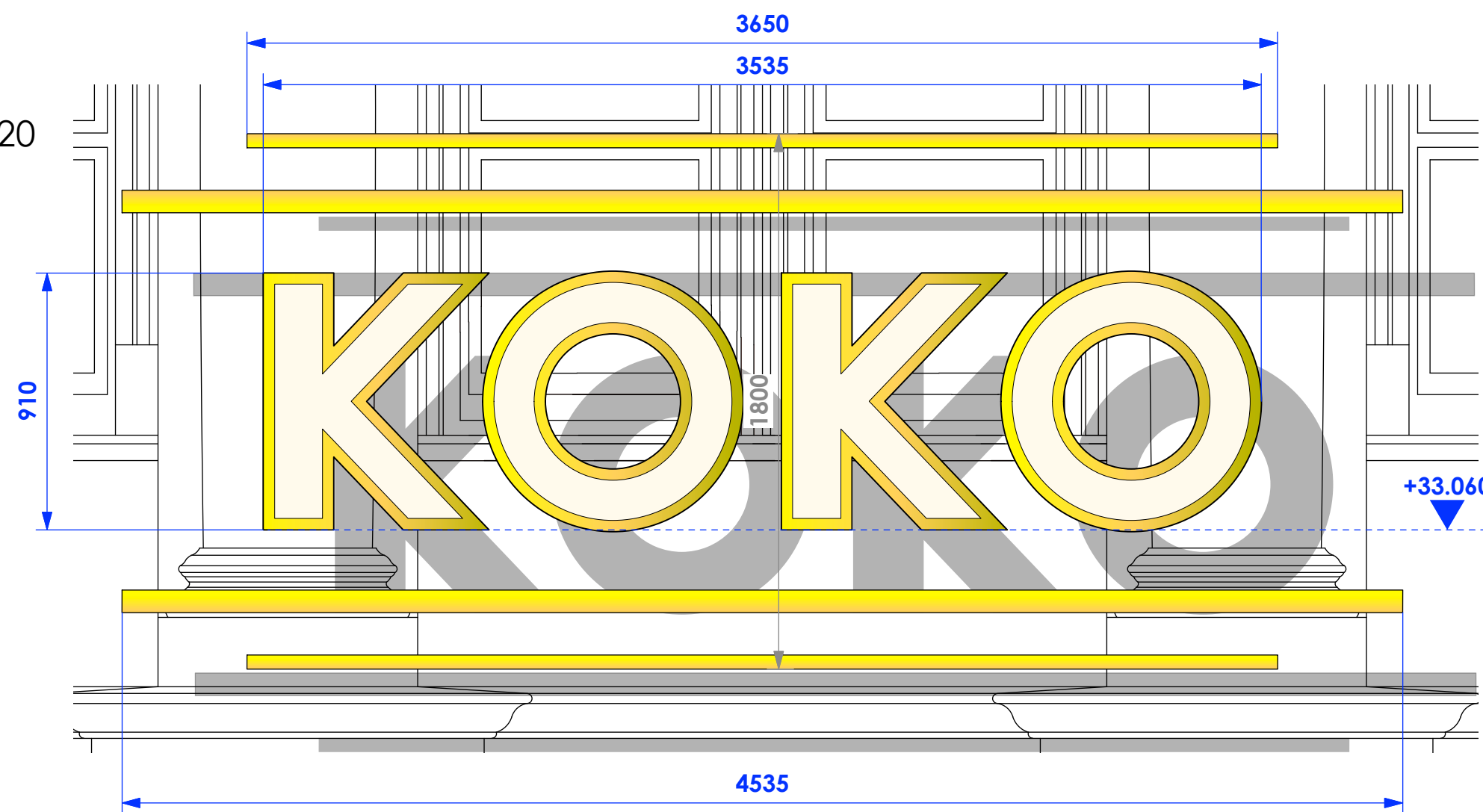


Copyright: All rights reserved. This drawing must not be reproduced without permission.
 Only the original drawing should be relied upon. Contractors, subcontractors and suppliers must verify all dimensions on site before commencing any work or making any shop drawings.
 All shop drawings to be submitted to the architect for comment prior to fabrication.
 This drawing is to be read in conjunction with the Architect's specification, bills of quantities / schedules, structural, mechanical & electrical drawings and all discrepancies are to be reported to the architect.
 Do not scale from this drawing. Dimensions are in millimetres unless otherwise stated.

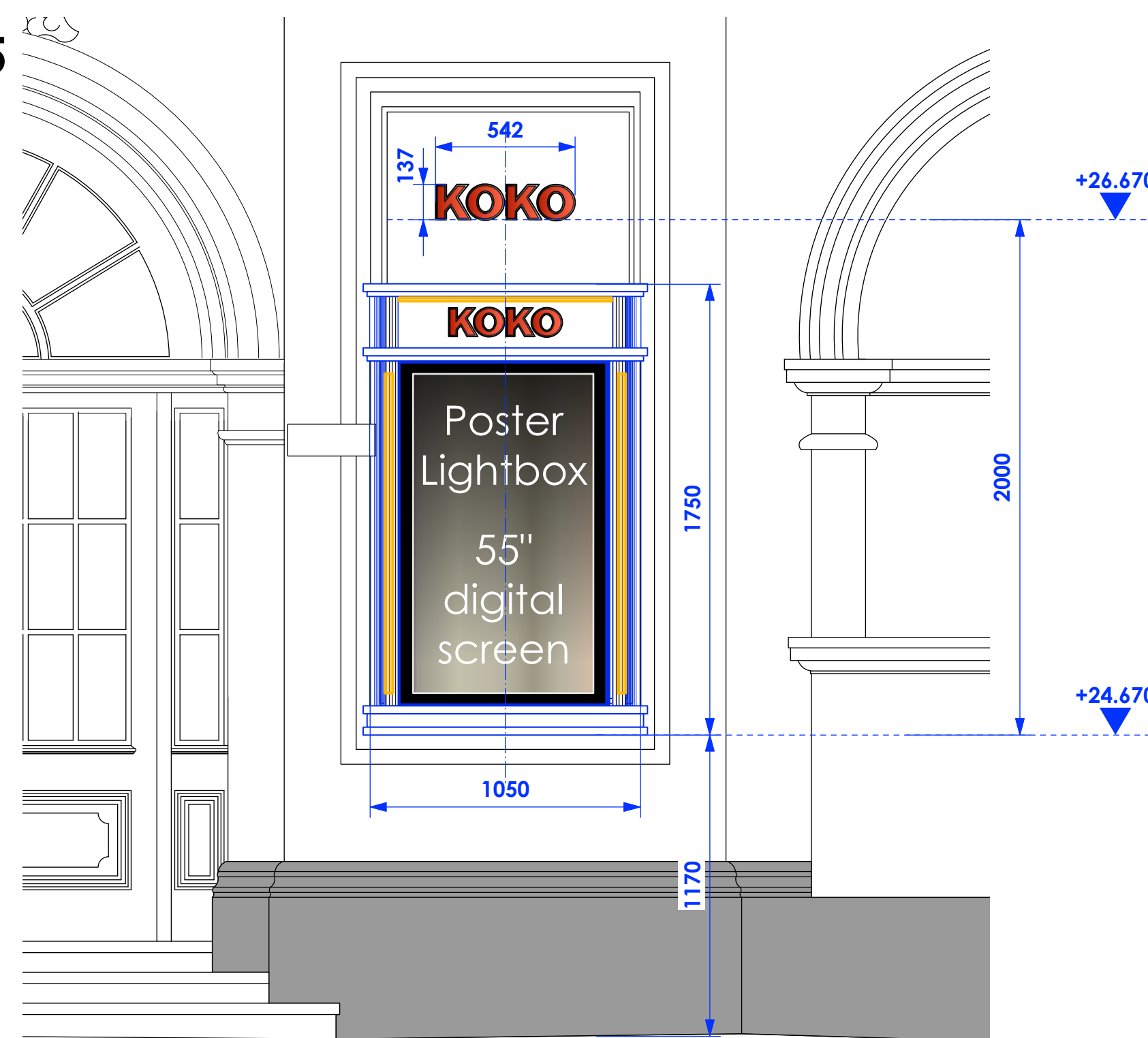
revision / date / amendments
 - / 11/03/22 / ISSUED FOR PLANNING

SIGN 1
 SCALE - 1:20



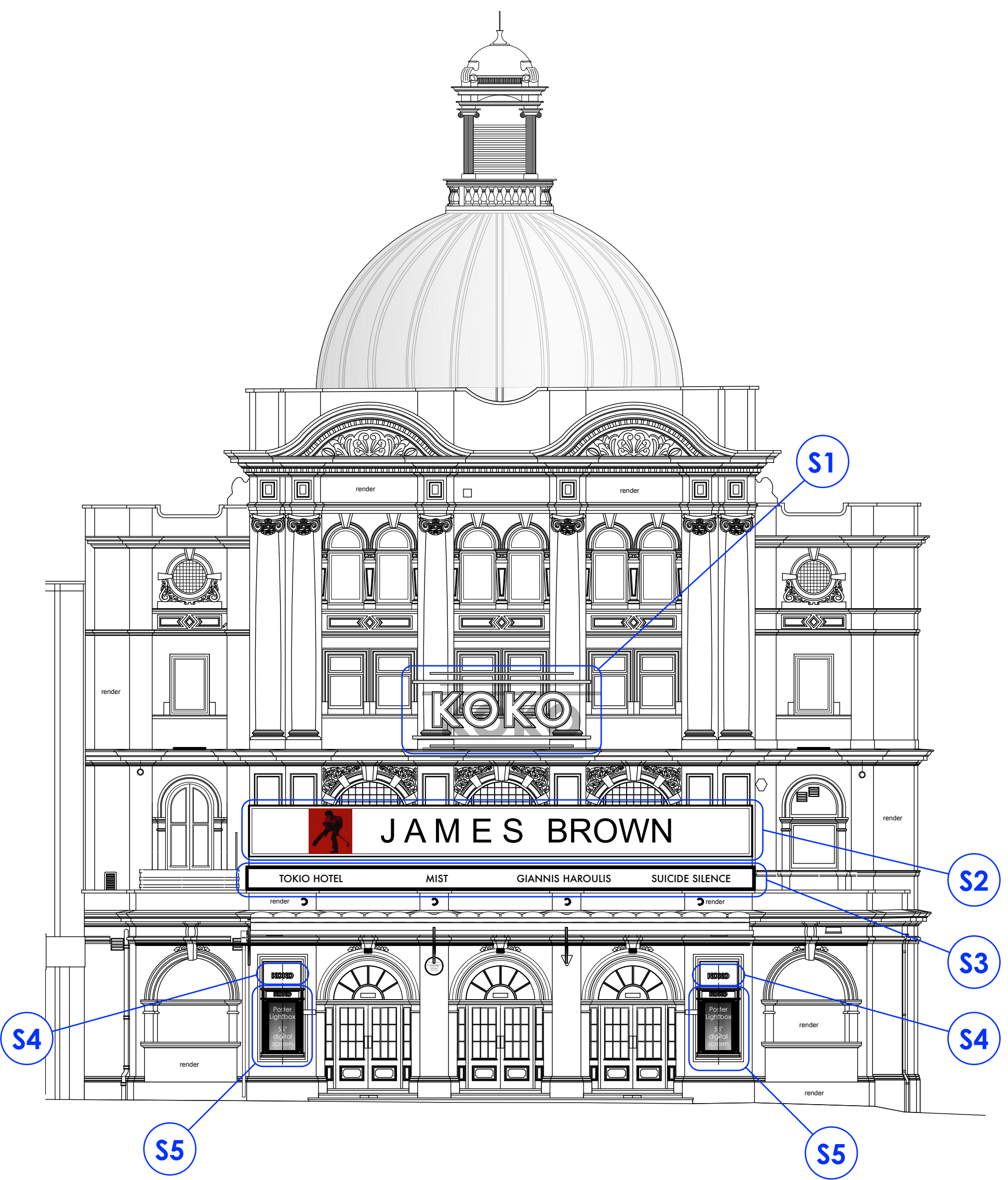
SIGN 1	LOCATION STATUS LEVEL LEVEL FROM PAVEMENT DIMENSIONS COLOUR(S) MATERIAL(S) DISTANCE FROM WALL FACE ILLUMINATION STATE ILLUMINATION TYPE LEVELS/BRIGHTNESS DETAIL SPECIAL FEATURES	Front façade – 3rd floor EXISTING – TO BE UPGRADED TO NEW +33.056 (at base of sign) 9.54m 910(H) x 3535(W) x 150(D)mm Silver, red and opal/white Powder coated steel & polycarbonate Applied to wall face with brackets Static LIGHT BOX - internally illuminated red No more than 200cd/m2 Similar design but with updated font Gold metal strips with red illumination
---------------	---	---

SIGNS 4 & 5
 SCALE - 1:20

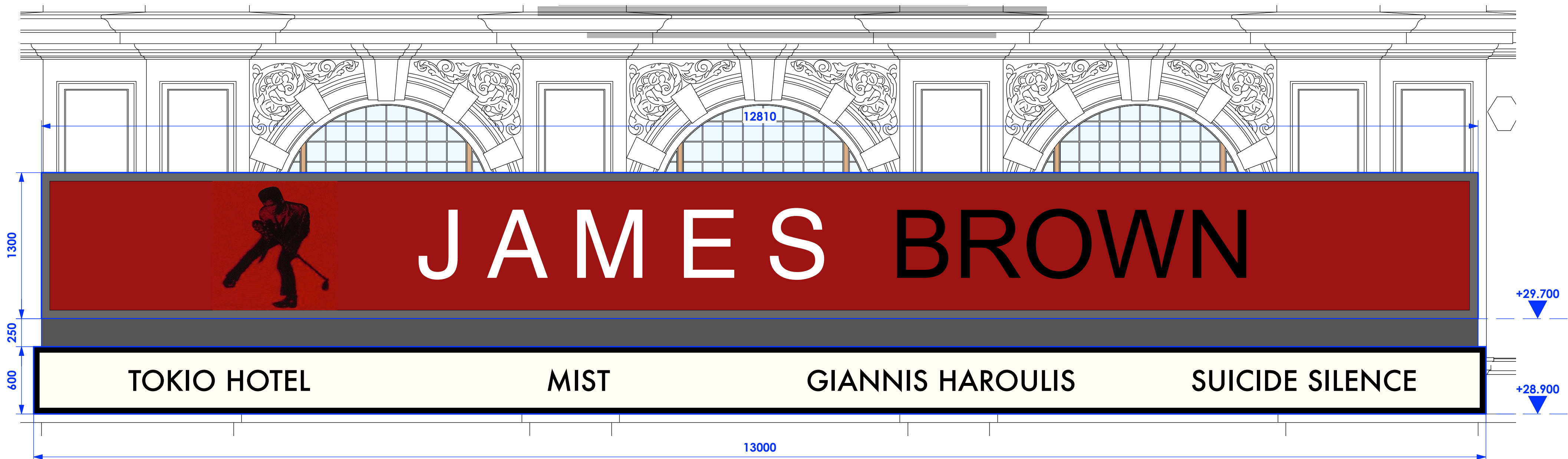


SIGN 4	LOCATION STATUS LEVEL LEVEL FROM PAVEMENT DIMENSIONS COLOUR(S) MATERIAL(S) DISTANCE FROM WALL FACE ILLUMINATION STATE ILLUMINATION TYPE LEVELS/BRIGHTNESS DETAIL SPECIAL FEATURES	Front façade – GF, clerestory level PROPOSED - NEW +26.670 (at base of sign) 3.15m 150(H) x 600(W) x 100(D)mm Antique Brass and red letters Brass Applied to wall face Static Not illuminated N/A Koko logo sign within decorative molding
---------------	---	---

SIGN 5	LOCATION STATUS LEVEL LEVEL FROM PAVEMENT DIMENSIONS COLOUR(S) MATERIAL(S) DISTANCE FROM WALL FACE ILLUMINATION STATE ILLUMINATION TYPE LEVELS/BRIGHTNESS DETAIL SPECIAL FEATURES	Front façade – GF EXISTING – TO BE UPGRADED +24.670 (at base of sign) 1.17m 1750(H) x 1050(W) x 300(D)mm Varnished wood Timber and glass with (LED screens) Applied to wall face Static/intermittent Illuminated internally & LED screen) No more than 200cd/m2 Koko events poster screens Symmetrically on façade
---------------	---	---



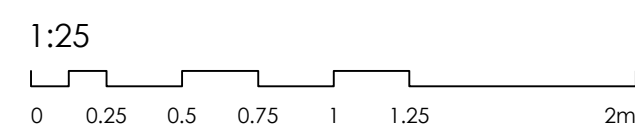
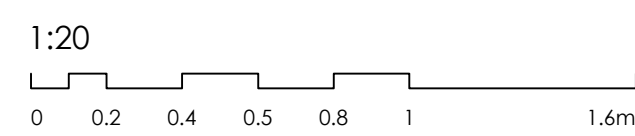
SIGNS 2&3
 SCALE - 1:25



SIGN 2	LOCATION STATUS LEVEL LEVEL FROM PAVEMENT DIMENSIONS COLOUR(S) MATERIAL(S) DISTANCE FROM WALL FACE ILLUMINATION STATE ILLUMINATION TYPE LEVELS/BRIGHTNESS DETAIL SPECIAL FEATURES	Front façade – top of parapet PROPOSED - NEW +29.700 (at base of sign) 4.27m 1300(H) x 12810(W) x 200(D)mm Changes at each new event Stainless steel & polycarbonate 5.8m (approx.) from main façade Static Light Box No more than 200cd/m2 New sign to advertise events at KOKO Graphic change at each new event
---------------	---	--

SIGN 3	LOCATION STATUS LEVEL LEVEL FROM PAVEMENT DIMENSIONS COLOUR(S) MATERIAL(S) DISTANCE FROM WALL FACE ILLUMINATION STATE ILLUMINATION TYPE LEVELS/BRIGHTNESS DETAIL SPECIAL FEATURES	Front façade – top of parapet PROPOSED - NEW +28.900 (at base of sign) 5.36m 600(H) x 13000(W) x 200(D)mm White (background), Black (letters) Stainless steel & polycarbonate 5.8m (approx.) from main façade Static Light Box No more than 200cd/m2 Linear message board Lettering changes at each new event
---------------	---	--

11.03.2022



PLANNING

Archer Humphries Architects

Basement
 Central House
 142 Central Street
 London, United Kingdom
 EC1V 8AR
 T: +44 (0) 20 7251 8555

project title	KOKO + Hope & Anchor + Bayham Place Camden, London	
drawing title	scale	date
PROPOSED SIGNAGE DETAILS FONT FACADE	1:20 @A1	16.10.21
drawing number	drawn	checked
AHA/KKR/ PR /2005N	PD	DA
	revision	
	-	