

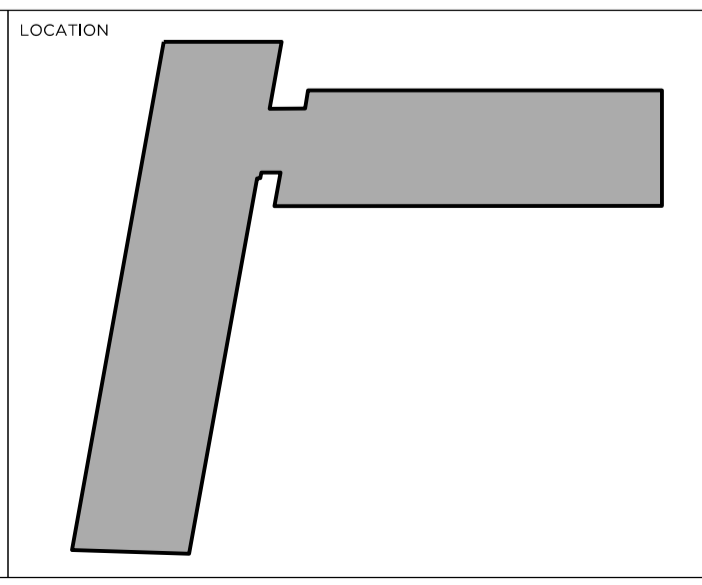
DRAWING NOTES

REVISION	DATE	NOTE
P01	08.03.22	PLANNING

TEAM	CLIENT
STRUCTURAL ENGINEER	Lazari Investments
CIVIL ENGINEER	Guardant Harmon
MEP ENGINEER	GLP
COST CONSULTANT	CN Associates
PROJECT MANAGER	Cushman Wakefield
APPROVED INSPECTOR	Selks
CDM ADVISOR	Shore Engineering
LANDSCAPE DESIGN	Studio CHB
FIRE ENGINEER	Jensen Hughes
LIGHTING DESIGN	Studio 29

GENERAL NOTES

- Do not scale from this drawing.
- All dimensions to be checked on site by the contractor and such dimensions to be his responsibility.
- Report all drawing errors, omissions and discrepancies to the architect.
- This document may be issued in an uncontrolled CAD format to enable others to use it as background information to make alterations and/or additions. In that instance the file will be accompanied by a PDF version. It is for those making such alterations and additions to ensure that they make use of current background information. Gibson Thornley Architects accepts no liability for any such alterations or additions to the background information or arising out of changes to background information which occur prior to alterations of additions being made.



GIBSON THORNLEY
 Gibson Thornley Architects Limited
 No. 4 The Hangar
 Perseverance Works
 25-27 Hackney Road
 London E2 7NX
 www.gibsonthornley.com
 info@gibsonthornley.com
 +44 (0)20 7729 7064

JOB TITLE
MAPLE HOUSE
EXISTING RAMP ENTRANCE ELEVATIONS

DRAWN BY	CHECKED	SCALE	STATUS
CK	BG	1:20@A1 1:40@A3	PLANNING

PROJECT	ZONE	TYPE	CLASSIFICATION	DRAWING NO	REVISION
20024	-	AA	[24]	200	P01