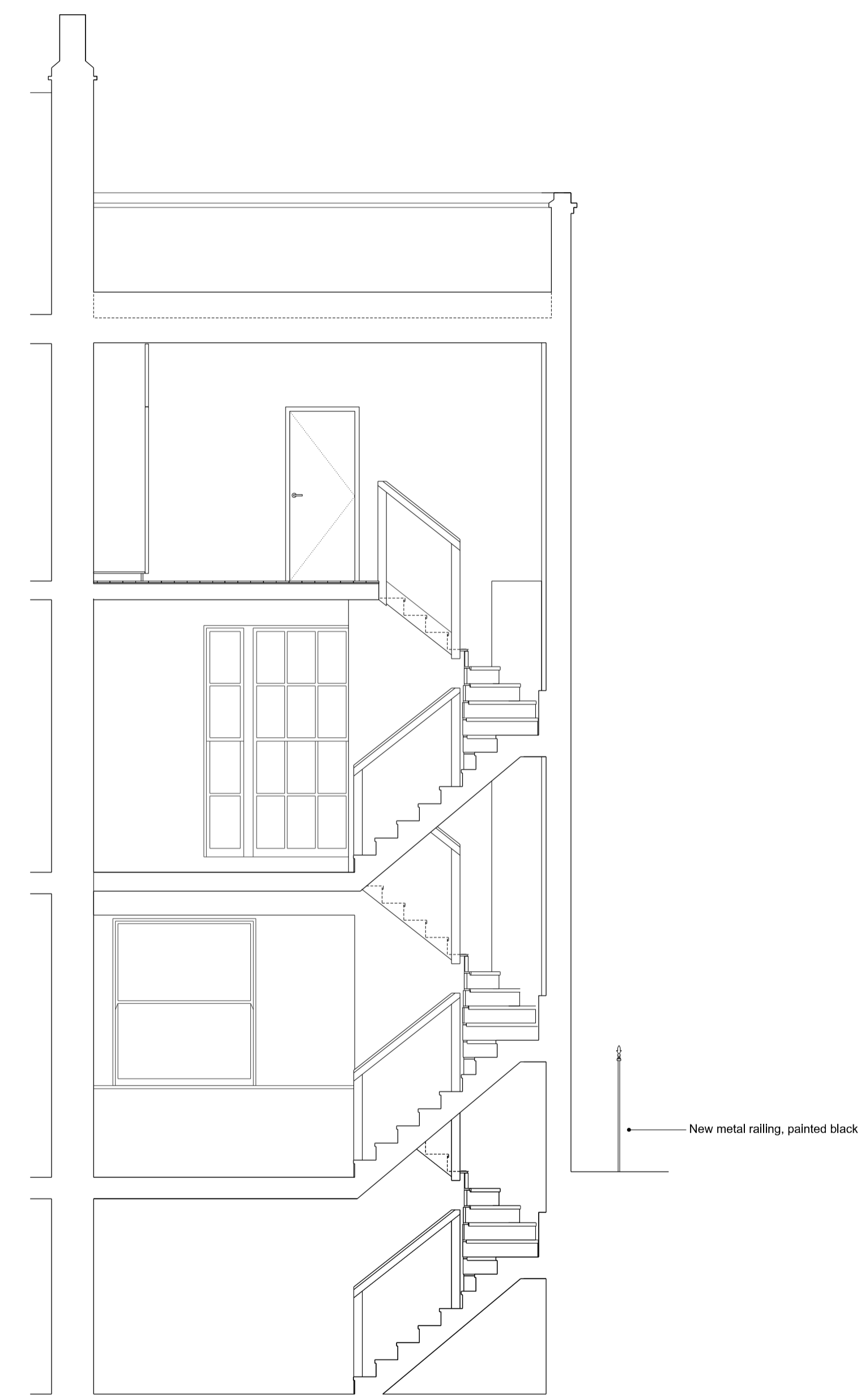
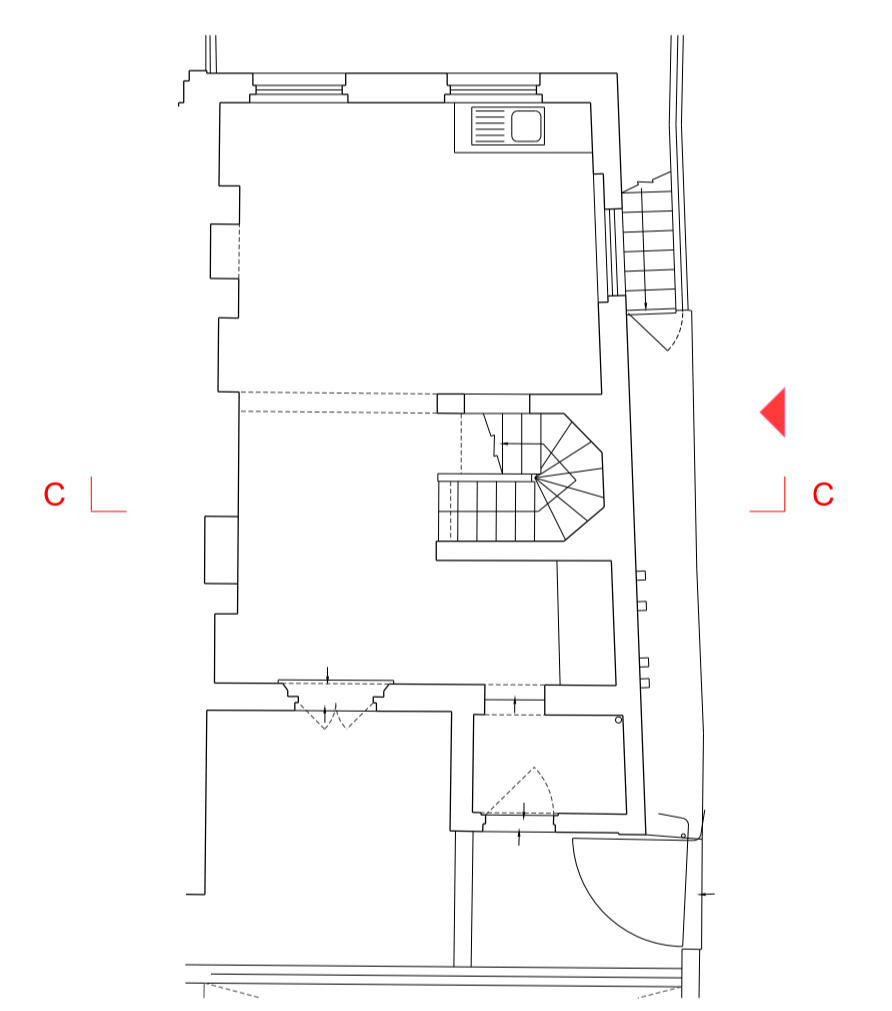


South-West Elevation



Section C-C



Rev. A 23/03/22 Revised Planning Application
 Rev. * 29/09/21 Planning Application

Scale: 0 0.5 1 1.5 2 2.5m

Planning Issue

Proposed
 South-West Elevation + Section CC

159_Princess Road
 Casswell Bank Architects
 3a Trafalgar Mews, London, E9 5JG
 tel 020 8525 1395

Scale Date Drwg
 1:50 @ A1 23.03.22 159_L15_02_A