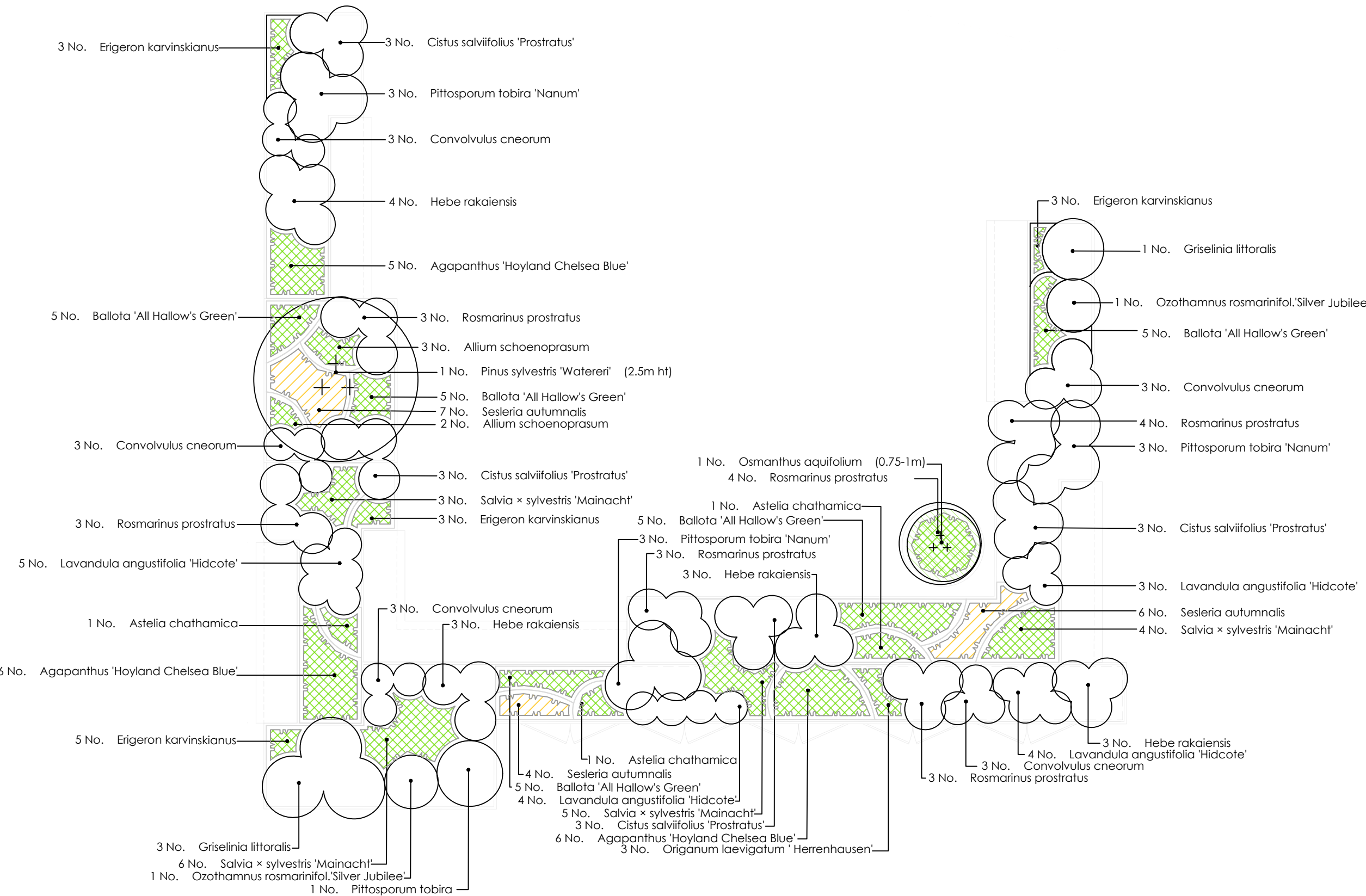


GENERAL NOTES.

This drawing remains the copyright of Andy Sturgeon Garden Design Limited. All dimensions to be checked prior to commencement of any works, and/or preparation of any shop drawings on site. Any dimensional discrepancies and alterations to be referred to the designer.

DO NOT SCALE FROM THIS DRAWING.



Planting Schedule - Roof Terrace (Level 07)

Qty (No.)	Species	Height	Girth	Specification
1 -	Osmanthus aquifolium	1.2-1.5 m		Multi-Stem Umbrella :Clear Stem 0.5-0.75m :3/5 stems :1m spread :Containerised :Rootball to be sized appropriately to pit within Pot Type B (100cm D x 68cm HT)
2 -	Osmanthus aquifolium	1.5-2.0m		Multi-Stem Umbrella :Clear Stem 0.75-1m clear stem :3/5 stems :1.4m spread :Containerised :Maximum rootball depth 0.5m
3 -	Pinus sylvestris 'Watereri'	2.5m		Multi-Stem Umbrella :Clear Stem 1m :3/5 stems :2m spread :Containerised :Maximum rootball depth 0.5m

Qty (No.)	Species	Height	Pot Size	Specification
5 -	Trachelospermum jasminoides	150-200cm	7.5L	Several Shoots :5 brks :Caned*

Qty (No.)	Species	Pot Size	Diameter	Height	Specification
21 -	Cistus salviifolius 'Prostratus'	10L		50cm	Spreading :7/10 brks :Containerised
27 -	Convolvulus cneorum	5L		40-50cm	Bushy :7 brks :Containerised
4 -	Griselinia littoralis	10L		100-125cm	Bushy :7/10 brks :Containerised
19 -	Hebe rakaiensis	10L	40-50cm		Bushy :7/10 brks :Containerised
27 -	Lavandula angustifolia 'Hidcote'	5L		30-40cm	Bushy :5 brks :Containerised
3 -	Ozothamnus rosmarinifol.'Silver Jubilee'	10L		80-100cm	Bushy :7/10 brks :Containerised
2 -	Pittosporum tobira	15L		80-100cm	Bushy :7 brks :Containerised
15 -	Pittosporum tobira 'Nanum'	10L	30-40cm		Bushy :7 brks :Containerised
1 -	Pittosporum tobira 'Nanum'	35L	100-120cm	100-125cm	Bushy :Full Mound to Ground :7/10 brks :Containerised
2 -	Rosmarinus officinalis	10L	30-40cm	60-80cm	Spreading :5/7 brks :Containerised
32 -	Rosmarinus prostratus	5L	30-40cm		Spreading :5/7 brks :Containerised

Qty (No.)	Species	Pot Size	Specification
31 -	Agapanthus 'Hoyland Chelsea Blue'	7.5L	Full Pot
20 -	Allium schoenoprasum	2L	Full Pot
6 -	Astelia chathamica	5L	Full Pot
1 -	Astelia chathamica	2L	Full Pot
35 -	Ballota 'All Hallow's Green'	3L	Full Pot
5 -	Erigeron karvinskianus	1L	Full Pot
20 -	Erigeron karvinskianus	2L	Full Pot
3 -	Origanum laevigatum 'Herrenhausen'	2L	Full Pot
6 -	Salvia officinalis 'Purpurascens'	3L	Full Pot
37 -	Salvia x sylvestris 'Mainacht'	2L	Full Pot

Qty (No.)	Species	Bulb Size	Specification
20 -	Allium atropurpureum	Top Size	Planted amongst Sesleria autumnalis
25 -	Tulipa 'Spring Green'	Top Size	Planted amongst Salvia x sylvestris 'Mainacht'

Qty (No.)	Species	Pot Size	Specification
28 -	Sesleria autumnalis	3L	Full Pot

* Frame carefully removed on site. Secure stems to support framework on wall, taking care not to damage stems.

** Bulbs to be planted in groups of 3-5

C02 03.02.22 Design Update: Planning condition discharge
 C01 26.10.21 Stage 4: Discharge of Planning Conditions
 Iss Date Issue notes



7 Marlborough Place, Brighton BN1 1UB
 Tel: 01273 672575 info@andysturgeon.com www.andysturgeon.com

project no. drawing no. issue
619 P_07_300 C02
 client DORRINGTON
 project Hatton Garden
 drawing Roof Terrace (Level 07)
 Planting Plan
 scale 1:50@A3