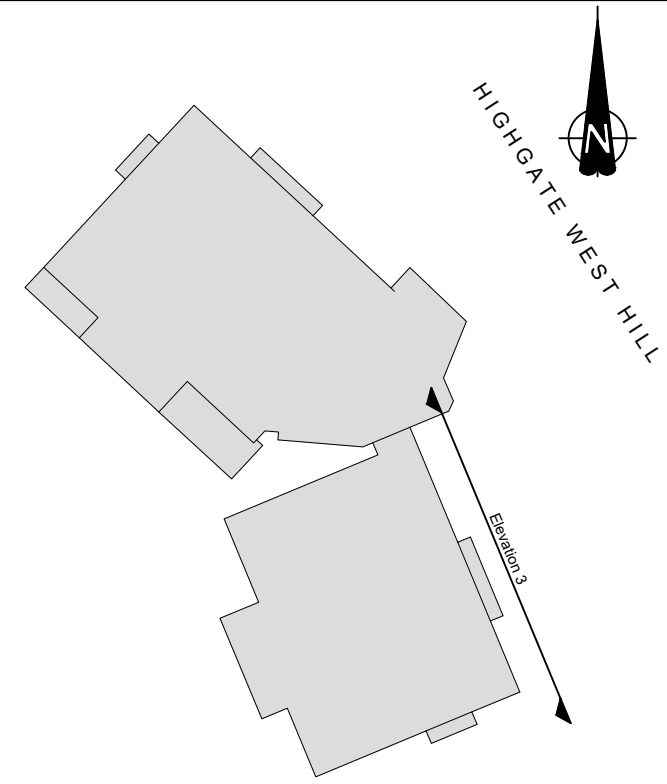


Datum 92.00m

ELEVATION 3 NORTH EAST FACING ELEVATION OF THE SOUTHERN BLOCK



KEY PLAN
SCALE 1:500

KEY

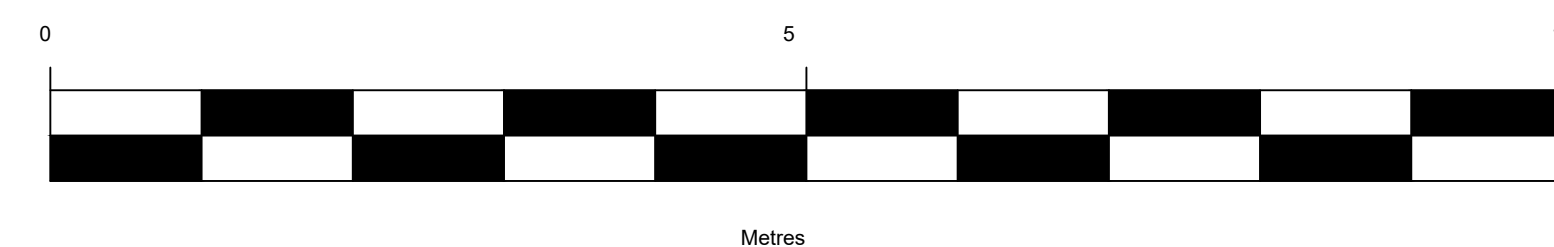
EXTENT OF NEW EXTERNAL GAS PIPEWORK




PLATE 1: PROPOSED GAS PIPEWORK CONTINUES THROUGH RECESSED AREA BETWEEN NORTHERN AND SOUTHERN BLOCKS OF FLATS. FOR REFERENCE, SEE PLATE 1 ABOVE.

PROPOSED SUBTERRANEAN GAS PIPE
WILL EMERGE ABOVE GROUND

PROPOSED SUBTERRANEAN GAS PIPE
WILL EMERGE ABOVE GROUND



P0	PRELIMINARY ISSUE				25-01-22	DR	
REVISION	DETAILS				DATE	ISSUED	BY
CLIENT							
CADENT GAS LIMITED							
PROJECT							
1-8 HILL COURT							
DRAWING TITLE							
PROPOSED NORTH EAST FACING ELEVATION OF THE SOUTHERN BLOCK							
DRG No. CA12487-011				REV		P0	
DRG SIZE A1		SCALE 1:50		DATE		10-03-22	
DRAWN BY LK		CHECKED BY SJ		APPROVED BY		CB	
<div><div><div><div>wardell</div><div>armstrong</div></div></div><div><div><div><div><input checked="" type="checkbox"/> STOKES ON TRENT TEL 01742 276700 WWW.WARDELL-ARMSTRONG.COM</div></div><div><div><input type="checkbox"/> BIRMINGHAM</div><div><input type="checkbox"/> BOLTON</div><div><input type="checkbox"/> CARDIFF</div><div><input type="checkbox"/> CHESHIRE</div><div><input type="checkbox"/> EDINBURGH</div></div><div><div><input type="checkbox"/> GLASGOW</div><div><input type="checkbox"/> LONDON</div><div><input type="checkbox"/> MANCHESTER</div><div><input type="checkbox"/> NEWCASTLE UPON TYNE</div><div><input type="checkbox"/> SHEFFIELD</div></div></div></div></div>							