

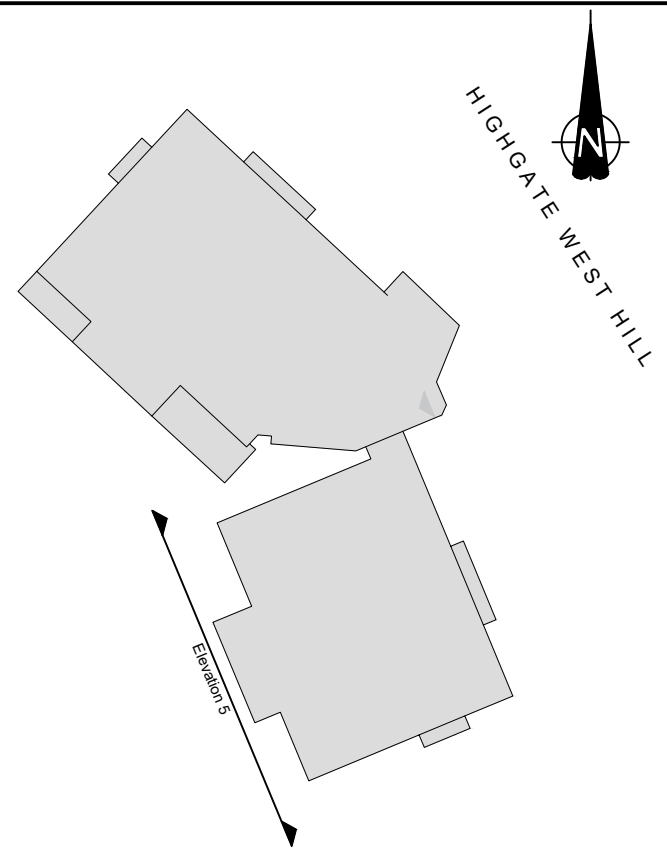


Datum 92.00m


Ground Level

Elevation 5

SOUTH WEST FACING ELEVATION
OF THE SOUTHERN BLOCK



KEY PLAN
SCALE 1:500

P0	PRELIMINARY ISSUE			25-01-22	DR	
REVISION	DETAILS			DATE	ISSUED	BY/APP'D
CLIENT						
CADENT GAS LIMITED						
PROJECT						
1-8 HILL COURT						
DRAWING TITLE						
EXISTING SOUTH WEST FACING ELEVATION OF THE SOUTHERN BLOCK						
DRG No. CA12487-008				REV P0		
DRG SIZE A1		SCALE 1:50		DATE 10-03-22		
DRAWN BY LK		CHECKED BY SJ		APPROVED BY CB		
<div><div></div><div><div>STOKE ON TRENT TEL 01742 276700 WWW.WARDELL-ARMSTRONG.COM</div><div><div><div><input type="checkbox"/> BIRMINGHAM</div><div><input type="checkbox"/> BOLTON</div><div><input type="checkbox"/> CARDIFF</div><div><input type="checkbox"/> CHALWORTH</div><div><input type="checkbox"/> EDINBURGH</div></div><div><div><input type="checkbox"/> GLASGOW</div><div><input type="checkbox"/> LONDON</div><div><input type="checkbox"/> MANCHESTER</div><div><input type="checkbox"/> NEWCASTLE UPON TYNE</div><div><input type="checkbox"/> SHEFFIELD</div></div></div></div></div>						