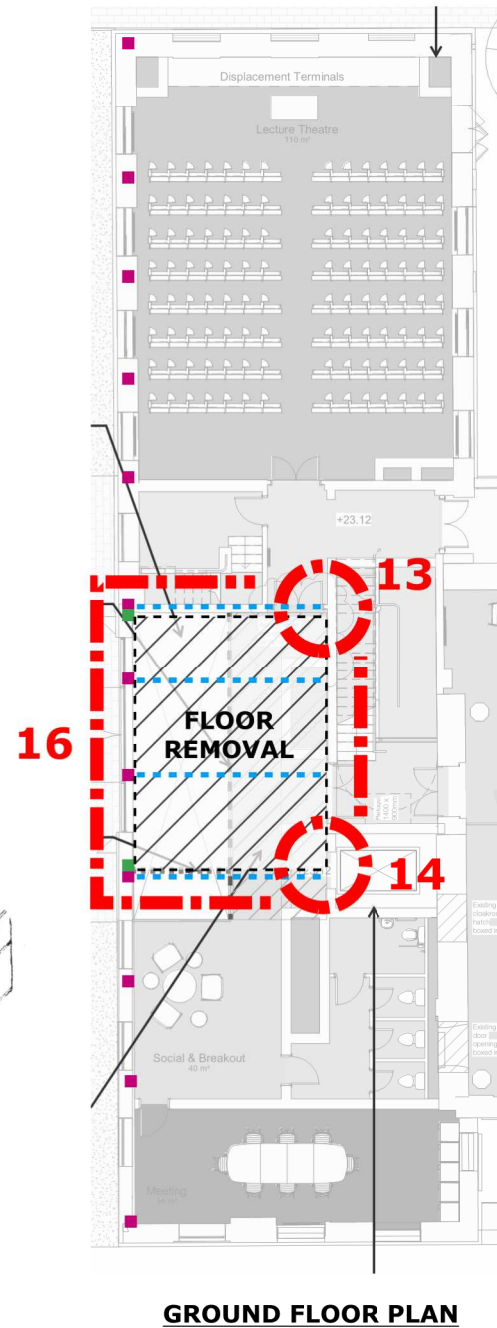
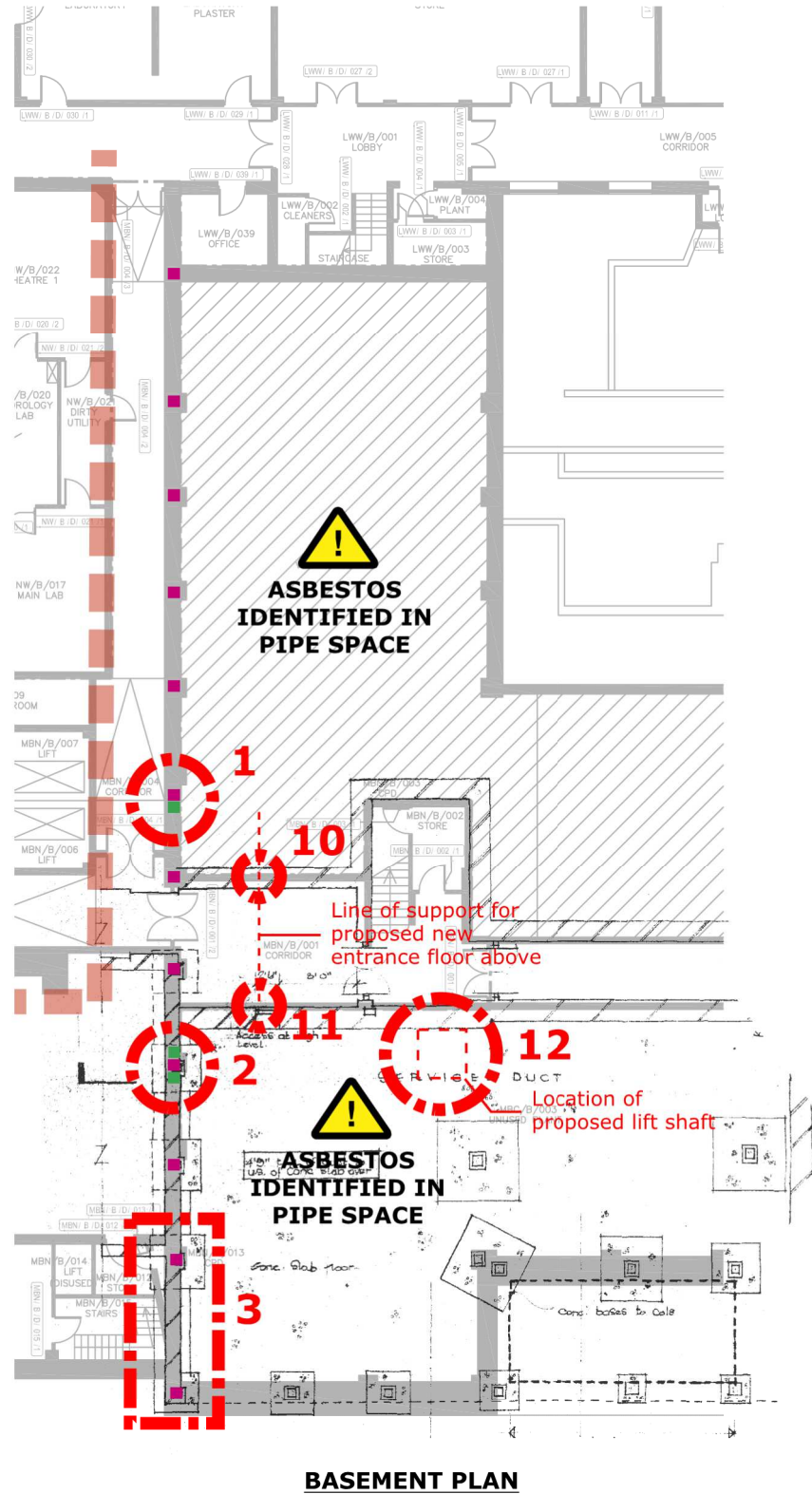


CE-000409 STRUCTURAL INVESTIGATIONS SCOPE

PAGE 1 OF 5: EDC NORTH FACADE



EDC NORTH ELEVATION

SCHEDULE OF INVESTIGATIONS: PAGE 1 OF 5			
REF.	ACTION	OUTCOME	LOCATION
A.	Trial pits + review of as-built	Confirm foundation plan dimensions and prove depth. Include as-built information for any P1 underpinning	1, 2, 3
B.	Local break-out. Allow approx. 300x300mm or larger as required	Confirm column dimensions, condition, and connection details with any interfacing members (e.g. foundations, steelwork, floor structures, support of masonry facade). Include full dimensions of any interfacing members and details of build-ups etc.	1, 2, 3, 4, 5, 6, 7, 8, 9
C.	Local break-out as above.	Determine wall build-up, vertical support condition and interface with steelwork and floor structures.	4, 5, 6, 7, 8, 9
D.	Local break-out as above, at soffit	Confirm floor build-ups and assumed span directions for existing EDC structure and allow more refined load take-down.	Allow 2no. per level on EDC North Wing. Location t.b.a. on site for minimum impact on historic fabric
E.	Measured survey	Full measured survey of basement 'pipe spaces' to inform assessment of existing walls to retain earth up to ground floor level. Note presence of ACMs.	North east and north west 'pipe spaces' at basement level.
F.	Break-out and trial pit	Determine build-up of floor of 'pipe space' and footings to existing walls. Record relationship between pipe space floor, walls and foundations and respective levels.	10, 11, 12
G.	Remove finishes/fit out	Provide access and temporarily remove ceiling tiles to allow inspection of floor structure above	16 + ceilings at LG floor to examine GF structure.
H.	Local break-out on u/s of slab at beam locations	Determine connection between floor structure, beams and wall. Record member sizes and build-ups.	13, 14

KEY:

- | / ■ Likely existing steel column location
- | / ■ New steelwork required for opening
- Likely existing steel beam location
- ¹⁰ Location reference for proposed investigation

RAMBOLL

tel 01223 321 195 cambridge@ramboll.co.uk
www.ramboll.co.uk

IoN /DRI

Project N° 1620004664

CE-000409 STRUCTURAL INVESTIGATIONS SCOPE. EDC NORTH FACADE.

PAGE 1 OF 5

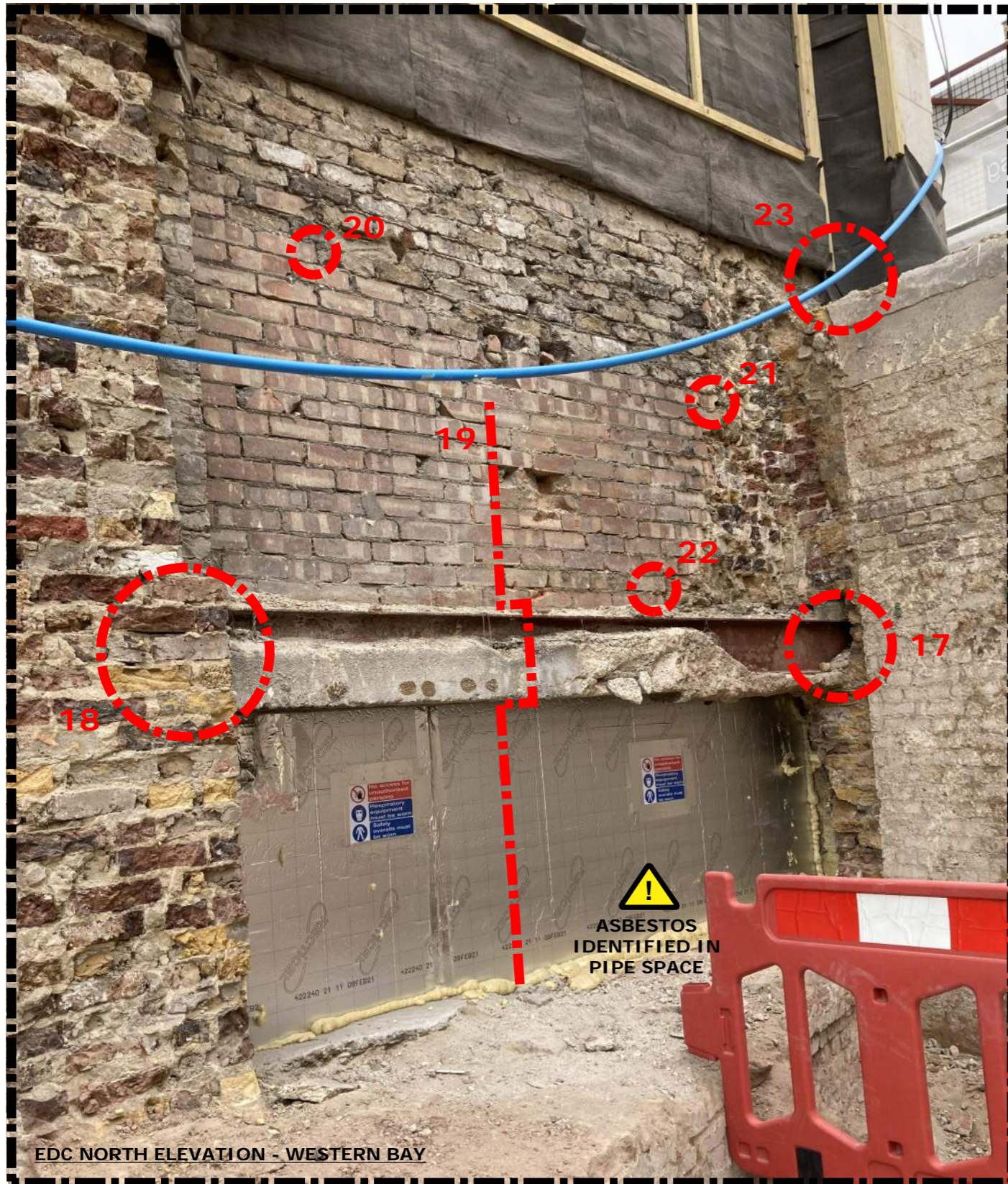
Sketch N° BEMP-RAM-SW-ZZ-SK-S-00-0090

Scale NTS	Engineer AW	Checked PA
Date 12/10/21	Rev. P03	Suitability N/A

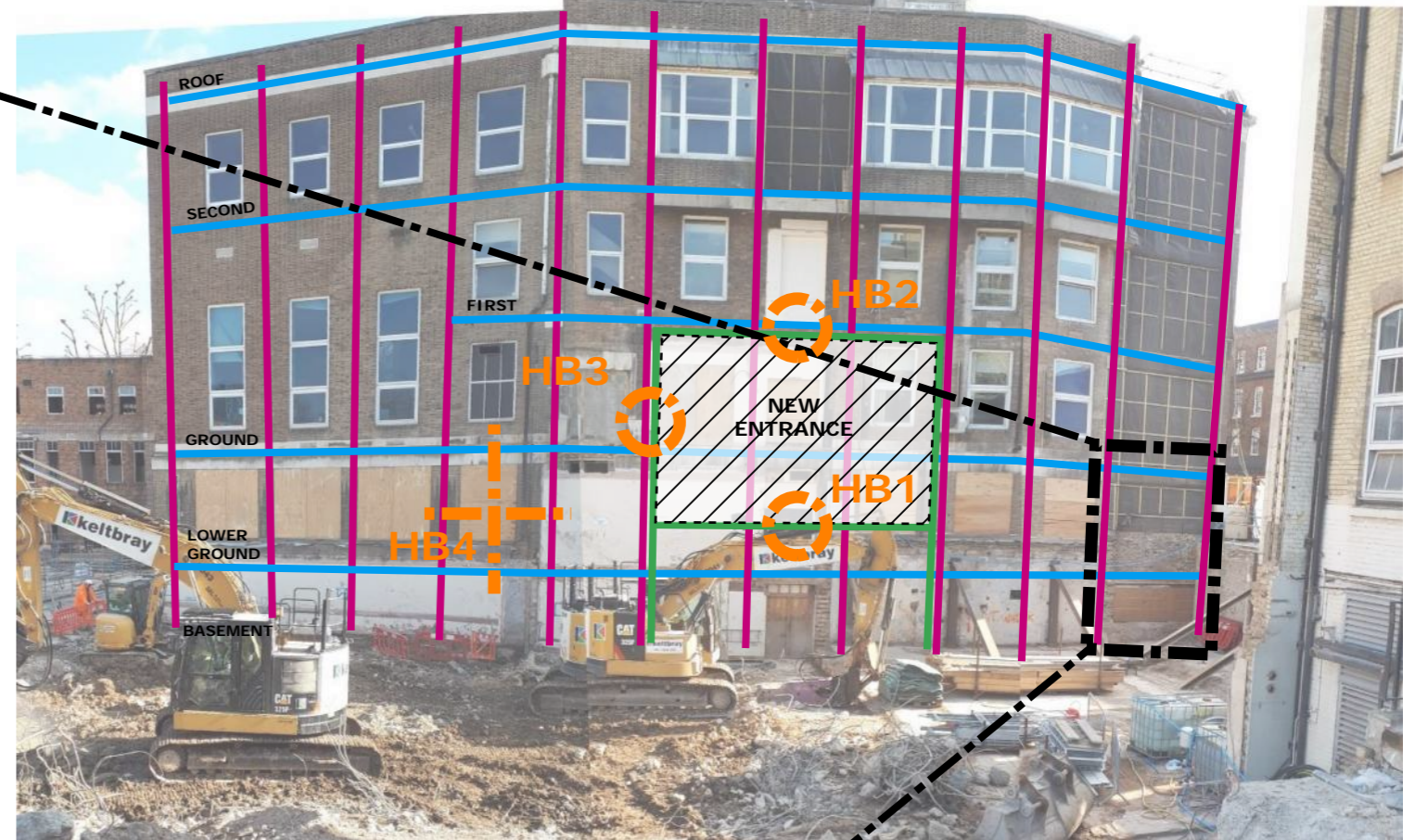
NOTES:

- The investigations listed here are not intended to be an exhaustive list given the maturity of the current design information. Further investigations may be required in future following further architectural, landscaping and design team development on the nature of works to the existing fabric.
- It is assumed that the contractor will negotiate all required approvals prior to commencement of the works.
- High-quality photographs and annotated, dimensioned drawings are to be provided for every investigation.
- Investigations are assumed to be carried out by a competent contractor.
- Investigations are for works to the North and East facades of the EDC only, along with works to the wider site not previously instructed. Refer to BEMP-RAM-P1-XX-QCE-XX-CE02 and CE-000409 for further details.
- All investigations are to be inspected by Ramboll and backfilled/made good upon approval.

Investigation Identifier = Reference + Location (i.e. B.3 or F.11 etc.)



EDC NORTH ELEVATION - WESTERN BAY



EDC NORTH ELEVATION

SCHEDULE OF INVESTIGATIONS (CONTINUED): PAGE 2 OF 5

REF.	ACTION	OUTCOME	LOCATIONS
J.	Local break-out + measured survey	Determine beam bearing condition with masonry. Locate steel column to allow accurate setting out. Record steel member sizes, condition and wall build-ups.	17, 18
K.	Measured survey and levels. Local break-out for beam/floor/masonry interface.	Record accurate dimensions to draw section as indicated by dashed line. Relate setting out of masonry to position of steel beam and level of floor structure. Determine interface between beam and floor and support condition for masonry. Note presence of ACMs in 'pipe space'.	19
L.	Local break-out.	Determine wall build-up and investigate interface between different regions/ages of brickwork.	20, 21, 22
M.	Local break-out.	Determine interface and bonding between different regions of brick/stone and support.	23
HB.A	Local break-out.	Determine wall build-ups and interface with existing steelwork, as applicable. Record details at existing window/door openings.	HB1, HB2, HB3, HB4
HB.B	Drainage survey.	Trace drainage connections to all existing RWPs (e.g. CCTV survey) to inform new services provision.	EDC facades generally

KEY:

- | / ■ Likely existing steel column location
- | / ■ New steelwork required for opening
- / - - - Likely existing steel beam location
- ⊙¹⁰ Location ref. for proposed structural investigation
- ⊙^{HB} Location ref. for proposed architectural investigation

NOTES:

1. The investigations listed here are not intended to be an exhaustive list given the maturity of the current design information. Further investigations may be required in future following further architectural, landscaping and design team development on the nature of works to the existing fabric.
2. It is assumed that the contractor will negotiate all required approvals prior to commencement of the works.
3. High-quality photographs and annotated, dimensioned drawings are to be provided for every investigation.
4. Investigations are assumed to be carried out by a competent contractor.
5. Investigations are for works to the North and East facades of the EDC only, along with works to the wider site not previously instructed. Refer to BEMP-RAM-P1-XX-QCE-XX-CE02 and CE-000409 for further details.
6. All investigations are to be inspected by Ramboll and backfilled/made good upon approval.

RAMBOLL

tel 01223 321 195 cambridge@ramboll.co.uk
www.ramboll.co.uk

IoN /DRI

Project N° 1620004664

CE-000409 STRUCTURAL INVESTIGATIONS SCOPE. EDC NORTH FACADE.

PAGE 2 OF 5

Sketch N° **BEMP-RAM-SW-ZZ-SK-S-00-0090**

Scale NTS	Engineer AW	Checked PA
Date 12/10/21	Rev. P03	Suitability N/A

Investigation Identifier = Reference + Location (i.e. J.17 or L.21 etc.)

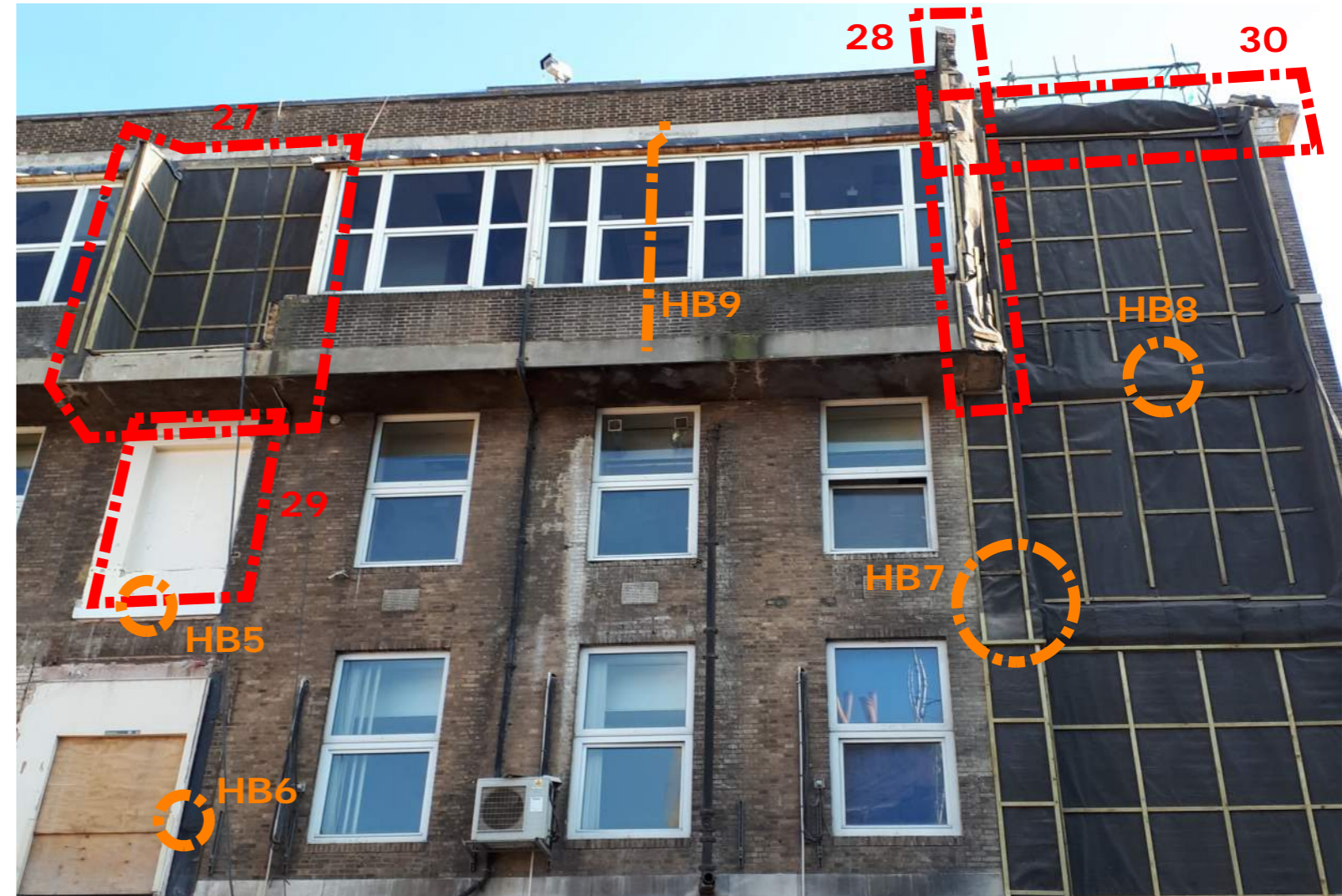


EDC NORTHWEST CORNER ELEVATION

NOTES: As previous pages.

SCHEDULE OF INVESTIGATIONS (CONTINUED):

REF.	ACTION	OUTCOME	LOCATIONS
HB.D	Local break-out	Determine wall build-up and condition to brickwork behind felt and batten region. Include dimensioned interface details at recessed areas. Determine interface between walls, slabs and steelwork.	HB7, HB8



EDC NORTH ELEVATION

SCHEDULE OF INVESTIGATIONS (CONTINUED): PAGE 3 OF 5

REF.	ACTION	OUTCOME	LOCATIONS
N.	Local break-out	Determine wall build-up and investigate interface between brickwork, decorative stonework and steel frame/support structure.	24, 26, 25/HB10,
P.	Local break-out. Removal of finishes/ceilings	Remove finishes/ceilings and survey balcony structure. Perform local break-outs as required to confirm support structure for cantilever floor, glazing and sloped roof. Determine interface between balcony structure, existing facade and primary steel frame.	27, 28
Q.	Removal of wall finishes/ceilings	Remove wall finishes internally and remove ceiling tiles as required to allow for visual inspection to assess suitability for new window penetration.	29
R.	Local break-out	Determine wall build-up, vertical support condition and interface with steelwork, roof structure, upstand and decorative stonework.	30
HB.C	Local break-out	Determine wall build-ups and interface with any existing structure. Record details at existing window/door openings. Record detail between pitched roof of overhang and main structure including any connection to primary steel frame.	HB5, HB6, HB9

KEY:

- ⊙ 10 Location ref. for proposed structural investigation
- ⊙ HB Location ref. for proposed architectural investigation

RAMBOLL

tel 01223 321 195 cambridge@ramboll.co.uk
www.ramboll.co.uk

IoN /DRI

Project N° 1620004664

CE-000409 STRUCTURAL INVESTIGATIONS SCOPE. EDC NORTH FACADE.

PAGE 3 OF 5

Sketch N° BEMP-RAM-SW-ZZ-SK-S-00-0090

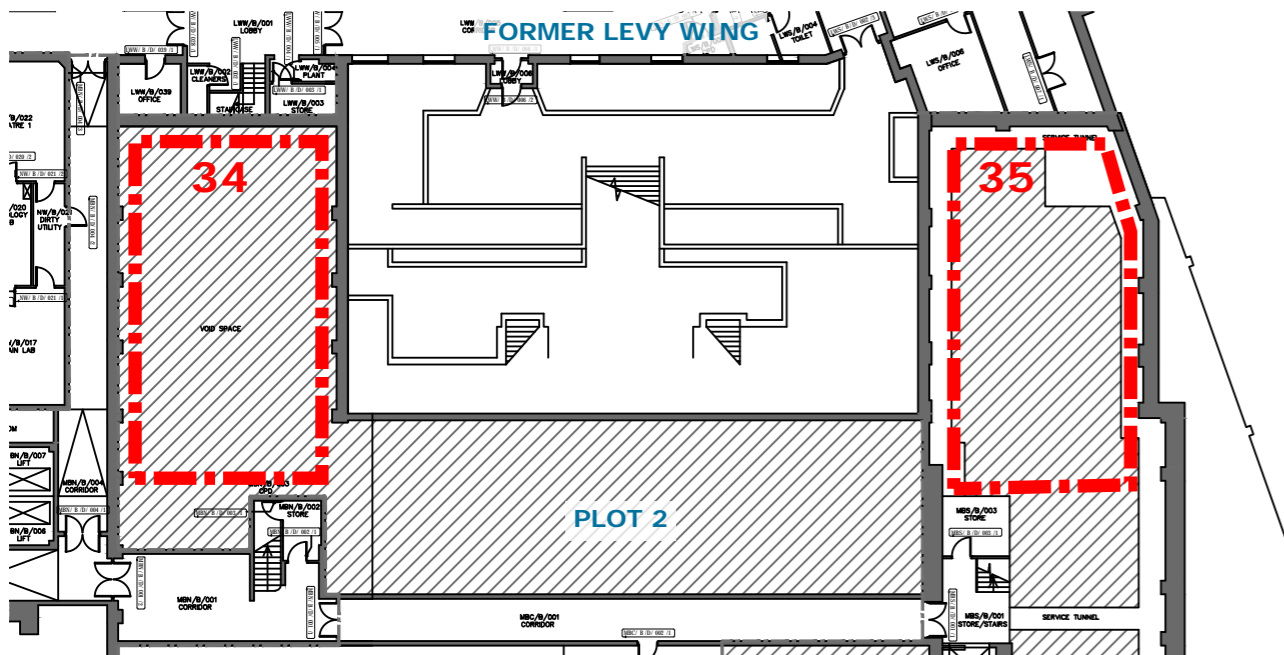
Scale NTS	Engineer AW	Checked PA
Date 12/10/21	Rev. P03	Suitability N/A

Investigation Identifier = Reference + Location (i.e. J.17 or L.21 etc.)



EDC EAST ELEVATION

NOTE: FURTHER INVESTIGATIONS MAY BE REQUIRED TO THE EDC COURTYARD REGION ONCE LANDSCAPE PROPOSALS ARE DEVELOPED TO A DETAILED STAGE




ARCHIVE B1 PLAN

NOTES: As previous pages

SCHEDULE OF INVESTIGATIONS (CONTINUED):			
REF.	ACTION	OUTCOME	LOCATIONS
HB.E	Local removal of finishes and break-out	Local removal of felt and batten and/or finishes as required to allow visual inspection of facade brickwork. Determine wall build-up and interface between walls, slabs, steelwork and decorative stonework.	HB11, HB12, HB13, HB14, HB15, HB16, HB17, HB18
U.	Local break-out	Determine interface between facades, primary steel frame and inset brickwork to advise on making good.	31,32
V.	Local break-out at stubs	Investigate relationship between beam stubs and EDC structure to inform future detailing and making good of facade.	33 + allowance for similar on N. Wing, if required
W.	Measured survey with levels + local break-out	Survey pipe spaces/service tunnels to determine full dimensions and levels and perform local break-out to determine floor construction to pipe space. <u>Note possible presence of ACMs.</u>	34, 35

Investigation Identifier = Reference + Location (i.e. J.17 or L.21 etc.)

KEY:

 Location reference for proposed investigation

RAMBOLL

tel 01223 321 195 cambridge@ramboll.co.uk
www.ramboll.co.uk

IoN /DRI

Project N° 1620004664

CE-000409 STRUCTURAL INVESTIGATIONS SCOPE. EDC EAST FACADE.

Sketch N° BEMP-RAM-SW-ZZ-SK-S-00-0090

Scale NTS Engineer AW Checked PA

Date 12/10/21 Rev. P03 Suitability N/A