

# APPLICATION FOR DISCHARGE OF PLANNING CONDITION 6

Document Ref: 7021-Condition 6-External Materials

The Charlie Ratchford Centre, Belmont Street,  
London NW1 8HF

Planning Application Ref: 2020/5063/P

Condition 6 (Extracted from Decision Notice)  
Prior to completion of superstructure, detailed drawings, or samples of materials as appropriate, in respect of the following, shall be submitted to and approved in writing by the local planning authority:

- a) Details including sections at 1:20 of all windows (including jambs, head and cill), ventilation grilles, external doors, gates and canopies.
- b) Plan, elevation and section drawings, of all ground floor facades at a scale of 1:20.
- c) Manufacturer's specification details of all facing materials (to be submitted to the Local Planning Authority), samples (to be provided on site or at the architects' office), and hand sample panels of those materials (to be provided on site).
- d) Details of all plant equipment and any necessary screening.
- e) Details of all bollards (including moveable ones and their means of control / management), gates, fences or other means of enclosure which form part of the public realm.

The relevant part of the works shall be carried out in accordance with the details thus approved and all approved samples shall be retained on site during the course of the works.

**Material 1 – Stock brick**  
Application/Location: All elevations  
Product: Lindebloem  
Supplier: Taylor Maxwell  
t: 0203 794 9377  
w: [www.vandersanden.com/en-uk/products-and-solutions/lindebloem](http://www.vandersanden.com/en-uk/products-and-solutions/lindebloem)  
[See attached Image 1]

**Material 2 – Paving Slabs**  
Application/Location: Communal Walkways  
Product: Saxon Textured - Charcoal  
Supplier: Marshalls  
t: 0370 411 3344  
w: <https://www.marshalls.co.uk/commercial/product/saxon-paving>  
[See attached Image 2]

**Material 3 – Brilliant White Glazed Brick**  
Application/Location: Link building & decorative sections of elevations  
Product: Brilliant White Glazed  
Supplier: Taylor Maxwell  
t: 0203 794 9377  
[See attached Image 3]

**Material 4 – Bergundy Glazed Brick**  
Application/Location: Link building & decorative sections of elevations  
Product: Bergundy Glazed  
Supplier: Taylor Maxwell  
t: 0203 794 9377  
[See attached Image 4]

**Material 5 – White brick (Smooth)**  
Application/Location: Balcony  
Product: Ibiza Smooth White  
Product Ref: CBL-MAL-ISW  
Supplier: Taylor Maxwell  
t: 0203 794 9377  
[See attached Image 5]

**Material 6 – Porcelain Paving**  
Application/Location: Private Balconies  
Product: Quadro Porcelain - Argento  
Supplier: Ryno  
t: 0203 9673500  
w: [www.rynogroup.co.uk/ryno-terrace/quadro-porcelain/](http://www.rynogroup.co.uk/ryno-terrace/quadro-porcelain/)  
[See attached Image 6]

**Material 7 – Sedum/Green Roof**  
Application/Location: Green Roofs  
[See attached Image 7]

**Material 8 – Powder Coated Metalwork**  
Application/Location: All external metalwork  
[See attached Image 8]



Image 1 - Stock brick



Image 2 - Paving to Communal Walkways



Image 3 - Glazed White Brickwork (Feature Areas/Banding etc)

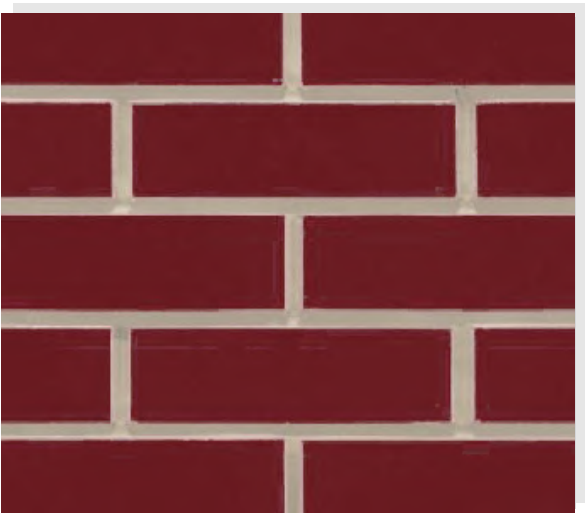


Image 4 - Glazed Bergundy Brickwork (Feature Areas/Banding etc)



Image 5 - White Smooth Brick

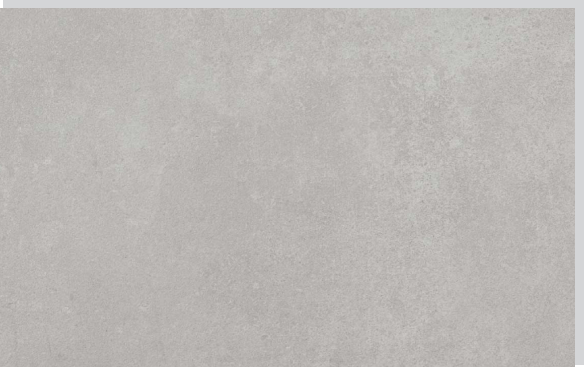


Image 6 - Porcelain Paving to Private Balconies



Image 7 - Sedum/Green Roof System

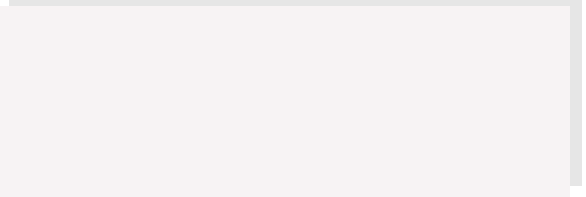
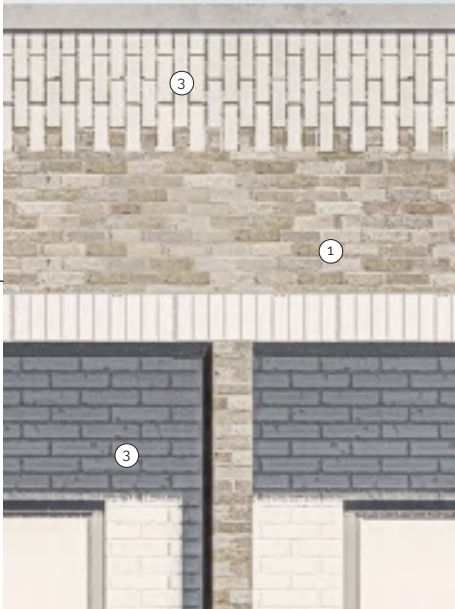
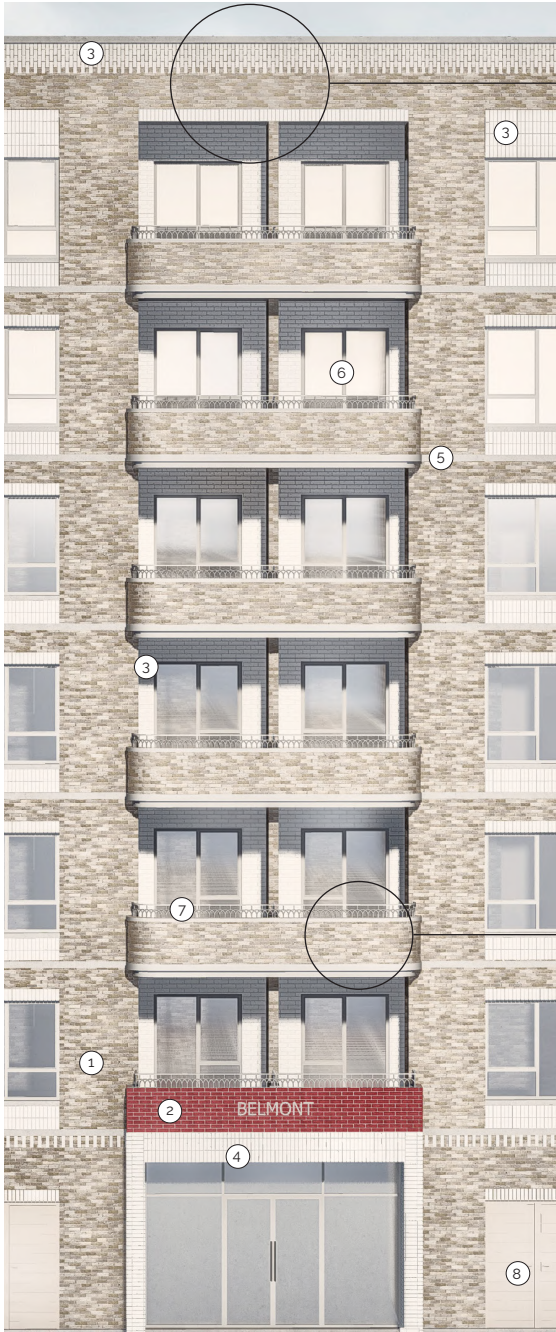


Image 8 - Powder Coated metalwork (white - RAL 9010)

**Note:**  
Physical samples of relevant materials to be issued by courier to Camden Council upon request of Case officer.

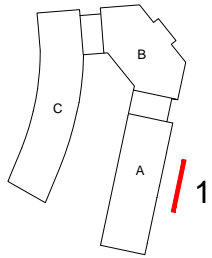




Vertical running bond parapet detail (White brick).



Balcony railing with feature arched profile.



Rev	Date	Drawn	Description
A	08.09.20	PSA	Planning Issue

Notes:  
Do not scale from drawings unless by agreement with HTA. Use figured dimensions only. Check all dimensions on site prior to commencing the works. Drawing to be read in conjunction with other relevant consultant information.

This drawing is the copyright of HTA Design LLP and must not be copied or reproduced in part, or in whole, without the express permission of HTA Design LLP. Drawing to be read in conjunction with specification.

- Materials Key:
- 1. Brick type 1 - Stretcher bond (Buff brick)
  - 2. Brick type 2 - (Glazed red brick)
  - 3. Brick type 3 - (White brick)
  - 4. Brick type 4 - (Glazed white brick)
  - 5. Stone banding - (Precast concrete with stone aggregate, with 30mm projection)
  - 6. Window type 1 - (Aluminium window PPC coated frame with minimum 150mm reveal depth)
  - 7. Balcony Railings with feature Arched profile - (Architectural metal works, white)
  - 8. Lowered doors to plant/bin stores - (Steel, white)

Proposed Detail Elevation 1

Vistry Partnerships  
Belmont Street Site, Camden  
client / project

PLANNING  
status

CHA-HTA-A-0230

drawing number  
Not to Scale  
Scale @ A1

GAL-CHA  
project number

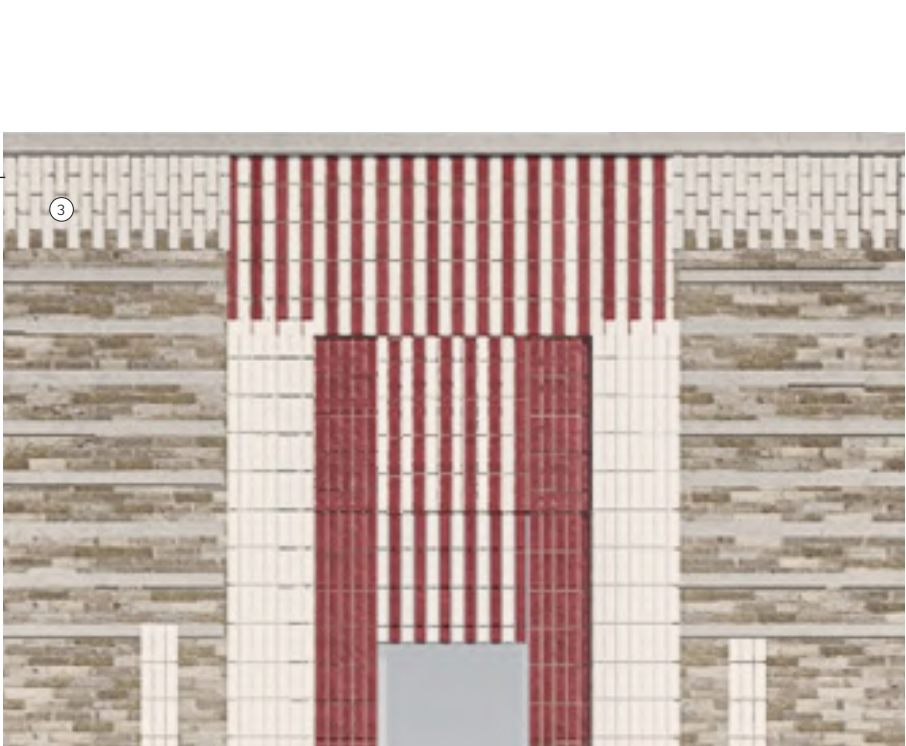
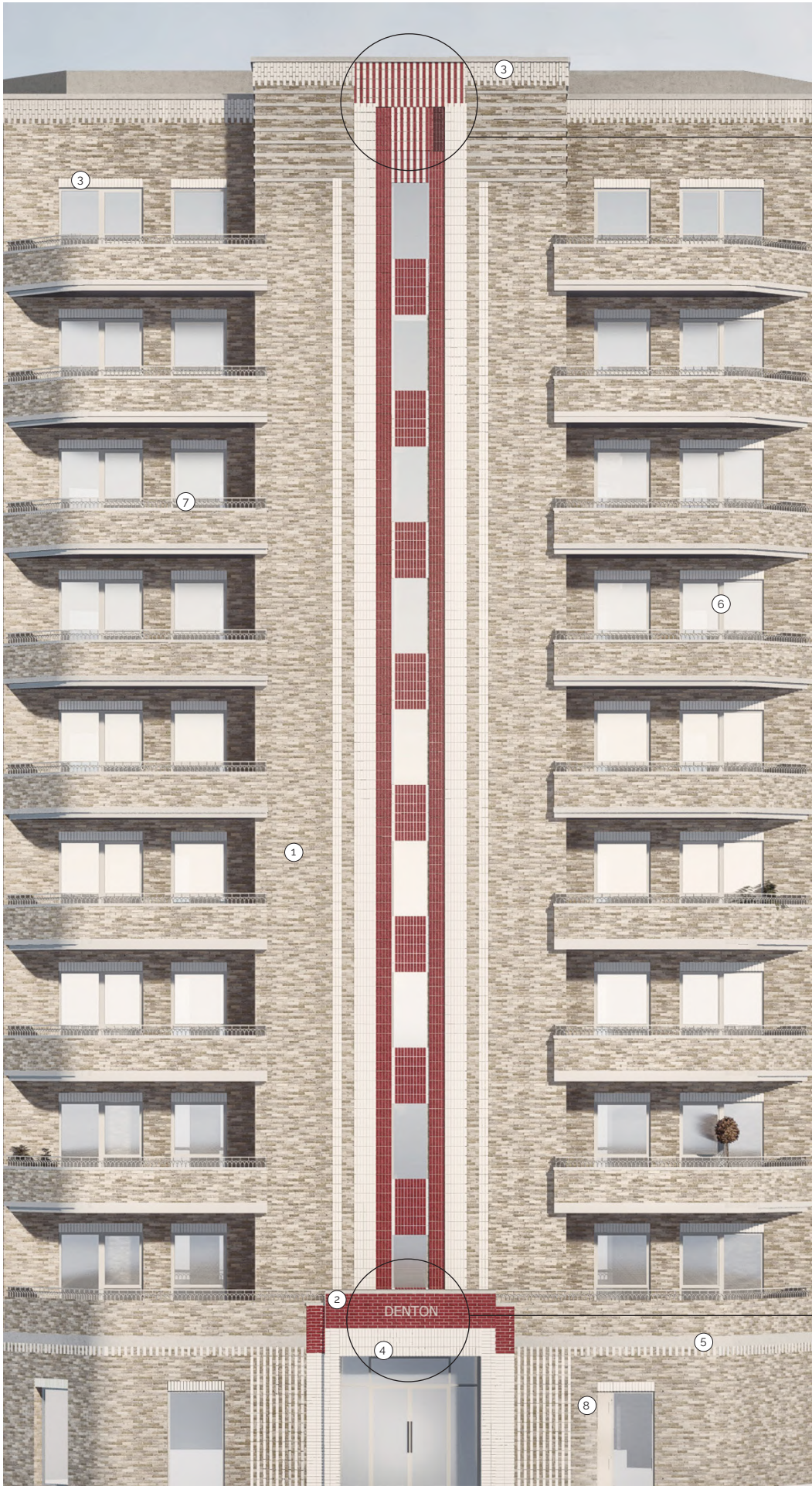
A  
revision

PSA  
originated by

HTA Design LLP  
www.hta.co.uk  
London | Edinburgh | Manchester | Bristol



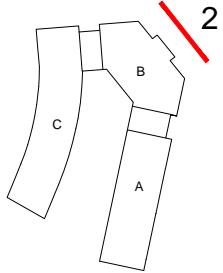




Vertical stack bond crown detail in red and white brick, celebrating entrance block and Vertical running bond parapet detail in White brick



Balcony railing with feature arched profile.



Rev	Date	Drawn	Description
A	23.07.20	PSA	Planning Issue
A	08.09.20	PSA	Planning Issue

Notes:  
Do not scale from drawings unless by agreement with HTA. Use figured dimensions only. Check all dimensions on site prior to commencing the works. Drawing to be read in conjunction with other relevant consultant information.

This drawing is the copyright of HTA Design LLP and must not be copied or reproduced in part, or in whole, without the express permission of HTA Design LLP. Drawing to be read in conjunction with specification.

- Materials Key:
- Brick type 1 - Stretcher bond (Buff brick)
  - Brick type 2 - (Glazed red brick)
  - Brick type 3 - (White brick)
  - Brick type 4 - (Glazed white brick)
  - Stone Banding - (Precast concrete with stone aggregate, with 30mm projection)
  - Window type 1 - (Aluminium window PPC coated frame with minimum 150mm reveal depth)
  - Balcony Railings with feature Arched profile - (Architectural metal works, white)
  - Louvered doors to plant/Bin stores - (Steel,white)

Proposed Detail Elevation 2  
drawing title  
Vistry Partnerships  
Belmont Street Site, Camden  
Client / project

CHA-HTA-A-0231  
drawing number

Not to Scale  
Scale @ A1

GAL-CHA  
project number

PSA  
originated by

PLANNING  
status

HTA Design LLP  
www.hta.co.uk  
London | Edinburgh | Manchester | Bristol



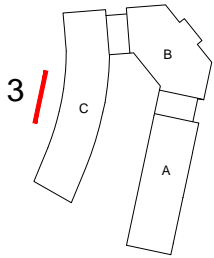




Brick parapet detail & Vertical stack bond Window Detail



Aluminium window PPC coated frame with minimum 150mm reveal



Rev	Date	Drawn	Description
A	23.07.20	PSA	Planning Issue
	08.09.20	PSA	Planning Issue

Notes:  
Do not scale from drawings unless by agreement with HTA. Use figured dimensions only. Check all dimensions on site prior to commencing the works. Drawing to be read in conjunction with other relevant consultant information.

This drawing is the copyright of HTA Design LLP and must not be copied or reproduced in part, or in whole, without the express permission of HTA Design LLP. Drawing to be read in conjunction with specification.

Materials Key:

- Brick type 1 - Stretcher bond (Buff brick)
- Brick type 2 - (Glazed red brick)
- Brick type 3 - (White brick)
- Brick type 4 - (Glazed white brick)
- Stone Banding - (Precast concrete with stone aggregate, with 30mm projection)
- Window type 1 - (Aluminium window PPC coated frame with minimum 150mm reveal depth)
- Balcony Railings with feature Arched profile - (Architectural metal works, white)

Proposed Detail Elevation 3

Vistry Partnerships  
Belmont Street Site, Camden  
client / project

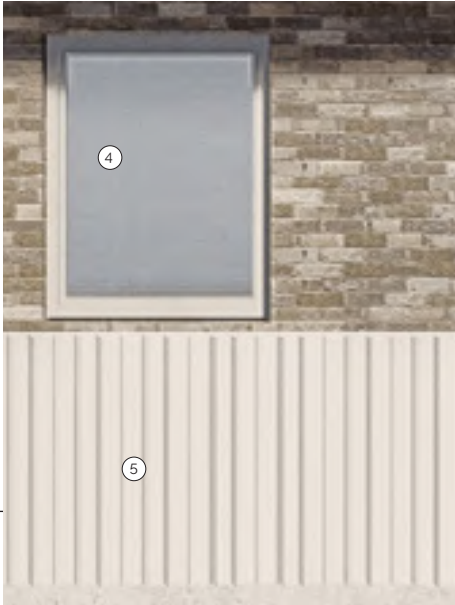
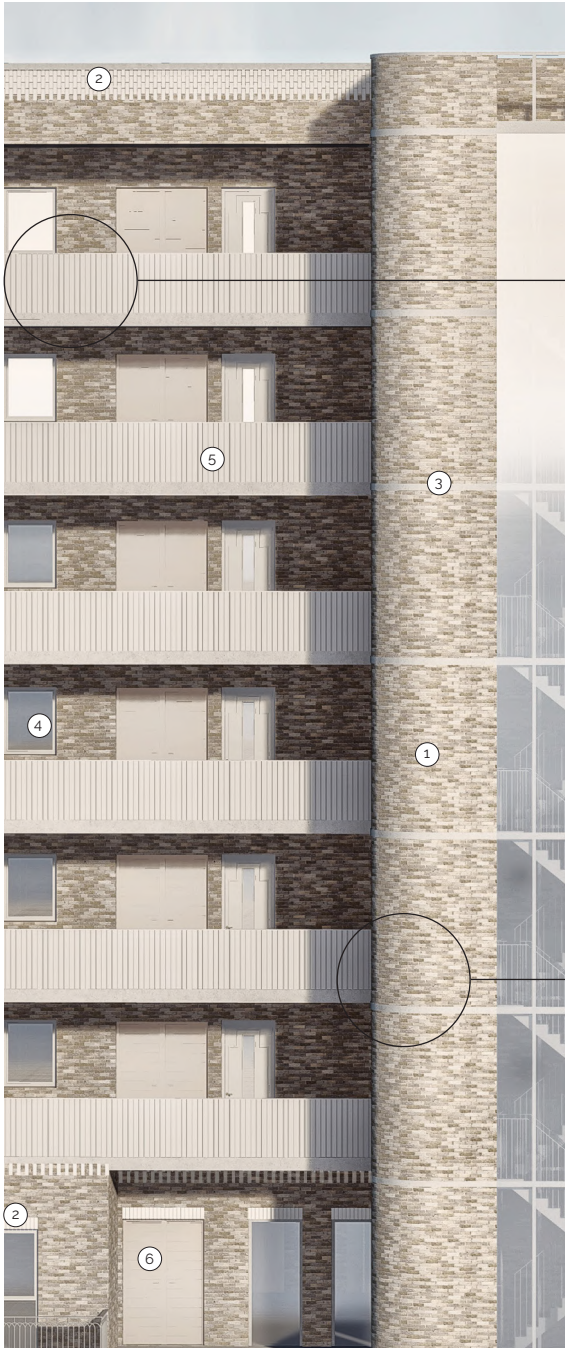
PLANNING  
status

CHA-HTA-A-0232

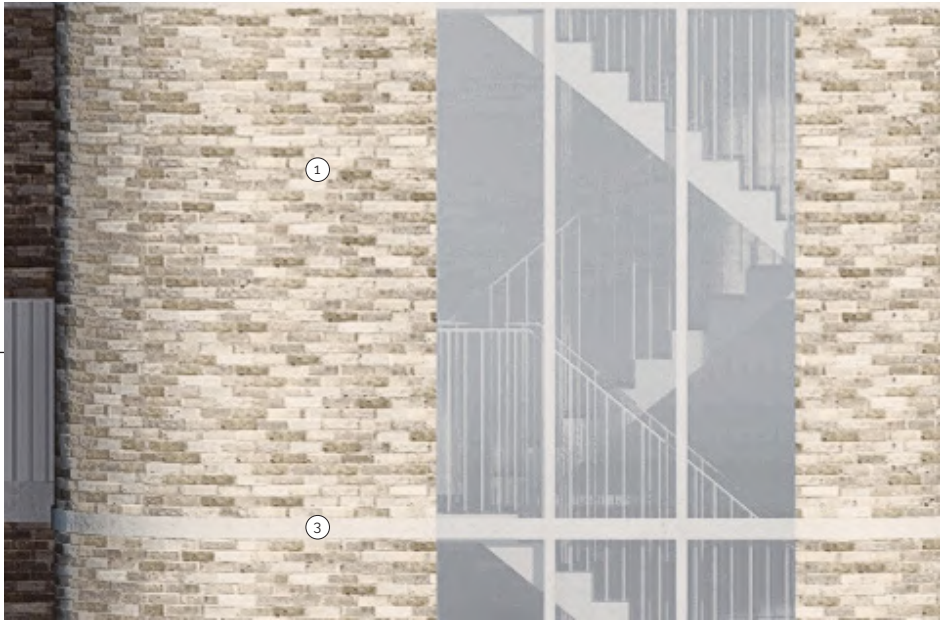
Not to Scale  
Scale @ A1  
GAL-CHA  
project number  
PSA  
originated by

HTA Design LLP  
www.hta.co.uk  
London | Edinburgh | Manchester | Bristol

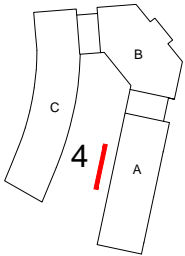




1100mm Metal panel with vertical railing



Courtyard staircore, curved profile



Rev	Date	Drawn	Description
A	23.07.20	PSA	Planning Issue
	08.09.20	PSA	Planning Issue

Notes:  
Do not scale from drawings unless by agreement with HTA. Use figured dimensions only. Check all dimensions on site prior to commencing the works. Drawing to be read in conjunction with other relevant consultant information.

This drawing is the copyright of HTA Design LLP and must not be copied or reproduced in part, or in whole, without the express permission of HTA Design LLP. Drawing to be read in conjunction with specification.

- Materials Key:
- ① Brick type 1 - Stretcher bond (Buff brick)
  - ② Brick type 3 - (White brick)
  - ③ Stone banding - (Prest concrete with stone aggregate, with 30mm projection)
  - ④ Window type 1 - (Aluminium window PPC coated frame with minimum 150mm reveal depth)
  - ⑤ Courtyard deck/stairs - Metal panel, white
  - ⑥ Louvered doors to plant/bin stores - (Steel, white)

Proposed Detail Elevation 4

Vistry Partnerships  
Belmont Street Site, Camden  
client / project

PLANNING  
status

CHA-HTA-A-0233

drawing number  
Not to Scale  
Scale @ A1

GAL-CHA  
project number

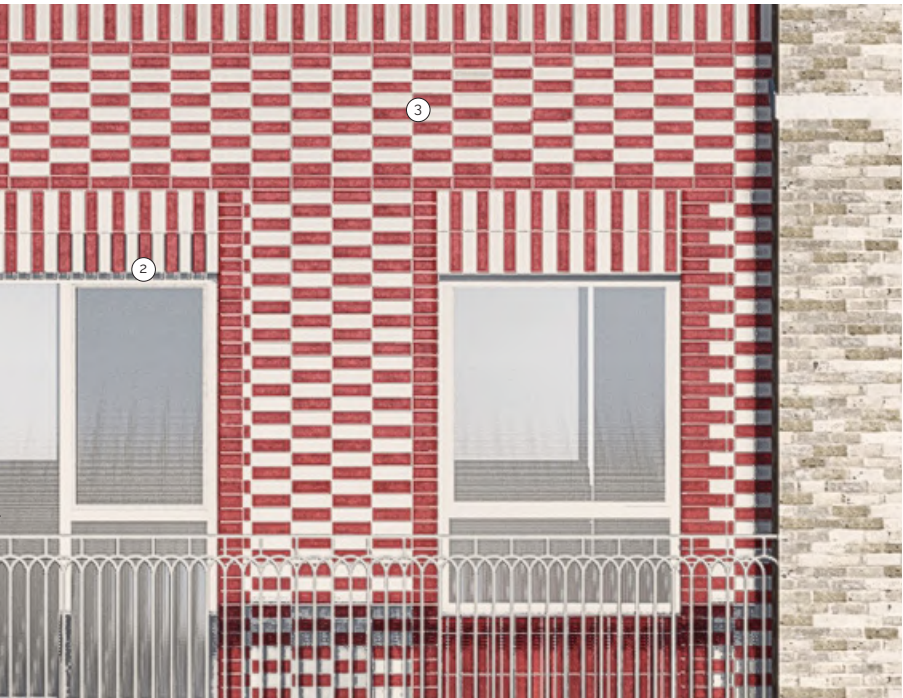
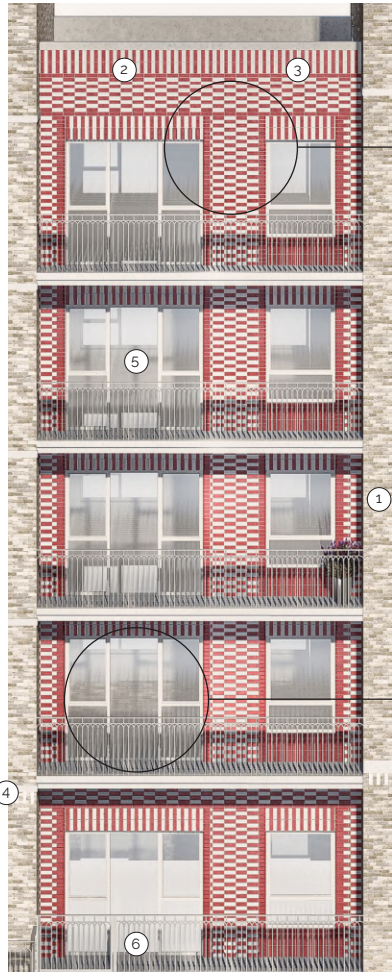
A

PSA  
originated by

HTA Design LLP  
www.hta.co.uk  
London | Edinburgh | Manchester | Bristol



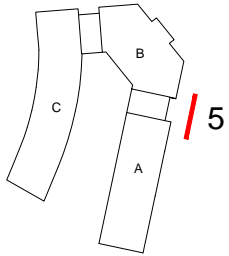




Red and white stackbond brick detail



Balcony railing with feature arched profile.



Rev	Date	Drawn	Description
A	23.07.20	PSA	Planning Issue
	08.09.20	PSA	Planning Issue

Notes:  
Do not scale from drawings unless by agreement with HTA. Use figured dimensions only. Check all dimensions on site prior to commencing the works. Drawing to be read in conjunction with other relevant consultant information.

This drawing is the copyright of HTA Design LLP and must not be copied or reproduced in part, or in whole, without the express permission of HTA Design LLP. Drawing to be read in conjunction with specification.

- Materials Key:
- 1 Brick type 1 - Stretcher bond (Buff brick)
  - 2 Brick type 2 - (Glazed red brick)
  - 3 Brick type 4 - (Glazed white brick)
  - 4 Stone Banding - (Precast concrete with stone aggregate, with 30mm projection)
  - 5 Window type 1 - (Aluminium window PVC coated frame with minimum 150mm reveal depth)
  - 6 Balcony Railings with feature Arched profile - (Architectural metal works, white)

Proposed Detail Elevation 5

drawing title  
Vistry Partnerships  
Belmont Street Site, Camden  
client / project

CHA-HTA-A-0234

drawing number revision

Not to Scale  
Scale @ A1

GAL-CHA  
project number

PSA  
originated by

PLANNING  
status

HTA Design LLP  
www.hta.co.uk  
London | Edinburgh | Manchester | Bristol

