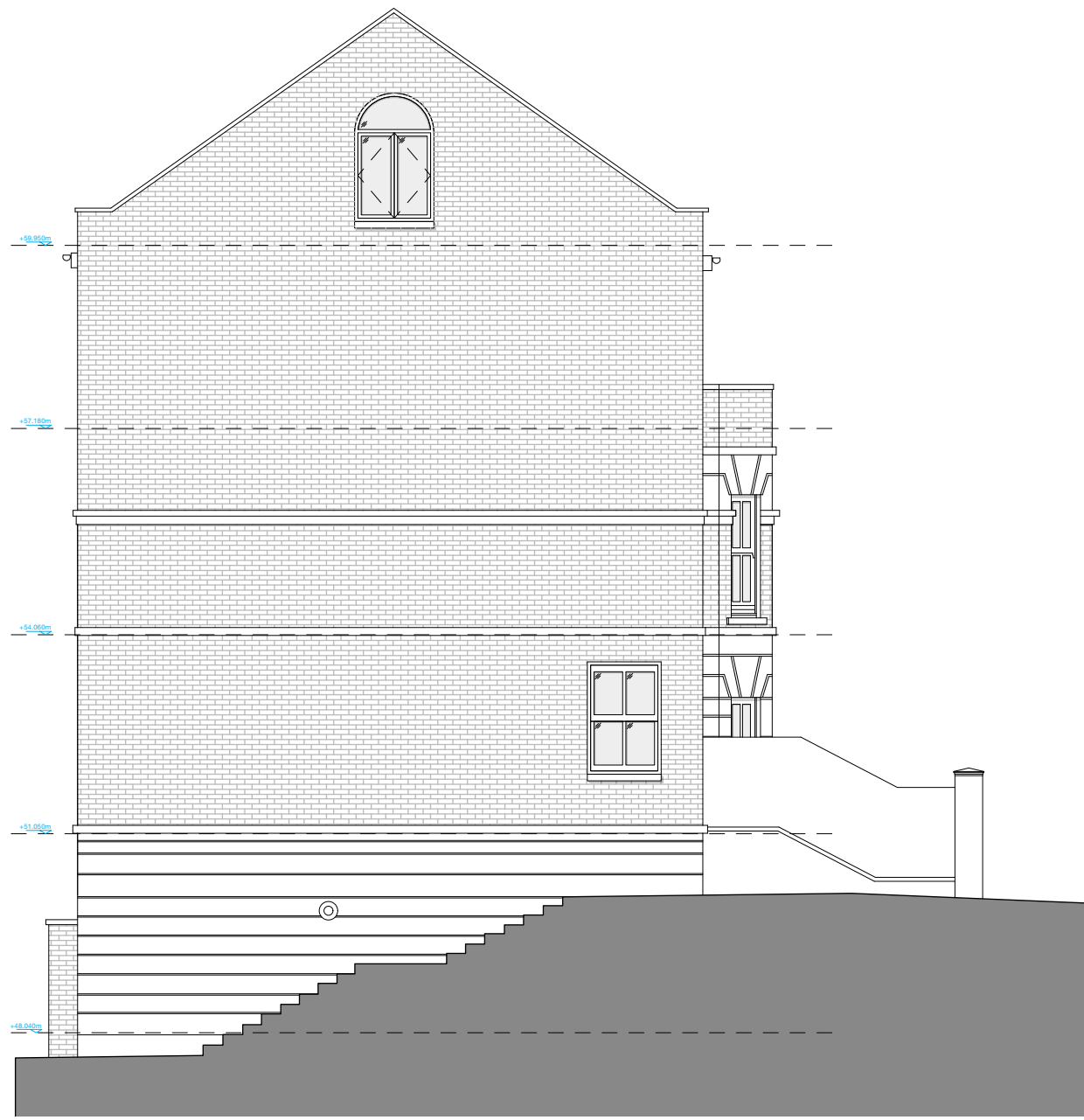


© This drawing is the property of Miltiadou Cook Mitzman architects. No disclosure or copy of it may be made without the written permission of Miltiadou Cook Mitzman architects.

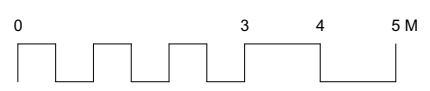
- For construction purposes:**
- Do not scale this drawing.
 - All dimensions and levels to be checked on site.
 - Discrepancies to be reported to Miltiadou Cook Mitzman architects before proceeding.
 - If in any doubt about information on this drawing contact Miltiadou Cook Mitzman architects.

REVISION NUMBER	DATE	BY	NOTES
P2	18/03/2022	RH	Revised information for Planning.



NOTES:

- KEY:**
- EXISTING STRUCTURE
 - PROPOSED WORKS



MILTIADOU COOK MITZMAN architects llp
 020 7722 8525 Unit 1 Primrose Mews
 office@mcma.design Sharpleshall Street
 www.mcma.design London NW1 8YW

CLIENT
 Mike Peskin

PROJECT
 3b Torriano Avenue, London NW5
 2SN

SHEET TITLE
 Proposed Elevation 3 (Side)

SCALE
 1:100

DATE CREATED **FILE REFERENCE**
 OCT 21

DRAWING NUMBER	REVISION
361-DWG-122	P2

