

| ELECTRICAL KEY | |
|----------------|--|
| | 13a Twin Switched Socket Outlet (TSSO) |
| | 13a Single Switched Socket Outlet (SSSO) |
| | 5a Spur Socket Outlet |
| | 20a Fuse Spur Outlet |
| | Distribution Board |
| | Fused Spur |
| | Shower Socket |
| | Hand Dryer |
| | Lighting |
| | Switch |
| | Downlight |
| | Directional Spotlight |
| | Pendant |
| | Feature Pendant |
| | Wall Bracket |
| | Picture Light |
| | Table Lamp |
| | Floor Lamp |
| | General Light Fitting |
| | Floor mounted LED uplighter |
| | Fluorescent Tube |
| | Bulkhead Fitting |
| | External Lantern |
| | External Wall Bracket |
| | Flood Light |
| | Trough Light |
| | External Illuminated Bollard |
| | Communications |
| | Telephone Point |
| | Entry Phone |
| | Aerial (TV) |
| | Speaker |
| | Audio/ Visual Connection |
| | Data point |
| | Wifi Access Point |

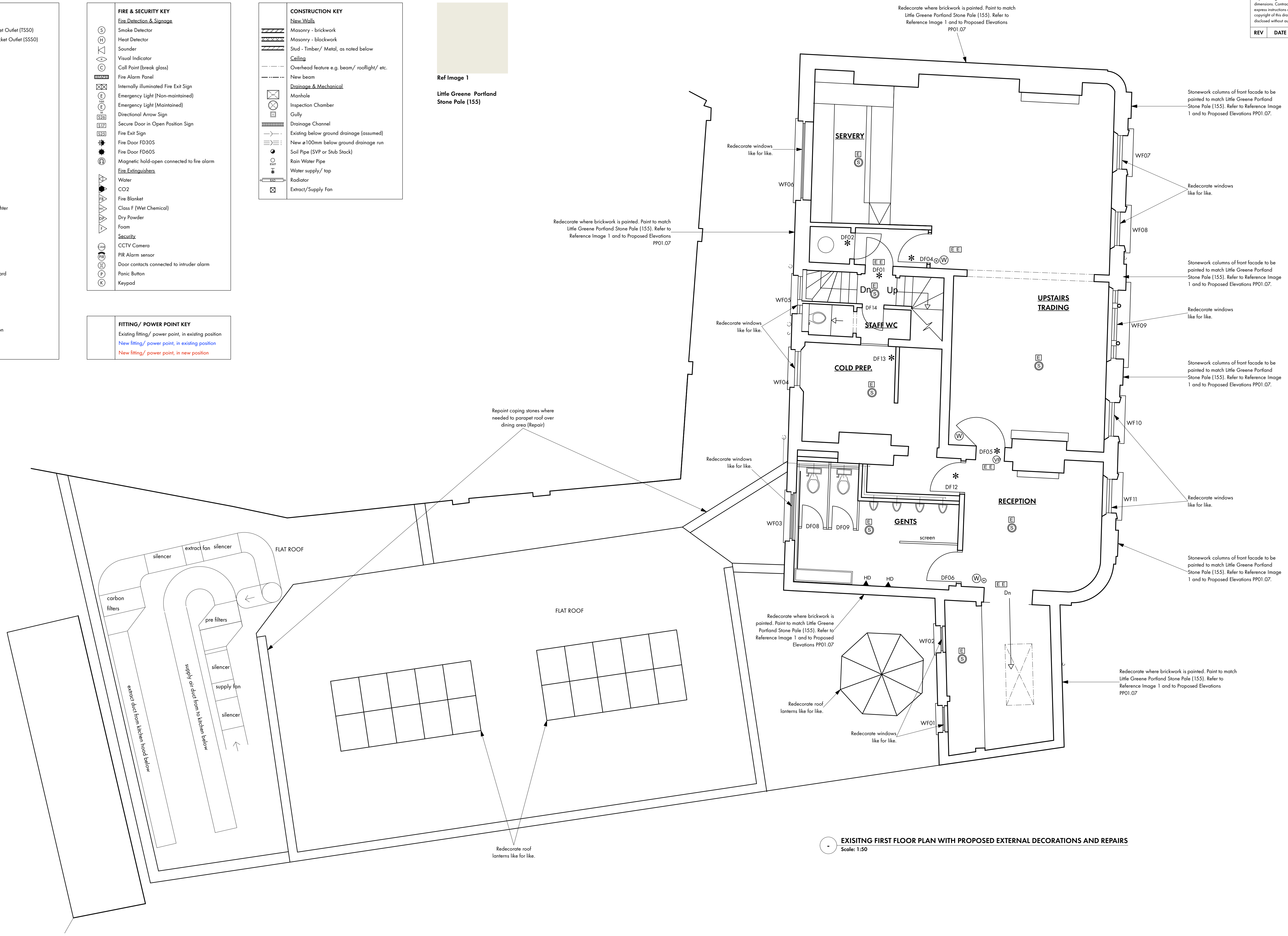
| FIRE & SECURITY KEY | |
|---------------------|--|
| | Fire Detection & Signage |
| | Smoke Detector |
| | Heat Detector |
| | Sounder |
| | Visual Indicator |
| | Call Point (break glass) |
| | Fire Alarm Panel |
| | Internally illuminated Fire Exit Sign |
| | Emergency Light (Non-maintained) |
| | Emergency Light (Maintained) |
| | Directional Arrow Sign |
| | Secure Door in Open Position Sign |
| | Fire Exit Sign |
| | Fire Door FD30S |
| | Fire Door FD60S |
| | Magnetic hold-open connected to fire alarm |
| | Fire Extinguishers |
| | Water |
| | CO2 |
| | Fire Blanket |
| | Class F (Wet Chemical) |
| | Dry Powder |
| | Foam |
| | Security |
| | CCTV Camera |
| | PIR Alarm sensor |
| | Door contacts connected to intruder alarm |
| | Panic Button |
| | Keypad |

| FITTING/ POWER POINT KEY | |
|--------------------------|---|
| | Existing fitting/ power point, in existing position |
| | New fitting/ power point, in existing position |
| | New fitting/ power point, in new position |

| CONSTRUCTION KEY | |
|------------------|---|
| | New Walls |
| | Masonry - brickwork |
| | Masonry - blockwork |
| | Stud - Timber/ Metal, as noted below |
| | Ceiling |
| | Overhead feature e.g. beam/ rooflight/ etc. |
| | New beam |
| | Drainage & Mechanical |
| | Manhole |
| | Inspection Chamber |
| | Gully |
| | Drainage Channel |
| | Existing below ground drainage (assumed) |
| | New 100mm below ground drainage run |
| | Soil Pipe (SVP or Stub Stack) |
| | Rain Water Pipe |
| | Water supply/ tap |
| | Radiator |
| | Extract/Supply Fan |



Ref Image 1
Little Greene Portland Stone Pale (155)



EXISTING FIRST FLOOR PLAN WITH PROPOSED EXTERNAL DECORATIONS AND REPAIRS
Scale: 1:50

| NOTES: | | |
|---|------|----------------|
| Contractors must verify all dimensions on site before commencing any work. Figure dimensions to take precedence over scaled dimensions. Contractors must not scale from this drawing unless express instructions are given by Sampson Associates. The copyright of this drawing is reserved. The drawing must not be disclosed without authority. | | |
| REV | DATE | AUTHOR/COMMENT |

SAMPSON ARCHITECTS
+
ASSOCIATES INTERIOR DESIGNERS

Unit CC413, Workspace Coceca Studios, Drummond Road, London SE16 4FA
+44(0)20 7394 8850 | sampsonassociates.co.uk | hello@sampsonassociates.co.uk

| | | | |
|--------|--|----------|----------------------------|
| Client | YOUNG'S & CO. | Drawn | JWH |
| Site | BULL AND GATE PH, KENTISH TOWN | Scale of | 1:50 |
| Title | EXISTING 1 st FLOOR WITH PROPOSED EXTERNAL DECS | Issued | MAR '22 |
| | | Level | PLANNING & LISTED BUILDING |