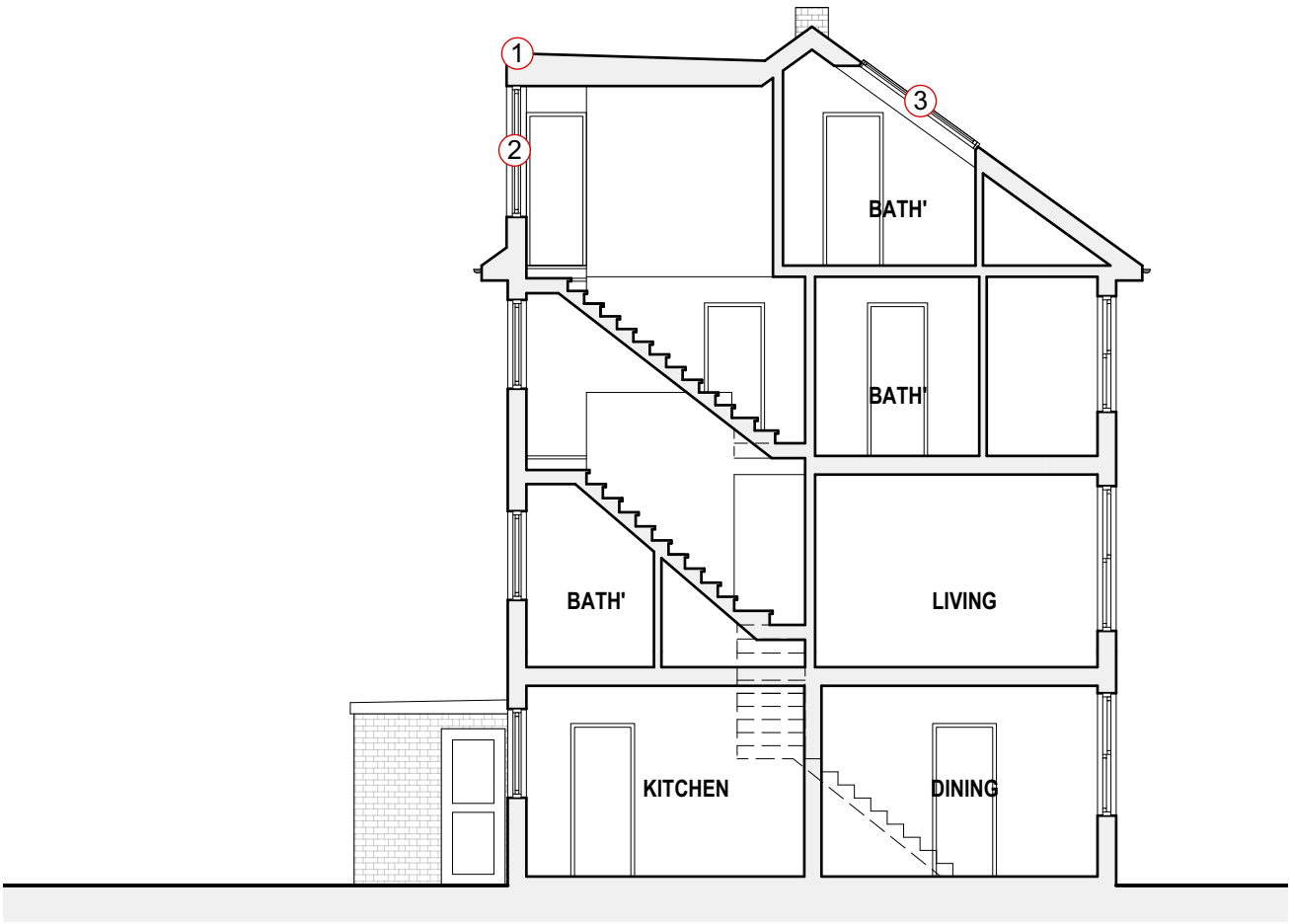


AGAMEMNON ROAD  
no. 31



Proposed Section A-A

1:100

Key

- ① New loft extension with tiles to match existing.
- ② Double glazed, metal framed windows.
- ③ Double glazed, velux window.
- ④ Solar panels protruding no more than 20cm from the external surface of the roof



<div>Rev: 00 28.02.2022. Issue for client comment</div> <div>01 07.03.2022. Issue for planning</div>			<div>Project: 31 Agamemnon Road NW6 1EJ</div> <div>Dwg no: 2129 / PL.06</div> <div>Drawing: Proposed Section Key</div>			<div>betterPAD</div> <div>love your home</div>		
<div>NOTES: All dimensions in millimeters. All dimensions to be checked on site. All omissions and discrepancies to be reported to the architect immediately. This drawing is © betterPAD.</div>			<div>Date: February 2022</div> <div>Scale: as shown</div> <div>C bP</div> <div>D bP</div> <div>Rev: 01</div>					
						<div>W www.betterpad.co.uk</div> <div>E hello@betterpad.co.uk</div>		

Planning